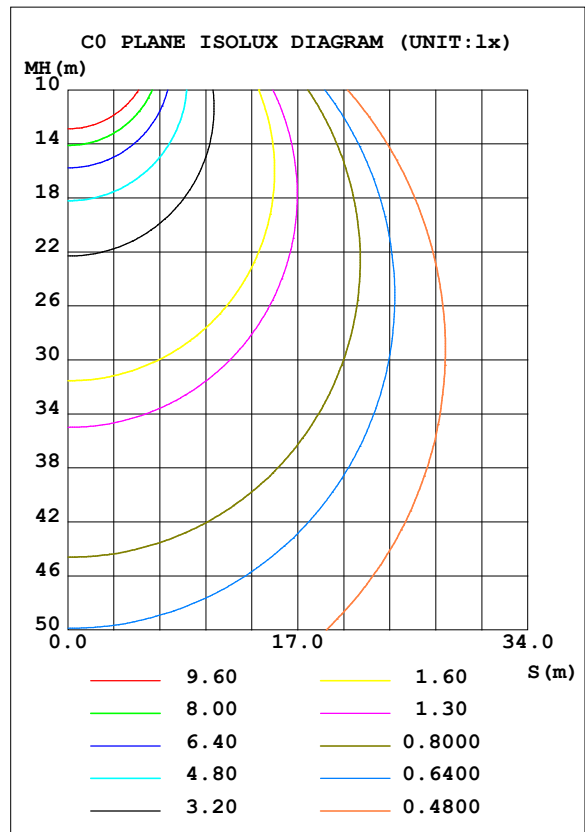
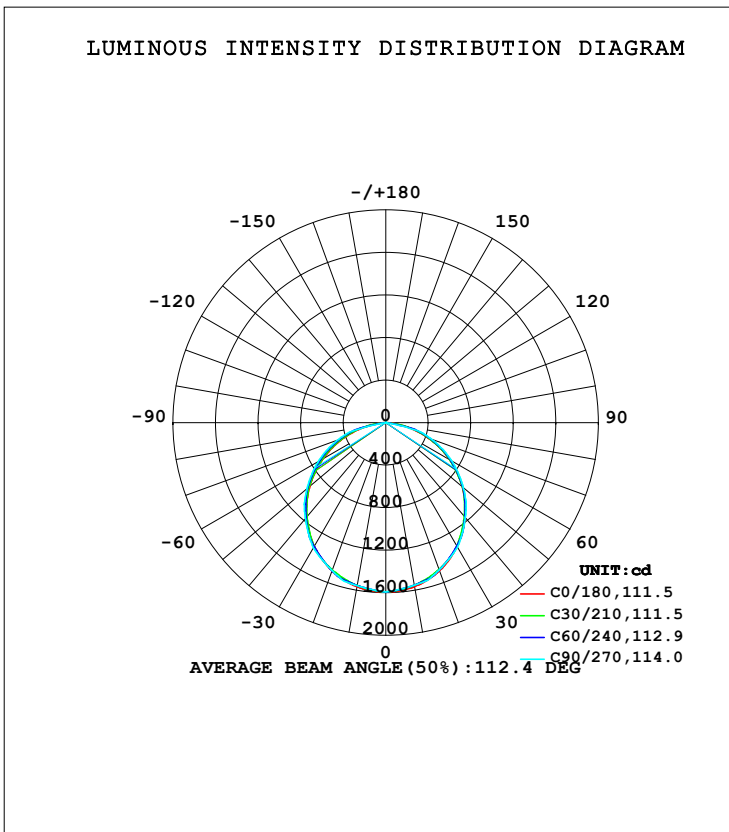


**LUMINAIRE PHOTOMETRIC TEST REPORT**

Test:U:220.27V I:0.1664A P:36.547W PF:0.9590 Freq:49.99Hz Lamp Flux:4475.54x1 lm		
NAME: GLM-DOR450D(4000K)	TYPE:LED	WEIGHT:
SPEC.:	DIM.:	SERIAL No.:1
MFR.: EVERFINE	SUR.:	Shielding Angle:

DATA OF LAMP		PHOTOMETRIC DATA Eff: 122.46 lm/W			
MODEL		I <sub>max</sub> (cd)	1592	S/MH (C0/180)	1.25
NOMINAL POWER (W)		LOR (%)	100.0	S/MH (C90/270)	1.27
RATED VOLTAGE (V)	220.0	TOTAL FLUX (lm)	4475.5	η UP, DN (C0-180)	0.0, 49.8
NOMINAL FLUX (lm)	4475.54	CIE CLASS	DIRECT	η UP, DN (C180-360)	0.0, 50.2
LAMPS INSIDE	1	η up (%)	0.0	CIBSE SHR NOM	1.25
TEST VOLTAGE (V)	220	η down (%)	100.0	CIBSE SHR MAX	1.35



H(β) Range: -90 - 90DEG  
 H(β) Interval: 1.0DEG  
 Test Speed: HIGH  
 Temperature: 25.3DEG  
 Operators:  
 Test Date: 06 December 2023

V(B) Range: -75 - 75DEG  
 V(B) Interval: 5.0DEG  
 Test System: EVERFINE GO-2000A\_V1 SYSTEM V2.0.366  
 Humidity: 65.0%  
 Test Distance: 7.500m [K=1.0667]  
 Remarks:

**ZONAL FLUX DIAGRAM**

ZONAL FLUX DIAGRAM:

$\gamma$	C0	C45	C90	C135	C180	C225	C270	C315	$\gamma$	$\Phi$ zone	$\Phi$ total	%lum, lamp
10	1566	1550	1553	1551	1566	1553	1557	1552	0- 10	149.8	149.8	3.35,3.35
20	1481	1478	1473	1482	1483	1486	1480	1483	10- 20	430.0	579.8	13,13
30	1344	1332	1353	1334	1344	1339	1362	1338	20- 30	651.5	1231	27.5,27.5
40	1160	1162	1165	1163	1158	1168	1177	1170	30- 40	785.9	2017	45.1,45.1
50	940.2	937.0	952.6	938.1	933.5	943.9	968.1	943.8	40- 50	815.1	2832	63.3,63.3
60	691.7	695.1	715.2	694.7	682.4	702.5	735.1	700.0	50- 60	737.0	3569	79.8,79.8
70	425.3	440.4	459.8	437.9	413.9	447.3	482.1	444.5	60- 70	566.7	4136	92.4,92.4
80	160.1	158.0	0	156.8	144.4	164.0	0	162.6	70- 80	313.5	4449	99.4,99.4
90	0	0	0	0	0	0	0	0	80- 90	26.10	4476	100,100
100									90-100			
110									100-110			
120									110-120			
130									120-130			
140									130-140			
150									140-150			
160									150-160			
170									160-170			
180									170-180			
DEG	LUMINOUS INTENSITY:cd									UNIT:lm		

Conical surface Flux(90deg): 2427.7 lm

%lum = 54.2%

%lamp = 54.2%

Conical surface Flux(120deg): 3569.3 lm

%lum = 79.8%

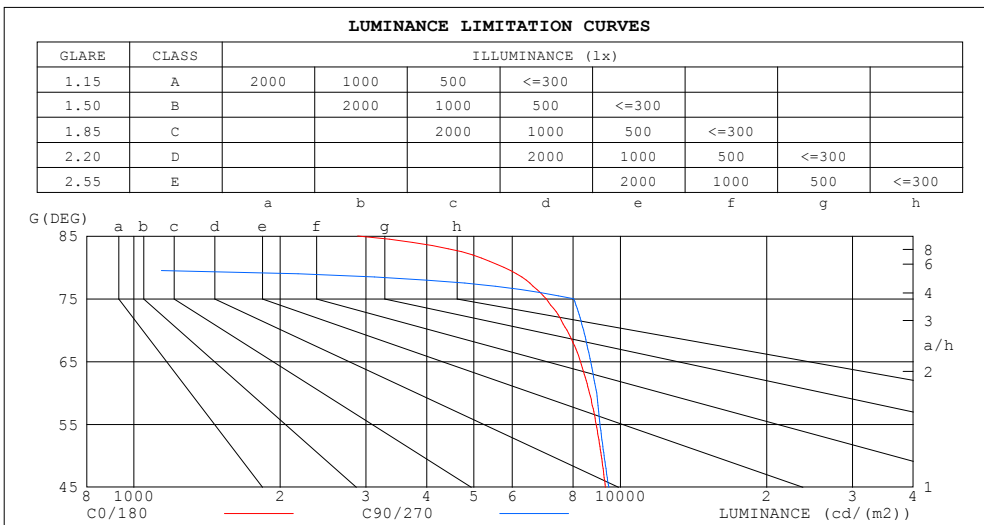
%lamp = 79.8%

H( $\beta$ ) Range:-90 - 90DEG  
H( $\beta$ ) Interval: 1.0DEG  
Test Speed: HIGH  
Temperature:25.3DEG  
Operators:  
Test Date:06 December 2023

V(B) Range:-75 - 75DEG  
V(B) Interval: 5.0DEG  
Test System:EVERFINE GO-2000A\_V1 SYSTEM V2.0.366  
Humidity:65.0%  
Test Distance:7.500m [K=1.0667]  
Remarks:

**LUMINANCE LIMITATION CURVES**

Test:U:220.27V I:0.1664A P:36.547W PF:0.9590 Freq:49.99Hz Lamp Flux:4475.54x1 lm		
NAME: GLM-DOR450D(4000K)	TYPE:LED	WEIGHT:
SPEC.:	DIM.:	SERIAL No.:1
MFR.: EVERFINE	SUR.:	Shielding Angle:



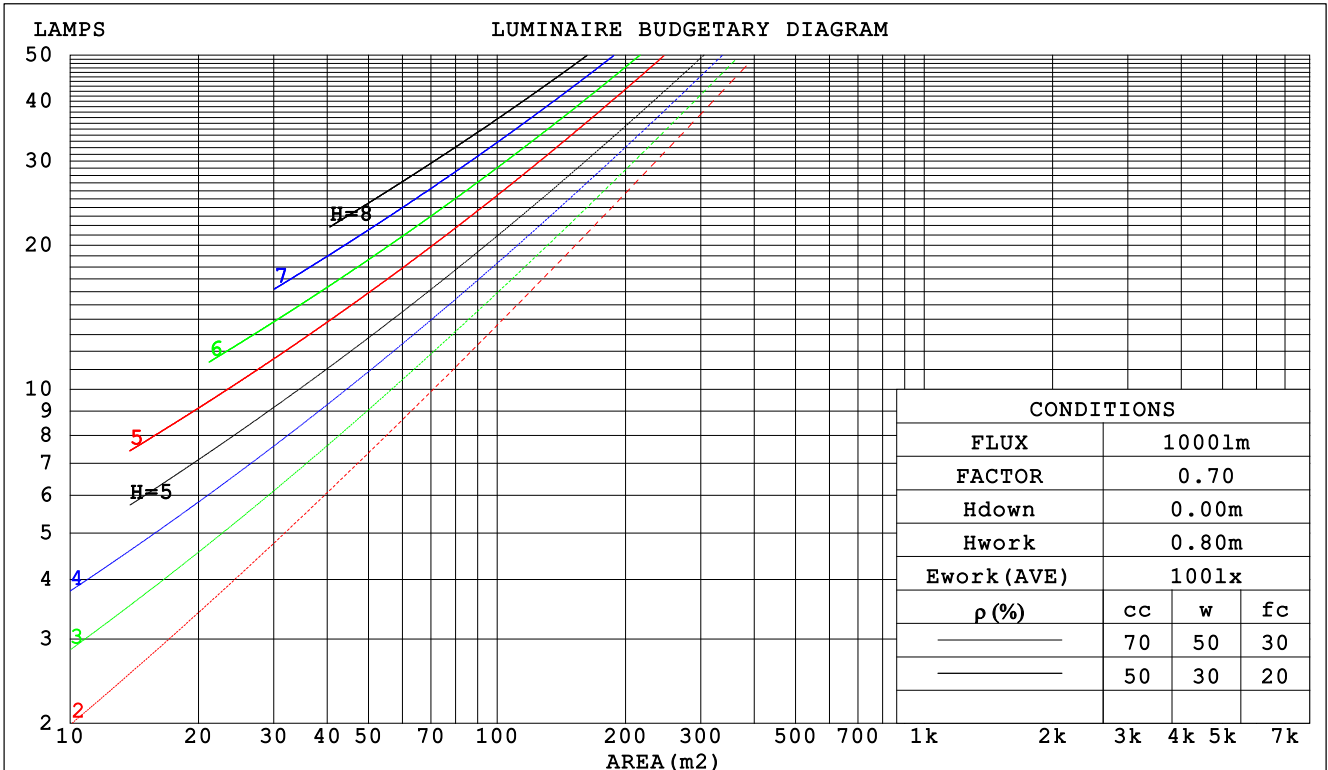
H( $\beta$ ) Range:-90 - 90DEG  
H( $\beta$ ) Interval: 1.0DEG  
Test Speed: HIGH  
Temperature:25.3DEG  
Operators:  
Test Date:06 December 2023

V(B) Range:-75 - 75DEG  
V(B) Interval: 5.0DEG  
Test System:EVERFINE GO-2000A\_V1 SYSTEM V2.0.366  
Humidity:65.0%  
Test Distance:7.500m [K=1.0667]  
Remarks:

CU AND LUMINAIRE BUDGETARY ESTIMATE DIAGRAM

Test:U:220.27V I:0.1664A P:36.547W PF:0.9590 Freq:49.99Hz Lamp Flux:4475.54x1 lm		
NAME: GLM-DOR450D(4000K)	TYPE:LED	WEIGHT:
SPEC.:	DIM.:	SERIAL No.:1
MFR.: EVERFINE	SUR.:	Shielding Angle:

$\rho_{cc}$	80%			70%			50%			30%			10%			0
$\rho_w$	50%	30%	10%	50%	30%	10%	50%	30%	10%	50%	30%	10%	50%	30%	10%	0
$\rho_{fc}$	20%			20%			20%			20%			20%			0
RCR	RCR:Room Cavity Ratio						Coefficients of Utilization(CU)									
0.0	1.19	1.19	1.19	1.16	1.16	1.16	1.11	1.11	1.11	1.06	1.06	1.06	1.02	1.02	1.02	1.00
1.0	1.05	1.00	.97	1.02	.99	.95	.98	.95	.92	.94	.92	.89	.91	.89	.87	.85
2.0	.91	.84	.79	.89	.83	.78	.86	.80	.76	.82	.78	.74	.79	.76	.73	.70
3.0	.80	.72	.65	.78	.71	.65	.75	.69	.64	.73	.67	.62	.70	.65	.61	.59
4.0	.71	.62	.55	.69	.61	.55	.67	.60	.54	.65	.58	.53	.62	.57	.53	.50
5.0	.63	.54	.47	.62	.54	.47	.60	.52	.47	.58	.51	.46	.56	.50	.46	.44
6.0	.57	.48	.41	.56	.47	.41	.54	.46	.41	.52	.46	.40	.51	.45	.40	.38
7.0	.51	.43	.37	.51	.42	.36	.49	.42	.36	.48	.41	.36	.46	.40	.36	.34
8.0	.47	.38	.33	.46	.38	.32	.45	.38	.32	.44	.37	.32	.42	.36	.32	.30
9.0	.43	.35	.29	.42	.35	.29	.41	.34	.29	.40	.34	.29	.39	.33	.29	.27
10.0	.40	.32	.27	.39	.32	.26	.38	.31	.26	.37	.31	.26	.36	.30	.26	.24



H( $\beta$ ) Range:-90 - 90DEG  
H( $\beta$ ) Interval: 1.0DEG  
Test Speed: HIGH  
Temperature:25.3DEG  
Operators:  
Test Date:06 December 2023

V(B) Range:-75 - 75DEG  
V(B) Interval: 5.0DEG  
Test System:EVERFINE GO-2000A\_V1 SYSTEM V2.0.366  
Humidity:65.0%  
Test Distance:7.500m [K=1.0667]  
Remarks:

WEC AND CCEC

Test:U:220.27V I:0.1664A P:36.547W PF:0.9590 Freq:49.99Hz Lamp Flux:4475.54x1 lm		
NAME: GLM-DOR450D(4000K)	TYPE:LED	WEIGHT:
SPEC.:	DIM.:	SERIAL No.:1
MFR.: EVERFINE	SUR.:	Shielding Angle:

ρcc	80%			70%			50%			30%			10%			0
ρw	50%	30%	10%	50%	30%	10%	50%	30%	10%	50%	30%	10%	50%	30%	10%	0
ρfc	20%			20%			20%			20%			20%			0
RCR	RCR:Room Cavity Ratio						Wall Exitance Coefficients (WEC)									
0.0																
1.0	.297	.169	.054	.290	.166	.053	.277	.159	.051	.265	.153	.049	.254	.147	.047	
2.0	.286	.157	.048	.280	.154	.047	.268	.149	.046	.257	.144	.045	.247	.140	.044	
3.0	.267	.142	.042	.261	.140	.042	.251	.136	.041	.241	.132	.041	.232	.129	.040	
4.0	.247	.128	.038	.242	.127	.037	.233	.124	.037	.225	.121	.036	.217	.118	.036	
5.0	.229	.117	.034	.225	.115	.034	.216	.113	.033	.209	.110	.033	.202	.108	.032	
6.0	.213	.107	.031	.209	.105	.030	.202	.103	.030	.195	.101	.030	.188	.099	.029	
7.0	.198	.098	.028	.195	.097	.028	.188	.095	.027	.182	.093	.027	.176	.092	.027	
8.0	.185	.090	.025	.182	.090	.025	.176	.088	.025	.171	.087	.025	.166	.085	.025	
9.0	.174	.084	.023	.171	.083	.023	.166	.082	.023	.161	.081	.023	.156	.079	.023	
10.0	.163	.078	.022	.161	.078	.022	.156	.076	.022	.152	.075	.021	.147	.074	.021	

ρcc	80%			70%			50%			30%			10%			0
ρw	50%	30%	10%	50%	30%	10%	50%	30%	10%	50%	30%	10%	50%	30%	10%	0
ρfc	20%			20%			20%			20%			20%			0
RCR	RCR:Room Cavity Ratio						Ceiling Cavity Exitance Coefficients (CCEC)									
0.0	.190	.190	.190	.163	.163	.163	.111	.111	.111	.064	.064	.064	.020	.020	.020	
1.0	.179	.156	.135	.154	.134	.116	.105	.092	.081	.060	.053	.047	.019	.017	.015	
2.0	.171	.132	.099	.147	.114	.085	.101	.079	.060	.058	.046	.035	.019	.015	.011	
3.0	.164	.114	.075	.140	.099	.065	.096	.068	.045	.056	.040	.027	.018	.013	.009	
4.0	.156	.101	.059	.134	.087	.051	.092	.061	.036	.053	.036	.021	.017	.012	.007	
5.0	.149	.091	.047	.128	.078	.041	.088	.055	.029	.051	.032	.017	.016	.010	.006	
6.0	.142	.082	.039	.122	.071	.034	.084	.050	.024	.049	.029	.014	.016	.010	.005	
7.0	.135	.075	.033	.116	.065	.029	.080	.046	.021	.047	.027	.012	.015	.009	.004	
8.0	.129	.069	.029	.111	.060	.025	.077	.042	.018	.045	.025	.011	.014	.008	.004	
9.0	.123	.065	.025	.106	.056	.022	.073	.039	.016	.043	.023	.009	.014	.008	.003	
10.0	.117	.060	.022	.101	.052	.020	.070	.037	.014	.041	.022	.008	.013	.007	.003	

H(β) Range:-90 - 90DEG  
H(β) Interval: 1.0DEG  
Test Speed: HIGH  
Temperature:25.3DEG  
Operators:  
Test Date:06 December 2023

V(B) Range:-75 - 75DEG  
V(B) Interval: 5.0DEG  
Test System:EVERFINE GO-2000A\_V1 SYSTEM V2.0.366  
Humidity:65.0%  
Test Distance:7.500m [K=1.0667]  
Remarks:

**UGR(Unified Glare Rating) Table**

Test:U:220.27V I:0.1664A P:36.547W PF:0.9590 Freq:49.99Hz Lamp Flux:4475.54x1 lm										
NAME: GLM-DOR450D(4000K)					TYPE:LED			WEIGHT:		
SPEC.:					DIM.:			SERIAL No.:1		
MFR.: EVERFINE					SUR.:			Shielding Angle:		
ceiling/cavity	0.7	0.7	0.5	0.5	0.3	0.7	0.7	0.5	0.5	0.3
walls	0.5	0.3	0.5	0.3	0.3	0.5	0.3	0.5	0.3	0.3
working plane	0.2	0.2	0.2	0.2	0.2	0.2	0.2	0.2	0.2	0.2
Room dimensions	Viewed crosswise					Viewed endwise				
x = 2H y = 2H	20.5	22.0	20.7	22.2	22.4	20.6	22.1	20.9	22.3	22.5
3H	22.0	23.4	22.3	23.6	23.8	22.2	23.6	22.5	23.9	24.1
4H	22.5	23.9	22.9	24.1	24.4	22.9	24.2	23.2	24.5	24.7
6H	22.9	24.2	23.2	24.4	24.7	23.0	24.2	23.3	24.5	24.8
8H	23.0	24.2	23.3	24.5	24.7	22.9	24.1	23.3	24.4	24.7
12H	22.9	24.1	23.3	24.4	24.7	22.9	24.0	23.2	24.3	24.6
4H 2H	21.1	22.4	21.4	22.7	22.9	21.2	22.6	21.5	22.8	23.1
3H	22.8	24.0	23.1	24.2	24.6	23.0	24.2	23.4	24.5	24.8
4H	23.5	24.5	23.9	24.9	25.2	23.8	24.9	24.2	25.2	25.5
6H	24.0	24.9	24.3	25.2	25.6	23.9	24.9	24.3	25.2	25.6
8H	24.0	24.9	24.5	25.3	25.7	23.9	24.8	24.3	25.1	25.5
12H	24.0	24.8	24.5	25.2	25.6	23.9	24.7	24.3	25.0	25.4
8H 4H	23.8	24.6	24.2	25.0	25.4	24.1	24.9	24.5	25.3	25.7
6H	24.4	25.1	24.8	25.5	25.9	24.2	25.0	24.7	25.4	25.8
8H	24.5	25.2	25.0	25.6	26.0	24.2	24.8	24.7	25.3	25.7
12H	24.6	25.1	25.0	25.6	26.0	24.2	24.7	24.6	25.2	25.6
12H 4H	23.8	24.6	24.2	24.9	25.3	24.1	24.9	24.5	25.3	25.7
6H	24.4	25.0	24.8	25.4	25.9	24.3	24.9	24.7	25.3	25.8
8H	24.5	25.1	25.0	25.5	26.0	24.2	24.8	24.7	25.2	25.7
Variations with the observer position at spacings:										
S = 1.0H	+ 0.2 / - 0.2					+ 0.2 / - 0.2				
1.5H	+ 0.2 / - 0.3					+ 0.1 / - 0.2				
2.0H	+ 0.2 / - 0.2					+ 0.2 / - 0.4				

CIE Pub.117, 4476 lm Total Lamp Luminous Flux Corrected (8log(F/F0) = 5.2)

H(β) Range:-90 - 90DEG	V(B) Range:-75 - 75DEG
H(β) Interval: 1.0DEG	V(B) Interval: 5.0DEG
Test Speed: HIGH	Test System:EVERFINE GO-2000A_V1 SYSTEM V2.0.366
Temperature:25.3DEG	Humidity:65.0%
Operators:	Test Distance:7.500m [K=1.0667]
Test Date:06 December 2023	Remarks:

**UTILIZATION FACTORS TABLE**

Test:U:220.27V I:0.1664A P:36.547W PF:0.9590 Freq:49.99Hz Lamp Flux:4475.54x1 lm		
NAME: GLM-DOR450D(4000K)	TYPE:LED	WEIGHT:
SPEC.:	DIM.:	SERIAL No.:1
MFR.: EVERFINE	SUR.:	Shielding Angle:

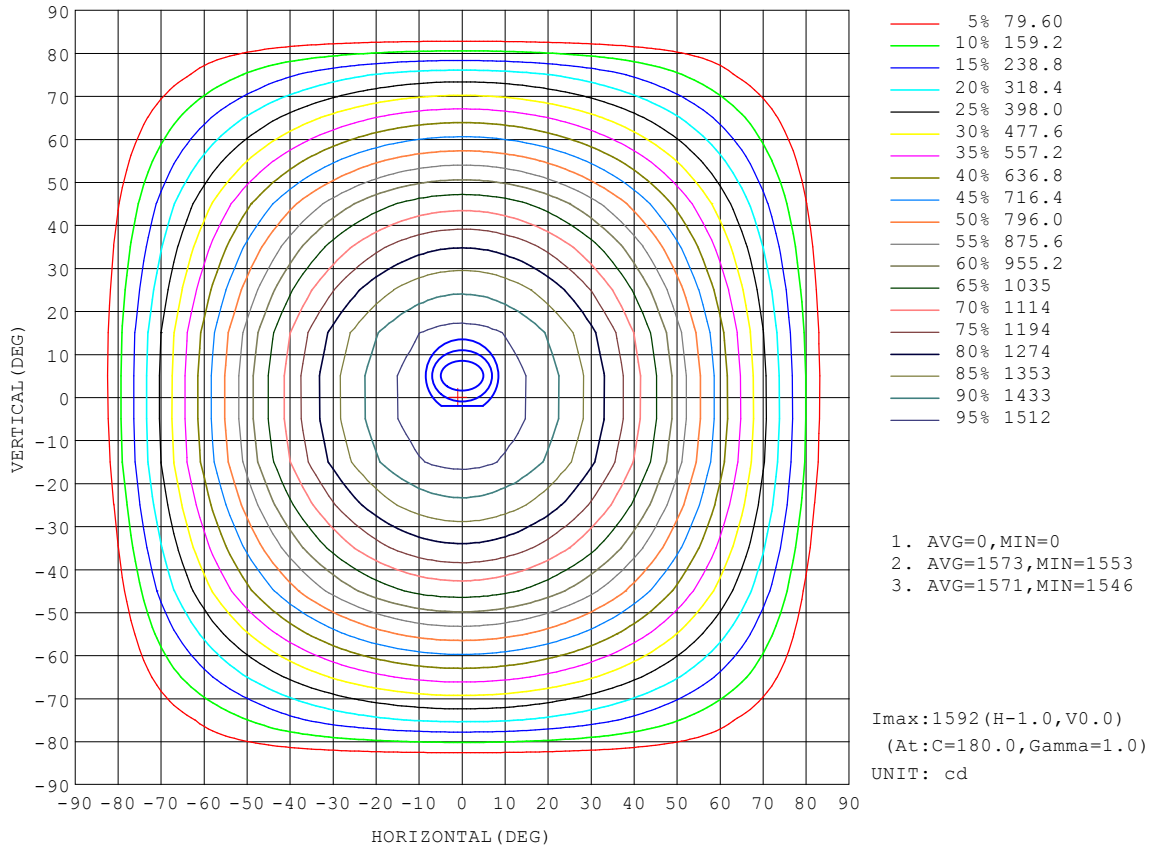
REFLECTANCE										
Ceiling	0.8	0.8	0.8	0.7	0.7	0.7	0.5	0.5	0.5	0
Walls	0.7	0.5	0.3	0.7	0.5	0.3	0.7	0.5	0.3	0
Working plane	0.2	0.2	0.2	0.2	0.2	0.2	0.2	0.2	0.2	0
ROOM INDEX	UTILIZATION FACTORS (PERCENT) k(RI) x RCR = 5									
k = 0.60	58	46	39	57	46	39	56	45	39	33
0.80	68	56	49	67	56	49	65	55	48	42
1.00	76	65	58	75	65	58	73	66	57	50
1.25	84	73	66	82	72	66	79	71	65	58
1.50	89	79	72	87	78	71	84	76	70	63
2.00	95	87	81	94	86	80	90	84	78	71
2.50	99	92	86	97	90	85	94	88	83	75
3.00	103	96	91	101	95	90	97	92	87	79
4.00	107	101	97	104	100	95	100	96	93	84
5.00	109	105	101	107	103	99	102	99	96	87
ROOM INDEX	UF(total)									Direct
According to DIN EN 13032-2 2004			Suspended				SHRNOM = 1.25			

H( $\beta$ ) Range:-90 - 90DEG  
H( $\beta$ ) Interval: 1.0DEG  
Test Speed: HIGH  
Temperature:25.3DEG  
Operators:  
Test Date:06 December 2023

V(B) Range:-75 - 75DEG  
V(B) Interval: 5.0DEG  
Test System:EVERFINE GO-2000A\_V1 SYSTEM V2.0.366  
Humidity:65.0%  
Test Distance:7.500m [K=1.0667]  
Remarks:

**ISOCANDELA DIAGRAM**

Test:U:220.27V I:0.1664A P:36.547W PF:0.9590 Freq:49.99Hz Lamp Flux:4475.54x1 lm		
NAME: GLM-DOR450D(4000K)	TYPE:LED	WEIGHT:
SPEC.:	DIM.:	SERIAL No.:1
MFR.: EVERFINE	SUR.:	Shielding Angle:



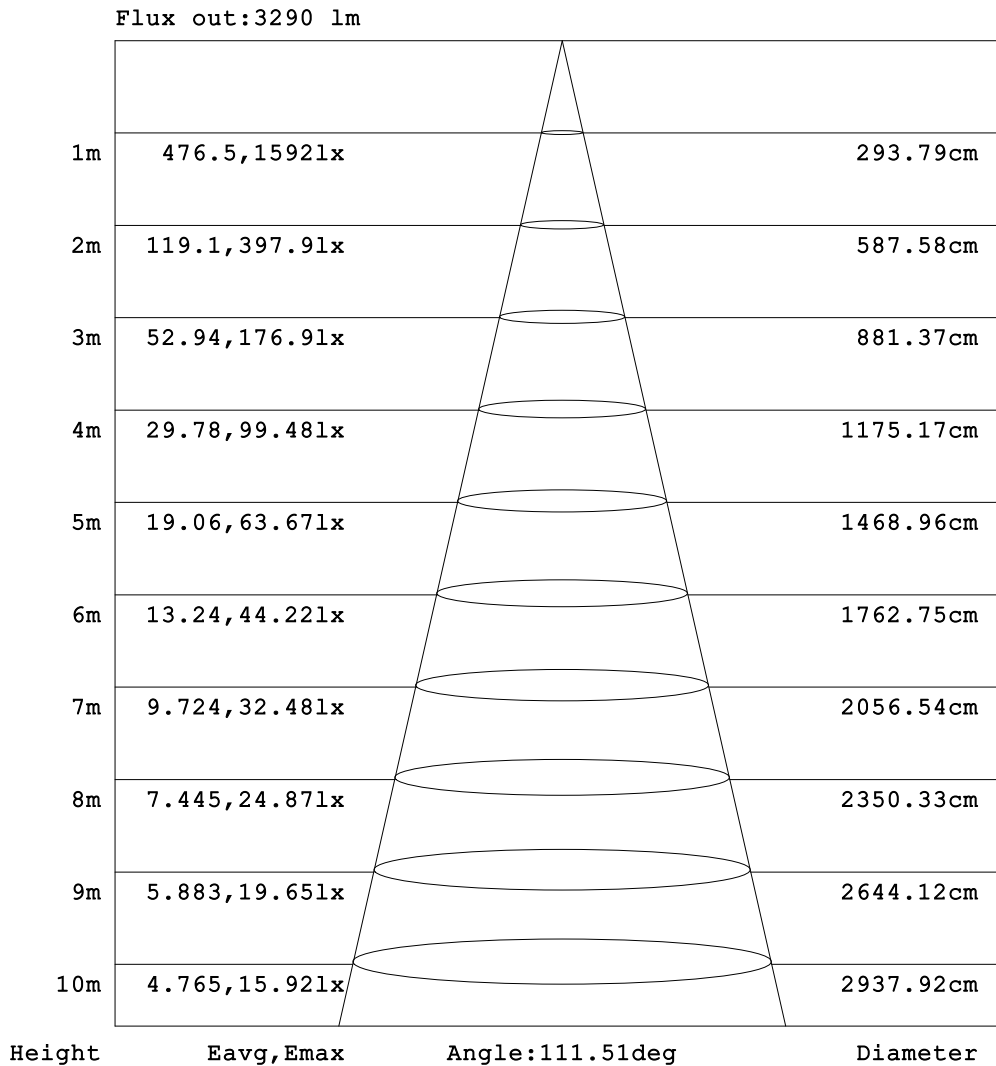
H( $\beta$ ) Range:-90 - 90DEG  
 H( $\beta$ ) Interval: 1.0DEG  
 Test Speed: HIGH  
 Temperature:25.3DEG  
 Operators:  
 Test Date:06 December 2023

V(B) Range:-75 - 75DEG  
 V(B) Interval: 5.0DEG  
 Test System:EVERFINE GO-2000A\_V1 SYSTEM V2.0.366  
 Humidity:65.0%  
 Test Distance:7.500m [K=1.0667]  
 Remarks:



**AAI Figure**

Test:U:220.27V I:0.1664A P:36.547W PF:0.9590 Freq:49.99Hz Lamp Flux:4475.54x1 lm		
NAME: GLM-DOR450D(4000K)	TYPE:LED	WEIGHT:
SPEC.:	DIM.:	SERIAL No.:1
MFR.: EVERFINE	SUR.:	Shielding Angle:



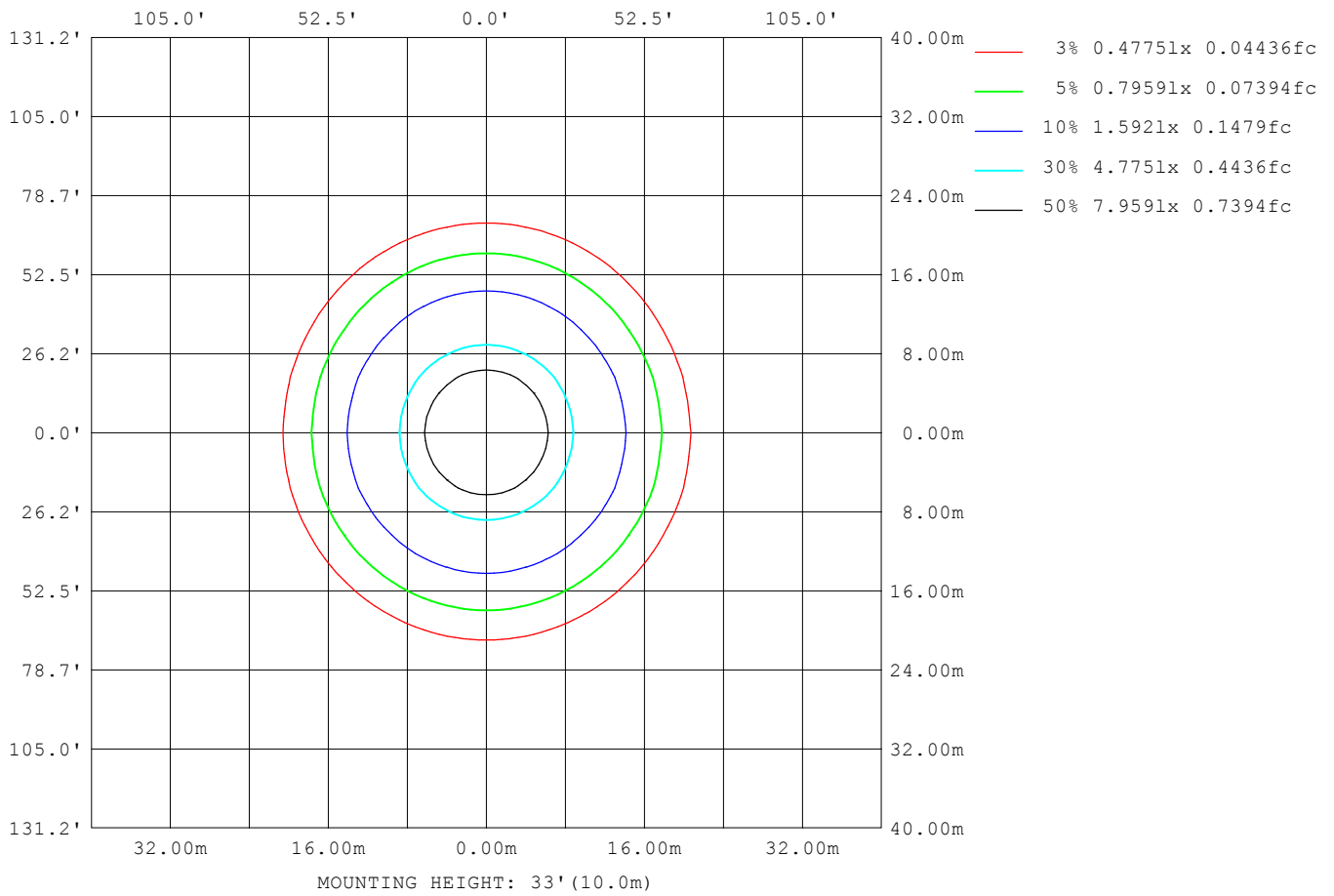
Note:The Curves indicate the illuminated area and the average illumination when the luminaire is at different distance.

H( $\beta$ ) Range:-90 - 90DEG  
H( $\beta$ ) Interval: 1.0DEG  
Test Speed: HIGH  
Temperature:25.3DEG  
Operators:  
Test Date:06 December 2023

V(B) Range:-75 - 75DEG  
V(B) Interval: 5.0DEG  
Test System:EVERFINE GO-2000A\_V1 SYSTEM V2.0.366  
Humidity:65.0%  
Test Distance:7.500m [K=1.0667]  
Remarks:

**ISOLUX DIAGRAM**

Test:U:220.27V I:0.1664A P:36.547W PF:0.9590 Freq:49.99Hz Lamp Flux:4475.54x1 lm		
NAME: GLM-DOR450D(4000K)	TYPE:LED	WEIGHT:
SPEC.:	DIM.:	SERIAL No.:1
MFR.: EVERFINE	SUR.:	Shielding Angle:



H( $\beta$ ) Range:-90 - 90DEG  
 H( $\beta$ ) Interval: 1.0DEG  
 Test Speed: HIGH  
 Temperature:25.3DEG  
 Operators:  
 Test Date:06 December 2023

V(B) Range:-75 - 75DEG  
 V(B) Interval: 5.0DEG  
 Test System:EVERFINE GO-2000A\_V1 SYSTEM V2.0.366  
 Humidity:65.0%  
 Test Distance:7.500m [K=1.0667]  
 Remarks:

**LED Avg.L Report**

Test:U:220.27V I:0.1664A P:36.547W PF:0.9590 Freq:49.99Hz Lamp Flux:4475.54x1 lm		
NAME: GLM-DOR450D(4000K)	TYPE:LED	WEIGHT:
SPEC.:	DIM.:	SERIAL No.:1
MFR.: EVERFINE	SUR.:	Shielding Angle:

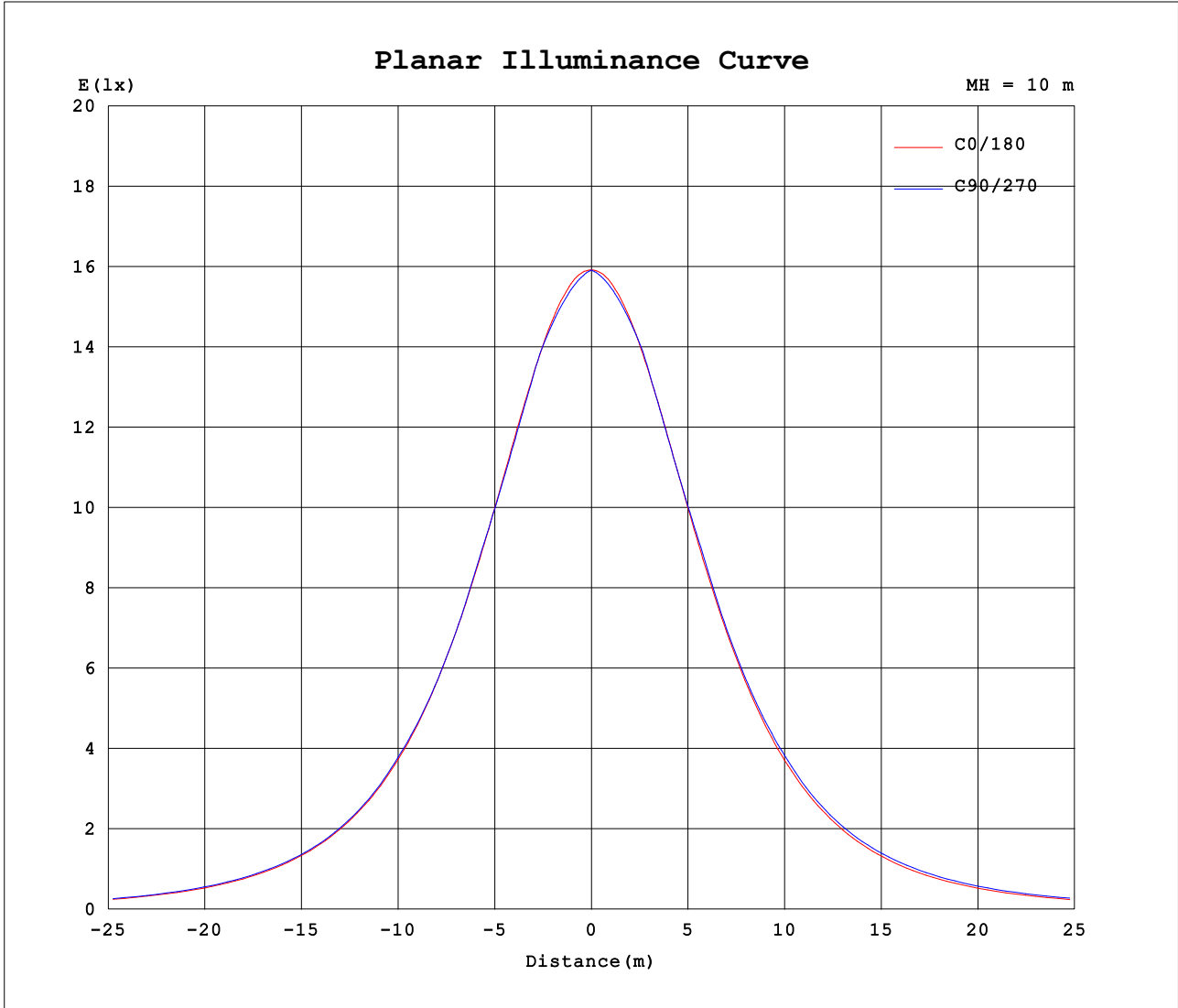
AvgL	cd/m2
L_0~180 (65) av	8201
L_0~180 (75) av	6879
L_0~180 (85) av	1926
L_90~270 (65) av	8845
L_90~270 (75) av	8304
L_90~270 (85) av	0
L_45 (65) av	8446
L_45 (75) av	7510
L_45 (85) av	0

Standard: GB/T 29293-2012

H( $\beta$ ) Range:-90 - 90DEG  
H( $\beta$ ) Interval: 1.0DEG  
Test Speed: HIGH  
Temperature:25.3DEG  
Operators:  
Test Date:06 December 2023

V(B) Range:-75 - 75DEG  
V(B) Interval: 5.0DEG  
Test System:EVERFINE GO-2000A\_V1 SYSTEM V2.0.366  
Humidity:65.0%  
Test Distance:7.500m [K=1.0667]  
Remarks:

**Planar Illuminance Curve**



H( $\beta$ ) Range:-90 - 90DEG  
H( $\beta$ ) Interval: 1.0DEG  
Test Speed: HIGH  
Temperature:25.3DEG  
Operators:  
Test Date:06 December 2023

V(B) Range:-75 - 75DEG  
V(B) Interval: 5.0DEG  
Test System:EVERFINE GO-2000A\_V1 SYSTEM V2.0.366  
Humidity:65.0%  
Test Distance:7.500m [K=1.0667]  
Remarks:

LUMINOUS DISTRIBUTION INTENSITY DATA

Test:U:220.27V I:0.1664A P:36.547W PF:0.9590 Freq:49.99Hz Lamp Flux:4475.54x1 lm		
NAME: GLM-DOR450D(4000K)	TYPE:LED	WEIGHT:
SPEC.:	DIM.:	SERIAL No.:1
MFR.: EVERFINE	SUR.:	Shielding Angle:

Table--1

UNIT: cd

C (DEG) γ (DEG)	0	5	10	15	20	25	30	35	40	45	50	55	60	65	70	75	80	85	90
0	1592	1592	1592	1592	1592	1592	1592	1592	1592	1592	1592	1592	1592	1592	1592	1592	1592	1592	1592
5	1587	1585	1584	1582	1581	1579	1578	1577	1576	1575	1575	1574	1574	1573	1573	1573	1572	1572	1572
10	1566	1562	1559	1557	1555	1553	1551	1550	1550	1550	1550	1550	1551	1552	1552	1552	1552	1553	1553
15	1530	1525	1521	1518	1516	1515	1516	1516	1516	1517	1519	1521	1524	1526	1528	1531	1531	1533	1533
20	1481	1475	1470	1467	1466	1466	1467	1470	1474	1478	1480	1476	1474	1473	1473	1473	1472	1473	1473
25	1419	1411	1406	1404	1404	1406	1411	1418	1413	1409	1408	1407	1409	1408	1409	1410	1412	1412	1413
30	1344	1335	1330	1329	1331	1337	1338	1335	1332	1332	1334	1335	1338	1343	1345	1348	1350	1351	1353
35	1258	1248	1244	1245	1250	1251	1246	1245	1246	1251	1255	1262	1260	1258	1257	1258	1258	1258	1259
40	1160	1150	1147	1151	1155	1149	1149	1152	1158	1162	1159	1157	1158	1158	1160	1161	1162	1163	1165
45	1055	1044	1044	1051	1045	1043	1047	1056	1052	1050	1050	1052	1054	1058	1062	1065	1067	1069	1071
50	940	930	932	934	930	935	941	936	935	937	941	946	948	948	949	949	950	951	953
55	818	809	815	811	814	820	815	815	819	825	823	823	824	826	827	829	831	833	834
60	692	684	688	687	694	689	690	696	695	695	697	699	702	705	707	710	712	714	715
65	560	555	556	563	559	561	564	564	565	569	572	576	578	579	582	584	585	587	588
70	425	423	425	427	429	429	431	435	439	440	442	446	448	451	454	456	458	459	460
75	292	289	293	294	294	297	301	303	305	308	312	317	320	323	326	329	331	332	332
80	160	157	154	157	163	165	167	171	175	158	133	107	81.3	58.1	38.1	21.8	9.82	2.47	0.00
85	40.2	20.8	29.6	32.3	35.4	24.2	0.00	0.00	0.00	0.00	0.00	0.00	0.00	0.00	0.00	0.00	0.00	0.00	0.00
90	0.00	0.00	0.00	0.00	0.00	0.00	0.00	0.00	0.00	0.00	0.00	0.00	0.00	0.00	0.00	0.00	0.00	0.00	0.00

H(β) Range:-90 - 90DEG  
H(β) Interval: 1.0DEG  
Test Speed: HIGH  
Temperature:25.3DEG  
Operators:  
Test Date:06 December 2023

V(B) Range:-75 - 75DEG  
V(B) Interval: 5.0DEG  
Test System:EVERFINE GO-2000A\_V1 SYSTEM V2.0.366  
Humidity:65.0%  
Test Distance:7.500m [K=1.0667]  
Remarks:

LUMINOUS DISTRIBUTION INTENSITY DATA

Test:U:220.27V I:0.1664A P:36.547W PF:0.9590 Freq:49.99Hz Lamp Flux:4475.54x1 lm		
NAME: GLM-DOR450D(4000K)	TYPE:LED	WEIGHT:
SPEC.:	DIM.:	SERIAL No.:1
MFR.: EVERFINE	SUR.:	Shielding Angle:

Table--2

UNIT: cd

C (DEG) γ (DEG)	95	100	105	110	115	120	125	130	135	140	145	150	155	160	165	170	175	180	185
0	1592	1592	1592	1592	1592	1592	1592	1592	1592	1592	1592	1592	1592	1592	1592	1592	1592	1592	1592
5	1572	1572	1573	1573	1573	1574	1574	1575	1575	1576	1577	1578	1579	1581	1582	1584	1585	1587	1586
10	1552	1553	1553	1552	1552	1552	1551	1551	1551	1552	1552	1553	1554	1555	1557	1560	1563	1566	1563
15	1533	1533	1531	1529	1528	1526	1524	1522	1520	1518	1517	1517	1517	1518	1520	1523	1527	1532	1527
20	1473	1473	1473	1475	1475	1478	1479	1482	1482	1477	1474	1470	1468	1468	1469	1472	1476	1483	1477
25	1413	1412	1412	1411	1411	1409	1410	1411	1413	1416	1421	1414	1410	1406	1406	1408	1412	1419	1412
30	1352	1350	1348	1346	1343	1340	1338	1335	1334	1335	1338	1342	1342	1335	1331	1331	1335	1344	1336
35	1258	1259	1259	1259	1260	1262	1263	1257	1252	1249	1248	1249	1255	1253	1246	1245	1248	1256	1248
40	1164	1164	1163	1162	1160	1159	1159	1160	1163	1159	1153	1150	1152	1158	1153	1147	1149	1158	1149
45	1070	1069	1067	1064	1060	1057	1054	1051	1051	1052	1055	1047	1044	1046	1051	1043	1042	1050	1042
50	952	952	951	951	950	951	948	943	938	935	934	939	933	929	934	930	926	934	926
55	834	833	831	829	827	825	825	825	826	819	814	812	815	809	808	813	805	812	804
60	715	713	710	707	705	702	699	696	695	695	696	688	684	687	680	684	677	682	677
65	587	586	584	581	579	577	574	571	567	563	561	561	557	552	552	549	547	549	547
70	459	458	456	454	451	448	444	441	438	435	430	426	424	423	416	414	416	414	415
75	332	331	329	326	324	321	317	312	307	301	297	294	290	286	286	279	278	278	279
80	2.47	9.81	21.8	38.1	58.2	81.6	107	133	157	170	165	161	157	153	143	133	132	144	146
85	0.00	0.00	0.00	0.00	0.00	0.00	0.00	0.00	0.00	0.00	0.00	0.00	21.7	26.8	21.3	18.1	6.42	13.5	24.4
90	0.00	0.00	0.00	0.00	0.00	0.00	0.00	0.00	0.00	0.00	0.00	0.00	0.00	0.00	0.00	0.00	0.00	0.00	0.00

H(β) Range:-90 - 90DEG  
H(β) Interval: 1.0DEG  
Test Speed: HIGH  
Temperature:25.3DEG  
Operators:  
Test Date:06 December 2023

V(B) Range:-75 - 75DEG  
V(B) Interval: 5.0DEG  
Test System:EVERFINE GO-2000A\_V1 SYSTEM V2.0.366  
Humidity:65.0%  
Test Distance:7.500m [K=1.0667]  
Remarks:

LUMINOUS DISTRIBUTION INTENSITY DATA

Test:U:220.27V I:0.1664A P:36.547W PF:0.9590 Freq:49.99Hz Lamp Flux:4475.54x1 lm		
NAME: GLM-DOR450D(4000K)	TYPE:LED	WEIGHT:
SPEC.:	DIM.:	SERIAL No.:1
MFR.: EVERFINE	SUR.:	Shielding Angle:

Table--3

UNIT: cd

C (DEG) γ (DEG)	190	195	200	205	210	215	220	225	230	235	240	245	250	255	260	265	270	275	280
0	1592	1592	1592	1592	1592	1592	1592	1592	1592	1592	1592	1592	1592	1592	1592	1592	1592	1592	1592
5	1584	1583	1581	1580	1579	1578	1577	1576	1576	1576	1575	1575	1574	1574	1574	1574	1574	1574	1574
10	1560	1558	1556	1555	1554	1554	1553	1553	1553	1554	1555	1555	1555	1556	1556	1556	1557	1556	1555
15	1524	1521	1519	1519	1519	1519	1521	1523	1525	1527	1529	1532	1535	1535	1537	1538	1539	1537	1536
20	1473	1471	1470	1470	1473	1475	1480	1486	1486	1483	1483	1481	1480	1480	1480	1480	1480	1479	1479
25	1408	1407	1408	1412	1417	1424	1420	1417	1415	1415	1415	1417	1418	1419	1420	1421	1421	1420	1420
30	1332	1333	1337	1344	1345	1341	1339	1339	1340	1343	1346	1350	1354	1358	1361	1362	1362	1362	1360
35	1246	1248	1256	1257	1252	1251	1253	1257	1262	1268	1267	1267	1268	1268	1270	1269	1270	1269	1270
40	1148	1154	1160	1154	1153	1156	1163	1168	1166	1166	1167	1169	1171	1173	1175	1176	1177	1176	1176
45	1042	1052	1047	1045	1050	1059	1056	1056	1058	1061	1065	1070	1074	1078	1082	1083	1085	1084	1082
50	929	933	929	933	941	938	940	944	949	956	960	961	963	964	966	967	968	968	967
55	812	807	809	816	814	817	824	832	833	834	838	841	844	847	849	851	852	851	850
60	683	679	686	685	690	700	700	702	706	711	716	721	726	730	733	735	735	735	733
65	547	551	552	557	563	565	570	576	582	589	593	597	601	604	606	608	609	608	606
70	412	415	421	425	428	435	442	447	452	458	463	468	473	477	480	481	482	481	479
75	279	285	287	292	298	302	308	315	322	328	335	340	345	350	353	355	356	354	352
80	150	153	157	161	166	172	178	164	138	112	85.5	61.5	40.4	23.3	10.5	2.65	0.00	2.64	10.5
85	31.7	29.0	34.3	24.0	0.00	0.00	0.00	0.00	0.00	0.00	0.00	0.00	0.00	0.00	0.00	0.00	0.00	0.00	0.00
90	0.00	0.00	0.00	0.00	0.00	0.00	0.00	0.00	0.00	0.00	0.00	0.00	0.00	0.00	0.00	0.00	0.00	0.00	0.00

H(β) Range:-90 - 90DEG  
H(β) Interval: 1.0DEG  
Test Speed: HIGH  
Temperature:25.3DEG  
Operators:  
Test Date:06 December 2023

V(B) Range:-75 - 75DEG  
V(B) Interval: 5.0DEG  
Test System:EVERFINE GO-2000A\_V1 SYSTEM V2.0.366  
Humidity:65.0%  
Test Distance:7.500m [K=1.0667]  
Remarks:

**LUMINOUS DISTRIBUTION INTENSITY DATA**

Test:U:220.27V I:0.1664A P:36.547W PF:0.9590 Freq:49.99Hz Lamp Flux:4475.54x1 lm		
NAME: GLM-DOR450D(4000K)	TYPE:LED	WEIGHT:
SPEC.:	DIM.:	SERIAL No.:1
MFR.: EVERFINE	SUR.:	Shielding Angle:

Table--4

UNIT: cd

C (DEG) γ (DEG)	285	290	295	300	305	310	315	320	325	330	335	340	345	350	355				
0	1592	1592	1592	1592	1592	1592	1592	1592	1592	1592	1592	1592	1592	1592	1592				
5	1574	1574	1575	1575	1575	1576	1576	1577	1578	1579	1580	1581	1583	1584	1586				
10	1555	1555	1555	1555	1554	1553	1552	1552	1553	1554	1555	1556	1558	1560	1563				
15	1536	1534	1531	1528	1526	1524	1522	1520	1519	1518	1518	1518	1520	1522	1526				
20	1480	1479	1480	1481	1482	1485	1483	1479	1475	1471	1469	1468	1469	1471	1475				
25	1419	1418	1416	1415	1415	1415	1416	1418	1422	1415	1410	1407	1406	1408	1412				
30	1358	1355	1351	1348	1344	1340	1338	1338	1340	1344	1342	1336	1332	1332	1336				
35	1269	1268	1269	1269	1270	1264	1257	1253	1251	1252	1255	1253	1247	1245	1249				
40	1174	1172	1170	1168	1167	1167	1170	1165	1157	1154	1154	1159	1153	1149	1151				
45	1079	1075	1070	1065	1061	1059	1058	1058	1061	1052	1046	1047	1052	1044	1045				
50	965	963	961	960	956	949	944	940	939	943	936	931	934	932	930				
55	847	844	840	836	833	831	829	823	817	815	819	812	809	813	809				
60	729	724	719	714	709	704	700	697	695	688	685	690	682	685	682				
65	603	599	595	590	586	580	573	566	562	560	556	553	555	550	551				
70	476	471	466	461	455	450	444	440	433	426	423	420	418	418	419				
75	348	344	339	333	327	320	314	308	302	297	292	287	285	285	284				
80	23.2	40.3	61.2	85.1	111	137	163	179	173	167	162	158	155	155	155				
85	0.00	0.00	0.00	0.00	0.00	0.00	0.00	0.00	0.00	0.00	24.0	35.2	32.7	36.6	34.2				
90	0.00	0.00	0.00	0.00	0.00	0.00	0.00	0.00	0.00	0.00	0.00	0.00	0.00	0.00	0.00				

H(β) Range:-90 - 90DEG  
 H(β) Interval: 1.0DEG  
 Test Speed: HIGH  
 Temperature:25.3DEG  
 Operators:  
 Test Date:06 December 2023

V(B) Range:-75 - 75DEG  
 V(B) Interval: 5.0DEG  
 Test System:EVERFINE GO-2000A\_V1 SYSTEM V2.0.366  
 Humidity:65.0%  
 Test Distance:7.500m [K=1.0667]  
 Remarks: