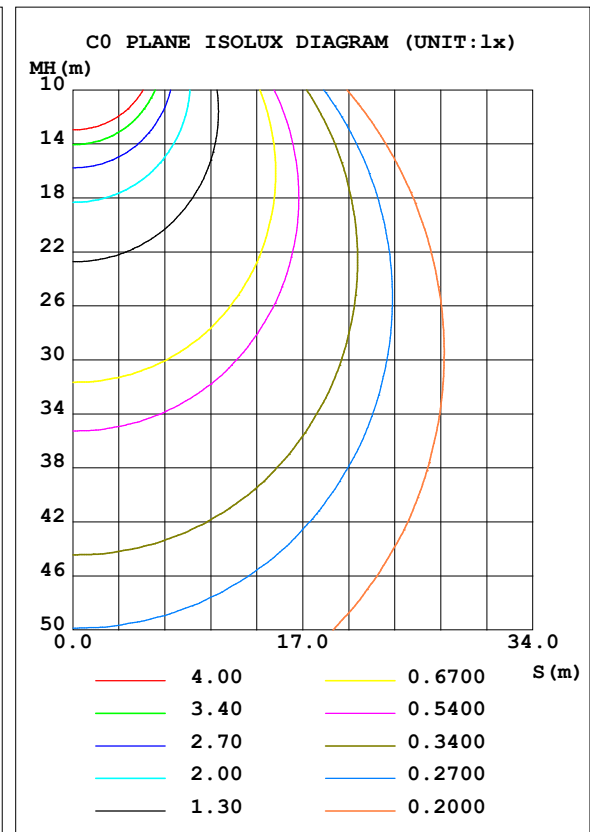
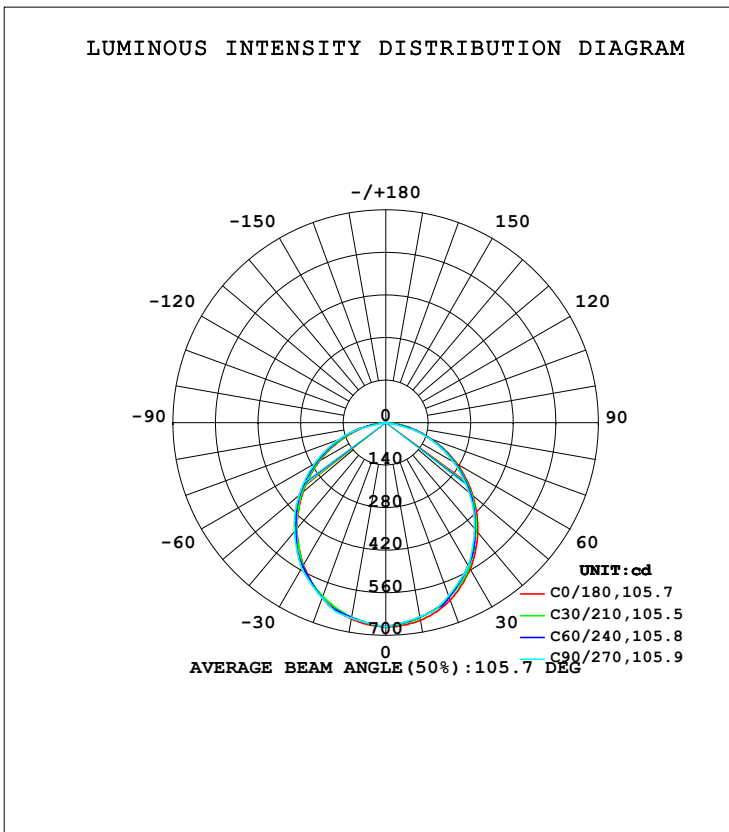


LUMINAIRE PHOTOMETRIC TEST REPORT

Test:U:219.86V I:0.0654A P:14.015W PF:0.9614 Freq:49.99Hz Lamp Flux:1745.17x1 lm		
NAME: GLM-DOS260D-15W(4000K)	TYPE:LED	WEIGHT:
SPEC.:	DIM.:	SERIAL No.:1
MFR.: EVERFINE	SUR.:	Shielding Angle:

DATA OF LAMP		PHOTOMETRIC DATA Eff: 124.52 lm/W			
MODEL		I _{max} (cd)	671.6	S/MH (C0/180)	1.21
NOMINAL POWER (W)		LOR (%)	100.0	S/MH (C90/270)	1.23
RATED VOLTAGE (V)	220.0	TOTAL FLUX (lm)	1745.2	η UP, DN (C0-180)	0.0, 49.5
NOMINAL FLUX (lm)	1745.17	CIE CLASS	DIRECT	η UP, DN (C180-360)	0.0, 50.5
LAMPS INSIDE	1	η up (%)	0.0	CIBSE SHR NOM	1.25
TEST VOLTAGE (V)	220	η down (%)	100.0	CIBSE SHR MAX	1.35



H(β) Range: -90 - 90DEG
 H(β) Interval: 1.0DEG
 Test Speed: HIGH
 Temperature: 25.3DEG
 Operators:
 Test Date: 24 Aug 2023

V(B) Range: -75 - 75DEG
 V(B) Interval: 5.0DEG
 Test System: EVERFINE GO-2000A_V1 SYSTEM V2.0.366
 Humidity: 65.0%
 Test Distance: 7.500m [K=1.0667]
 Remarks: TÜV RHEINLAND

ZONAL FLUX DIAGRAM

ZONAL FLUX DIAGRAM:

γ	C0	C45	C90	C135	C180	C225	C270	C315	γ	Φ zone	Φ total	%lum, lamp
10	659.9	649.9	648.4	647.4	655.5	649.8	652.9	652.4	0- 10	62.93	62.93	3.61,3.61
20	621.5	614.6	605.9	608.6	610.4	613.9	614.0	619.7	10- 20	179.2	242.1	13.9,13.9
30	555.9	542.8	543.8	535.1	542.0	542.1	554.7	550.4	20- 30	267.2	509.3	29.2,29.2
40	470.9	463.5	454.1	452.7	455.5	462.0	467.6	472.3	30- 40	315.4	824.7	47.3,47.3
50	373.7	363.7	357.9	353.7	355.9	362.8	373.4	373.0	40- 50	318.8	1144	65.5,65.5
60	270.0	260.1	255.2	251.0	252.1	260.9	272.2	270.6	50- 60	279.9	1423	81.6,81.6
70	161.4	154.8	150.5	147.7	145.5	157.1	166.8	163.9	60- 70	206.3	1630	93.4,93.4
80	61.26	50.08	0	45.36	46.89	50.80	0	54.86	70- 80	106.5	1736	99.5,99.5
90	0	0	0	0	0	0	0	0	80- 90	9.003	1745	100,100
100									90-100			
110									100-110			
120									110-120			
130									120-130			
140									130-140			
150									140-150			
160									150-160			
170									160-170			
180									170-180			
DEG	LUMINOUS INTENSITY:cd									UNIT:lm		

Conical surface Flux(90deg): 986.36 lm

%lum = 56.5%

%lamp = 56.5%

Conical surface Flux(120deg): 1423.4 lm

%lum = 81.6%

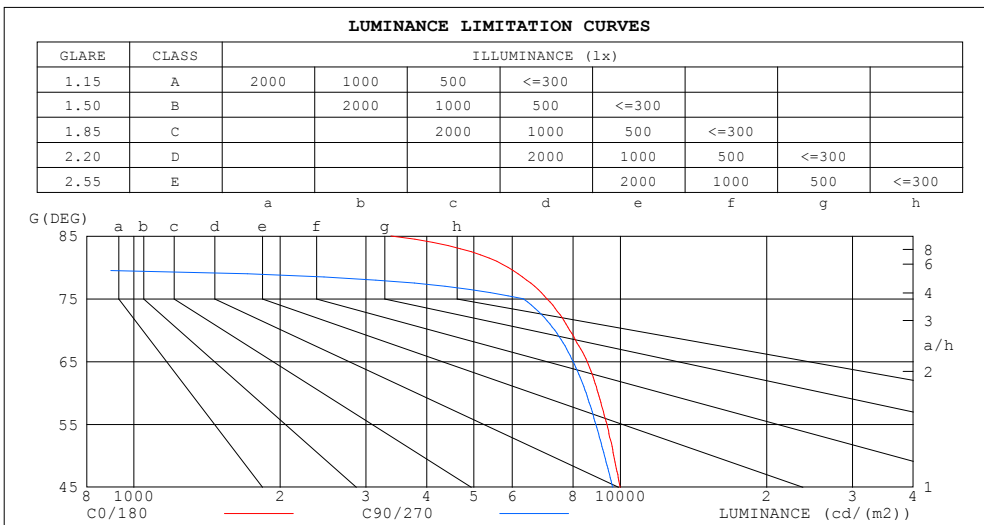
%lamp = 81.6%

H(β) Range:-90 - 90DEG
H(β) Interval: 1.0DEG
Test Speed: HIGH
Temperature:25.3DEG
Operators:
Test Date:24 Aug 2023

V(B) Range:-75 - 75DEG
V(B) Interval: 5.0DEG
Test System:EVERFINE GO-2000A_V1 SYSTEM V2.0.366
Humidity:65.0%
Test Distance:7.500m [K=1.0667]
Remarks: TÜV RHEINLAND

LUMINANCE LIMITATION CURVES

Test:U:219.86V I:0.0654A P:14.015W PF:0.9614 Freq:49.99Hz Lamp Flux:1745.17x1 lm		
NAME: GLM-DOS260D-15W(4000K)	TYPE:LED	WEIGHT:
SPEC.:	DIM.:	SERIAL No.:1
MFR.: EVERFINE	SUR.:	Shielding Angle:



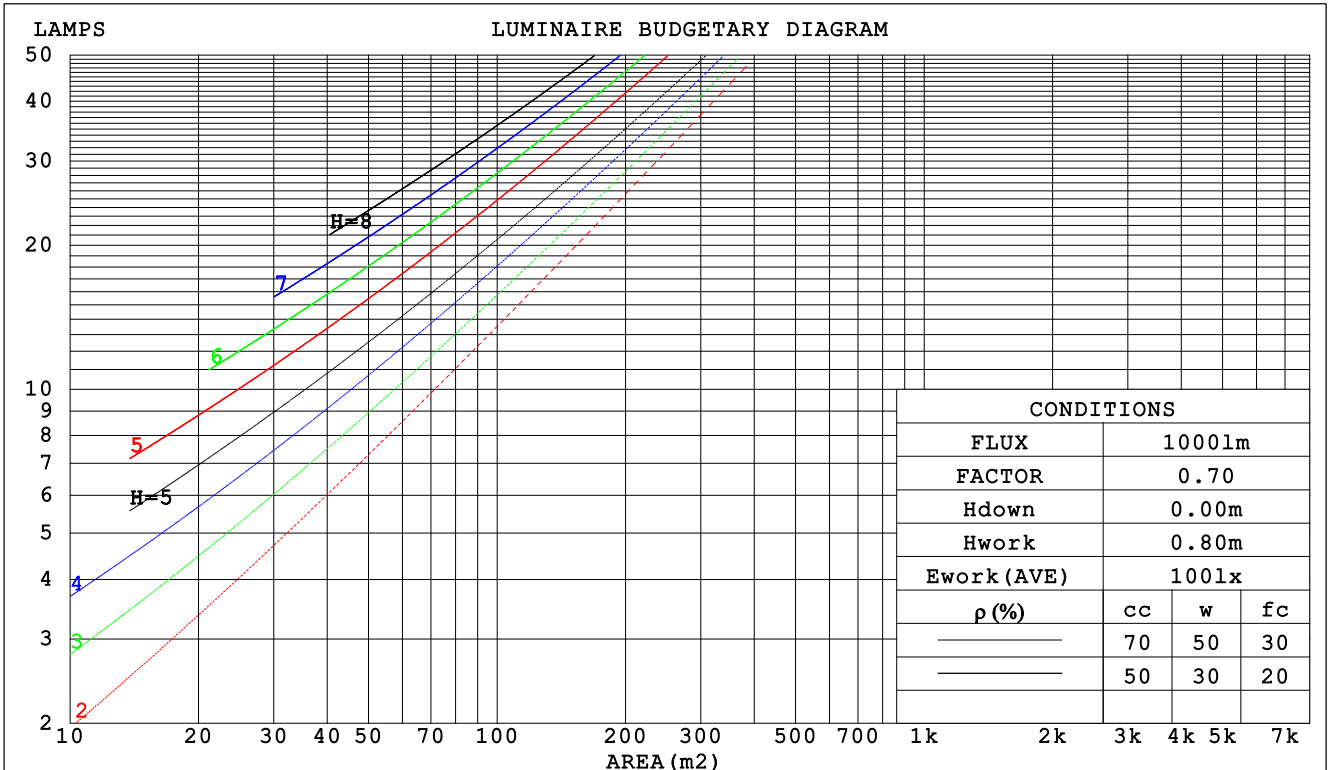
H(β) Range:-90 - 90DEG
H(β) Interval: 1.0DEG
Test Speed: HIGH
Temperature:25.3DEG
Operators:
Test Date:24 Aug 2023

V(B) Range:-75 - 75DEG
V(B) Interval: 5.0DEG
Test System:EVERFINE GO-2000A_V1 SYSTEM V2.0.366
Humidity:65.0%
Test Distance:7.500m [K=1.0667]
Remarks: TÜV RHEINLAND

CU AND LUMINAIRE BUDGETARY ESTIMATE DIAGRAM

Test:U:219.86V I:0.0654A P:14.015W PF:0.9614 Freq:49.99Hz Lamp Flux:1745.17x1 lm		
NAME: GLM-DOS260D-15W(4000K)	TYPE:LED	WEIGHT:
SPEC.:	DIM.:	SERIAL No.:1
MFR.: EVERFINE	SUR.:	Shielding Angle:

ρ_{cc}	80%			70%			50%			30%			10%			0
ρ_w	50%	30%	10%	50%	30%	10%	50%	30%	10%	50%	30%	10%	50%	30%	10%	0
ρ_{fc}	20%			20%			20%			20%			20%			0
RCR	RCR:Room Cavity Ratio			Coefficients of Utilization(CU)												
0.0	1.19	1.19	1.19	1.16	1.16	1.16	1.11	1.11	1.11	1.06	1.06	1.06	1.02	1.02	1.02	1.00
1.0	1.05	1.01	.97	1.03	.99	.96	.98	.95	.93	.95	.92	.90	.91	.89	.87	.85
2.0	.92	.85	.80	.90	.84	.79	.86	.81	.77	.83	.79	.75	.80	.77	.74	.71
3.0	.81	.73	.67	.79	.72	.66	.76	.70	.65	.74	.68	.64	.71	.67	.63	.61
4.0	.72	.63	.57	.70	.62	.56	.68	.61	.55	.66	.60	.55	.64	.58	.54	.52
5.0	.64	.55	.49	.63	.55	.49	.61	.54	.48	.59	.53	.48	.57	.52	.47	.45
6.0	.58	.49	.43	.57	.49	.43	.55	.48	.42	.53	.47	.42	.52	.46	.41	.39
7.0	.53	.44	.38	.52	.44	.38	.50	.43	.37	.49	.42	.37	.47	.41	.37	.35
8.0	.48	.40	.34	.47	.39	.34	.46	.39	.34	.45	.38	.33	.44	.38	.33	.31
9.0	.44	.36	.30	.44	.36	.30	.42	.35	.30	.41	.35	.30	.40	.34	.30	.28
10.0	.41	.33	.28	.40	.33	.28	.39	.32	.27	.38	.32	.27	.37	.31	.27	.26



H(β) Range:-90 - 90DEG
H(β) Interval: 1.0DEG
Test Speed: HIGH
Temperature:25.3DEG
Operators:
Test Date:24 Aug 2023

V(B) Range:-75 - 75DEG
V(B) Interval: 5.0DEG
Test System:EVERFINE GO-2000A_V1 SYSTEM V2.0.366
Humidity:65.0%
Test Distance:7.500m [K=1.0667]
Remarks: TÜV RHEINLAND

WEC AND CCEC

Test:U:219.86V I:0.0654A P:14.015W PF:0.9614 Freq:49.99Hz Lamp Flux:1745.17x1 lm		
NAME: GLM-DOS260D-15W(4000K)	TYPE:LED	WEIGHT:
SPEC.:	DIM.:	SERIAL No.:1
MFR.: EVERFINE	SUR.:	Shielding Angle:

ρ_{cc}	80%			70%			50%			30%			10%			0
ρ_w	50%	30%	10%	50%	30%	10%	50%	30%	10%	50%	30%	10%	50%	30%	10%	0
ρ_{fc}	20%			20%			20%			20%			20%			0
RCR	RCR:Room Cavity Ratio						Wall Exitance Coefficients (WEC)									
0.0																
1.0	.289	.164	.052	.282	.161	.051	.268	.154	.049	.256	.148	.047	.245	.142	.046	
2.0	.278	.152	.047	.272	.150	.046	.260	.145	.045	.250	.140	.044	.240	.136	.043	
3.0	.260	.138	.041	.255	.136	.041	.245	.133	.040	.235	.129	.040	.226	.125	.039	
4.0	.242	.126	.037	.237	.124	.037	.228	.121	.036	.219	.118	.036	.212	.115	.035	
5.0	.225	.114	.033	.220	.113	.033	.212	.111	.033	.205	.108	.032	.198	.106	.032	
6.0	.209	.105	.030	.205	.104	.030	.198	.101	.030	.191	.099	.029	.185	.097	.029	
7.0	.195	.096	.027	.192	.095	.027	.185	.094	.027	.179	.092	.027	.174	.090	.027	
8.0	.182	.089	.025	.179	.088	.025	.174	.087	.025	.168	.085	.025	.163	.084	.024	
9.0	.171	.083	.023	.169	.082	.023	.163	.081	.023	.159	.080	.023	.154	.078	.023	
10.0	.161	.077	.021	.159	.077	.021	.154	.076	.021	.150	.074	.021	.146	.073	.021	

ρ_{cc}	80%			70%			50%			30%			10%			0
ρ_w	50%	30%	10%	50%	30%	10%	50%	30%	10%	50%	30%	10%	50%	30%	10%	0
ρ_{fc}	20%			20%			20%			20%			20%			0
RCR	RCR:Room Cavity Ratio						Ceiling Cavity Exitance Coefficients (CCEC)									
0.0	.190	.190	.190	.163	.163	.163	.111	.111	.111	.064	.064	.064	.020	.020	.020	
1.0	.179	.156	.136	.153	.134	.117	.105	.092	.081	.060	.053	.047	.019	.017	.015	
2.0	.170	.132	.100	.146	.114	.086	.100	.079	.060	.058	.046	.035	.019	.015	.011	
3.0	.163	.114	.076	.139	.099	.066	.096	.068	.046	.055	.040	.027	.018	.013	.009	
4.0	.155	.101	.059	.133	.087	.052	.091	.061	.036	.053	.036	.022	.017	.012	.007	
5.0	.148	.090	.048	.127	.078	.042	.087	.055	.030	.051	.032	.018	.016	.010	.006	
6.0	.141	.082	.040	.121	.071	.035	.083	.050	.025	.048	.029	.015	.016	.010	.005	
7.0	.134	.075	.034	.115	.065	.029	.080	.046	.021	.046	.027	.012	.015	.009	.004	
8.0	.128	.069	.029	.110	.060	.025	.076	.042	.018	.044	.025	.011	.014	.008	.004	
9.0	.122	.064	.026	.105	.056	.022	.073	.039	.016	.042	.023	.009	.014	.008	.003	
10.0	.116	.060	.023	.100	.052	.020	.069	.037	.014	.040	.022	.008	.013	.007	.003	

H(β) Range:-90 - 90DEG
H(β) Interval: 1.0DEG
Test Speed: HIGH
Temperature:25.3DEG
Operators:
Test Date:24 Aug 2023

V(B) Range:-75 - 75DEG
V(B) Interval: 5.0DEG
Test System:EVERFINE GO-2000A_V1 SYSTEM V2.0.366
Humidity:65.0%
Test Distance:7.500m [K=1.0667]
Remarks: TÜV RHEINLAND

UGR(Unified Glare Rating) Table

Test:U:219.86V I:0.0654A P:14.015W PF:0.9614 Freq:49.99Hz Lamp Flux:1745.17x1 lm										
NAME: GLM-DOS260D-15W(4000K)					TYPE:LED			WEIGHT:		
SPEC.:					DIM.:			SERIAL No.:1		
MFR.: EVERFINE					SUR.:			Shielding Angle:		
ceiling/cavity	0.7	0.7	0.5	0.5	0.3	0.7	0.7	0.5	0.5	0.3
walls	0.5	0.3	0.5	0.3	0.3	0.5	0.3	0.5	0.3	0.3
working plane	0.2	0.2	0.2	0.2	0.2	0.2	0.2	0.2	0.2	0.2
Room dimensions	Viewed crosswise					Viewed endwise				
x = 2H y = 2H	20.6	22.1	20.9	22.3	22.5	20.4	21.9	20.7	22.1	22.3
3H	22.0	23.4	22.3	23.6	23.9	21.8	23.2	22.1	23.4	23.6
4H	22.6	23.9	22.9	24.1	24.4	22.3	23.6	22.6	23.8	24.1
6H	22.9	24.1	23.3	24.4	24.7	22.3	23.5	22.6	23.8	24.1
8H	23.0	24.2	23.3	24.5	24.8	22.2	23.4	22.6	23.7	24.0
12H	23.0	24.1	23.4	24.4	24.7	22.2	23.3	22.5	23.6	23.9
4H 2H	21.2	22.5	21.5	22.7	23.0	21.0	22.3	21.3	22.6	22.8
3H	22.8	23.9	23.1	24.2	24.5	22.6	23.7	22.9	24.0	24.3
4H	23.4	24.5	23.8	24.8	25.1	23.2	24.2	23.5	24.5	24.8
6H	23.9	24.8	24.3	25.1	25.5	23.2	24.1	23.6	24.5	24.8
8H	24.0	24.9	24.4	25.2	25.6	23.2	24.0	23.6	24.4	24.8
12H	24.0	24.8	24.5	25.2	25.6	23.1	23.9	23.6	24.3	24.7
8H 4H	23.6	24.5	24.0	24.8	25.2	23.4	24.2	23.8	24.6	25.0
6H	24.2	24.9	24.6	25.3	25.7	23.5	24.2	23.9	24.6	25.0
8H	24.4	25.0	24.8	25.4	25.9	23.5	24.1	23.9	24.5	24.9
12H	24.5	25.0	24.9	25.4	25.9	23.4	23.9	23.9	24.4	24.9
12H 4H	23.6	24.4	24.0	24.8	25.2	23.4	24.2	23.8	24.5	24.9
6H	24.2	24.8	24.6	25.2	25.7	23.5	24.1	24.0	24.5	25.0
8H	24.4	24.9	24.9	25.4	25.8	23.5	24.0	23.9	24.4	24.9
Variations with the observer position at spacings:										
S = 1.0H	+ 0.2 / - 0.2					+ 0.2 / - 0.3				
1.5H	+ 0.2 / - 0.3					+ 0.1 / - 0.3				
2.0H	+ 0.2 / - 0.3					+ 0.3 / - 0.3				

CIE Pub.117, 1745 lm Total Lamp Luminous Flux Corrected ($8\log(F/F_0) = 1.9$)

H(β) Range:-90 - 90DEG
H(β) Interval: 1.0DEG
Test Speed: HIGH
Temperature:25.3DEG
Operators:
Test Date:24 Aug 2023

V(B) Range:-75 - 75DEG
V(B) Interval: 5.0DEG
Test System:EVERFINE GO-2000A_V1 SYSTEM V2.0.366
Humidity:65.0%
Test Distance:7.500m [K=1.0667]
Remarks: TÜV RHEINLAND

UTILIZATION FACTORS TABLE

Test:U:219.86V I:0.0654A P:14.015W PF:0.9614 Freq:49.99Hz Lamp Flux:1745.17x1 lm		
NAME: GLM-DOS260D-15W(4000K)	TYPE:LED	WEIGHT:
SPEC.:	DIM.:	SERIAL No.:1
MFR.: EVERFINE	SUR.:	Shielding Angle:

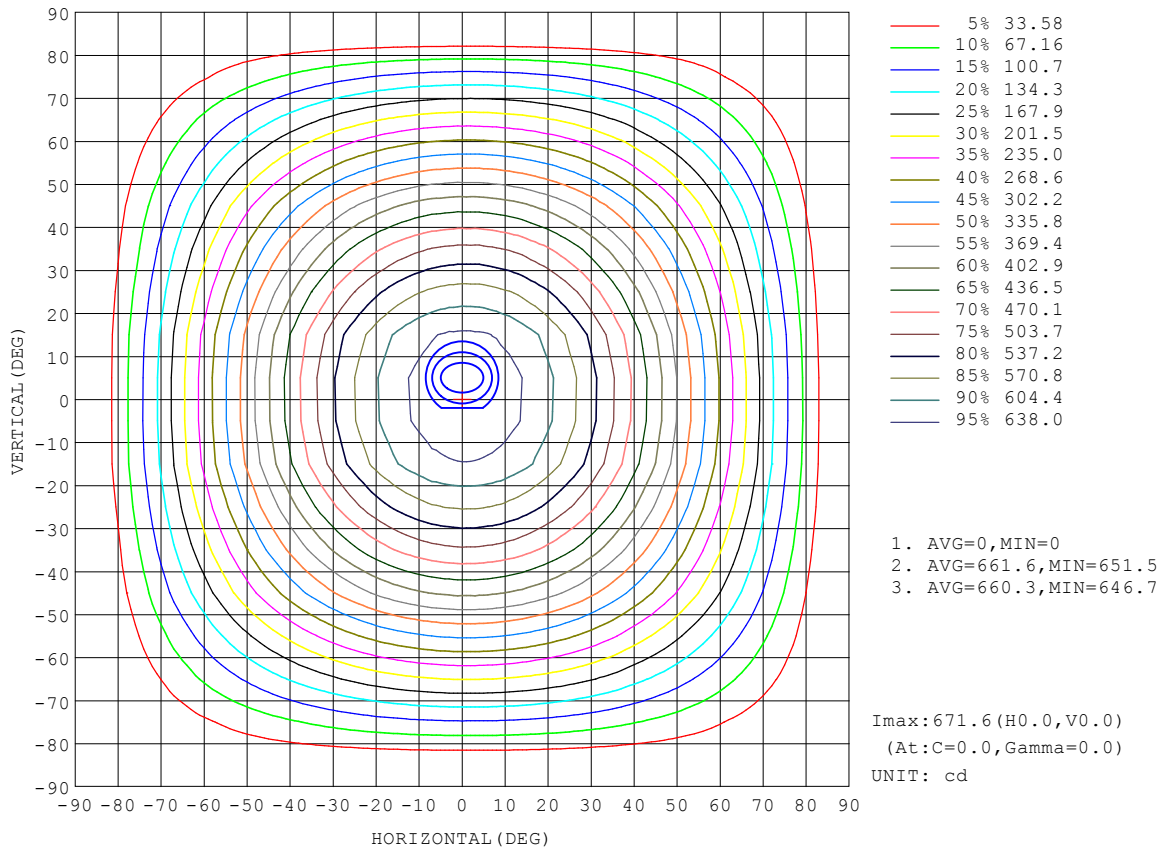
REFLECTANCE										
Ceiling	0.8	0.8	0.8	0.7	0.7	0.7	0.5	0.5	0.5	0
Walls	0.7	0.5	0.3	0.7	0.5	0.3	0.7	0.5	0.3	0
Working plane	0.2	0.2	0.2	0.2	0.2	0.2	0.2	0.2	0.2	0
ROOM INDEX	UTILIZATION FACTORS (PERCENT) k(RI) x RCR = 5									
k = 0.60	59	48	41	58	47	41	57	47	41	34
0.80	69	58	51	68	57	50	66	57	50	43
1.00	78	67	60	76	66	59	74	68	59	52
1.25	85	74	68	83	74	67	81	72	66	59
1.50	90	80	73	88	79	73	85	77	72	65
2.00	96	88	82	94	87	81	91	85	80	72
2.50	100	93	87	98	91	86	94	89	84	76
3.00	103	97	92	101	95	91	97	92	88	80
4.00	107	102	98	105	100	96	101	97	93	85
5.00	110	105	101	107	103	100	103	99	97	88
ROOM INDEX	UF(total)									Direct
According to DIN EN 13032-2 2004			Suspended				SHRNOM = 1.25			

H(β) Range:-90 - 90DEG
H(β) Interval: 1.0DEG
Test Speed: HIGH
Temperature:25.3DEG
Operators:
Test Date:24 Aug 2023

V(B) Range:-75 - 75DEG
V(B) Interval: 5.0DEG
Test System:EVERFINE GO-2000A_V1 SYSTEM V2.0.366
Humidity:65.0%
Test Distance:7.500m [K=1.0667]
Remarks: TÜV RHEINLAND

ISOCANDELA DIAGRAM

Test:U:219.86V I:0.0654A P:14.015W PF:0.9614 Freq:49.99Hz Lamp Flux:1745.17x1 lm		
NAME: GLM-DOS260D-15W(4000K)	TYPE:LED	WEIGHT:
SPEC.:	DIM.:	SERIAL No.:1
MFR.: EVERFINE	SUR.:	Shielding Angle:

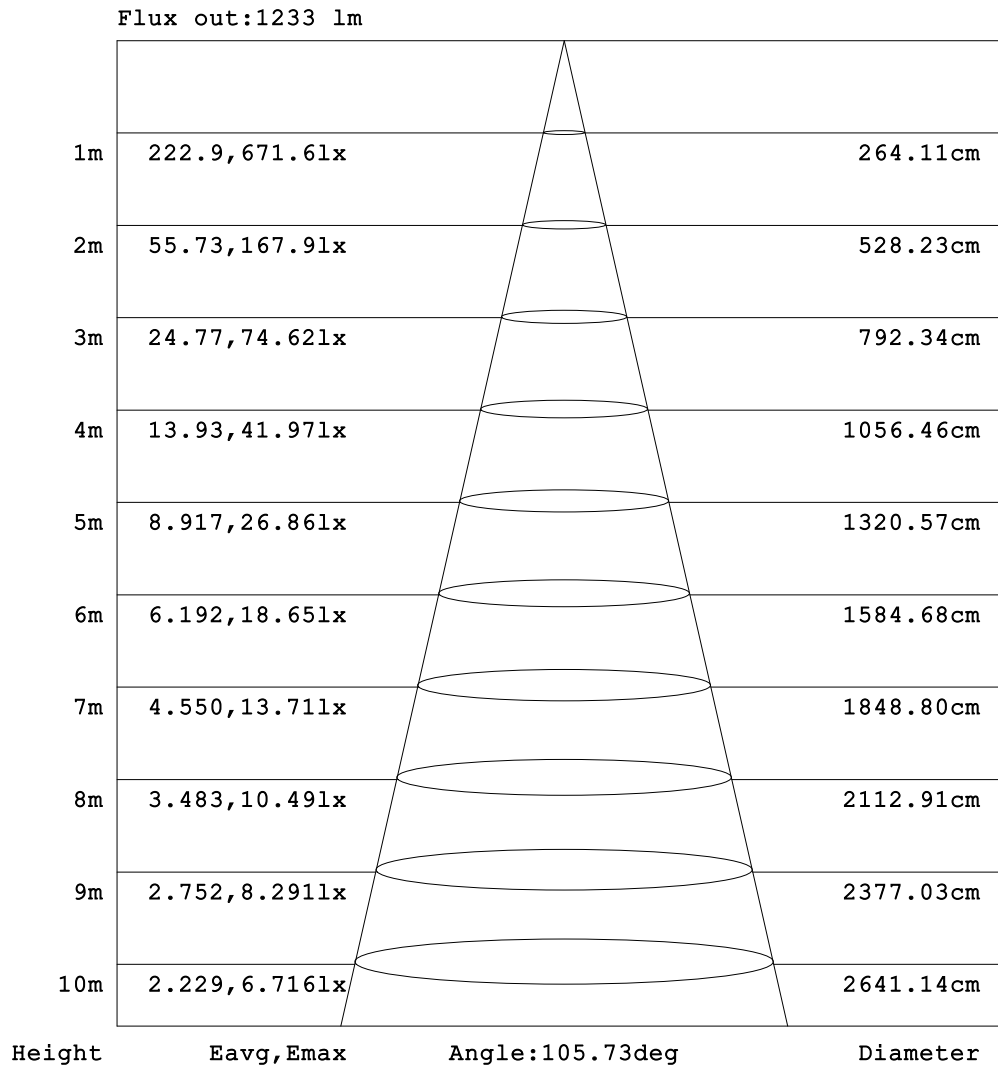


H(β) Range:-90 - 90DEG
 H(β) Interval: 1.0DEG
 Test Speed: HIGH
 Temperature:25.3DEG
 Operators:
 Test Date:24 Aug 2023

V(B) Range:-75 - 75DEG
 V(B) Interval: 5.0DEG
 Test System:EVERFINE GO-2000A_V1 SYSTEM V2.0.366
 Humidity:65.0%
 Test Distance:7.500m [K=1.0667]
 Remarks: TÜV RHEINLAND

AAI Figure

Test:U:219.86V I:0.0654A P:14.015W PF:0.9614 Freq:49.99Hz Lamp Flux:1745.17x1 lm		
NAME: GLM-DOS260D-15W(4000K)	TYPE:LED	WEIGHT:
SPEC.:	DIM.:	SERIAL No.:1
MFR.: EVERFINE	SUR.:	Shielding Angle:



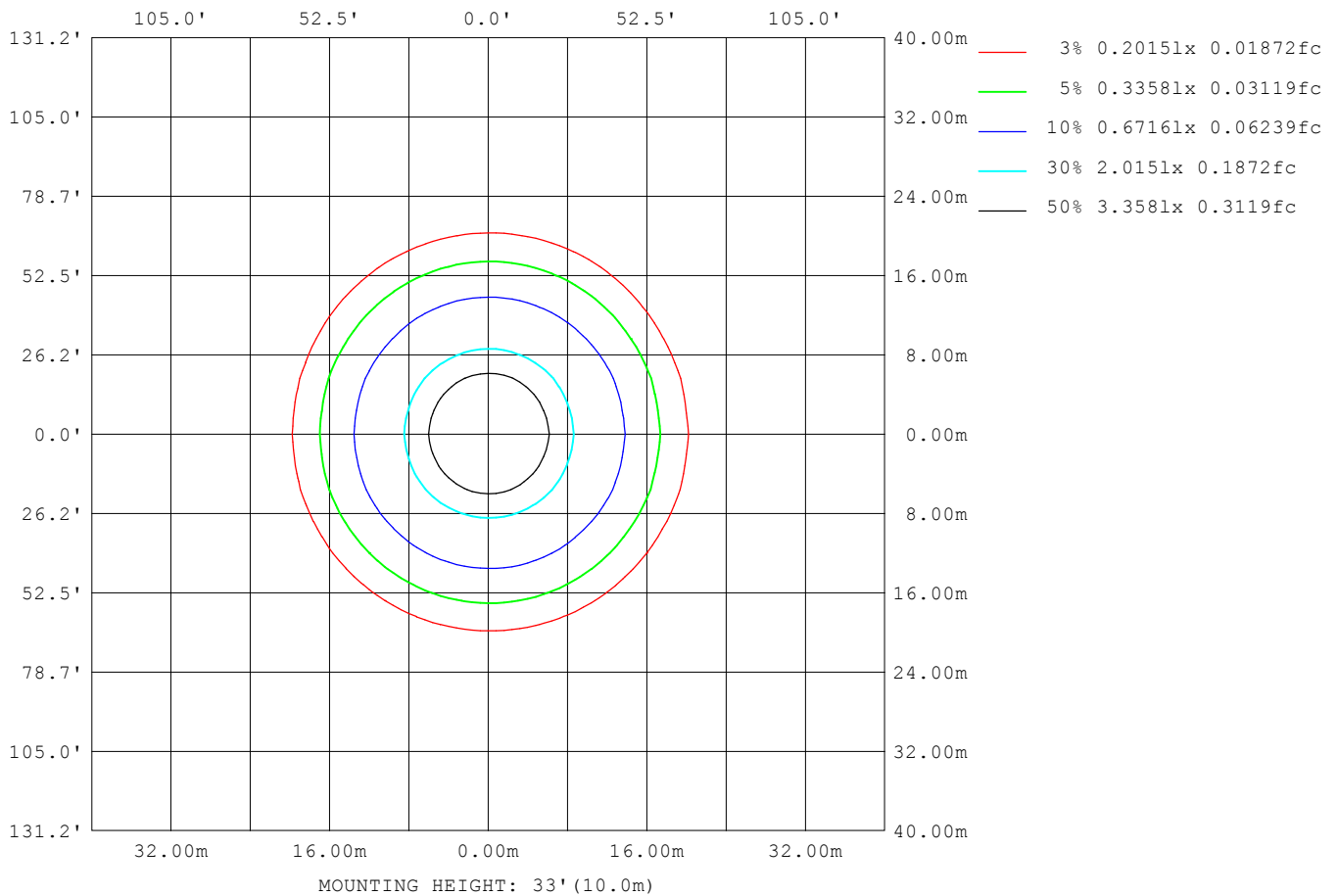
Note:The Curves indicate the illuminated area and the average illumination when the luminaire is at different distance.

H(β) Range:-90 - 90DEG
H(β) Interval: 1.0DEG
Test Speed: HIGH
Temperature:25.3DEG
Operators:
Test Date:24 Aug 2023

V(B) Range:-75 - 75DEG
V(B) Interval: 5.0DEG
Test System:EVERFINE GO-2000A_V1 SYSTEM V2.0.366
Humidity:65.0%
Test Distance:7.500m [K=1.0667]
Remarks: TÜV RHEINLAND

ISOLUX DIAGRAM

Test:U:219.86V I:0.0654A P:14.015W PF:0.9614 Freq:49.99Hz Lamp Flux:1745.17x1 lm		
NAME: GLM-DOS260D-15W(4000K)	TYPE:LED	WEIGHT:
SPEC.:	DIM.:	SERIAL No.:1
MFR.: EVERFINE	SUR.:	Shielding Angle:



H(β) Range:-90 - 90DEG
H(β) Interval: 1.0DEG
Test Speed: HIGH
Temperature:25.3DEG
Operators:
Test Date:24 Aug 2023

V(B) Range:-75 - 75DEG
V(B) Interval: 5.0DEG
Test System:EVERFINE GO-2000A_V1 SYSTEM V2.0.366
Humidity:65.0%
Test Distance:7.500m [K=1.0667]
Remarks: TÜV RHEINLAND

LED Avg.L Report

Test:U:219.86V I:0.0654A P:14.015W PF:0.9614 Freq:49.99Hz Lamp Flux:1745.17x1 lm		
NAME: GLM-DOS260D-15W(4000K)	TYPE:LED	WEIGHT:
SPEC.:	DIM.:	SERIAL No.:1
MFR.: EVERFINE	SUR.:	Shielding Angle:

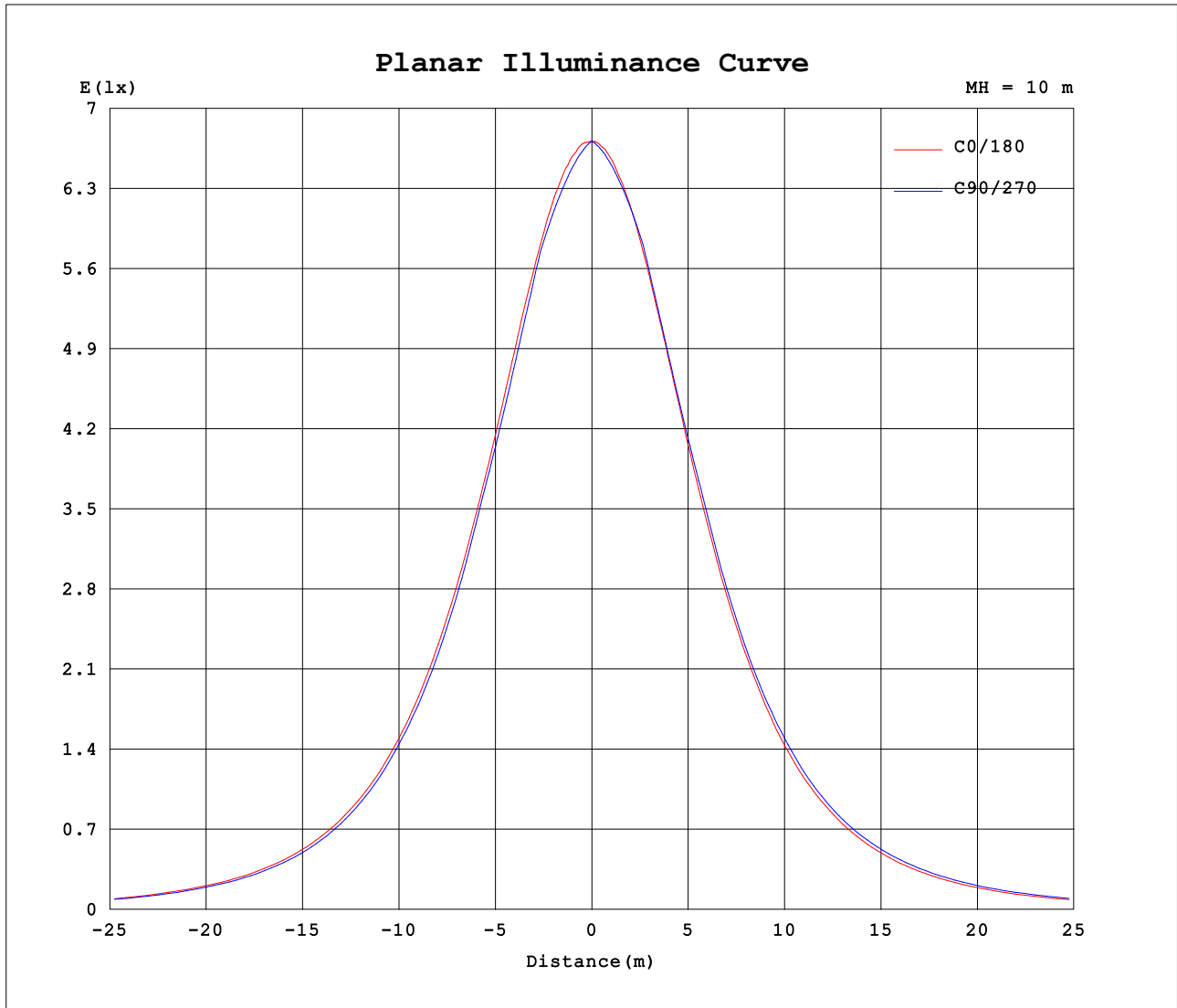
AvgL	cd/m2
L_0~180 (65) av	8199
L_0~180 (75) av	6580
L_0~180 (85) av	2202
L_90~270 (65) av	8328
L_90~270 (75) av	6831
L_90~270 (85) av	0
L_45 (65) av	8195
L_45 (75) av	6770
L_45 (85) av	0

Standard: GB/T 29293-2012

H(β) Range:-90 - 90DEG
H(β) Interval: 1.0DEG
Test Speed: HIGH
Temperature:25.3DEG
Operators:
Test Date:24 Aug 2023

V(B) Range:-75 - 75DEG
V(B) Interval: 5.0DEG
Test System:EVERFINE GO-2000A_V1 SYSTEM V2.0.366
Humidity:65.0%
Test Distance:7.500m [K=1.0667]
Remarks: TÜV RHEINLAND

Planar Illuminance Curve



H(β) Range:-90 - 90DEG
H(β) Interval: 1.0DEG
Test Speed: HIGH
Temperature:25.3DEG
Operators:
Test Date:24 Aug 2023

V(B) Range:-75 - 75DEG
V(B) Interval: 5.0DEG
Test System:EVERFINE GO-2000A_V1 SYSTEM V2.0.366
Humidity:65.0%
Test Distance:7.500m [K=1.0667]
Remarks: TÜV RHEINLAND

LUMINOUS DISTRIBUTION INTENSITY DATA

Test:U:219.86V I:0.0654A P:14.015W PF:0.9614 Freq:49.99Hz Lamp Flux:1745.17x1 lm		
NAME: GLM-DOS260D-15W(4000K)	TYPE:LED	WEIGHT:
SPEC.:	DIM.:	SERIAL No.:1
MFR.: EVERFINE	SUR.:	Shielding Angle:

Table--1

UNIT: cd

C (DEG) \ y (DEG)	0	5	10	15	20	25	30	35	40	45	50	55	60	65	70	75	80	85	90
0	672	672	672	672	672	672	672	672	672	672	672	672	672	672	672	672	672	672	672
5	668	668	667	666	665	664	664	663	663	663	662	662	661	661	660	660	660	660	660
10	660	658	656	655	654	653	652	651	651	650	650	649	649	649	649	649	649	648	648
15	644	641	639	637	635	634	634	633	634	634	635	635	636	636	636	637	637	637	637
20	621	618	615	612	611	611	611	612	614	615	614	612	611	610	608	607	607	606	606
25	590	586	583	582	581	582	583	586	583	580	580	578	577	577	576	575	575	575	575
30	556	551	548	547	547	549	549	546	544	543	542	542	543	544	544	544	544	544	544
35	515	510	507	507	509	509	506	505	504	504	505	506	505	503	502	501	500	500	499
40	471	466	464	464	466	462	461	461	463	464	461	459	458	457	457	456	455	455	454
45	424	419	418	420	417	415	416	418	415	414	413	411	411	411	411	410	410	410	409
50	374	369	369	369	367	368	369	366	364	364	364	364	363	362	361	360	359	359	358
55	323	318	319	317	317	318	315	314	314	315	313	312	311	310	309	308	308	307	307
60	270	266	267	265	267	264	263	264	262	260	260	259	259	258	257	257	256	256	255
65	217	214	213	215	212	212	211	209	208	207	208	208	207	206	205	204	204	203	203
70	161	161	160	159	160	158	157	156	155	155	155	155	154	154	153	152	151	151	150
75	110	109	109	109	108	107	106	106	105	105	104	104	103	102	101	100.0	99.1	98.5	98.1
80	61.3	60.8	60.4	60.0	59.7	59.1	58.6	57.9	56.8	50.1	41.4	32.8	24.8	17.6	11.5	6.54	2.92	0.73	0.00
85	17.7	10.2	15.3	16.4	15.4	9.14	0.00	0.00	0.00	0.00	0.00	0.00	0.00	0.00	0.00	0.00	0.00	0.00	0.00
90	0.00	0.00	0.00	0.00	0.00	0.00	0.00	0.00	0.00	0.00	0.00	0.00	0.00	0.00	0.00	0.00	0.00	0.00	0.00

H(β) Range:-90 - 90DEG
H(β) Interval: 1.0DEG
Test Speed: HIGH
Temperature:25.3DEG
Operators:
Test Date:24 Aug 2023

V(B) Range:-75 - 75DEG
V(B) Interval: 5.0DEG
Test System:EVERFINE GO-2000A_V1 SYSTEM V2.0.366
Humidity:65.0%
Test Distance:7.500m [K=1.0667]
Remarks: TÜV RHEINLAND

LUMINOUS DISTRIBUTION INTENSITY DATA

Test:U:219.86V I:0.0654A P:14.015W PF:0.9614 Freq:49.99Hz Lamp Flux:1745.17x1 lm		
NAME: GLM-DOS260D-15W(4000K)	TYPE:LED	WEIGHT:
SPEC.:	DIM.:	SERIAL No.:1
MFR.: EVERFINE	SUR.:	Shielding Angle:

Table--2

UNIT: cd

C (DEG) γ (DEG)	95	100	105	110	115	120	125	130	135	140	145	150	155	160	165	170	175	180	185
0	672	672	672	672	672	672	672	672	672	672	672	672	672	672	672	672	672	672	672
5	660	660	660	660	660	660	660	660	661	661	662	662	663	664	664	665	666	667	666
10	648	648	648	647	647	647	647	647	647	647	647	648	649	649	651	652	654	656	654
15	636	636	635	634	634	633	631	630	629	629	628	629	629	629	630	632	634	637	635
20	605	605	605	606	606	606	607	609	609	607	605	603	603	603	603	605	607	610	608
25	574	573	573	573	572	572	572	573	574	576	578	575	572	571	572	573	575	579	576
30	542	541	541	539	538	537	536	535	535	535	537	539	539	536	534	535	538	542	538
35	498	497	497	497	497	498	498	497	495	493	493	494	497	497	494	493	495	500	496
40	453	453	452	451	451	451	451	451	453	451	449	449	450	453	451	449	451	456	452
45	409	408	407	406	405	404	403	403	403	404	405	402	401	403	406	402	402	406	403
50	357	357	356	356	357	356	356	355	354	353	353	355	353	353	355	353	352	356	354
55	306	305	305	304	304	304	304	304	305	303	302	302	303	302	302	304	301	304	302
60	254	254	253	253	252	251	251	251	251	252	253	251	250	251	250	252	250	252	250
65	202	202	201	201	200	200	199	199	199	198	199	199	197	197	198	198	198	199	198
70	150	150	149	149	149	149	148	148	148	147	147	146	146	146	145	145	145	146	145
75	97.7	97.8	97.6	97.7	97.8	98.0	97.9	98.1	98.0	97.8	97.8	97.4	96.6	95.8	96.3	95.5	94.6	94.7	94.1
80	0.73	2.88	6.38	11.1	16.9	23.5	30.7	38.1	45.4	50.6	51.0	51.4	50.4	49.6	47.9	46.7	46.0	46.9	46.7
85	0.00	0.00	0.00	0.00	0.00	0.00	0.00	0.00	0.00	0.00	0.00	0.00	6.58	8.79	7.99	5.69	0.40	5.36	6.32
90	0.00	0.00	0.00	0.00	0.00	0.00	0.00	0.00	0.00	0.00	0.00	0.00	0.00	0.00	0.00	0.00	0.00	0.00	0.00

H(β) Range:-90 - 90DEG
H(β) Interval: 1.0DEG
Test Speed: HIGH
Temperature:25.3DEG
Operators:
Test Date:24 Aug 2023

V(B) Range:-75 - 75DEG
V(B) Interval: 5.0DEG
Test System:EVERFINE GO-2000A_V1 SYSTEM V2.0.366
Humidity:65.0%
Test Distance:7.500m [K=1.0667]
Remarks: TÜV RHEINLAND

LUMINOUS DISTRIBUTION INTENSITY DATA

Test:U:219.86V I:0.0654A P:14.015W PF:0.9614 Freq:49.99Hz Lamp Flux:1745.17x1 lm		
NAME: GLM-DOS260D-15W(4000K)	TYPE:LED	WEIGHT:
SPEC.:	DIM.:	SERIAL No.:1
MFR.: EVERFINE	SUR.:	Shielding Angle:

Table--3

UNIT: cd

C (DEG) γ (DEG)	190	195	200	205	210	215	220	225	230	235	240	245	250	255	260	265	270	275	280
0	672	672	672	672	672	672	672	672	672	672	672	672	672	672	672	672	672	672	672
5	666	665	665	664	664	663	663	663	662	662	662	662	662	662	662	662	662	662	662
10	653	652	651	650	650	649	649	650	650	651	651	651	652	652	652	653	653	653	653
15	633	632	631	631	632	632	633	634	635	636	638	639	641	642	643	643	644	644	643
20	606	605	605	606	608	610	612	614	615	614	613	613	613	613	614	613	614	614	615
25	574	574	575	577	579	583	582	580	580	579	580	581	581	582	583	583	584	584	585
30	537	537	539	543	544	543	542	542	543	545	546	548	549	551	553	554	555	555	555
35	496	497	501	502	500	500	501	503	506	508	508	508	509	509	510	510	511	512	512
40	451	454	457	455	455	457	460	462	461	462	462	463	464	465	466	467	468	468	468
45	404	408	407	407	409	412	412	412	413	415	416	418	419	422	423	423	424	425	424
50	356	358	356	359	361	360	361	363	366	369	370	370	370	372	373	373	373	374	374
55	306	305	306	309	308	310	312	314	315	316	317	318	319	320	321	322	323	324	324
60	253	252	255	255	256	260	260	261	262	264	265	267	269	270	271	272	272	273	273
65	199	200	200	202	205	205	207	209	210	213	214	215	217	217	218	219	220	220	220
70	145	146	148	149	151	153	155	157	159	160	162	162	164	165	166	166	167	167	167
75	95.0	96.6	97.1	99.5	102	103	105	106	107	108	110	111	111	112	113	113	114	115	114
80	48.8	49.3	50.7	52.4	54.0	55.0	55.8	50.8	43.1	34.9	26.9	19.4	12.8	7.38	3.34	0.84	0.00	0.85	3.39
85	8.75	7.92	8.92	7.08	0.00	0.00	0.00	0.00	0.00	0.00	0.00	0.00	0.00	0.00	0.00	0.00	0.00	0.00	0.00
90	0.00	0.00	0.00	0.00	0.00	0.00	0.00	0.00	0.00	0.00	0.00	0.00	0.00	0.00	0.00	0.00	0.00	0.00	0.00

H(β) Range:-90 - 90DEG	V(B) Range:-75 - 75DEG
H(β) Interval: 1.0DEG	V(B) Interval: 5.0DEG
Test Speed: HIGH	Test System:EVERFINE GO-2000A_V1 SYSTEM V2.0.366
Temperature:25.3DEG	Humidity:65.0%
Operators:	Test Distance:7.500m [K=1.0667]
Test Date:24 Aug 2023	Remarks: TÜV RHEINLAND

LUMINOUS DISTRIBUTION INTENSITY DATA

Test:U:219.86V I:0.0654A P:14.015W PF:0.9614 Freq:49.99Hz Lamp Flux:1745.17x1 lm		
NAME: GLM-DOS260D-15W(4000K)	TYPE:LED	WEIGHT:
SPEC.:	DIM.:	SERIAL No.:1
MFR.: EVERFINE	SUR.:	Shielding Angle:

Table--4

UNIT: cd

C (DEG) \ γ (DEG)	285	290	295	300	305	310	315	320	325	330	335	340	345	350	355				
0	672	672	672	672	672	672	672	672	672	672	672	672	672	672	672				
5	662	663	663	663	664	664	664	664	665	665	665	666	666	667	668				
10	653	653	653	653	653	653	652	653	654	654	654	655	656	657	658				
15	643	643	642	641	640	639	638	638	637	637	637	637	638	640	642				
20	615	615	616	617	619	620	620	618	617	615	615	614	615	616	618				
25	585	585	585	586	586	586	588	589	592	588	586	585	584	585	587				
30	555	554	554	553	552	551	550	551	552	554	554	550	549	550	552				
35	513	514	515	515	517	514	513	511	511	512	513	513	510	509	511				
40	468	469	468	469	469	471	472	470	468	467	467	470	468	466	467				
45	424	424	423	423	422	422	422	423	426	422	420	421	423	419	420				
50	375	375	375	375	375	374	373	373	373	376	372	371	372	371	370				
55	324	324	324	324	323	324	324	323	321	321	323	321	319	321	319				
60	273	273	273	272	272	271	271	270	271	269	268	270	267	268	267				
65	221	220	221	221	220	219	217	216	216	216	215	215	217	214	214				
70	168	167	167	167	166	166	164	163	162	161	161	162	160	160	161				
75	115	115	114	114	114	113	112	111	111	110	109	108	109	108	108				
80	7.54	13.2	20.2	28.2	36.8	45.9	54.9	61.1	60.9	60.3	59.7	59.4	58.8	58.5	59.2				
85	0.00	0.00	0.00	0.00	0.00	0.00	0.00	0.00	0.00	0.00	8.78	13.3	13.3	14.8	14.8				
90	0.00	0.00	0.00	0.00	0.00	0.00	0.00	0.00	0.00	0.00	0.00	0.00	0.00	0.00	0.00				

H(β) Range:-90 - 90DEG
H(β) Interval: 1.0DEG
Test Speed: HIGH
Temperature:25.3DEG
Operators:
Test Date:24 Aug 2023

V(B) Range:-75 - 75DEG
V(B) Interval: 5.0DEG
Test System:EVERFINE GO-2000A_V1 SYSTEM V2.0.366
Humidity:65.0%
Test Distance:7.500m [K=1.0667]
Remarks: TÜV RHEINLAND