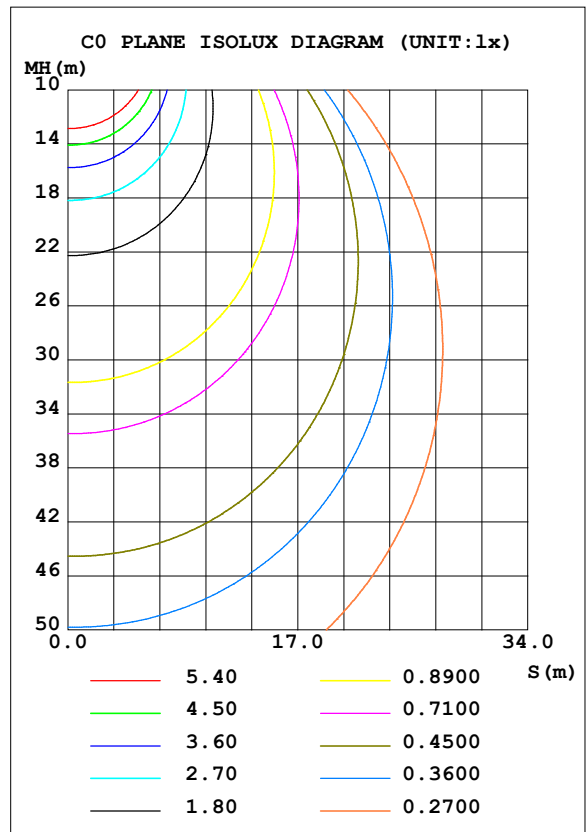
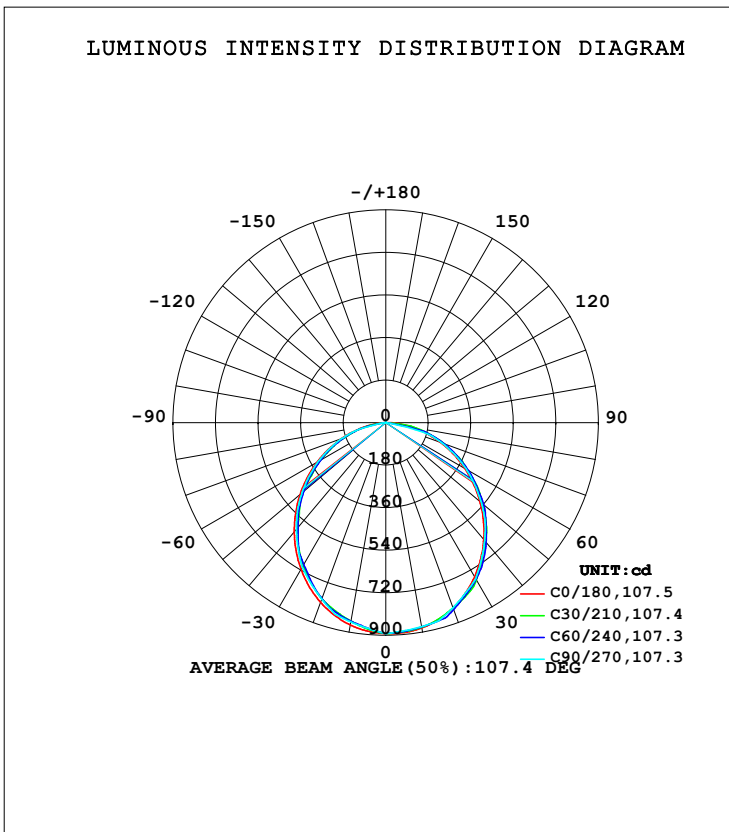


**LUMINAIRE PHOTOMETRIC TEST REPORT**

Test:U:219.51V I:0.0909A P:19.143W PF:0.9623 Freq:49.99Hz Lamp Flux:2383.38x1 lm		
NAME: GLM-DOR320D-20W(4000K)	TYPE:LED	WEIGHT:
SPEC.:	DIM.:	SERIAL No.:1
MFR.: EVERFINE	SUR.:	Shielding Angle:

DATA OF LAMP		PHOTOMETRIC DATA Eff: 124.50 lm/W			
MODEL		I <sub>max</sub> (cd)	893.1	S/MH (C0/180)	1.20
NOMINAL POWER (W)		LOR (%)	100.0	S/MH (C90/270)	1.19
RATED VOLTAGE (V)	220.0	TOTAL FLUX (lm)	2383.4	η UP, DN (C0-180)	0.0, 52.1
NOMINAL FLUX (lm)	2383.38	CIE CLASS	DIRECT	η UP, DN (C180-360)	0.0, 47.9
LAMPS INSIDE	1	η up (%)	0.0	CIBSE SHR NOM	1.25
TEST VOLTAGE (V)	220	η down (%)	100.0	CIBSE SHR MAX	1.35



H(β) Range: -90 - 90DEG  
 H(β) Interval: 1.0DEG  
 Test Speed: HIGH  
 Temperature: 25.3DEG  
 Operators:  
 Test Date: 23 Aug 2023

V(B) Range: -75 - 75DEG  
 V(B) Interval: 5.0DEG  
 Test System: EVERFINE GO-2000A\_V1 SYSTEM V2.0.366  
 Humidity: 65.0%  
 Test Distance: 7.500m [K=1.1600]  
 Remarks: TÜV RHEINLAND

**ZONAL FLUX DIAGRAM**

ZONAL FLUX DIAGRAM:

$\gamma$	C0	C45	C90	C135	C180	C225	C270	C315	$\gamma$	$\Phi$ zone	$\Phi$ total	%lum, lamp
10	881.8	877.9	876.5	866.3	869.0	851.9	856.0	863.4	0- 10	83.69	83.69	3.51,3.51
20	834.1	846.8	833.2	820.7	808.5	792.8	794.3	818.1	10- 20	238.7	322.4	13.5,13.5
30	752.6	761.3	762.6	730.8	717.0	693.8	707.5	722.7	20- 30	357.1	679.5	28.5,28.5
40	645.2	662.4	651.4	629.5	602.7	585.3	588.8	616.1	30- 40	423.7	1103	46.3,46.3
50	520.2	533.9	528.5	500.4	473.3	454.3	462.9	485.8	40- 50	431.0	1534	64.4,64.4
60	385.0	400.8	393.9	364.5	337.0	320.1	329.7	353.6	50- 60	382.3	1917	80.4,80.4
70	247.4	265.2	253.6	225.6	200.8	186.3	197.6	221.8	60- 70	288.8	2205	92.5,92.5
80	115.4	111.4	0	82.22	74.08	56.31	0	81.69	70- 80	159.9	2365	99.2,99.2
90	0	0	0	0	0	0	0	0	80- 90	18.17	2383	100,100
100									90-100			
110									100-110			
120									110-120			
130									120-130			
140									130-140			
150									140-150			
160									150-160			
170									160-170			
180									170-180			
DEG	LUMINOUS INTENSITY:cd									UNIT:lm		

Conical surface Flux(90deg): 1321.3 lm

%lum = 55.4%

%lamp = 55.4%

Conical surface Flux(120deg): 1916.5 lm

%lum = 80.4%

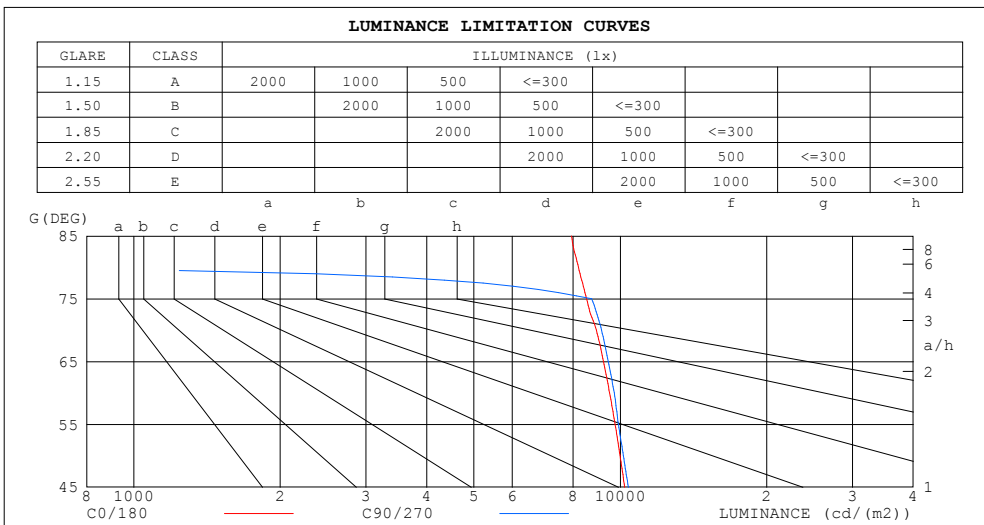
%lamp = 80.4%

H( $\beta$ ) Range:-90 - 90DEG  
H( $\beta$ ) Interval: 1.0DEG  
Test Speed: HIGH  
Temperature:25.3DEG  
Operators:  
Test Date:23 Aug 2023

V(B) Range:-75 - 75DEG  
V(B) Interval: 5.0DEG  
Test System:EVERFINE GO-2000A\_V1 SYSTEM V2.0.366  
Humidity:65.0%  
Test Distance:7.500m [K=1.1600]  
Remarks: TÜV RHEINLAND

**LUMINANCE LIMITATION CURVES**

Test:U:219.51V I:0.0909A P:19.143W PF:0.9623 Freq:49.99Hz Lamp Flux:2383.38x1 lm		
NAME: GLM-DOR320D-20W(4000K)	TYPE:LED	WEIGHT:
SPEC.:	DIM.:	SERIAL No.:1
MFR.: EVERFINE	SUR.:	Shielding Angle:



LUMINANCE cd/(m2)		
G (DEG)	C0/180	C90/270
85	7936	0
80	8206	0
75	8522	8732
70	8932	9154
65	9232	9441
60	9506	9725
55	9758	9912
50	9991	10150
45	10205	10389

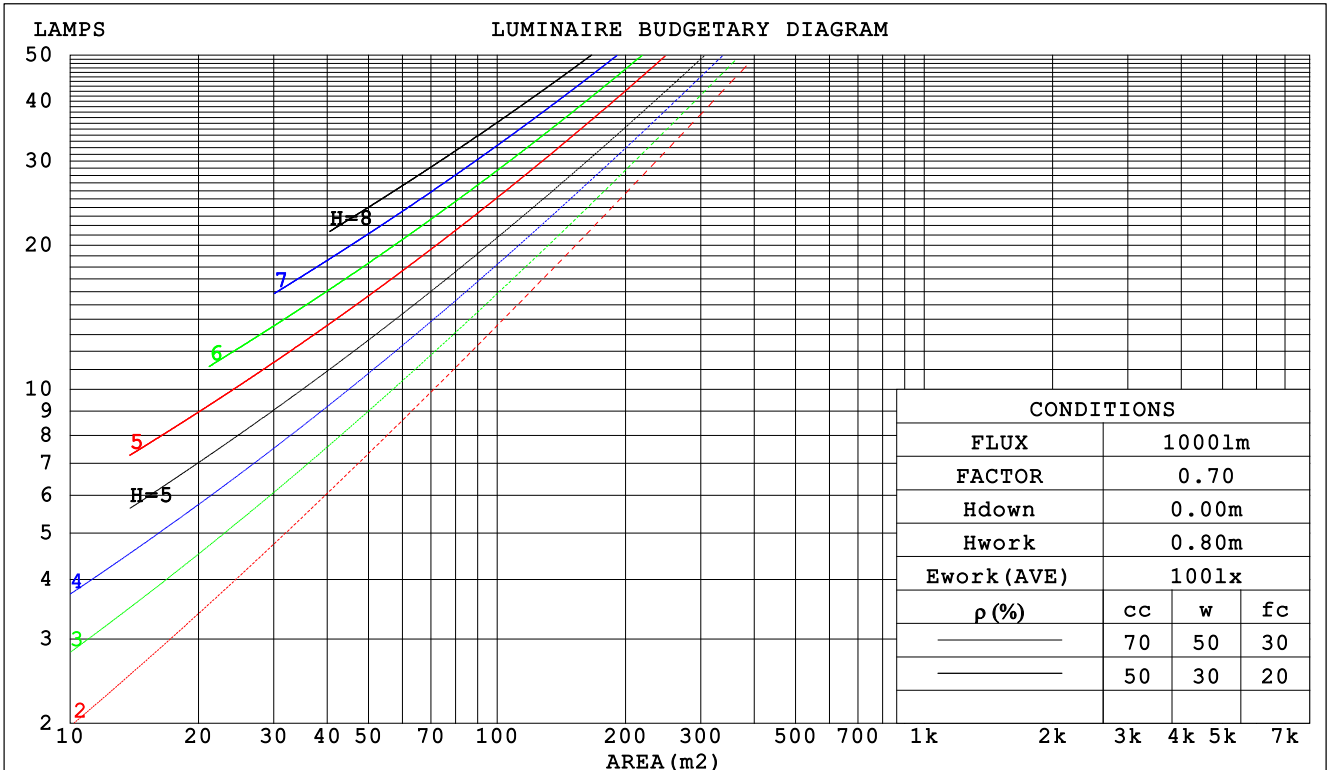
H( $\beta$ ) Range:-90 - 90DEG  
H( $\beta$ ) Interval: 1.0DEG  
Test Speed: HIGH  
Temperature:25.3DEG  
Operators:  
Test Date:23 Aug 2023

V(B) Range:-75 - 75DEG  
V(B) Interval: 5.0DEG  
Test System:EVERFINE GO-2000A\_V1 SYSTEM V2.0.366  
Humidity:65.0%  
Test Distance:7.500m [K=1.1600]  
Remarks: TÜV RHEINLAND

**CU AND LUMINAIRE BUDGETARY ESTIMATE DIAGRAM**

Test:U:219.51V I:0.0909A P:19.143W PF:0.9623 Freq:49.99Hz Lamp Flux:2383.38x1 lm		
NAME: GLM-DOR320D-20W(4000K)	TYPE:LED	WEIGHT:
SPEC.:	DIM.:	SERIAL No.:1
MFR.: EVERFINE	SUR.:	Shielding Angle:

$\rho_{cc}$	80%			70%			50%			30%			10%			0
$\rho_w$	50%	30%	10%	50%	30%	10%	50%	30%	10%	50%	30%	10%	50%	30%	10%	0
$\rho_{fc}$	20%			20%			20%			20%			20%			0
RCR	RCR:Room Cavity Ratio															
	Coefficients of Utilization(CU)															
0.0	1.19	1.19	1.19	1.16	1.16	1.16	1.11	1.11	1.11	1.06	1.06	1.06	1.02	1.02	1.02	1.00
1.0	1.05	1.01	.97	1.02	.99	.95	.98	.95	.92	.94	.92	.89	.91	.89	.87	.85
2.0	.91	.85	.79	.89	.83	.78	.86	.81	.76	.83	.78	.75	.80	.76	.73	.71
3.0	.80	.72	.66	.79	.71	.65	.76	.69	.64	.73	.68	.63	.70	.66	.62	.60
4.0	.71	.63	.56	.70	.62	.55	.67	.60	.55	.65	.59	.54	.63	.58	.53	.51
5.0	.64	.55	.48	.63	.54	.48	.60	.53	.47	.58	.52	.47	.57	.51	.46	.44
6.0	.57	.48	.42	.56	.48	.42	.55	.47	.42	.53	.46	.41	.51	.45	.41	.39
7.0	.52	.43	.37	.51	.43	.37	.50	.42	.37	.48	.42	.37	.47	.41	.36	.34
8.0	.48	.39	.33	.47	.39	.33	.45	.38	.33	.44	.38	.33	.43	.37	.33	.31
9.0	.44	.35	.30	.43	.35	.30	.42	.35	.30	.41	.34	.30	.40	.34	.29	.28
10.0	.40	.32	.27	.40	.32	.27	.39	.32	.27	.38	.31	.27	.37	.31	.27	.25



H( $\beta$ ) Range:-90 - 90DEG  
H( $\beta$ ) Interval: 1.0DEG  
Test Speed: HIGH  
Temperature:25.3DEG  
Operators:  
Test Date:23 Aug 2023

V(B) Range:-75 - 75DEG  
V(B) Interval: 5.0DEG  
Test System:EVERFINE GO-2000A\_V1 SYSTEM V2.0.366  
Humidity:65.0%  
Test Distance:7.500m [K=1.1600]  
Remarks: TÜV RHEINLAND

WEC AND CCEC

Test:U:219.51V I:0.0909A P:19.143W PF:0.9623 Freq:49.99Hz Lamp Flux:2383.38x1 lm		
NAME: GLM-DOR320D-20W(4000K)	TYPE:LED	WEIGHT:
SPEC.:	DIM.:	SERIAL No.:1
MFR.: EVERFINE	SUR.:	Shielding Angle:

ρcc	80%			70%			50%			30%			10%			0
ρw	50%	30%	10%	50%	30%	10%	50%	30%	10%	50%	30%	10%	50%	30%	10%	0
ρfc	20%			20%			20%			20%			20%			0
RCR	RCR:Room Cavity Ratio						Wall Exitance Coefficients (WEC)									
0.0																
1.0	.295	.168	.053	.288	.164	.052	.275	.158	.050	.263	.152	.049	.252	.146	.047	
2.0	.283	.155	.048	.277	.152	.047	.265	.147	.046	.254	.143	.045	.245	.138	.044	
3.0	.264	.140	.042	.258	.138	.042	.248	.134	.041	.239	.131	.040	.230	.127	.039	
4.0	.245	.127	.037	.240	.125	.037	.231	.122	.037	.222	.119	.036	.214	.116	.035	
5.0	.227	.116	.033	.222	.114	.033	.214	.112	.033	.207	.109	.032	.200	.107	.032	
6.0	.211	.106	.030	.207	.105	.030	.200	.102	.030	.193	.100	.029	.187	.098	.029	
7.0	.196	.097	.028	.193	.096	.027	.187	.094	.027	.181	.093	.027	.175	.091	.027	
8.0	.184	.090	.025	.181	.089	.025	.175	.087	.025	.169	.086	.025	.164	.084	.025	
9.0	.172	.083	.023	.170	.083	.023	.164	.081	.023	.160	.080	.023	.155	.079	.023	
10.0	.162	.078	.022	.160	.077	.022	.155	.076	.021	.151	.075	.021	.146	.074	.021	

ρcc	80%			70%			50%			30%			10%			0
ρw	50%	30%	10%	50%	30%	10%	50%	30%	10%	50%	30%	10%	50%	30%	10%	0
ρfc	20%			20%			20%			20%			20%			0
RCR	RCR:Room Cavity Ratio						Ceiling Cavity Exitance Coefficients (CCEC)									
0.0	.190	.190	.190	.163	.163	.163	.111	.111	.111	.064	.064	.064	.020	.020	.020	
1.0	.179	.156	.136	.153	.134	.117	.105	.092	.081	.060	.053	.047	.019	.017	.015	
2.0	.171	.132	.099	.147	.114	.086	.100	.079	.060	.058	.046	.035	.019	.015	.011	
3.0	.163	.114	.075	.140	.099	.065	.096	.068	.046	.056	.040	.027	.018	.013	.009	
4.0	.156	.101	.059	.134	.087	.051	.092	.061	.036	.053	.036	.021	.017	.012	.007	
5.0	.148	.090	.048	.127	.078	.041	.088	.055	.029	.051	.032	.017	.016	.010	.006	
6.0	.141	.082	.040	.121	.071	.034	.084	.050	.024	.049	.029	.014	.016	.010	.005	
7.0	.135	.075	.034	.116	.065	.029	.080	.046	.021	.046	.027	.012	.015	.009	.004	
8.0	.128	.069	.029	.110	.060	.025	.076	.042	.018	.044	.025	.011	.014	.008	.004	
9.0	.122	.064	.025	.105	.056	.022	.073	.039	.016	.042	.023	.009	.014	.008	.003	
10.0	.116	.060	.023	.100	.052	.020	.070	.037	.014	.041	.022	.008	.013	.007	.003	

H(β) Range:-90 - 90DEG  
H(β) Interval: 1.0DEG  
Test Speed: HIGH  
Temperature:25.3DEG  
Operators:  
Test Date:23 Aug 2023

V(B) Range:-75 - 75DEG  
V(B) Interval: 5.0DEG  
Test System:EVERFINE GO-2000A\_V1 SYSTEM V2.0.366  
Humidity:65.0%  
Test Distance:7.500m [K=1.1600]  
Remarks: TÜV RHEINLAND

**UGR(Unified Glare Rating) Table**

Test:U:219.51V I:0.0909A P:19.143W PF:0.9623 Freq:49.99Hz Lamp Flux:2383.38x1 lm										
NAME: GLM-DOR320D-20W(4000K)					TYPE:LED			WEIGHT:		
SPEC.:					DIM.:			SERIAL No.:1		
MFR.: EVERFINE					SUR.:			Shielding Angle:		
ceiling/cavity	0.7	0.7	0.5	0.5	0.3	0.7	0.7	0.5	0.5	0.3
walls	0.5	0.3	0.5	0.3	0.3	0.5	0.3	0.5	0.3	0.3
working plane	0.2	0.2	0.2	0.2	0.2	0.2	0.2	0.2	0.2	0.2
Room dimensions	Viewed crosswise					Viewed endwise				
x = 2H y = 2H	21.2	22.6	21.4	22.8	23.1	21.2	22.7	21.5	22.9	23.1
3H	22.8	24.2	23.1	24.4	24.6	22.8	24.2	23.1	24.4	24.7
4H	23.5	24.8	23.8	25.0	25.3	23.5	24.8	23.8	25.0	25.3
6H	24.0	25.2	24.3	25.5	25.8	23.6	24.8	23.9	25.1	25.3
8H	24.2	25.4	24.6	25.7	26.0	23.5	24.7	23.8	25.0	25.3
12H	24.4	25.5	24.7	25.8	26.1	23.4	24.6	23.8	24.9	25.2
4H 2H	21.8	23.1	22.1	23.4	23.6	21.9	23.2	22.2	23.4	23.7
3H	23.6	24.8	24.0	25.1	25.4	23.7	24.8	24.0	25.1	25.4
4H	24.5	25.5	24.9	25.8	26.2	24.5	25.5	24.9	25.9	26.2
6H	25.2	26.1	25.6	26.5	26.8	24.6	25.5	25.0	25.9	26.3
8H	25.5	26.3	25.9	26.7	27.1	24.6	25.4	25.0	25.8	26.2
12H	25.7	26.5	26.1	26.8	27.3	24.5	25.3	24.9	25.7	26.1
8H 4H	24.8	25.7	25.2	26.1	26.4	24.8	25.7	25.2	26.1	26.4
6H	25.7	26.4	26.2	26.8	27.3	25.0	25.7	25.4	26.1	26.6
8H	26.1	26.7	26.6	27.2	27.6	25.0	25.6	25.4	26.0	26.5
12H	26.4	27.0	26.9	27.4	27.9	24.9	25.5	25.4	25.9	26.4
12H 4H	24.8	25.6	25.2	26.0	26.4	24.9	25.6	25.3	26.0	26.4
6H	25.7	26.3	26.2	26.8	27.2	25.1	25.7	25.5	26.1	26.6
8H	26.1	26.7	26.6	27.1	27.6	25.0	25.6	25.5	26.0	26.5
Variations with the observer position at spacings:										
S = 1.0H	+ 0.2 / - 0.2					+ 0.2 / - 0.2				
1.5H	+ 0.3 / - 0.4					+ 0.1 / - 0.3				
2.0H	+ 0.2 / - 0.4					+ 0.2 / - 0.5				

CIE Pub.117, 2383 lm Total Lamp Luminous Flux Corrected (8log(F/F0) = 3.0)

H(β) Range:-90 - 90DEG	V(B) Range:-75 - 75DEG
H(β) Interval: 1.0DEG	V(B) Interval: 5.0DEG
Test Speed: HIGH	Test System:EVERFINE GO-2000A_V1 SYSTEM V2.0.366
Temperature:25.3DEG	Humidity:65.0%
Operators:	Test Distance:7.500m [K=1.1600]
Test Date:23 Aug 2023	Remarks: TÜV RHEINLAND

**UTILIZATION FACTORS TABLE**

Test:U:219.51V I:0.0909A P:19.143W PF:0.9623 Freq:49.99Hz Lamp Flux:2383.38x1 lm		
NAME: GLM-DOR320D-20W(4000K)	TYPE:LED	WEIGHT:
SPEC.:	DIM.:	SERIAL No.:1
MFR.: EVERFINE	SUR.:	Shielding Angle:

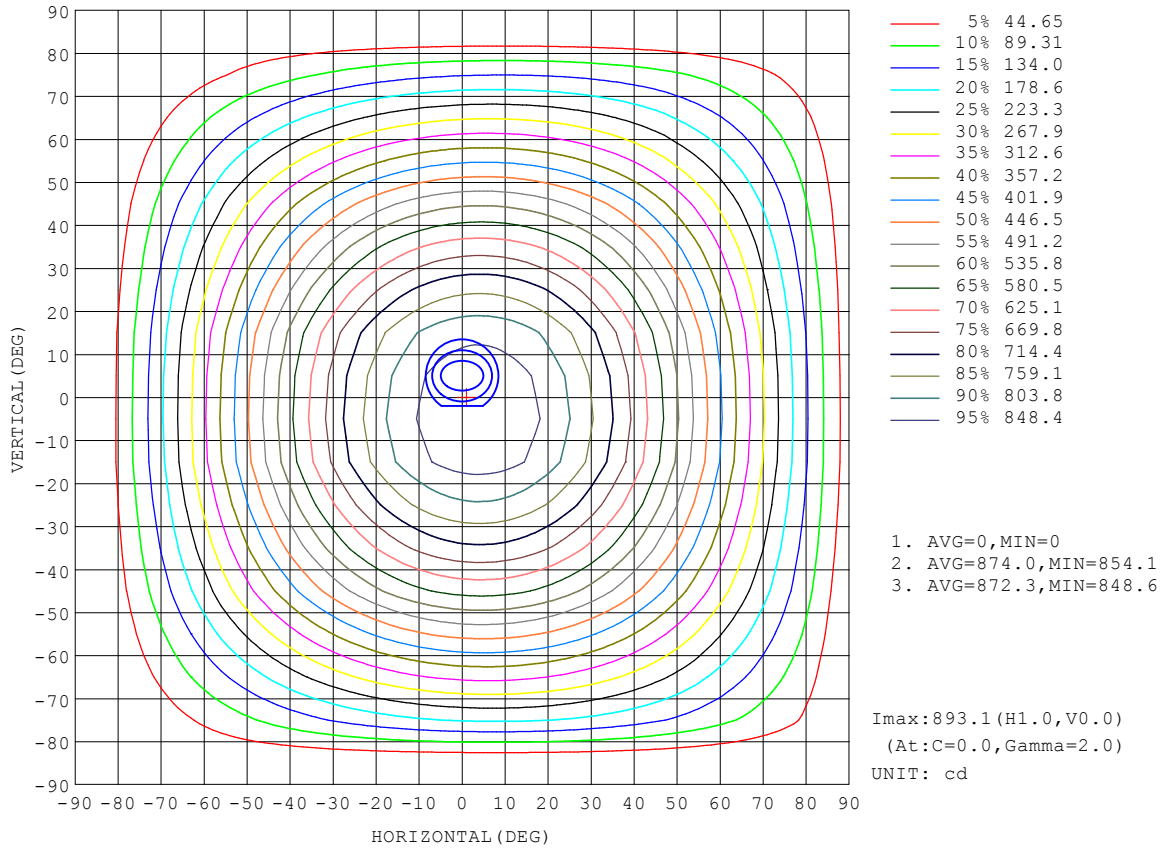
REFLECTANCE										
Ceiling	0.8	0.8	0.8	0.7	0.7	0.7	0.5	0.5	0.5	0
Walls	0.7	0.5	0.3	0.7	0.5	0.3	0.7	0.5	0.3	0
Working plane	0.2	0.2	0.2	0.2	0.2	0.2	0.2	0.2	0.2	0
ROOM INDEX	UTILIZATION FACTORS (PERCENT) k(RI) x RCR = 5									
k = 0.60	58	47	40	58	47	40	57	46	40	34
0.80	69	57	50	68	57	50	66	56	49	43
1.00	77	66	59	76	65	59	74	67	58	51
1.25	84	74	67	83	73	66	80	72	66	58
1.50	89	79	73	87	78	72	84	77	71	64
2.00	96	88	81	94	86	80	91	84	79	71
2.50	100	92	86	98	91	85	94	88	84	75
3.00	103	96	91	101	95	90	97	92	88	79
4.00	107	101	97	105	100	96	100	96	93	84
5.00	109	105	101	107	103	99	102	99	96	87
ROOM INDEX	UF(total)									Direct
According to DIN EN 13032-2 2004			Suspended				SHRNO = 1.25			

H(β) Range:-90 - 90DEG  
H(β) Interval: 1.0DEG  
Test Speed: HIGH  
Temperature:25.3DEG  
Operators:  
Test Date:23 Aug 2023

V(B) Range:-75 - 75DEG  
V(B) Interval: 5.0DEG  
Test System:EVERFINE GO-2000A\_V1 SYSTEM V2.0.366  
Humidity:65.0%  
Test Distance:7.500m [K=1.1600]  
Remarks: TÜV RHEINLAND

ISOCANDELA DIAGRAM

Test:U:219.51V I:0.0909A P:19.143W PF:0.9623 Freq:49.99Hz Lamp Flux:2383.38x1 lm		
NAME: GLM-DOR320D-20W(4000K)	TYPE:LED	WEIGHT:
SPEC.:	DIM.:	SERIAL No.:1
MFR.: EVERFINE	SUR.:	Shielding Angle:



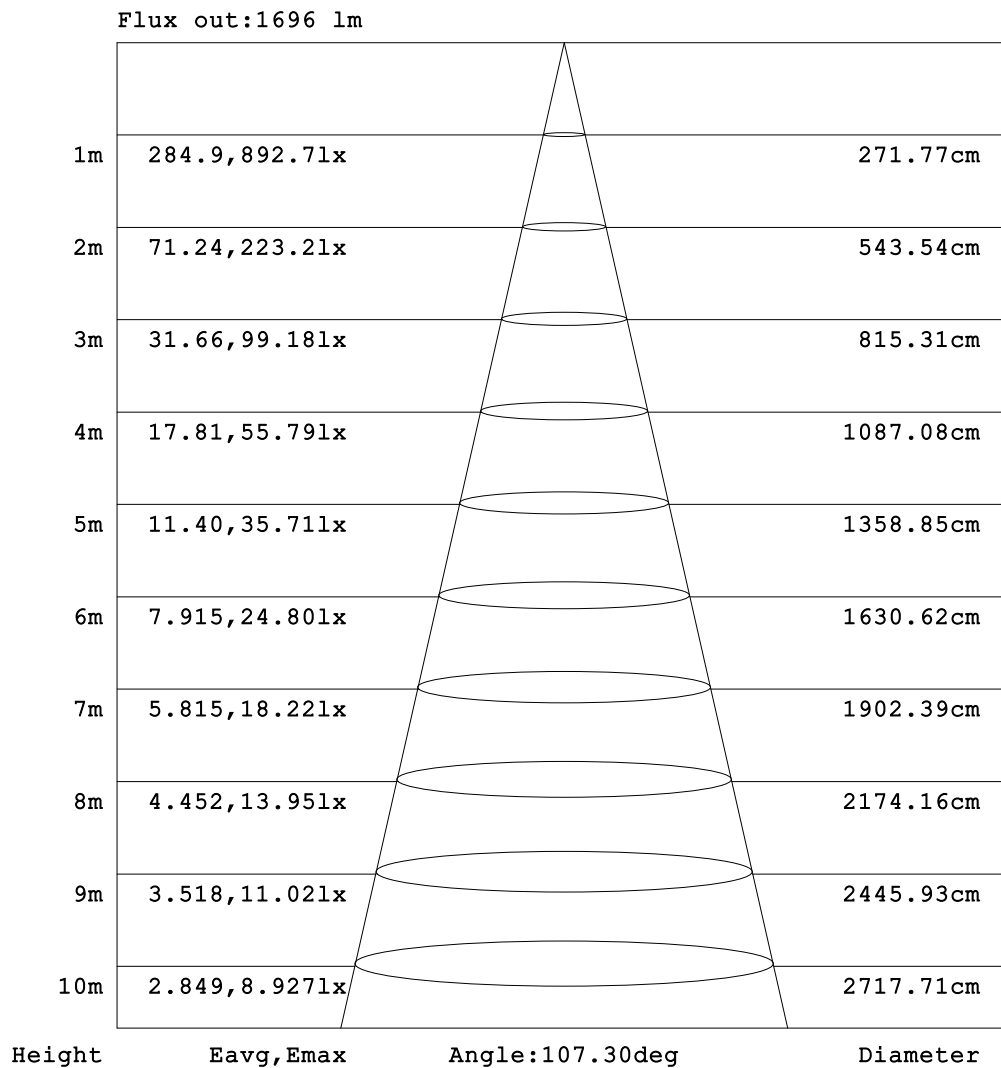
H( $\beta$ ) Range:-90 - 90DEG  
 H( $\beta$ ) Interval: 1.0DEG  
 Test Speed: HIGH  
 Temperature:25.3DEG  
 Operators:  
 Test Date:23 Aug 2023

V(B) Range:-75 - 75DEG  
 V(B) Interval: 5.0DEG  
 Test System:EVERFINE GO-2000A\_V1 SYSTEM V2.0.366  
 Humidity:65.0%  
 Test Distance:7.500m [K=1.1600]  
 Remarks: TÜV RHEINLAND



**AAI Figure**

Test:U:219.51V I:0.0909A P:19.143W PF:0.9623 Freq:49.99Hz Lamp Flux:2383.38x1 lm		
NAME: GLM-DOR320D-20W(4000K)	TYPE:LED	WEIGHT:
SPEC.:	DIM.:	SERIAL No.:1
MFR.: EVERFINE	SUR.:	Shielding Angle:



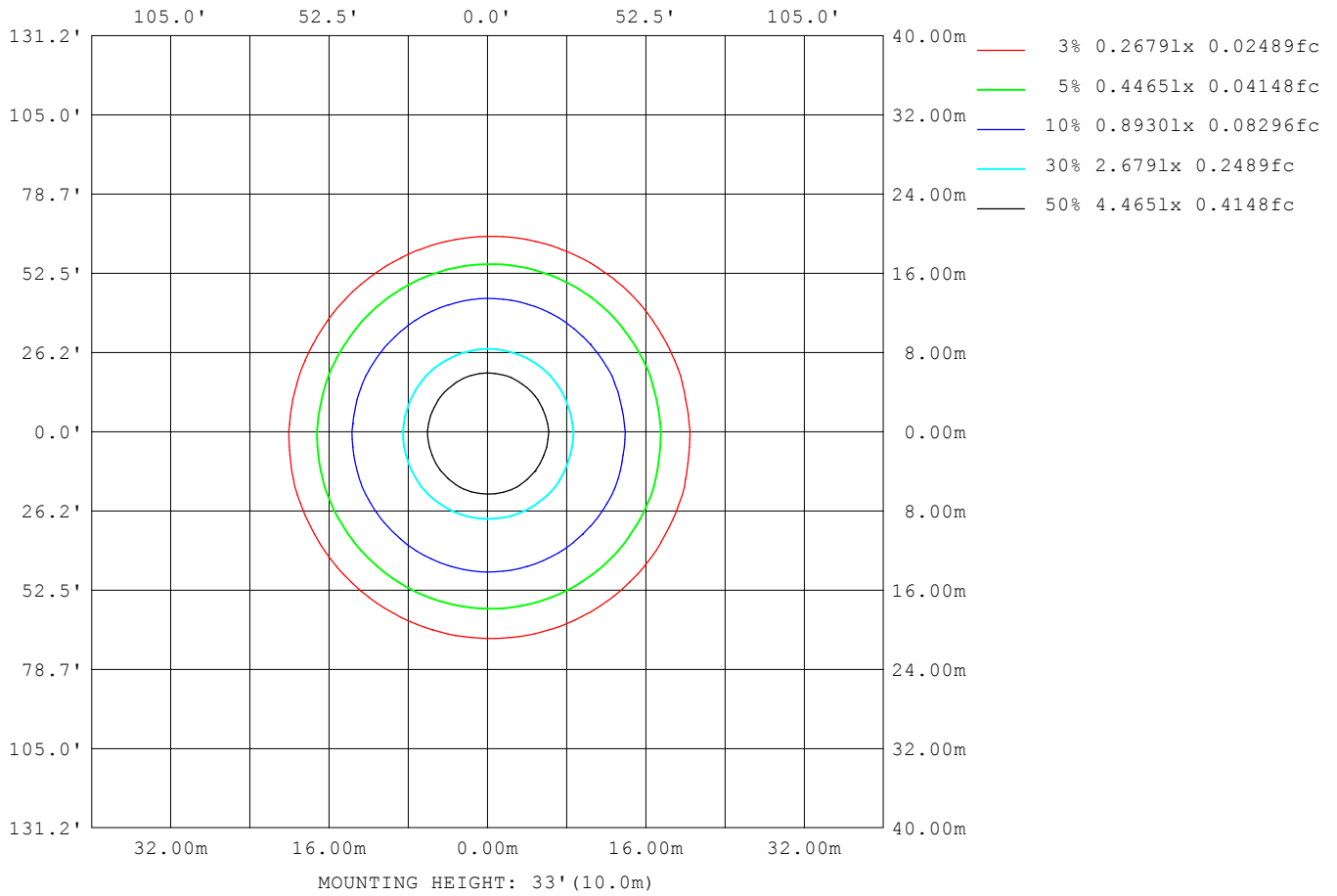
Note:The Curves indicate the illuminated area and the average illumination when the luminaire is at different distance.

H(β) Range:-90 - 90DEG  
H(β) Interval: 1.0DEG  
Test Speed: HIGH  
Temperature:25.3DEG  
Operators:  
Test Date:23 Aug 2023

V(B) Range:-75 - 75DEG  
V(B) Interval: 5.0DEG  
Test System:EVERFINE GO-2000A\_V1 SYSTEM V2.0.366  
Humidity:65.0%  
Test Distance:7.500m [K=1.1600]  
Remarks: TÜV RHEINLAND

**ISOLUX DIAGRAM**

Test:U:219.51V I:0.0909A P:19.143W PF:0.9623 Freq:49.99Hz Lamp Flux:2383.38x1 lm		
NAME: GLM-DOR320D-20W(4000K)	TYPE:LED	WEIGHT:
SPEC.:	DIM.:	SERIAL No.:1
MFR.: EVERFINE	SUR.:	Shielding Angle:



H( $\beta$ ) Range:-90 - 90DEG  
 H( $\beta$ ) Interval: 1.0DEG  
 Test Speed: HIGH  
 Temperature:25.3DEG  
 Operators:  
 Test Date:23 Aug 2023

V(B) Range:-75 - 75DEG  
 V(B) Interval: 5.0DEG  
 Test System:EVERFINE GO-2000A\_V1 SYSTEM V2.0.366  
 Humidity:65.0%  
 Test Distance:7.500m [K=1.1600]  
 Remarks: TÜV RHEINLAND

**LED Avg.L Report**

Test:U:219.51V I:0.0909A P:19.143W PF:0.9623 Freq:49.99Hz Lamp Flux:2383.38x1 lm		
NAME: GLM-DOR320D-20W(4000K)	TYPE:LED	WEIGHT:
SPEC.:	DIM.:	SERIAL No.:1
MFR.: EVERFINE	SUR.:	Shielding Angle:

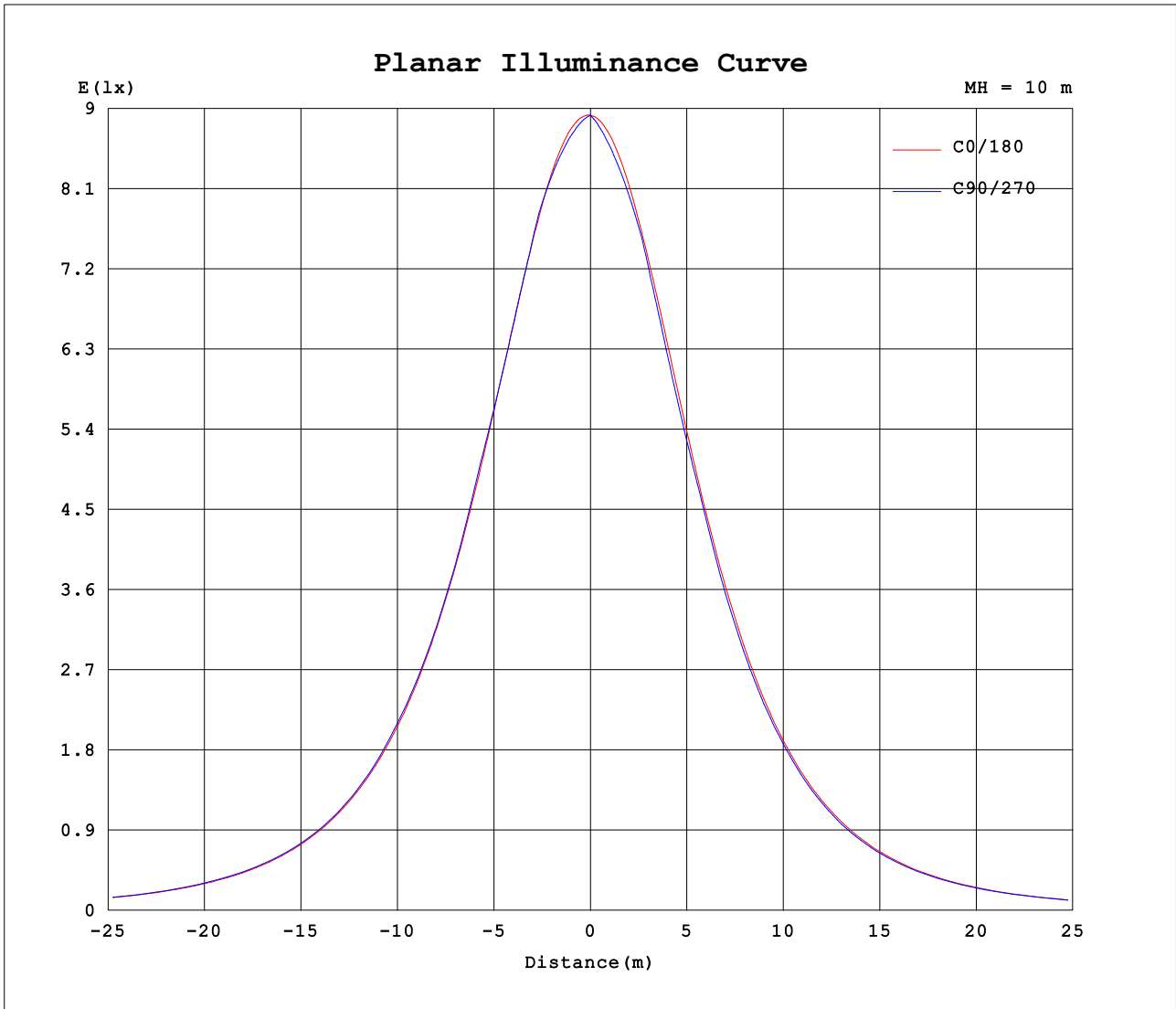
AvgL	cd/m2
L_0~180 (65) av	8536
L_0~180 (75) av	7508
L_0~180 (85) av	5189
L_90~270 (65) av	8565
L_90~270 (75) av	7494
L_90~270 (85) av	0
L_45 (65) av	8515
L_45 (75) av	7582
L_45 (85) av	0

Standard: GB/T 29293-2012

H( $\beta$ ) Range:-90 - 90DEG  
H( $\beta$ ) Interval: 1.0DEG  
Test Speed: HIGH  
Temperature:25.3DEG  
Operators:  
Test Date:23 Aug 2023

V(B) Range:-75 - 75DEG  
V(B) Interval: 5.0DEG  
Test System:EVERFINE GO-2000A\_V1 SYSTEM V2.0.366  
Humidity:65.0%  
Test Distance:7.500m [K=1.1600]  
Remarks: TÜV RHEINLAND

**Planar Illuminance Curve**



H( $\beta$ ) Range:-90 - 90DEG  
H( $\beta$ ) Interval: 1.0DEG  
Test Speed: HIGH  
Temperature:25.3DEG  
Operators:  
Test Date:23 Aug 2023

V(B) Range:-75 - 75DEG  
V(B) Interval: 5.0DEG  
Test System:EVERFINE GO-2000A\_V1 SYSTEM V2.0.366  
Humidity:65.0%  
Test Distance:7.500m [K=1.1600]  
Remarks: TüV RHEINLAND

LUMINOUS DISTRIBUTION INTENSITY DATA

Test:U:219.51V I:0.0909A P:19.143W PF:0.9623 Freq:49.99Hz Lamp Flux:2383.38x1 lm		
NAME: GLM-DOR320D-20W(4000K)	TYPE:LED	WEIGHT:
SPEC.:	DIM.:	SERIAL No.:1
MFR.: EVERFINE	SUR.:	Shielding Angle:

Table--1

UNIT: cd

C (DEG) γ (DEG)	0	5	10	15	20	25	30	35	40	45	50	55	60	65	70	75	80	85	90
0	893	893	893	893	893	893	893	893	893	893	893	893	893	893	893	893	893	893	893
5	891	891	890	890	889	889	888	888	887	887	887	886	886	886	885	885	885	884	884
10	882	881	880	880	879	879	879	879	878	878	878	878	878	877	877	877	877	877	877
15	863	862	862	862	862	861	861	861	861	863	864	866	867	868	869	869	869	869	868
20	834	834	835	835	834	833	834	838	843	847	847	844	841	839	838	836	835	834	833
25	797	798	800	798	797	800	807	814	809	806	803	803	803	803	802	802	800	799	797
30	753	755	757	753	756	766	768	762	759	761	764	765	765	765	765	765	765	764	763
35	702	706	705	702	714	716	709	711	716	717	717	719	718	717	715	713	711	709	706
40	645	652	647	653	661	652	657	662	661	662	663	663	661	659	657	656	654	653	651
45	585	594	584	601	592	596	601	600	602	604	601	598	599	600	601	601	599	597	595
50	520	528	525	532	530	536	536	540	537	534	538	542	541	538	536	534	532	530	528
55	453	459	467	457	470	468	473	467	472	477	473	470	469	470	469	468	466	463	461
60	385	387	397	399	397	402	398	408	403	401	403	405	403	402	401	399	398	396	394
65	316	317	319	326	332	330	334	330	335	335	334	333	333	333	332	330	328	326	323
70	247	258	262	264	262	258	264	264	263	265	266	265	264	262	261	259	258	256	254
75	179	186	190	195	191	193	193	198	196	195	195	194	194	193	191	190	188	185	183
80	115	127	130	129	127	128	127	129	130	111	88.8	68.4	50.5	35.2	22.5	12.6	5.58	1.38	0.00
85	56.0	65.4	63.7	63.4	60.4	28.5	0.00	0.00	0.00	0.00	0.00	0.00	0.00	0.00	0.00	0.00	0.00	0.00	0.00
90	0.00	0.00	0.00	0.00	0.00	0.00	0.00	0.00	0.00	0.00	0.00	0.00	0.00	0.00	0.00	0.00	0.00	0.00	0.00

H(β) Range:-90 - 90DEG  
 H(β) Interval: 1.0DEG  
 Test Speed: HIGH  
 Temperature:25.3DEG  
 Operators:  
 Test Date:23 Aug 2023

V(B) Range:-75 - 75DEG  
 V(B) Interval: 5.0DEG  
 Test System:EVERFINE GO-2000A\_V1 SYSTEM V2.0.366  
 Humidity:65.0%  
 Test Distance:7.500m [K=1.1600]  
 Remarks: TÜV RHEINLAND

LUMINOUS DISTRIBUTION INTENSITY DATA

Test:U:219.51V I:0.0909A P:19.143W PF:0.9623 Freq:49.99Hz Lamp Flux:2383.38x1 lm		
NAME: GLM-DOR320D-20W(4000K)	TYPE:LED	WEIGHT:
SPEC.:	DIM.:	SERIAL No.:1
MFR.: EVERFINE	SUR.:	Shielding Angle:

Table--2

UNIT: cd

C (DEG) γ (DEG)	95	100	105	110	115	120	125	130	135	140	145	150	155	160	165	170	175	180	185
0	893	893	893	893	893	893	893	893	893	893	893	893	893	893	893	893	893	893	893
5	883	883	883	882	882	882	881	881	881	881	881	882	882	882	883	884	884	885	884
10	876	875	874	873	872	871	869	868	866	865	863	862	862	863	864	865	867	869	865
15	866	864	862	860	857	855	853	850	848	846	843	840	837	835	835	837	840	843	837
20	832	831	830	828	827	826	824	823	821	817	814	812	808	803	799	800	804	809	800
25	795	793	790	788	786	784	784	783	780	778	776	772	770	766	759	755	760	766	756
30	761	758	755	750	746	740	735	732	731	731	728	725	721	719	714	706	708	717	704
35	704	701	699	697	695	695	695	686	678	672	673	673	668	664	664	654	652	662	647
40	649	647	644	640	636	631	627	628	630	622	611	610	612	605	603	598	590	603	585
45	592	589	585	581	578	575	571	564	557	558	562	548	544	546	538	540	525	540	519
50	526	524	521	517	514	510	506	502	500	492	485	491	479	477	474	472	461	473	456
55	457	454	451	448	445	443	441	436	430	427	425	413	419	406	411	402	397	406	391
60	391	388	385	381	377	372	367	365	365	360	353	353	342	348	333	335	333	337	328
65	320	317	314	311	308	306	303	298	292	287	288	282	279	270	275	272	269	268	263
70	251	249	246	243	240	236	231	227	226	225	218	212	214	205	198	194	194	201	188
75	181	178	176	173	171	168	166	164	161	156	150	150	146	143	137	135	133	136	128
80	1.35	5.29	11.6	20.1	30.5	42.4	55.3	68.8	82.2	91.6	90.1	89.0	84.2	81.2	75.3	72.5	68.7	74.1	63.3
85	0.00	0.00	0.00	0.00	0.00	0.00	0.00	0.00	0.00	0.00	0.00	0.00	13.9	22.6	23.6	19.0	8.97	17.2	7.66
90	0.00	0.00	0.00	0.00	0.00	0.00	0.00	0.00	0.00	0.00	0.00	0.00	0.00	0.00	0.00	0.00	0.00	0.00	0.00

H(β) Range:-90 - 90DEG  
H(β) Interval: 1.0DEG  
Test Speed: HIGH  
Temperature:25.3DEG  
Operators:  
Test Date:23 Aug 2023

V(B) Range:-75 - 75DEG  
V(B) Interval: 5.0DEG  
Test System:EVERFINE GO-2000A\_V1 SYSTEM V2.0.366  
Humidity:65.0%  
Test Distance:7.500m [K=1.1600]  
Remarks: TÜV RHEINLAND

LUMINOUS DISTRIBUTION INTENSITY DATA

Test:U:219.51V I:0.0909A P:19.143W PF:0.9623 Freq:49.99Hz Lamp Flux:2383.38x1 lm		
NAME: GLM-DOR320D-20W(4000K)	TYPE:LED	WEIGHT:
SPEC.:	DIM.:	SERIAL No.:1
MFR.: EVERFINE	SUR.:	Shielding Angle:

Table--3

UNIT: cd

C (DEG) γ (DEG)	190	195	200	205	210	215	220	225	230	235	240	245	250	255	260	265	270	275	280
0	893	893	893	893	893	893	893	893	893	893	893	893	893	893	893	893	893	893	893
5	882	880	879	878	876	875	875	874	873	873	873	873	872	873	873	873	873	873	874
10	862	859	856	854	852	852	852	852	852	852	853	853	854	854	855	855	856	856	857
15	832	827	824	824	825	826	827	827	827	828	829	830	831	833	834	835	837	838	839
20	793	789	790	791	793	792	792	793	793	792	792	792	792	792	793	793	794	795	797
25	747	747	750	750	749	749	748	747	747	746	744	744	744	745	747	748	750	752	754
30	697	700	701	699	698	698	698	694	692	691	694	697	700	702	704	706	708	709	710
35	644	649	644	643	644	640	636	637	642	646	644	642	642	642	643	645	647	650	653
40	588	587	584	586	579	576	583	585	580	577	578	580	582	584	585	587	589	591	593
45	529	522	524	517	516	525	517	513	516	518	519	519	520	522	524	526	529	531	534
50	461	458	455	452	458	449	450	454	452	452	453	455	456	458	459	461	463	465	467
55	390	394	384	391	381	387	386	384	386	388	388	388	388	389	391	393	396	398	401
60	323	317	325	315	321	316	319	320	317	316	318	320	322	324	326	328	330	332	334
65	261	258	249	253	251	253	249	250	252	254	254	254	256	257	259	261	263	266	268
70	183	182	185	188	184	186	188	186	185	186	188	190	191	193	194	196	198	200	202
75	124	122	124	123	124	121	123	125	125	125	125	125	126	126	128	129	131	133	136
80	62.6	62.0	63.9	63.9	65.5	63.9	62.6	56.3	47.6	38.6	29.7	21.5	14.3	8.26	3.77	0.96	0.00	0.99	4.01
85	12.4	11.4	9.35	7.72	0.00	0.00	0.00	0.00	0.00	0.00	0.00	0.00	0.00	0.00	0.00	0.00	0.00	0.00	0.00
90	0.00	0.00	0.00	0.00	0.00	0.00	0.00	0.00	0.00	0.00	0.00	0.00	0.00	0.00	0.00	0.00	0.00	0.00	0.00

H(β) Range:-90 - 90DEG  
H(β) Interval: 1.0DEG  
Test Speed: HIGH  
Temperature:25.3DEG  
Operators:  
Test Date:23 Aug 2023

V(B) Range:-75 - 75DEG  
V(B) Interval: 5.0DEG  
Test System:EVERFINE GO-2000A\_V1 SYSTEM V2.0.366  
Humidity:65.0%  
Test Distance:7.500m [K=1.1600]  
Remarks: TÜV RHEINLAND

LUMINOUS DISTRIBUTION INTENSITY DATA

Test:U:219.51V I:0.0909A P:19.143W PF:0.9623 Freq:49.99Hz Lamp Flux:2383.38x1 lm		
NAME: GLM-DOR320D-20W(4000K)	TYPE:LED	WEIGHT:
SPEC.:	DIM.:	SERIAL No.:1
MFR.: EVERFINE	SUR.:	Shielding Angle:

Table--4

UNIT: cd

C (DEG) γ (DEG)	285	290	295	300	305	310	315	320	325	330	335	340	345	350	355				
0	893	893	893	893	893	893	893	893	893	893	893	893	893	893	893				
5	875	876	876	877	878	879	880	881	882	883	884	886	887	888	890				
10	857	858	859	860	861	862	863	865	867	869	871	872	874	877	879				
15	840	840	841	841	841	841	841	841	843	845	848	852	854	856	859				
20	799	801	804	807	811	816	818	817	815	814	816	820	825	828	830				
25	756	758	760	762	764	767	772	778	786	782	780	780	786	792	794				
30	712	713	715	717	720	722	723	724	730	740	742	737	739	747	750				
35	656	659	662	665	668	670	674	677	676	679	690	692	686	694	700				
40	595	598	601	606	610	613	616	619	624	624	624	638	635	635	646				
45	536	538	540	542	544	550	556	559	561	567	567	569	583	572	588				
50	470	473	477	482	485	486	486	492	500	500	506	506	513	513	522				
55	404	407	409	412	415	420	427	427	427	437	437	445	439	454	452				
60	337	339	343	346	350	352	354	359	367	363	372	372	380	384	381				
65	271	274	276	279	281	284	289	293	291	299	301	307	307	307	311				
70	204	207	210	213	217	220	222	223	226	231	231	238	245	249	251				
75	138	141	144	147	150	152	156	159	163	163	167	169	177	178	180				
80	9.10	16.3	25.5	36.7	49.9	64.9	81.7	96.3	98.4	99.9	104	107	112	117	119				
85	0.00	0.00	0.00	0.00	0.00	0.00	0.00	0.00	0.00	0.00	20.9	43.8	48.2	52.6	59.4				
90	0.00	0.00	0.00	0.00	0.00	0.00	0.00	0.00	0.00	0.00	0.00	0.00	0.00	0.00	0.00				

H(β) Range:-90 - 90DEG  
H(β) Interval: 1.0DEG  
Test Speed: HIGH  
Temperature:25.3DEG  
Operators:  
Test Date:23 Aug 2023

V(B) Range:-75 - 75DEG  
V(B) Interval: 5.0DEG  
Test System:EVERFINE GO-2000A\_V1 SYSTEM V2.0.366  
Humidity:65.0%  
Test Distance:7.500m [K=1.1600]  
Remarks: TÜV RHEINLAND