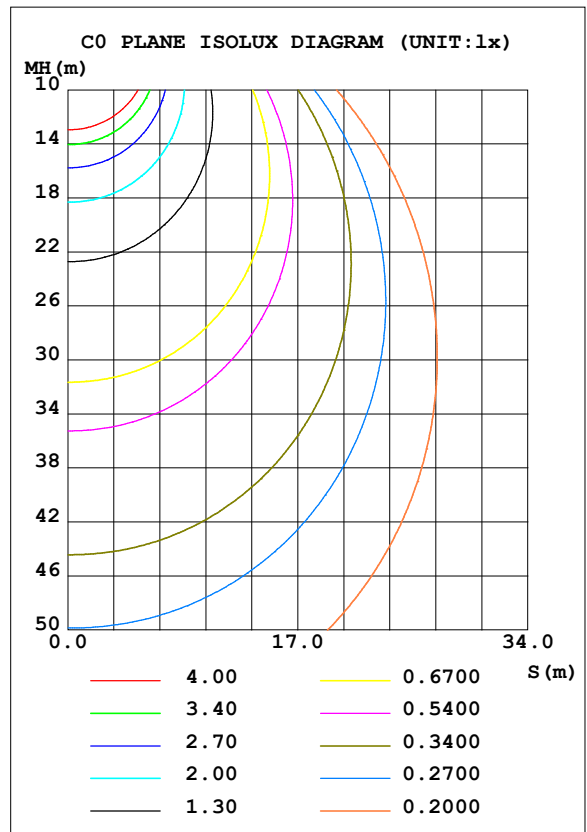
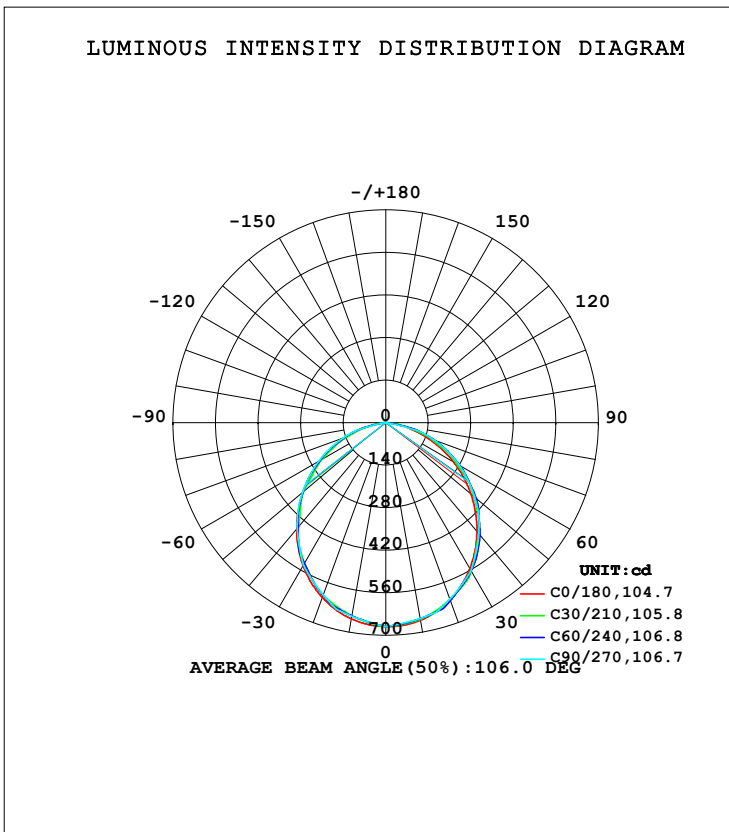


LUMINAIRE PHOTOMETRIC TEST REPORT

Test:U:219.21V I:0.0659A P:14.014W PF:0.9652 Freq:49.99Hz Lamp Flux:1741.21x1 lm		
NAME: GLM-DOR260D-15W(4000K)	TYPE:LED	WEIGHT:
SPEC.:	DIM.:	SERIAL No.:1
MFR.: EVERFINE	SUR.:	Shielding Angle:

DATA OF LAMP		PHOTOMETRIC DATA Eff: 124.24 lm/W			
MODEL		I _{max} (cd)	671.3	S/MH (C0/180)	1.21
NOMINAL POWER (W)		LOR (%)	100.0	S/MH (C90/270)	1.21
RATED VOLTAGE (V)	220.0	TOTAL FLUX (lm)	1741.2	η UP, DN (C0-180)	0.0, 51.1
NOMINAL FLUX (lm)	1741.21	CIE CLASS	DIRECT	η UP, DN (C180-360)	0.0, 48.9
LAMPS INSIDE	1	η up (%)	0.0	CIBSE SHR NOM	1.25
TEST VOLTAGE (V)	220	η down (%)	100.0	CIBSE SHR MAX	1.35



H(β) Range: -90 - 90DEG
 H(β) Interval: 1.0DEG
 Test Speed: HIGH
 Temperature: 25.3DEG
 Operators:
 Test Date: 24 Aug 2023

V(B) Range: -75 - 75DEG
 V(B) Interval: 5.0DEG
 Test System: EVERFINE GO-2000A_V1 SYSTEM V2.0.366
 Humidity: 65.0%
 Test Distance: 7.500m [K=1.0840]
 Remarks: TÜV RHEINLAND

ZONAL FLUX DIAGRAM

ZONAL FLUX DIAGRAM:

γ	C0	C45	C90	C135	C180	C225	C270	C315	γ	Φ zone	Φ total	%lum, lamp
10	660.2	655.3	654.3	650.1	655.4	644.9	646.9	650.0	0- 10	62.90	62.90	3.61,3.61
20	620.3	627.3	618.0	616.0	612.1	605.5	603.8	616.8	10- 20	179.4	242.3	13.9,13.9
30	553.9	559.2	562.0	548.4	544.3	534.4	541.7	544.9	20- 30	268.3	510.5	29.3,29.3
40	467.3	481.0	476.6	472.2	456.9	454.6	453.4	463.3	30- 40	317.6	828.1	47.6,47.6
50	366.1	380.0	382.3	373.3	355.6	354.4	358.0	361.0	40- 50	321.2	1149	66,66
60	256.4	274.9	279.1	267.3	247.1	248.5	255.4	255.1	50- 60	280.7	1430	82.1,82.1
70	143.0	166.4	170.5	157.7	136.7	140.9	151.1	148.9	60- 70	204.0	1634	93.8,93.8
80	41.11	55.81	0	47.15	35.14	37.61	0	44.02	70- 80	101.1	1735	99.6,99.6
90	0	0	0	0	0	0	0	0	80- 90	6.137	1741	100,100
100									90-100			
110									100-110			
120									110-120			
130									120-130			
140									130-140			
150									140-150			
160									150-160			
170									160-170			
180									170-180			
DEG	LUMINOUS INTENSITY:cd									UNIT:lm		

Conical surface Flux(90deg): 991.11 lm

%lum = 56.9%

%lamp = 56.9%

Conical surface Flux(120deg): 1430 lm

%lum = 82.1%

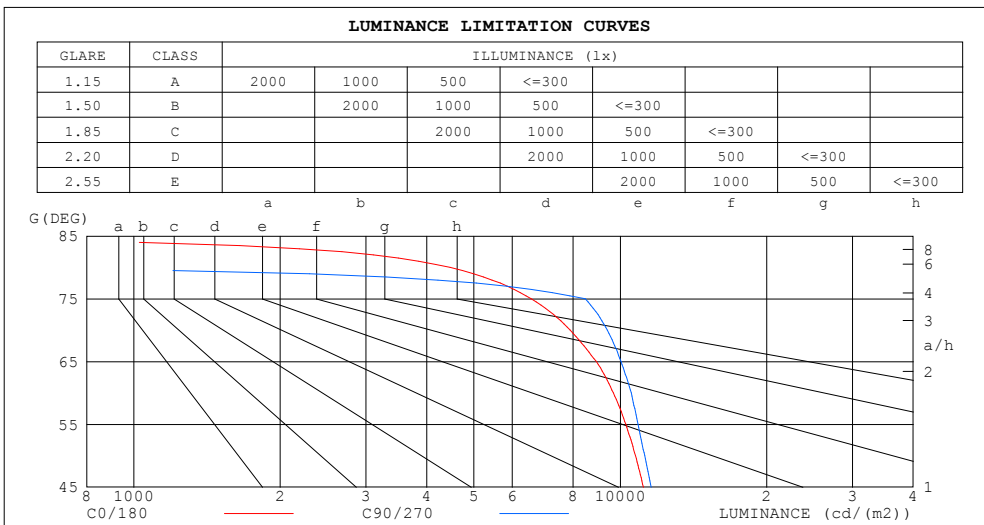
%lamp = 82.1%

H(β) Range:-90 - 90DEG
H(β) Interval: 1.0DEG
Test Speed: HIGH
Temperature:25.3DEG
Operators:
Test Date:24 Aug 2023

V(B) Range:-75 - 75DEG
V(B) Interval: 5.0DEG
Test System:EVERFINE GO-2000A_V1 SYSTEM V2.0.366
Humidity:65.0%
Test Distance:7.500m [K=1.0840]
Remarks: TÜV RHEINLAND

LUMINANCE LIMITATION CURVES

Test:U:219.21V I:0.0659A P:14.014W PF:0.9652 Freq:49.99Hz Lamp Flux:1741.21x1 lm		
NAME: GLM-DOR260D-15W(4000K)	TYPE:LED	WEIGHT:
SPEC.:	DIM.:	SERIAL No.:1
MFR.: EVERFINE	SUR.:	Shielding Angle:



LUMINANCE cd/(m2)		
G (DEG)	C0/180	C90/270
85	167	0
80	4467	0
75	6561	8468
70	7888	9407
65	8930	10034
60	9677	10534
55	10261	10876
50	10747	11222
45	11156	11573

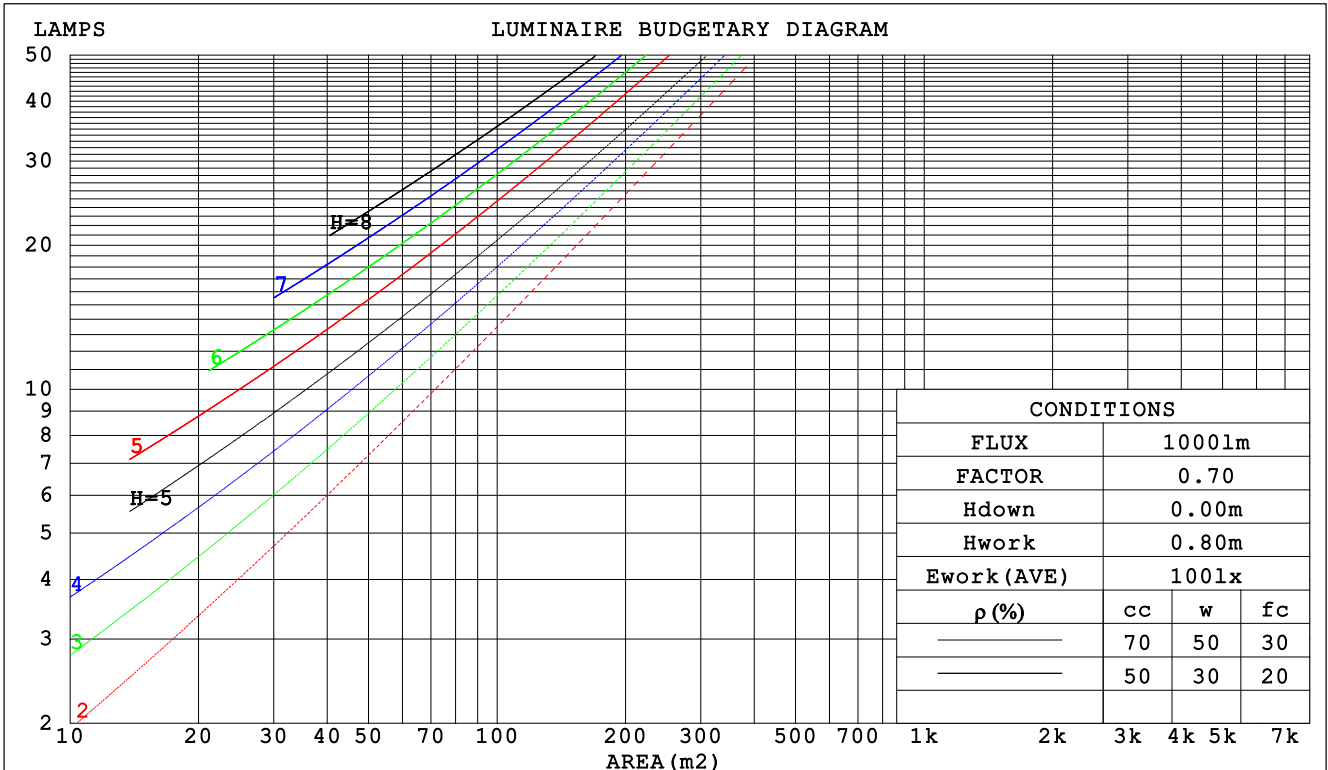
H(β) Range:-90 - 90DEG
H(β) Interval: 1.0DEG
Test Speed: HIGH
Temperature:25.3DEG
Operators:
Test Date:24 Aug 2023

V(B) Range:-75 - 75DEG
V(B) Interval: 5.0DEG
Test System:EVERFINE GO-2000A_V1 SYSTEM V2.0.366
Humidity:65.0%
Test Distance:7.500m [K=1.0840]
Remarks: TÜV RHEINLAND

CU AND LUMINAIRE BUDGETARY ESTIMATE DIAGRAM

Test:U:219.21V I:0.0659A P:14.014W PF:0.9652 Freq:49.99Hz Lamp Flux:1741.21x1 lm		
NAME: GLM-DOR260D-15W(4000K)	TYPE:LED	WEIGHT:
SPEC.:	DIM.:	SERIAL No.:1
MFR.: EVERFINE	SUR.:	Shielding Angle:

ρ_{cc}	80%			70%			50%			30%			10%			0
ρ_w	50%	30%	10%	50%	30%	10%	50%	30%	10%	50%	30%	10%	50%	30%	10%	0
ρ_{fc}	20%			20%			20%			20%			20%			0
RCR	RCR:Room Cavity Ratio						Coefficients of Utilization(CU)									
0.0	1.19	1.19	1.19	1.16	1.16	1.16	1.11	1.11	1.11	1.06	1.06	1.06	1.02	1.02	1.02	1.00
1.0	1.05	1.01	.98	1.03	.99	.96	.99	.96	.93	.95	.92	.90	.91	.89	.87	.85
2.0	.92	.86	.80	.90	.84	.79	.87	.82	.77	.83	.79	.76	.80	.77	.74	.72
3.0	.81	.73	.67	.80	.72	.66	.77	.70	.65	.74	.69	.64	.71	.67	.63	.61
4.0	.72	.63	.57	.71	.63	.57	.68	.61	.56	.66	.60	.55	.64	.59	.54	.52
5.0	.64	.56	.49	.63	.55	.49	.61	.54	.48	.59	.53	.48	.57	.52	.47	.45
6.0	.58	.49	.43	.57	.49	.43	.55	.48	.42	.54	.47	.42	.52	.46	.42	.40
7.0	.53	.44	.38	.52	.44	.38	.50	.43	.38	.49	.42	.37	.48	.42	.37	.35
8.0	.48	.40	.34	.47	.39	.34	.46	.39	.34	.45	.38	.33	.44	.38	.33	.31
9.0	.44	.36	.31	.44	.36	.31	.43	.35	.30	.41	.35	.30	.40	.34	.30	.28
10.0	.41	.33	.28	.40	.33	.28	.39	.32	.28	.38	.32	.28	.38	.32	.27	.26



H(β) Range:-90 - 90DEG
H(β) Interval: 1.0DEG
Test Speed: HIGH
Temperature:25.3DEG
Operators:
Test Date:24 Aug 2023

V(B) Range:-75 - 75DEG
V(B) Interval: 5.0DEG
Test System:EVERFINE GO-2000A_V1 SYSTEM V2.0.366
Humidity:65.0%
Test Distance:7.500m [K=1.0840]
Remarks: TÜV RHEINLAND

WEC AND CCEC

Test:U:219.21V I:0.0659A P:14.014W PF:0.9652 Freq:49.99Hz Lamp Flux:1741.21x1 lm		
NAME: GLM-DOR260D-15W(4000K)	TYPE:LED	WEIGHT:
SPEC.:	DIM.:	SERIAL No.:1
MFR.: EVERFINE	SUR.:	Shielding Angle:

ρ _{cc}	80%			70%			50%			30%			10%			0
ρ _w	50%	30%	10%	50%	30%	10%	50%	30%	10%	50%	30%	10%	50%	30%	10%	0
ρ _{fc}	20%			20%			20%			20%			20%			0
RCR	RCR:Room Cavity Ratio						Wall Exitance Coefficients (WEC)									
0.0																
1.0	.285	.162	.051	.278	.159	.050	.265	.152	.049	.253	.146	.047	.242	.140	.045	
2.0	.276	.151	.046	.270	.149	.046	.258	.144	.045	.247	.139	.043	.238	.134	.042	
3.0	.259	.138	.041	.253	.136	.041	.243	.132	.040	.234	.128	.039	.225	.124	.039	
4.0	.241	.125	.037	.236	.123	.036	.227	.120	.036	.218	.117	.035	.211	.114	.035	
5.0	.224	.114	.033	.219	.113	.033	.211	.110	.032	.204	.108	.032	.197	.105	.032	
6.0	.208	.104	.030	.205	.103	.030	.197	.101	.029	.191	.099	.029	.184	.097	.029	
7.0	.195	.096	.027	.191	.095	.027	.185	.093	.027	.179	.092	.027	.173	.090	.026	
8.0	.182	.089	.025	.179	.088	.025	.173	.087	.025	.168	.085	.025	.163	.084	.024	
9.0	.171	.083	.023	.168	.082	.023	.163	.081	.023	.158	.079	.023	.154	.078	.023	
10.0	.161	.077	.021	.159	.077	.021	.154	.075	.021	.150	.074	.021	.145	.073	.021	

ρ _{cc}	80%			70%			50%			30%			10%			0
ρ _w	50%	30%	10%	50%	30%	10%	50%	30%	10%	50%	30%	10%	50%	30%	10%	0
ρ _{fc}	20%			20%			20%			20%			20%			0
RCR	RCR:Room Cavity Ratio						Ceiling Cavity Exitance Coefficients (CCEC)									
0.0	.190	.190	.190	.163	.163	.163	.111	.111	.111	.064	.064	.064	.020	.020	.020	
1.0	.179	.156	.136	.153	.134	.117	.105	.092	.081	.060	.053	.047	.019	.017	.015	
2.0	.170	.132	.100	.146	.114	.086	.100	.079	.060	.058	.046	.035	.018	.015	.012	
3.0	.162	.114	.076	.139	.099	.066	.096	.068	.046	.055	.040	.027	.018	.013	.009	
4.0	.155	.101	.060	.133	.087	.052	.091	.061	.036	.053	.036	.022	.017	.012	.007	
5.0	.147	.090	.048	.127	.078	.042	.087	.055	.030	.051	.032	.018	.016	.010	.006	
6.0	.140	.082	.040	.121	.071	.035	.083	.050	.025	.048	.029	.015	.016	.010	.005	
7.0	.134	.075	.034	.115	.065	.029	.080	.046	.021	.046	.027	.012	.015	.009	.004	
8.0	.127	.069	.029	.110	.060	.025	.076	.042	.018	.044	.025	.011	.014	.008	.004	
9.0	.122	.064	.026	.105	.056	.022	.073	.039	.016	.042	.023	.009	.014	.008	.003	
10.0	.116	.060	.023	.100	.052	.020	.069	.037	.014	.040	.022	.008	.013	.007	.003	

H(β) Range:-90 - 90DEG
H(β) Interval: 1.0DEG
Test Speed: HIGH
Temperature:25.3DEG
Operators:
Test Date:24 Aug 2023

V(B) Range:-75 - 75DEG
V(B) Interval: 5.0DEG
Test System:EVERFINE GO-2000A_V1 SYSTEM V2.0.366
Humidity:65.0%
Test Distance:7.500m [K=1.0840]
Remarks: TÜV RHEINLAND

UGR(Unified Glare Rating) Table

Test:U:219.21V I:0.0659A P:14.014W PF:0.9652 Freq:49.99Hz Lamp Flux:1741.21x1 lm										
NAME: GLM-DOR260D-15W(4000K)					TYPE:LED			WEIGHT:		
SPEC.:					DIM.:			SERIAL No.:1		
MFR.: EVERFINE					SUR.:			Shielding Angle:		
ceiling/cavity	0.7	0.7	0.5	0.5	0.3	0.7	0.7	0.5	0.5	0.3
walls	0.5	0.3	0.5	0.3	0.3	0.5	0.3	0.5	0.3	0.3
working plane	0.2	0.2	0.2	0.2	0.2	0.2	0.2	0.2	0.2	0.2
Room dimensions	Viewed crosswise					Viewed endwise				
x = 2H y = 2H	21.1	22.6	21.4	22.8	23.0	21.4	22.9	21.7	23.1	23.3
3H	22.4	23.7	22.7	24.0	24.2	22.9	24.2	23.2	24.5	24.7
4H	22.8	24.1	23.1	24.4	24.6	23.4	24.7	23.7	25.0	25.2
6H	23.0	24.3	23.4	24.5	24.8	23.5	24.7	23.8	25.0	25.2
8H	23.0	24.2	23.4	24.5	24.8	23.4	24.6	23.8	24.9	25.2
12H	23.0	24.1	23.4	24.4	24.7	23.4	24.5	23.7	24.8	25.1
4H 2H	21.7	23.0	22.0	23.3	23.5	22.0	23.3	22.3	23.5	23.8
3H	23.2	24.3	23.6	24.6	24.9	23.6	24.8	24.0	25.1	25.4
4H	23.8	24.8	24.1	25.1	25.4	24.3	25.3	24.7	25.7	26.0
6H	24.1	25.0	24.5	25.3	25.7	24.4	25.3	24.8	25.7	26.0
8H	24.1	25.0	24.5	25.3	25.7	24.4	25.2	24.8	25.6	26.0
12H	24.1	24.9	24.5	25.2	25.6	24.3	25.1	24.7	25.5	25.9
8H 4H	24.0	24.9	24.4	25.2	25.6	24.5	25.4	24.9	25.7	26.1
6H	24.5	25.2	24.9	25.6	26.0	24.7	25.4	25.1	25.8	26.2
8H	24.5	25.2	25.0	25.6	26.0	24.6	25.2	25.1	25.7	26.1
12H	24.5	25.1	25.0	25.5	26.0	24.6	25.1	25.1	25.6	26.0
12H 4H	24.0	24.8	24.4	25.2	25.6	24.5	25.3	24.9	25.7	26.1
6H	24.5	25.1	24.9	25.5	25.9	24.7	25.3	25.1	25.7	26.2
8H	24.5	25.1	25.0	25.5	26.0	24.6	25.2	25.1	25.6	26.1
Variations with the observer position at spacings:										
S = 1.0H	+ 0.2 / - 0.3					+ 0.2 / - 0.3				
1.5H	+ 0.3 / - 0.4					+ 0.1 / - 0.3				
2.0H	+ 0.3 / - 0.5					+ 0.2 / - 0.4				

CIE Pub.117, 1741 lm Total Lamp Luminous Flux Corrected (8log(F/F0) = 1.9)

H(β) Range:-90 - 90DEG	V(B) Range:-75 - 75DEG
H(β) Interval: 1.0DEG	V(B) Interval: 5.0DEG
Test Speed: HIGH	Test System:EVERFINE GO-2000A_V1 SYSTEM V2.0.366
Temperature:25.3DEG	Humidity:65.0%
Operators:	Test Distance:7.500m [K=1.0840]
Test Date:24 Aug 2023	Remarks: TÜV RHEINLAND

UTILIZATION FACTORS TABLE

Test:U:219.21V I:0.0659A P:14.014W PF:0.9652 Freq:49.99Hz Lamp Flux:1741.21x1 lm		
NAME: GLM-DOR260D-15W(4000K)	TYPE:LED	WEIGHT:
SPEC.:	DIM.:	SERIAL No.:1
MFR.: EVERFINE	SUR.:	Shielding Angle:

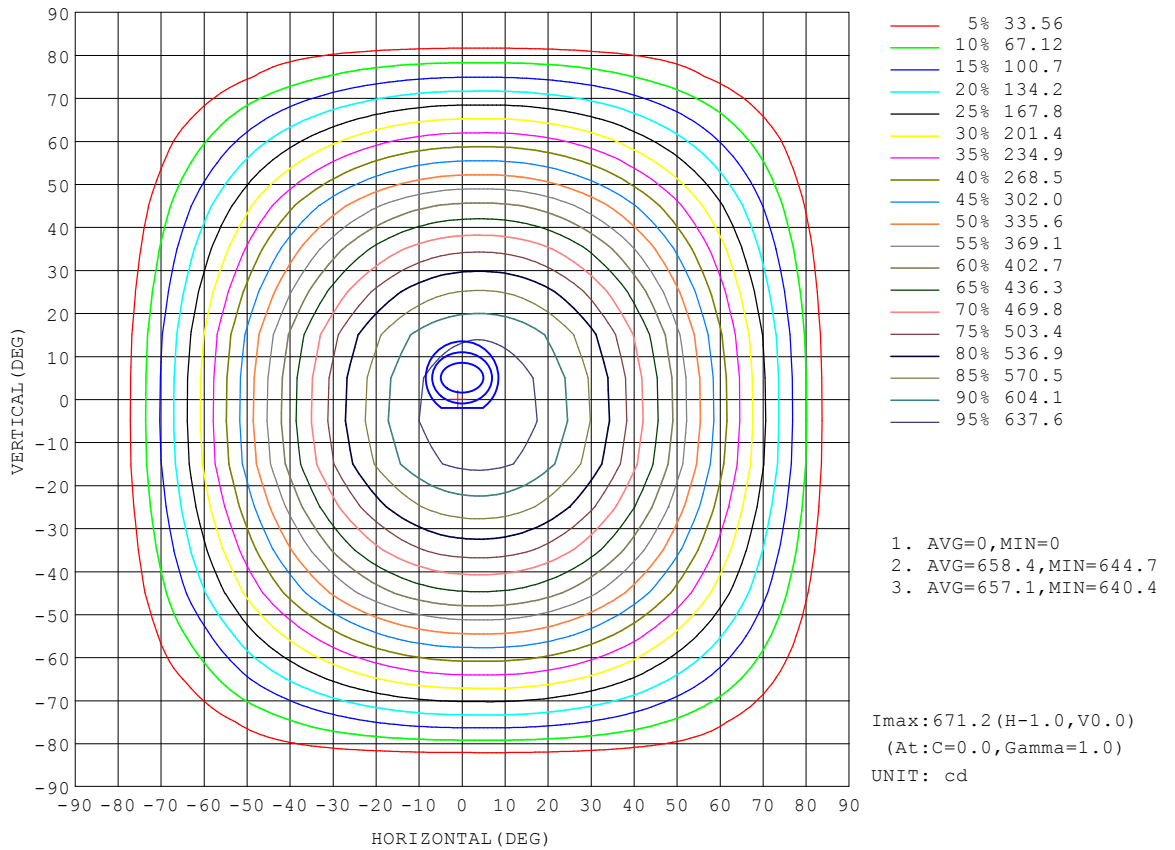
REFLECTANCE										
Ceiling	0.8	0.8	0.8	0.7	0.7	0.7	0.5	0.5	0.5	0
Walls	0.7	0.5	0.3	0.7	0.5	0.3	0.7	0.5	0.3	0
Working plane	0.2	0.2	0.2	0.2	0.2	0.2	0.2	0.2	0.2	0
ROOM INDEX	UTILIZATION FACTORS (PERCENT) k(RI) x RCR = 5									
k = 0.60	59	48	41	58	48	41	57	47	41	34
0.80	69	58	51	68	58	51	67	57	50	44
1.00	78	67	60	77	66	60	74	68	59	52
1.25	85	75	68	83	74	68	81	73	67	60
1.50	90	80	74	88	79	73	85	78	72	65
2.00	96	88	82	95	87	82	91	85	80	73
2.50	100	93	87	98	92	86	95	89	85	77
3.00	104	97	92	101	96	91	97	93	89	81
4.00	107	102	98	105	100	96	101	97	94	85
5.00	110	105	101	107	103	100	103	100	97	88
ROOM INDEX	UF(total)									Direct
According to DIN EN 13032-2 2004			Suspended				SHRNOM = 1.25			

H(β) Range:-90 - 90DEG
H(β) Interval: 1.0DEG
Test Speed: HIGH
Temperature:25.3DEG
Operators:
Test Date:24 Aug 2023

V(B) Range:-75 - 75DEG
V(B) Interval: 5.0DEG
Test System:EVERFINE GO-2000A_V1 SYSTEM V2.0.366
Humidity:65.0%
Test Distance:7.500m [K=1.0840]
Remarks: TÜV RHEINLAND

ISOCANDELA DIAGRAM

Test:U:219.21V I:0.0659A P:14.014W PF:0.9652 Freq:49.99Hz Lamp Flux:1741.21x1 lm		
NAME: GLM-DOR260D-15W(4000K)	TYPE:LED	WEIGHT:
SPEC.:	DIM.:	SERIAL No.:1
MFR.: EVERFINE	SUR.:	Shielding Angle:

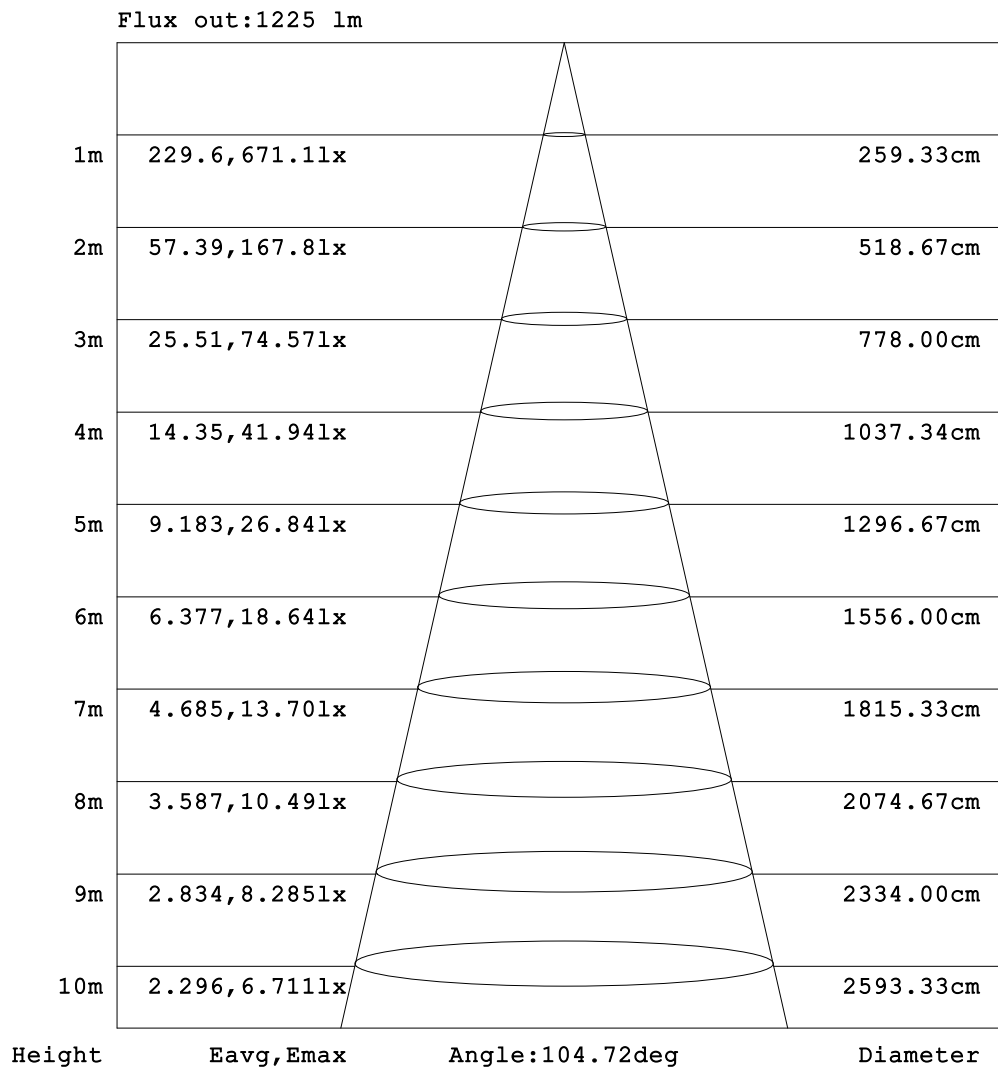


H(β) Range:-90 - 90DEG
 H(β) Interval: 1.0DEG
 Test Speed: HIGH
 Temperature:25.3DEG
 Operators:
 Test Date:24 Aug 2023

V(B) Range:-75 - 75DEG
 V(B) Interval: 5.0DEG
 Test System:EVERFINE GO-2000A_V1 SYSTEM V2.0.366
 Humidity:65.0%
 Test Distance:7.500m [K=1.0840]
 Remarks: TÜV RHEINLAND

AAI Figure

Test:U:219.21V I:0.0659A P:14.014W PF:0.9652 Freq:49.99Hz Lamp Flux:1741.21x1 lm		
NAME: GLM-DOR260D-15W(4000K)	TYPE:LED	WEIGHT:
SPEC.:	DIM.:	SERIAL No.:1
MFR.: EVERFINE	SUR.:	Shielding Angle:



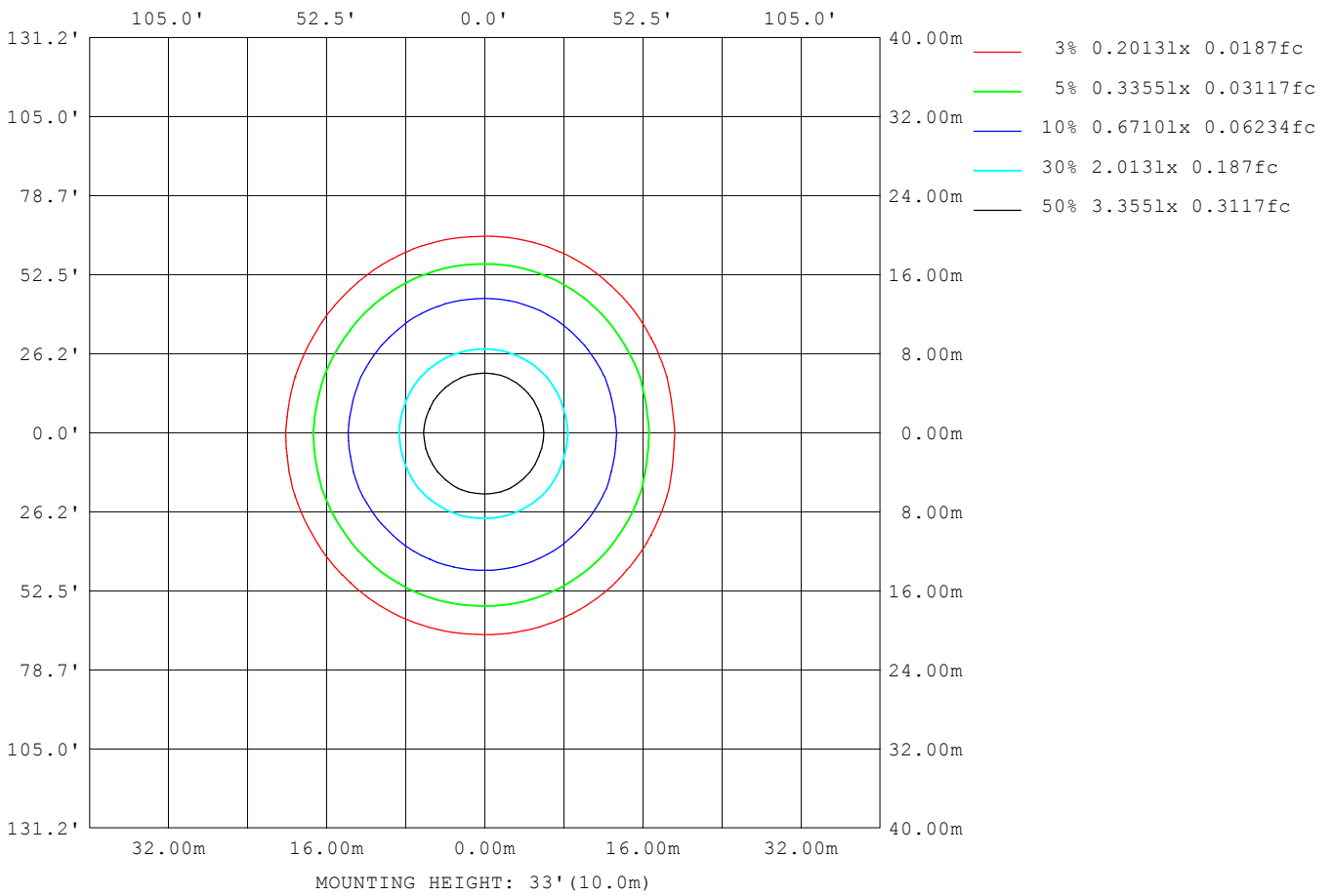
Note:The Curves indicate the illuminated area and the average illumination when the luminaire is at different distance.

H(β) Range:-90 - 90DEG
H(β) Interval: 1.0DEG
Test Speed: HIGH
Temperature:25.3DEG
Operators:
Test Date:24 Aug 2023

V(B) Range:-75 - 75DEG
V(B) Interval: 5.0DEG
Test System:EVERFINE GO-2000A_V1 SYSTEM V2.0.366
Humidity:65.0%
Test Distance:7.500m [K=1.0840]
Remarks: TÜV RHEINLAND

ISOLUX DIAGRAM

Test:U:219.21V I:0.0659A P:14.014W PF:0.9652 Freq:49.99Hz Lamp Flux:1741.21x1 lm		
NAME: GLM-DOR260D-15W(4000K)	TYPE:LED	WEIGHT:
SPEC.:	DIM.:	SERIAL No.:1
MFR.: EVERFINE	SUR.:	Shielding Angle:



H(β) Range:-90 - 90DEG
 H(β) Interval: 1.0DEG
 Test Speed: HIGH
 Temperature:25.3DEG
 Operators:
 Test Date:24 Aug 2023

V(B) Range:-75 - 75DEG
 V(B) Interval: 5.0DEG
 Test System:EVERFINE GO-2000A_V1 SYSTEM V2.0.366
 Humidity:65.0%
 Test Distance:7.500m [K=1.0840]
 Remarks: TÜV RHEINLAND

LED Avg.L Report

Test:U:219.21V I:0.0659A P:14.014W PF:0.9652 Freq:49.99Hz Lamp Flux:1741.21x1 lm		
NAME: GLM-DOR260D-15W(4000K)	TYPE:LED	WEIGHT:
SPEC.:	DIM.:	SERIAL No.:1
MFR.: EVERFINE	SUR.:	Shielding Angle:

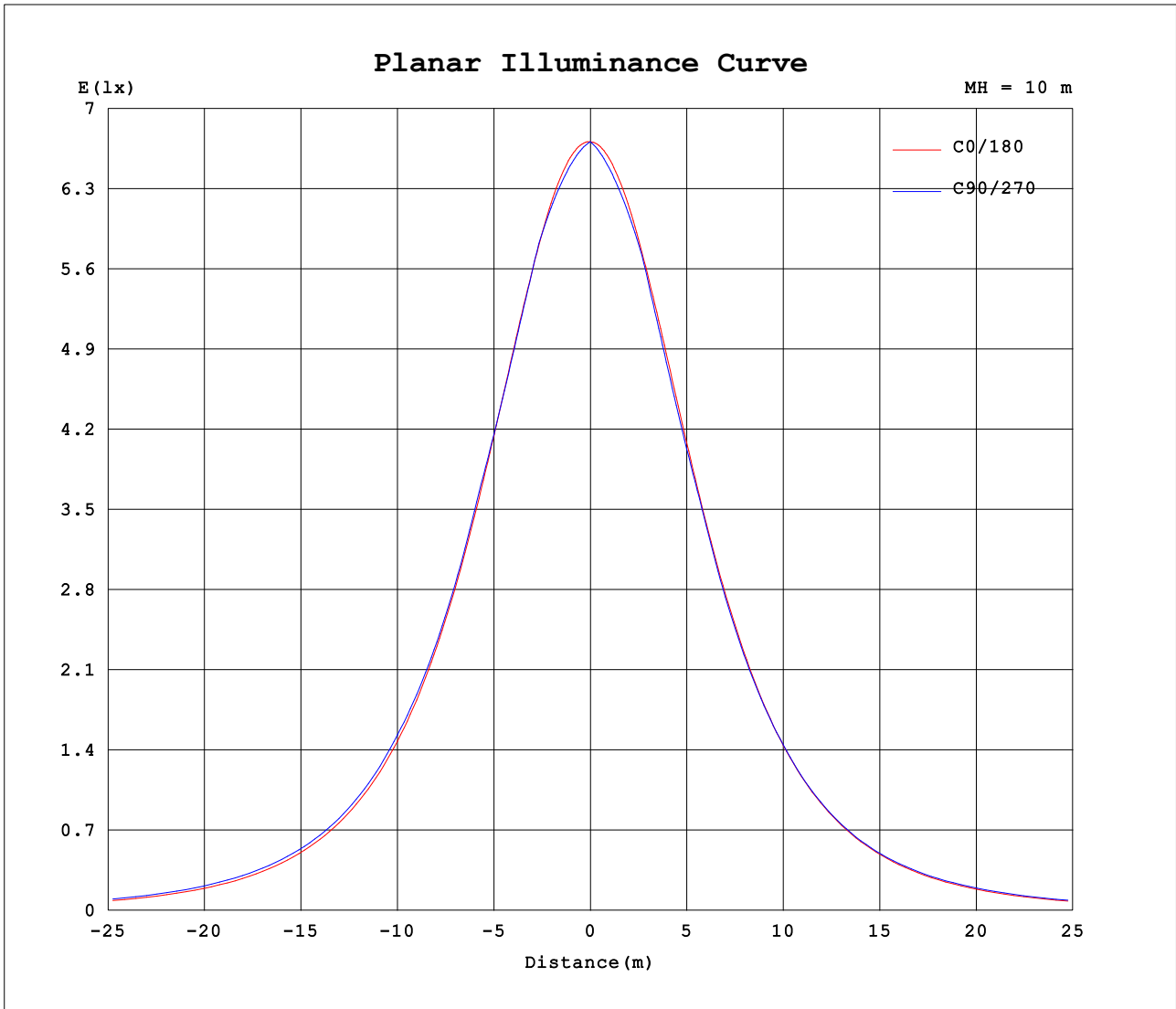
AvgL	cd/m2
L_0~180 (65) av	8740
L_0~180 (75) av	6351
L_0~180 (85) av	86
L_90~270 (65) av	9552
L_90~270 (75) av	7842
L_90~270 (85) av	0
L_45 (65) av	9240
L_45 (75) av	7388
L_45 (85) av	0

Standard: GB/T 29293-2012

H(β) Range:-90 - 90DEG
H(β) Interval: 1.0DEG
Test Speed: HIGH
Temperature:25.3DEG
Operators:
Test Date:24 Aug 2023

V(B) Range:-75 - 75DEG
V(B) Interval: 5.0DEG
Test System:EVERFINE GO-2000A_V1 SYSTEM V2.0.366
Humidity:65.0%
Test Distance:7.500m [K=1.0840]
Remarks: TÜV RHEINLAND

Planar Illuminance Curve



H(β) Range:-90 - 90DEG
H(β) Interval: 1.0DEG
Test Speed: HIGH
Temperature:25.3DEG
Operators:
Test Date:24 Aug 2023

V(B) Range:-75 - 75DEG
V(B) Interval: 5.0DEG
Test System:EVERFINE GO-2000A_V1 SYSTEM V2.0.366
Humidity:65.0%
Test Distance:7.500m [K=1.0840]
Remarks: TüV RHEINLAND

LUMINOUS DISTRIBUTION INTENSITY DATA

Test:U:219.21V I:0.0659A P:14.014W PF:0.9652 Freq:49.99Hz Lamp Flux:1741.21x1 lm		
NAME: GLM-DOR260D-15W(4000K)	TYPE:LED	WEIGHT:
SPEC.:	DIM.:	SERIAL No.:1
MFR.: EVERFINE	SUR.:	Shielding Angle:

Table--1

UNIT: cd

C (DEG) \ γ (DEG)	0	5	10	15	20	25	30	35	40	45	50	55	60	65	70	75	80	85	90
0	671	671	671	671	671	671	671	671	671	671	671	671	671	671	671	671	671	671	671
5	669	668	668	667	667	666	666	665	665	665	664	664	664	664	663	663	663	663	662
10	660	659	658	658	657	657	657	656	656	655	655	655	655	655	655	655	655	654	654
15	644	643	642	642	642	641	640	640	640	641	643	644	645	645	646	646	646	646	646
20	620	620	620	620	618	618	618	621	624	627	627	625	623	622	620	620	619	618	618
25	590	590	592	590	588	590	595	601	597	594	592	592	593	593	592	592	591	591	590
30	554	555	556	553	555	562	564	559	557	559	561	563	562	562	562	563	563	562	562
35	513	515	514	511	520	522	517	519	523	524	525	526	526	525	524	523	522	520	519
40	467	472	467	471	478	471	475	480	480	481	482	483	482	481	480	479	478	477	477
45	418	425	416	430	423	427	431	431	433	436	433	433	434	435	436	437	436	435	434
50	366	372	369	374	373	378	378	383	381	380	385	389	389	388	386	385	384	383	382
55	312	316	321	314	324	323	329	324	330	335	333	332	333	334	335	334	333	332	331
60	256	257	265	267	266	271	268	278	275	275	278	281	282	282	282	282	281	280	279
65	200	200	201	207	213	213	217	215	220	223	224	225	227	228	228	228	227	226	225
70	143	152	155	156	157	156	161	162	162	166	171	172	172	173	173	173	172	172	171
75	90.0	95.4	98.4	103	101	104	106	111	111	112	114	116	117	118	119	119	118	117	116
80	41.1	48.8	50.8	51.5	51.9	54.3	54.8	58.3	61.0	55.8	47.2	38.1	29.2	20.9	13.7	7.82	3.50	0.87	0.00
85	0.77	2.02	5.04	6.56	7.65	7.15	0.00	0.00	0.00	0.00	0.00	0.00	0.00	0.00	0.00	0.00	0.00	0.00	0.00
90	0.00	0.00	0.00	0.00	0.00	0.00	0.00	0.00	0.00	0.00	0.00	0.00	0.00	0.00	0.00	0.00	0.00	0.00	0.00

H(β) Range:-90 - 90DEG
H(β) Interval: 1.0DEG
Test Speed: HIGH
Temperature:25.3DEG
Operators:
Test Date:24 Aug 2023

V(B) Range:-75 - 75DEG
V(B) Interval: 5.0DEG
Test System:EVERFINE GO-2000A_V1 SYSTEM V2.0.366
Humidity:65.0%
Test Distance:7.500m [K=1.0840]
Remarks: TÜV RHEINLAND

LUMINOUS DISTRIBUTION INTENSITY DATA

Test:U:219.21V I:0.0659A P:14.014W PF:0.9652 Freq:49.99Hz Lamp Flux:1741.21x1 lm		
NAME: GLM-DOR260D-15W(4000K)	TYPE:LED	WEIGHT:
SPEC.:	DIM.:	SERIAL No.:1
MFR.: EVERFINE	SUR.:	Shielding Angle:

Table--2

UNIT: cd

C (DEG) \ γ (DEG)	95	100	105	110	115	120	125	130	135	140	145	150	155	160	165	170	175	180	185
0	671	671	671	671	671	671	671	671	671	671	671	671	671	671	671	671	671	671	671
5	662	662	662	662	662	662	662	662	662	662	662	663	663	664	664	665	666	667	666
10	654	654	653	653	652	652	651	651	650	649	649	648	649	650	651	652	654	655	653
15	645	644	643	642	641	640	638	637	636	636	634	632	630	629	630	632	634	637	633
20	618	617	617	617	617	617	617	617	616	614	612	611	608	605	603	605	608	612	607
25	589	588	588	587	586	586	586	586	585	584	584	581	580	578	574	571	575	581	574
30	561	561	560	558	555	552	549	548	548	550	548	546	544	543	540	534	537	544	535
35	518	518	517	517	517	518	519	514	509	505	506	507	503	501	502	495	494	503	492
40	476	476	475	474	472	470	469	470	472	468	460	459	461	456	455	452	446	457	444
45	433	432	431	430	428	427	426	422	417	419	422	411	408	410	405	407	395	408	393
50	382	382	382	381	380	378	376	374	373	367	362	367	358	356	355	354	345	356	343
55	330	330	329	328	327	327	326	323	319	317	315	306	311	301	305	298	294	302	292
60	279	279	278	277	275	272	268	267	267	264	258	259	250	254	243	244	244	247	241
65	225	224	223	223	221	220	219	215	210	206	207	202	198	192	196	193	190	192	187
70	171	171	170	169	167	165	162	159	158	157	151	144	145	140	134	131	131	137	128
75	116	116	115	114	113	112	110	109	106	101	96.3	94.1	88.1	87.8	84.1	82.8	81.4	84.2	78.3
80	0.87	3.43	7.58	13.1	19.8	27.1	34.8	41.7	47.2	49.5	48.4	46.6	41.0	39.2	36.1	33.5	30.7	35.1	27.6
85	0.00	0.00	0.00	0.00	0.00	0.00	0.00	0.00	0.00	0.00	0.00	0.00	3.40	0.18	5.11	0.14	0.02	0.03	0.01
90	0.00	0.00	0.00	0.00	0.00	0.00	0.00	0.00	0.00	0.00	0.00	0.00	0.00	0.00	0.00	0.00	0.00	0.00	0.00

H(β) Range:-90 - 90DEG
H(β) Interval: 1.0DEG
Test Speed: HIGH
Temperature:25.3DEG
Operators:
Test Date:24 Aug 2023

V(B) Range:-75 - 75DEG
V(B) Interval: 5.0DEG
Test System:EVERFINE GO-2000A_V1 SYSTEM V2.0.366
Humidity:65.0%
Test Distance:7.500m [K=1.0840]
Remarks: TÜV RHEINLAND

LUMINOUS DISTRIBUTION INTENSITY DATA

Test:U:219.21V I:0.0659A P:14.014W PF:0.9652 Freq:49.99Hz Lamp Flux:1741.21x1 lm		
NAME: GLM-DOR260D-15W(4000K)	TYPE:LED	WEIGHT:
SPEC.:	DIM.:	SERIAL No.:1
MFR.: EVERFINE	SUR.:	Shielding Angle:

Table--3

UNIT: cd

C (DEG) γ (DEG)	190	195	200	205	210	215	220	225	230	235	240	245	250	255	260	265	270	275	280
0	671	671	671	671	671	671	671	671	671	671	671	671	671	671	671	671	671	671	671
5	665	663	663	662	661	660	660	659	659	659	658	658	658	658	658	658	659	659	659
10	651	649	647	646	645	645	645	645	645	645	646	646	646	646	646	647	647	647	647
15	630	627	625	626	626	627	628	629	629	629	630	631	632	632	633	634	634	635	635
20	602	600	601	602	604	604	604	606	606	605	605	604	604	604	603	603	604	604	605
25	568	569	572	573	573	574	573	573	573	572	571	571	571	571	571	572	572	573	574
30	531	535	537	536	536	537	537	534	533	533	535	537	539	540	541	541	542	542	543
35	491	496	494	494	496	494	491	493	497	501	499	498	497	496	496	497	497	498	500
40	448	449	448	451	447	446	452	455	451	449	450	451	452	453	453	453	453	454	455
45	402	398	401	397	398	406	402	399	402	405	406	406	407	407	408	408	409	410	411
50	349	347	347	346	353	347	350	354	354	354	356	357	358	358	358	358	358	359	360
55	293	298	291	299	292	299	299	300	302	305	305	305	305	305	306	306	307	308	309
60	239	235	244	237	244	242	246	249	248	248	250	252	254	255	255	255	255	256	257
65	187	187	182	186	187	192	190	192	196	198	199	200	201	202	203	203	203	204	206
70	125	126	130	134	132	137	141	141	142	144	146	148	150	151	151	151	151	152	153
75	76.9	76.9	80.3	80.9	84.9	84.4	88.1	91.2	93.0	94.0	95.0	96.1	97.1	98.0	98.7	99.1	99.0	99.9	101
80	28.3	29.3	33.5	34.1	37.9	38.5	39.1	37.6	33.6	28.2	22.3	16.4	11.0	6.40	2.91	0.74	0.00	0.74	2.97
85	0.01	3.48	0.00	0.68	0.00	0.00	0.00	0.00	0.00	0.00	0.00	0.00	0.00	0.00	0.00	0.00	0.00	0.00	0.00
90	0.00	0.00	0.00	0.00	0.00	0.00	0.00	0.00	0.00	0.00	0.00	0.00	0.00	0.00	0.00	0.00	0.00	0.00	0.00

H(β) Range:-90 - 90DEG
H(β) Interval: 1.0DEG
Test Speed: HIGH
Temperature:25.3DEG
Operators:
Test Date:24 Aug 2023

V(B) Range:-75 - 75DEG
V(B) Interval: 5.0DEG
Test System:EVERFINE GO-2000A_V1 SYSTEM V2.0.366
Humidity:65.0%
Test Distance:7.500m [K=1.0840]
Remarks: TÜV RHEINLAND

LUMINOUS DISTRIBUTION INTENSITY DATA

Test:U:219.21V I:0.0659A P:14.014W PF:0.9652 Freq:49.99Hz Lamp Flux:1741.21x1 lm		
NAME: GLM-DOR260D-15W(4000K)	TYPE:LED	WEIGHT:
SPEC.:	DIM.:	SERIAL No.:1
MFR.: EVERFINE	SUR.:	Shielding Angle:

Table--4

UNIT: cd

C (DEG) γ (DEG)	285	290	295	300	305	310	315	320	325	330	335	340	345	350	355				
0	671	671	671	671	671	671	671	671	671	671	671	671	671	671	671				
5	659	660	660	661	661	662	662	663	663	664	665	665	666	667	668				
10	647	648	648	648	649	649	650	651	652	653	654	655	656	657	659				
15	635	635	635	635	635	634	633	633	634	635	636	638	639	640	642				
20	606	607	609	611	613	616	617	615	613	611	611	613	616	617	618				
25	575	576	577	578	578	579	582	586	590	586	583	582	585	589	589				
30	543	544	544	545	546	546	545	544	547	553	553	548	547	553	553				
35	502	503	505	506	507	507	508	508	506	505	512	512	505	510	513				
40	456	458	459	461	463	463	463	464	465	463	460	469	465	463	470				
45	412	413	413	412	412	414	417	416	415	417	415	414	423	412	423				
50	361	363	364	366	367	364	361	364	367	364	366	363	367	364	369				
55	310	311	311	310	310	312	316	312	308	314	311	314	307	316	313				
60	258	258	259	259	260	258	255	257	261	254	258	255	259	259	255				
65	206	206	206	205	204	202	203	203	199	203	200	203	198	196	198				
70	153	153	153	153	153	151	149	146	147	147	144	146	148	149	149				
75	101	101	101	100	99.1	97.3	96.4	96.4	96.7	92.9	92.6	91.1	94.3	92.5	92.1				
80	6.61	11.5	17.5	24.2	31.2	38.0	44.0	47.2	45.4	43.1	43.6	42.6	43.6	44.7	45.2				
85	0.00	0.00	0.00	0.00	0.00	0.00	0.00	0.00	0.00	0.00	0.00	3.69	0.53	4.85	2.31	2.18			
90	0.00	0.00	0.00	0.00	0.00	0.00	0.00	0.00	0.00	0.00	0.00	0.00	0.00	0.00	0.00				

H(β) Range:-90 - 90DEG
H(β) Interval: 1.0DEG
Test Speed: HIGH
Temperature:25.3DEG
Operators:
Test Date:24 Aug 2023

V(B) Range:-75 - 75DEG
V(B) Interval: 5.0DEG
Test System:EVERFINE GO-2000A_V1 SYSTEM V2.0.366
Humidity:65.0%
Test Distance:7.500m [K=1.0840]
Remarks: TÜV RHEINLAND