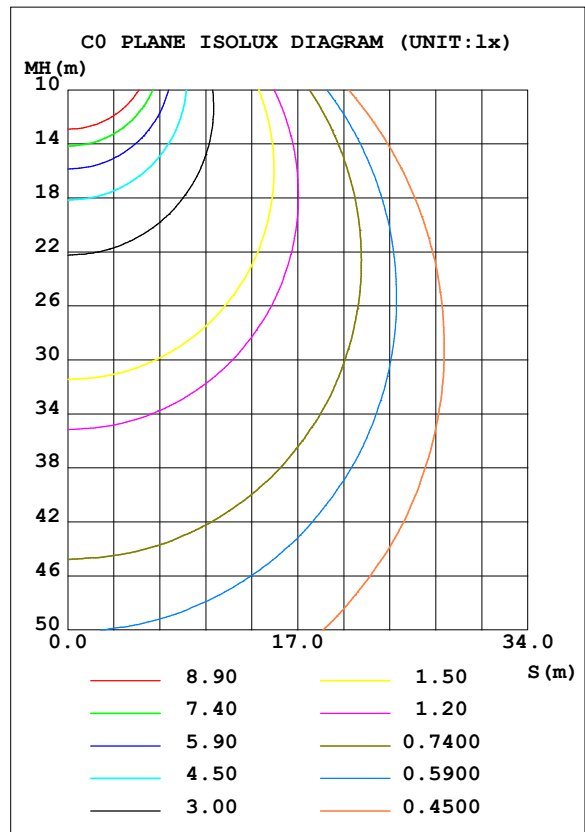
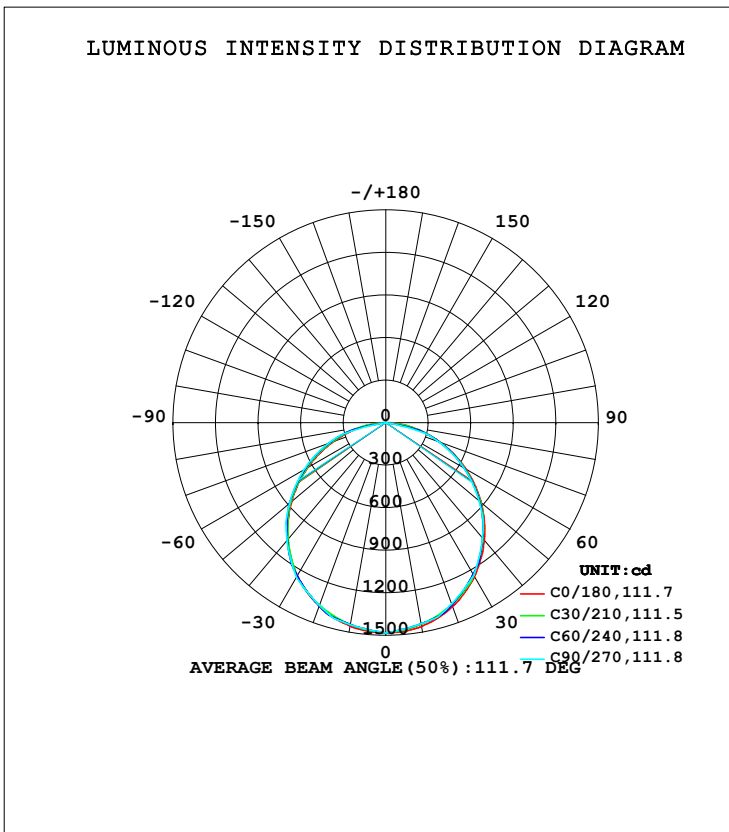


LUMINAIRE PHOTOMETRIC TEST REPORT

Test:U:220.07V I:0.1631A P:37.215W PF:0.9667 Freq:49.99Hz Lamp Flux:4148.98x1 lm		
NAME: GLM-DOR450D(3000K)	TYPE:LED	WEIGHT:
SPEC.:	DIM.:	SERIAL No.:1
MFR.: EVERFINE	SUR.:	Shielding Angle:

DATA OF LAMP		PHOTOMETRIC DATA Eff: 111.49 lm/W			
MODEL		I _{max} (cd)	1483	S/MH (C0/180)	1.25
NOMINAL POWER (W)		LOR (%)	100.0	S/MH (C90/270)	1.26
RATED VOLTAGE (V)	220.0	TOTAL FLUX (lm)	4149.0	η UP, DN (C0-180)	0.0, 49.6
NOMINAL FLUX (lm)	4148.98	CIE CLASS	DIRECT	η UP, DN (C180-360)	0.0, 50.4
LAMPS INSIDE	1	η up (%)	0.0	CIBSE SHR NOM	1.25
TEST VOLTAGE (V)	220	η down (%)	100.0	CIBSE SHR MAX	1.35



H(β) Range: -90 - 90DEG
 H(β) Interval: 1.0DEG
 Test Speed: HIGH
 Temperature: 25.3DEG
 Operators:
 Test Date: 06 December 2023

V(B) Range: -75 - 75DEG
 V(B) Interval: 5.0DEG
 Test System: EVERFINE GO-2000A_V1 SYSTEM V2.0.366
 Humidity: 65.0%
 Test Distance: 7.500m [K=1.0413]
 Remarks:

ZONAL FLUX DIAGRAM

ZONAL FLUX DIAGRAM:

γ	C0	C45	C90	C135	C180	C225	C270	C315	γ	Φ zone	Φ total	%lum, lamp
10	1460	1442	1440	1439	1456	1444	1446	1444	0- 10	139.3	139.3	3.36,3.36
20	1379	1373	1360	1372	1376	1380	1371	1381	10- 20	399.4	538.7	13,13
30	1253	1233	1241	1231	1247	1243	1259	1243	20- 30	603.8	1142	27.5,27.5
40	1082	1074	1061	1068	1074	1083	1083	1086	30- 40	726.7	1869	45.1,45.1
50	880.2	864.2	858.9	857.9	865.6	876.7	886.1	876.9	40- 50	752.1	2621	63.2,63.2
60	652.8	639.4	635.1	631.1	636.9	652.3	667.5	653.6	50- 60	679.0	3300	79.5,79.5
70	412.5	407.0	399.3	394.4	392.3	417.4	430.8	420.0	60- 70	521.6	3822	92.1,92.1
80	182.9	155.4	0	145.6	161.1	162.9	0	163.1	70- 80	294.3	4116	99.2,99.2
90	0	0	0	0	0	0	0	0	80- 90	32.94	4149	100,100
100									90-100			
110									100-110			
120									110-120			
130									120-130			
140									130-140			
150									140-150			
160									150-160			
170									160-170			
180									170-180			
DEG	LUMINOUS INTENSITY:cd									UNIT:lm		

Conical surface Flux(90deg): 2248.1 lm

%lum = 54.2%

%lamp = 54.2%

Conical surface Flux(120deg): 3300.2 lm

%lum = 79.5%

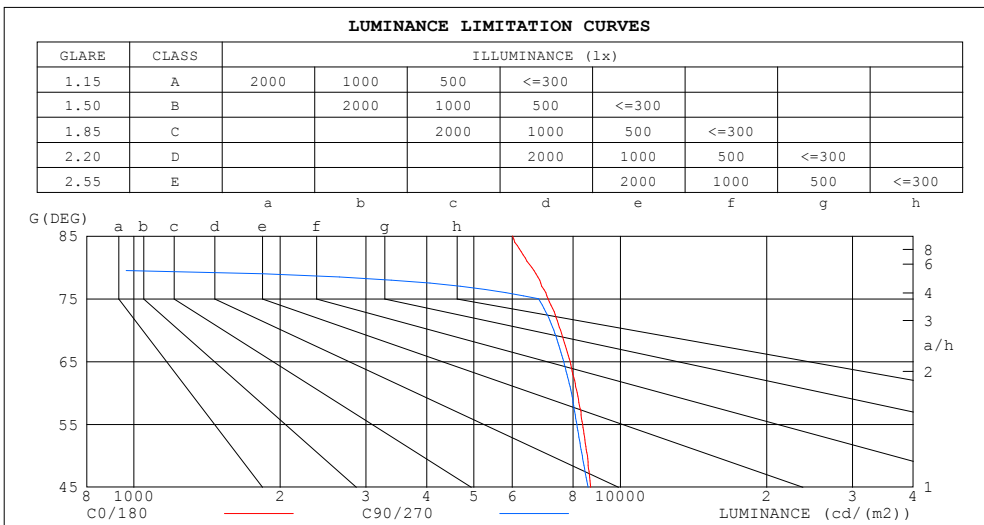
%lamp = 79.5%

H(β) Range:-90 - 90DEG
H(β) Interval: 1.0DEG
Test Speed: HIGH
Temperature:25.3DEG
Operators:
Test Date:06 December 2023

V(B) Range:-75 - 75DEG
V(B) Interval: 5.0DEG
Test System:EVERFINE GO-2000A_V1 SYSTEM V2.0.366
Humidity:65.0%
Test Distance:7.500m [K=1.0413]
Remarks:

LUMINANCE LIMITATION CURVES

Test:U:220.07V I:0.1631A P:37.215W PF:0.9667 Freq:49.99Hz Lamp Flux:4148.98x1 lm		
NAME: GLM-DOR450D(3000K)	TYPE:LED	WEIGHT:
SPEC.:	DIM.:	SERIAL No.:1
MFR.: EVERFINE	SUR.:	Shielding Angle:



LUMINANCE cd/(m2)		
G (DEG)	C0/180	C90/270
85	6005	0
80	6581	0
75	7105	6795
70	7537	7297
65	7886	7649
60	8160	7939
55	8366	8140
50	8558	8352
45	8688	8581

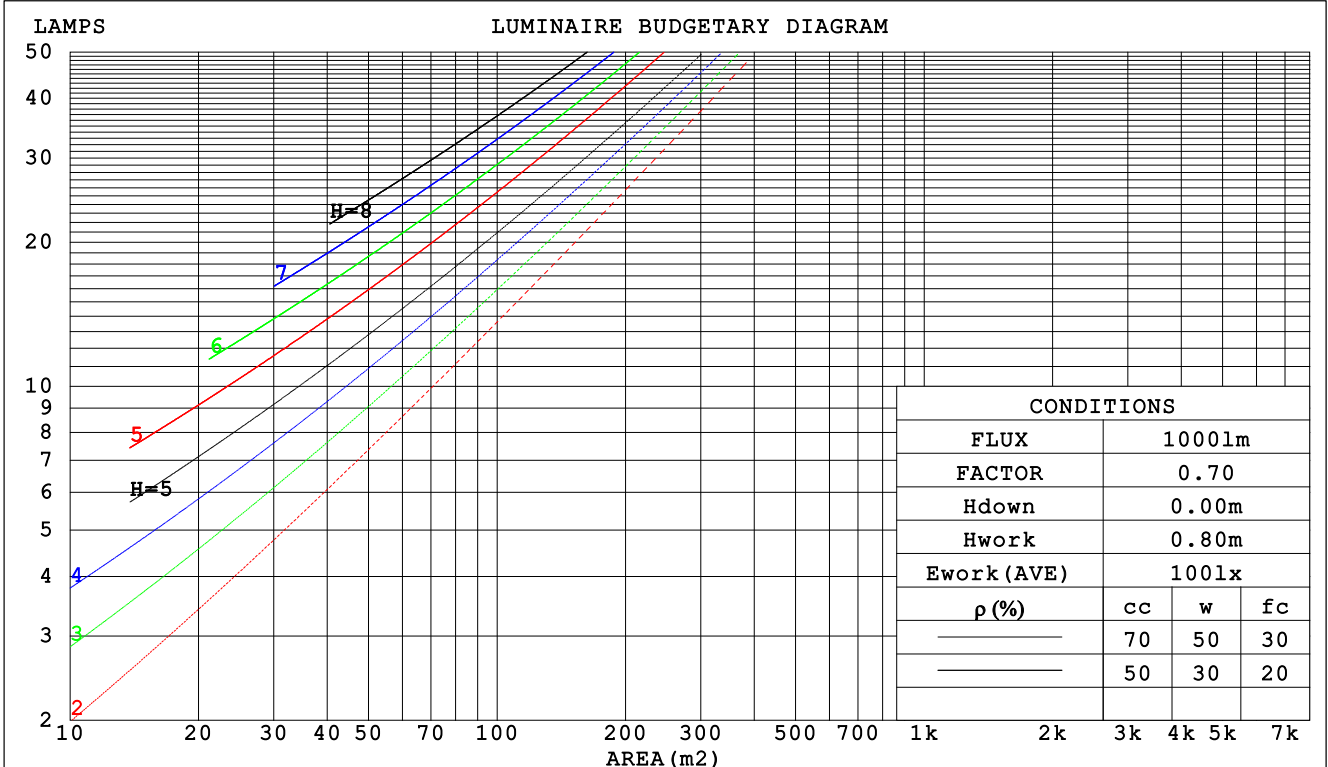
H(β) Range:-90 - 90DEG
H(β) Interval: 1.0DEG
Test Speed: HIGH
Temperature:25.3DEG
Operators:
Test Date:06 December 2023

V(B) Range:-75 - 75DEG
V(B) Interval: 5.0DEG
Test System:EVERFINE GO-2000A_V1 SYSTEM V2.0.366
Humidity:65.0%
Test Distance:7.500m [K=1.0413]
Remarks:

CU AND LUMINAIRE BUDGETARY ESTIMATE DIAGRAM

Test:U:220.07V I:0.1631A P:37.215W PF:0.9667 Freq:49.99Hz Lamp Flux:4148.98x1 lm		
NAME: GLM-DOR450D(3000K)	TYPE:LED	WEIGHT:
SPEC.:	DIM.:	SERIAL No.:1
MFR.: EVERFINE	SUR.:	Shielding Angle:

ρ_{cc}	80%			70%			50%			30%			10%			0
ρ_w	50%	30%	10%	50%	30%	10%	50%	30%	10%	50%	30%	10%	50%	30%	10%	0
ρ_{fc}	20%			20%			20%			20%			20%			0
RCR	RCR:Room Cavity Ratio															
	Coefficients of Utilization(CU)															
0.0	1.19	1.19	1.19	1.16	1.16	1.16	1.11	1.11	1.11	1.06	1.06	1.06	1.02	1.02	1.02	.00
1.0	1.04	1.00	.96	1.02	.98	.95	.98	.95	.92	.94	.91	.89	.90	.88	.86	.84
2.0	.91	.84	.79	.89	.83	.78	.86	.80	.76	.82	.78	.74	.79	.76	.72	.70
3.0	.80	.72	.65	.78	.71	.65	.75	.69	.63	.72	.67	.62	.70	.65	.61	.59
4.0	.71	.62	.55	.69	.61	.55	.67	.60	.54	.64	.58	.53	.62	.57	.53	.50
5.0	.63	.54	.47	.62	.53	.47	.60	.52	.47	.58	.51	.46	.56	.50	.46	.43
6.0	.57	.48	.41	.56	.47	.41	.54	.46	.41	.52	.46	.40	.51	.45	.40	.38
7.0	.51	.43	.36	.51	.42	.36	.49	.42	.36	.48	.41	.36	.46	.40	.36	.34
8.0	.47	.38	.33	.46	.38	.32	.45	.37	.32	.44	.37	.32	.42	.36	.32	.30
9.0	.43	.35	.29	.42	.35	.29	.41	.34	.29	.40	.34	.29	.39	.33	.29	.27
10.0	.40	.32	.27	.39	.32	.26	.38	.31	.26	.37	.31	.26	.36	.30	.26	.24



H(β) Range:-90 - 90DEG
H(β) Interval: 1.0DEG
Test Speed: HIGH
Temperature:25.3DEG
Operators:
Test Date:06 December 2023

V(B) Range:-75 - 75DEG
V(B) Interval: 5.0DEG
Test System:EVERFINE GO-2000A_V1 SYSTEM V2.0.366
Humidity:65.0%
Test Distance:7.500m [K=1.0413]
Remarks:

WEC AND CCEC

Test:U:220.07V I:0.1631A P:37.215W PF:0.9667 Freq:49.99Hz Lamp Flux:4148.98x1 lm		
NAME: GLM-DOR450D(3000K)	TYPE:LED	WEIGHT:
SPEC.:	DIM.:	SERIAL No.:1
MFR.: EVERFINE	SUR.:	Shielding Angle:

ρ_{cc}	80%			70%			50%			30%			10%			0
ρ_w	50%	30%	10%	50%	30%	10%	50%	30%	10%	50%	30%	10%	50%	30%	10%	0
ρ_{fc}	20%			20%			20%			20%			20%			0
RCR	RCR:Room Cavity Ratio						Wall Exitance Coefficients (WEC)									
0.0																
1.0	.300	.170	.054	.292	.167	.053	.279	.160	.051	.267	.154	.049	.256	.148	.048	
2.0	.287	.157	.048	.281	.155	.048	.269	.150	.046	.258	.145	.045	.248	.140	.044	
3.0	.267	.142	.043	.262	.140	.042	.251	.136	.041	.242	.133	.041	.233	.129	.040	
4.0	.247	.129	.038	.243	.127	.038	.233	.124	.037	.225	.121	.036	.217	.118	.036	
5.0	.229	.117	.034	.225	.115	.034	.217	.113	.033	.209	.110	.033	.202	.108	.032	
6.0	.213	.107	.031	.209	.106	.030	.202	.103	.030	.195	.101	.030	.189	.099	.029	
7.0	.198	.098	.028	.195	.097	.028	.188	.095	.027	.182	.093	.027	.177	.092	.027	
8.0	.185	.090	.025	.182	.090	.025	.176	.088	.025	.171	.087	.025	.166	.085	.025	
9.0	.174	.084	.023	.171	.083	.023	.166	.082	.023	.161	.081	.023	.156	.079	.023	
10.0	.163	.078	.022	.161	.078	.022	.156	.076	.022	.152	.075	.021	.148	.074	.021	

ρ_{cc}	80%			70%			50%			30%			10%			0
ρ_w	50%	30%	10%	50%	30%	10%	50%	30%	10%	50%	30%	10%	50%	30%	10%	0
ρ_{fc}	20%			20%			20%			20%			20%			0
RCR	RCR:Room Cavity Ratio						Ceiling Cavity Exitance Coefficients (CCEC)									
0.0	.190	.190	.190	.163	.163	.163	.111	.111	.111	.064	.064	.064	.020	.020	.020	
1.0	.180	.156	.135	.154	.134	.116	.105	.092	.080	.060	.053	.047	.019	.017	.015	
2.0	.172	.132	.099	.147	.114	.085	.101	.079	.059	.058	.046	.035	.019	.015	.011	
3.0	.164	.114	.075	.141	.099	.065	.096	.068	.045	.056	.040	.027	.018	.013	.009	
4.0	.156	.101	.059	.134	.087	.051	.092	.061	.036	.053	.036	.021	.017	.012	.007	
5.0	.149	.091	.047	.128	.078	.041	.088	.055	.029	.051	.032	.017	.016	.010	.006	
6.0	.142	.082	.039	.122	.071	.034	.084	.050	.024	.049	.029	.014	.016	.010	.005	
7.0	.135	.075	.033	.116	.065	.029	.080	.046	.021	.047	.027	.012	.015	.009	.004	
8.0	.129	.069	.029	.111	.060	.025	.077	.042	.018	.045	.025	.011	.014	.008	.004	
9.0	.123	.065	.025	.106	.056	.022	.073	.039	.016	.043	.023	.009	.014	.008	.003	
10.0	.117	.060	.022	.101	.052	.020	.070	.037	.014	.041	.022	.008	.013	.007	.003	

H(β) Range:-90 - 90DEG
H(β) Interval: 1.0DEG
Test Speed: HIGH
Temperature:25.3DEG
Operators:
Test Date:06 December 2023

V(B) Range:-75 - 75DEG
V(B) Interval: 5.0DEG
Test System:EVERFINE GO-2000A_V1 SYSTEM V2.0.366
Humidity:65.0%
Test Distance:7.500m [K=1.0413]
Remarks:

UGR(Unified Glare Rating) Table

Test:U:220.07V I:0.1631A P:37.215W PF:0.9667 Freq:49.99Hz Lamp Flux:4148.98x1 lm										
NAME: GLM-DOR450D(3000K)					TYPE:LED			WEIGHT:		
SPEC.:					DIM.:			SERIAL No.:1		
MFR.: EVERFINE					SUR.:			Shielding Angle:		
ceiling/cavity	0.7	0.7	0.5	0.5	0.3	0.7	0.7	0.5	0.5	0.3
walls	0.5	0.3	0.5	0.3	0.3	0.5	0.3	0.5	0.3	0.3
working plane	0.2	0.2	0.2	0.2	0.2	0.2	0.2	0.2	0.2	0.2
Room dimensions	Viewed crosswise					Viewed endwise				
x = 2H y = 2H	20.3	21.8	20.5	22.0	22.2	20.2	21.7	20.5	21.9	22.1
3H	21.8	23.2	22.1	23.5	23.7	21.7	23.1	22.0	23.4	23.6
4H	22.5	23.8	22.8	24.0	24.3	22.3	23.7	22.6	23.9	24.2
6H	22.9	24.2	23.3	24.5	24.8	22.4	23.6	22.7	23.9	24.2
8H	23.1	24.3	23.4	24.6	24.9	22.3	23.6	22.7	23.8	24.1
12H	23.2	24.3	23.5	24.6	24.9	22.3	23.5	22.6	23.7	24.1
4H 2H	20.9	22.2	21.2	22.5	22.7	20.8	22.1	21.1	22.4	22.7
3H	22.6	23.8	23.0	24.1	24.4	22.5	23.7	22.9	24.0	24.3
4H	23.4	24.5	23.8	24.8	25.1	23.3	24.3	23.7	24.7	25.0
6H	24.0	25.0	24.4	25.3	25.7	23.4	24.3	23.8	24.7	25.1
8H	24.2	25.1	24.6	25.5	25.8	23.3	24.2	23.8	24.6	25.0
12H	24.3	25.1	24.7	25.5	25.9	23.3	24.1	23.7	24.5	24.9
8H 4H	23.7	24.6	24.1	24.9	25.3	23.6	24.5	24.0	24.8	25.2
6H	24.5	25.2	24.9	25.6	26.0	23.7	24.5	24.2	24.9	25.3
8H	24.7	25.4	25.2	25.8	26.3	23.7	24.3	24.2	24.8	25.2
12H	24.9	25.5	25.4	25.9	26.4	23.7	24.2	24.1	24.7	25.1
12H 4H	23.7	24.5	24.1	24.8	25.3	23.6	24.4	24.0	24.8	25.2
6H	24.5	25.1	24.9	25.5	26.0	23.8	24.4	24.2	24.8	25.3
8H	24.8	25.3	25.2	25.8	26.2	23.7	24.3	24.2	24.7	25.2
Variations with the observer position at spacings:										
S = 1.0H	+ 0.1 / - 0.2					+ 0.2 / - 0.3				
1.5H	+ 0.2 / - 0.3					+ 0.1 / - 0.3				
2.0H	+ 0.2 / - 0.2					+ 0.2 / - 0.4				

CIE Pub.117, 4149 lm Total Lamp Luminous Flux Corrected (8log(F/F0) = 4.9)

H(β) Range:-90 - 90DEG	V(B) Range:-75 - 75DEG
H(β) Interval: 1.0DEG	V(B) Interval: 5.0DEG
Test Speed: HIGH	Test System:EVERFINE GO-2000A_V1 SYSTEM V2.0.366
Temperature:25.3DEG	Humidity:65.0%
Operators:	Test Distance:7.500m [K=1.0413]
Test Date:06 December 2023	Remarks:

UTILIZATION FACTORS TABLE

Test:U:220.07V I:0.1631A P:37.215W PF:0.9667 Freq:49.99Hz Lamp Flux:4148.98x1 lm		
NAME: GLM-DOR450D(3000K)	TYPE:LED	WEIGHT:
SPEC.:	DIM.:	SERIAL No.:1
MFR.: EVERFINE	SUR.:	Shielding Angle:

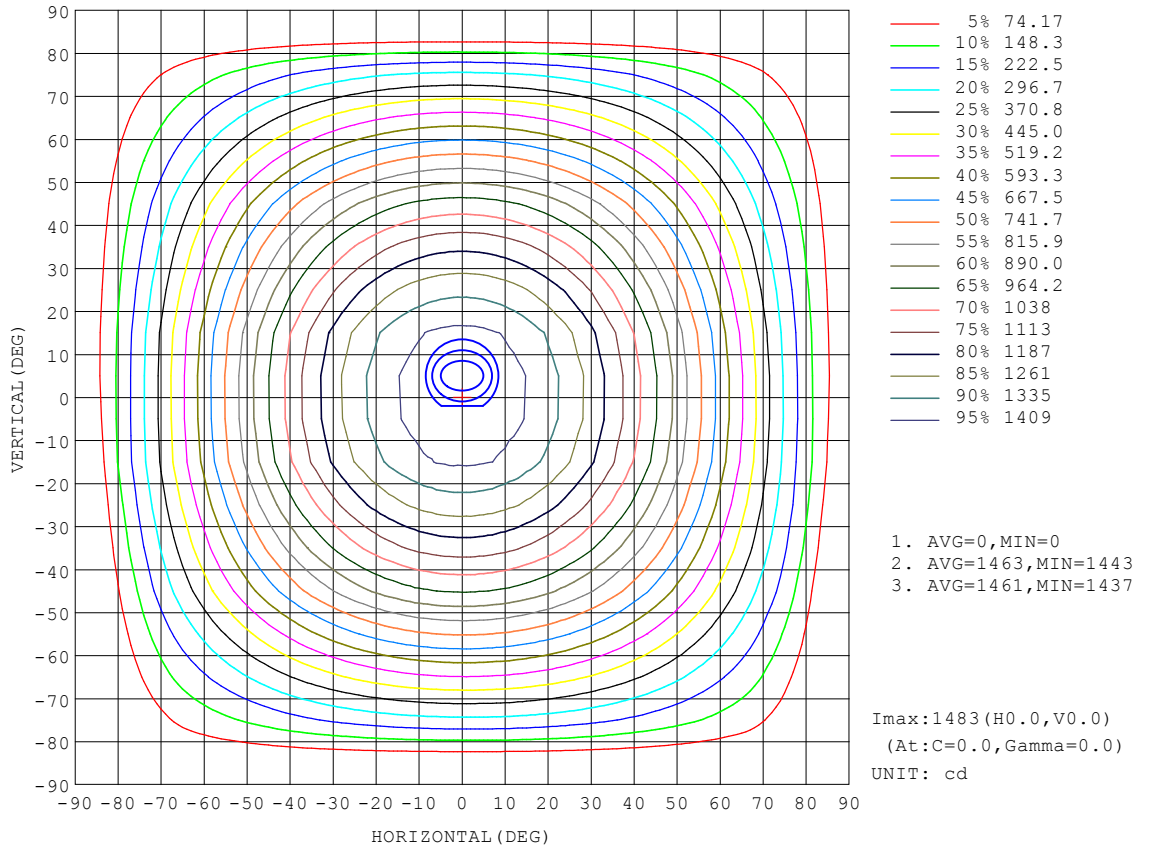
REFLECTANCE										
Ceiling	0.8	0.8	0.8	0.7	0.7	0.7	0.5	0.5	0.5	0
Walls	0.7	0.5	0.3	0.7	0.5	0.3	0.7	0.5	0.3	0
Working plane	0.2	0.2	0.2	0.2	0.2	0.2	0.2	0.2	0.2	0
ROOM INDEX	UTILIZATION FACTORS (PERCENT) k(RI) x RCR = 5									
k = 0.60	58	46	39	57	46	39	56	45	39	33
0.80	68	56	49	67	56	49	65	55	48	41
1.00	76	65	58	75	65	58	73	66	57	50
1.25	83	73	66	82	72	66	79	71	65	57
1.50	88	79	72	87	78	71	84	76	70	63
2.00	95	87	81	94	86	80	90	84	78	71
2.50	99	92	86	97	90	85	93	88	83	75
3.00	103	96	91	101	94	89	96	91	87	79
4.00	107	101	97	104	99	95	100	96	93	84
5.00	109	104	101	107	102	99	102	99	96	87
ROOM INDEX	UF(total)									Direct
According to DIN EN 13032-2 2004			Suspended				SHRNOM = 1.25			

H(β) Range:-90 - 90DEG
H(β) Interval: 1.0DEG
Test Speed: HIGH
Temperature:25.3DEG
Operators:
Test Date:06 December 2023

V(B) Range:-75 - 75DEG
V(B) Interval: 5.0DEG
Test System:EVERFINE GO-2000A_V1 SYSTEM V2.0.366
Humidity:65.0%
Test Distance:7.500m [K=1.0413]
Remarks:

ISOCANDELA DIAGRAM

Test:U:220.07V I:0.1631A P:37.215W PF:0.9667 Freq:49.99Hz Lamp Flux:4148.98x1 lm		
NAME: GLM-DOR450D(3000K)	TYPE:LED	WEIGHT:
SPEC.:	DIM.:	SERIAL No.:1
MFR.: EVERFINE	SUR.:	Shielding Angle:

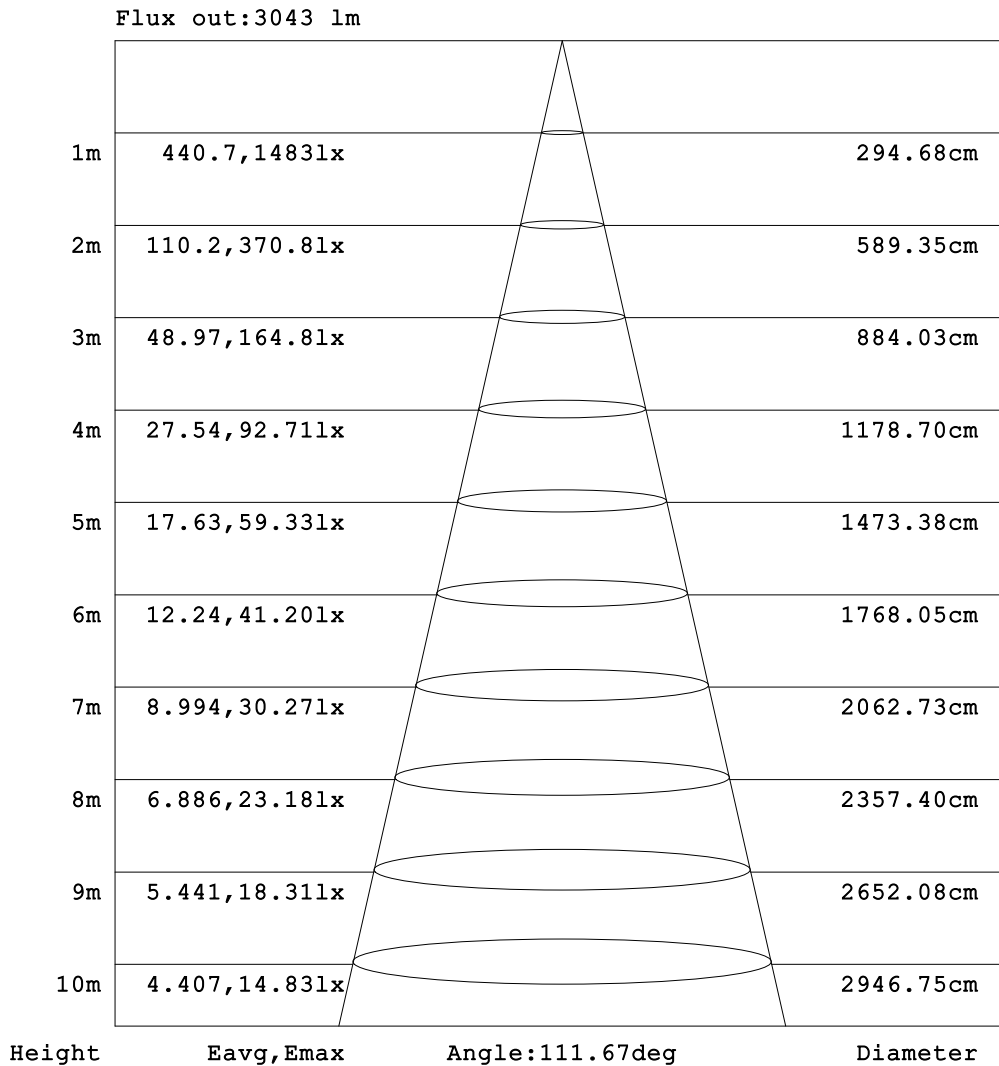


H(β) Range:-90 - 90DEG
 H(β) Interval: 1.0DEG
 Test Speed: HIGH
 Temperature:25.3DEG
 Operators:
 Test Date:06 December 2023

V(B) Range:-75 - 75DEG
 V(B) Interval: 5.0DEG
 Test System:EVERFINE GO-2000A_V1 SYSTEM V2.0.366
 Humidity:65.0%
 Test Distance:7.500m [K=1.0413]
 Remarks:

AAI Figure

Test:U:220.07V I:0.1631A P:37.215W PF:0.9667 Freq:49.99Hz Lamp Flux:4148.98x1 lm		
NAME: GLM-DOR450D(3000K)	TYPE:LED	WEIGHT:
SPEC.:	DIM.:	SERIAL No.:1
MFR.: EVERFINE	SUR.:	Shielding Angle:



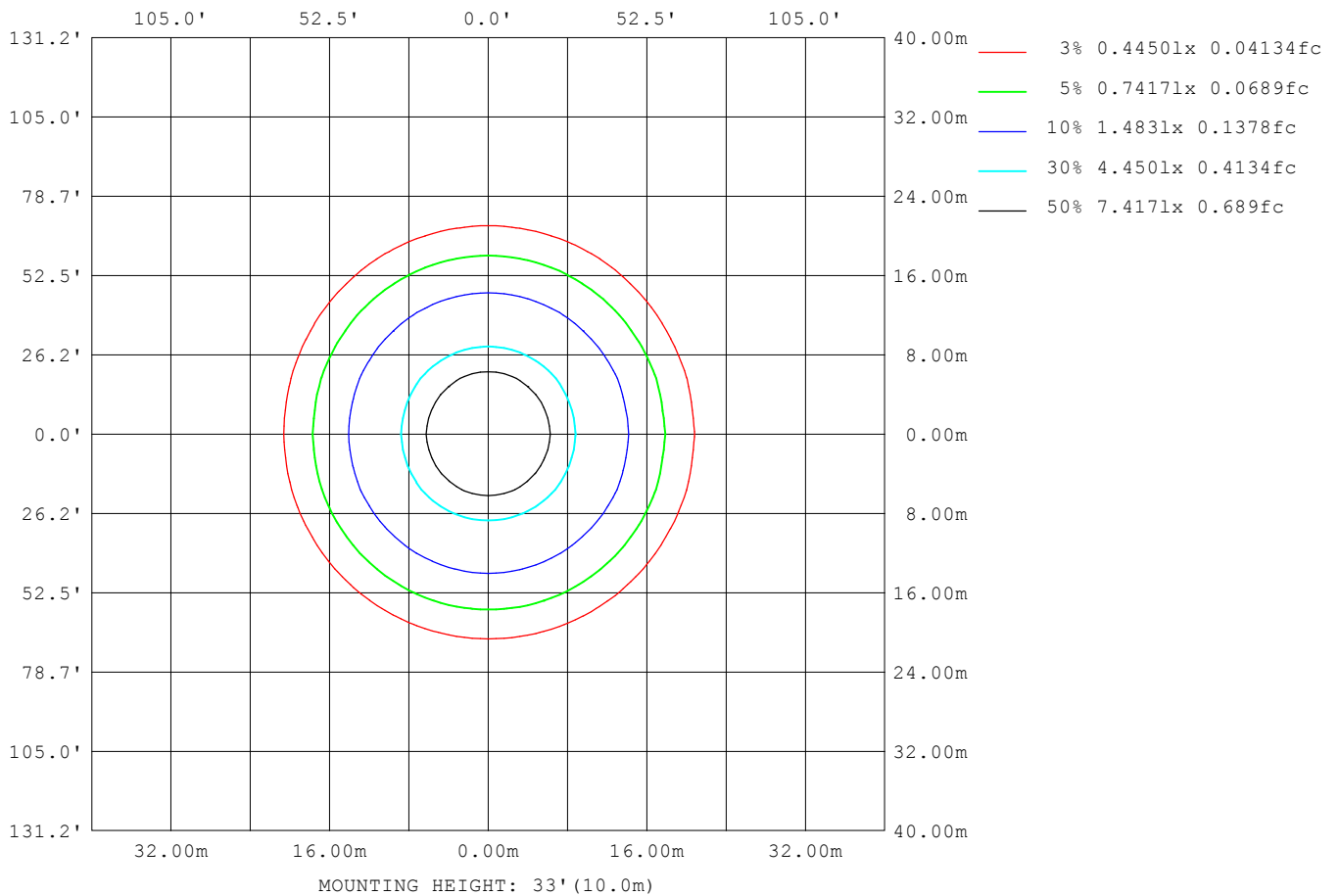
Note:The Curves indicate the illuminated area and the average illumination when the luminaire is at different distance.

H(β) Range:-90 - 90DEG
H(β) Interval: 1.0DEG
Test Speed: HIGH
Temperature:25.3DEG
Operators:
Test Date:06 December 2023

V(B) Range:-75 - 75DEG
V(B) Interval: 5.0DEG
Test System:EVERFINE GO-2000A_V1 SYSTEM V2.0.366
Humidity:65.0%
Test Distance:7.500m [K=1.0413]
Remarks:

ISOLUX DIAGRAM

Test:U:220.07V I:0.1631A P:37.215W PF:0.9667 Freq:49.99Hz Lamp Flux:4148.98x1 lm		
NAME: GLM-DOR450D(3000K)	TYPE:LED	WEIGHT:
SPEC.:	DIM.:	SERIAL No.:1
MFR.: EVERFINE	SUR.:	Shielding Angle:



H(β) Range:-90 - 90DEG
 H(β) Interval: 1.0DEG
 Test Speed: HIGH
 Temperature:25.3DEG
 Operators:
 Test Date:06 December 2023

V(B) Range:-75 - 75DEG
 V(B) Interval: 5.0DEG
 Test System:EVERFINE GO-2000A_V1 SYSTEM V2.0.366
 Humidity:65.0%
 Test Distance:7.500m [K=1.0413]
 Remarks:

LED Avg.L Report

Test:U:220.07V I:0.1631A P:37.215W PF:0.9667 Freq:49.99Hz Lamp Flux:4148.98x1 lm		
NAME: GLM-DOR450D(3000K)	TYPE:LED	WEIGHT:
SPEC.:	DIM.:	SERIAL No.:1
MFR.: EVERFINE	SUR.:	Shielding Angle:

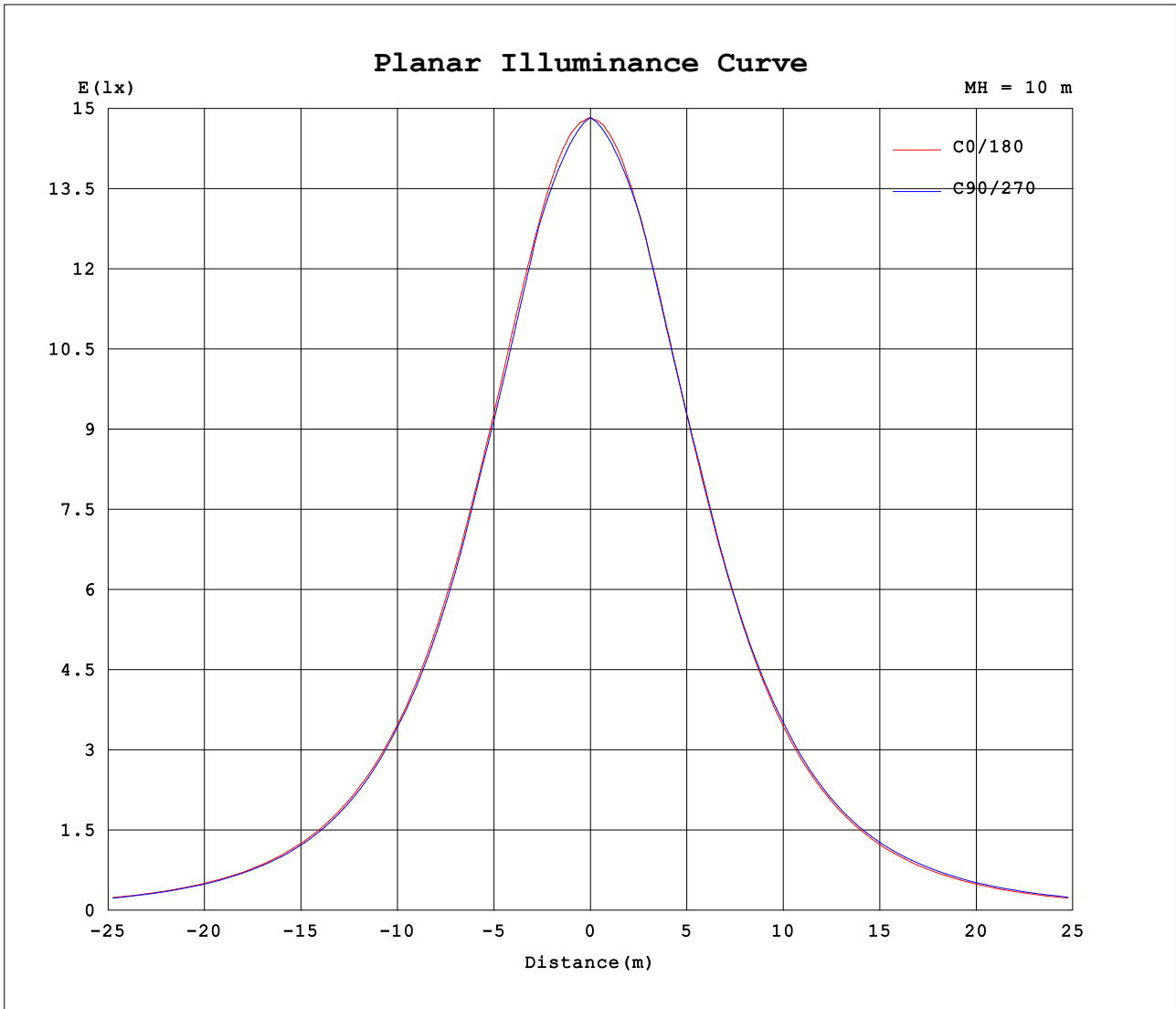
AvgL	cd/m2
L_0~180 (65) av	7748
L_0~180 (75) av	6852
L_0~180 (85) av	5103
L_90~270 (65) av	7885
L_90~270 (75) av	7169
L_90~270 (85) av	0
L_45 (65) av	7785
L_45 (75) av	7085
L_45 (85) av	0

Standard: GB/T 29293-2012

H(β) Range:-90 - 90DEG
H(β) Interval: 1.0DEG
Test Speed: HIGH
Temperature:25.3DEG
Operators:
Test Date:06 December 2023

V(B) Range:-75 - 75DEG
V(B) Interval: 5.0DEG
Test System:EVERFINE GO-2000A_V1 SYSTEM V2.0.366
Humidity:65.0%
Test Distance:7.500m [K=1.0413]
Remarks:

Planar Illuminance Curve



H(β) Range:-90 - 90DEG
H(β) Interval: 1.0DEG
Test Speed: HIGH
Temperature:25.3DEG
Operators:
Test Date:06 December 2023

V(B) Range:-75 - 75DEG
V(B) Interval: 5.0DEG
Test System:EVERFINE GO-2000A_V1 SYSTEM V2.0.366
Humidity:65.0%
Test Distance:7.500m [K=1.0413]
Remarks:

LUMINOUS DISTRIBUTION INTENSITY DATA

Test:U:220.07V I:0.1631A P:37.215W PF:0.9667 Freq:49.99Hz Lamp Flux:4148.98x1 lm		
NAME: GLM-DOR450D(3000K)	TYPE:LED	WEIGHT:
SPEC.:	DIM.:	SERIAL No.:1
MFR.: EVERFINE	SUR.:	Shielding Angle:

Table--1

UNIT: cd

C (DEG) γ (DEG)	0	5	10	15	20	25	30	35	40	45	50	55	60	65	70	75	80	85	90
0	1483	1483	1483	1483	1483	1483	1483	1483	1483	1483	1483	1483	1483	1483	1483	1483	1483	1483	1483
5	1477	1475	1473	1472	1470	1468	1467	1466	1465	1464	1464	1463	1462	1461	1461	1461	1462	1462	1462
10	1460	1456	1453	1450	1448	1446	1444	1443	1442	1442	1441	1441	1440	1440	1440	1440	1440	1441	1440
15	1426	1420	1416	1413	1411	1410	1409	1409	1408	1410	1412	1413	1415	1417	1417	1418	1420	1420	1419
20	1379	1373	1368	1365	1363	1362	1363	1366	1368	1373	1374	1368	1367	1364	1364	1362	1361	1361	1360
25	1320	1312	1307	1305	1305	1307	1311	1317	1311	1306	1304	1302	1302	1301	1300	1301	1301	1301	1301
30	1253	1244	1238	1236	1238	1241	1242	1237	1234	1233	1232	1233	1234	1237	1238	1240	1241	1242	1241
35	1170	1161	1157	1158	1163	1162	1157	1154	1154	1155	1159	1162	1159	1155	1154	1152	1152	1152	1151
40	1082	1072	1068	1072	1075	1067	1066	1067	1071	1074	1067	1065	1062	1062	1062	1061	1061	1061	1061
45	983	973	972	979	973	970	972	978	973	969	967	966	967	967	968	970	970	970	971
50	880	870	871	871	867	869	874	867	864	864	865	867	866	864	862	861	859	859	859
55	768	759	764	759	760	764	758	755	756	759	756	753	752	751	749	749	748	747	747
60	653	644	647	643	650	643	642	646	642	639	638	638	637	637	637	636	636	636	635
65	533	527	526	531	526	526	526	524	522	522	523	523	521	521	520	520	519	518	517
70	412	409	410	408	409	407	406	407	407	407	406	405	404	404	403	402	401	400	399
75	294	292	294	293	292	292	293	292	292	291	290	289	288	287	286	285	284	282	281
80	183	182	179	177	184	184	183	182	180	155	125	97.9	73.1	51.4	33.3	18.8	8.41	2.10	0.00
85	83.7	48.8	56.9	68.5	70.7	37.0	0.00	0.00	0.00	0.00	0.00	0.00	0.00	0.00	0.00	0.00	0.00	0.00	0.00
90	0.00	0.00	0.00	0.00	0.00	0.00	0.00	0.00	0.00	0.00	0.00	0.00	0.00	0.00	0.00	0.00	0.00	0.00	0.00

H(β) Range:-90 - 90DEG
H(β) Interval: 1.0DEG
Test Speed: HIGH
Temperature:25.3DEG
Operators:
Test Date:06 December 2023

V(B) Range:-75 - 75DEG
V(B) Interval: 5.0DEG
Test System:EVERFINE GO-2000A_V1 SYSTEM V2.0.366
Humidity:65.0%
Test Distance:7.500m [K=1.0413]
Remarks:

LUMINOUS DISTRIBUTION INTENSITY DATA

Test:U:220.07V I:0.1631A P:37.215W PF:0.9667 Freq:49.99Hz Lamp Flux:4148.98x1 lm		
NAME: GLM-DOR450D(3000K)	TYPE:LED	WEIGHT:
SPEC.:	DIM.:	SERIAL No.:1
MFR.: EVERFINE	SUR.:	Shielding Angle:

Table--2

UNIT: cd

C (DEG) γ (DEG)	95	100	105	110	115	120	125	130	135	140	145	150	155	160	165	170	175	180	185
0	1483	1483	1483	1483	1483	1483	1483	1483	1483	1483	1483	1483	1483	1483	1483	1483	1483	1483	1483
5	1461	1460	1460	1461	1462	1463	1463	1464	1464	1465	1466	1467	1468	1469	1470	1472	1473	1475	1474
10	1439	1441	1441	1441	1440	1440	1441	1440	1439	1441	1442	1443	1444	1446	1448	1450	1453	1456	1454
15	1419	1421	1418	1418	1417	1414	1413	1411	1409	1408	1407	1407	1408	1409	1411	1415	1419	1424	1420
20	1361	1361	1362	1362	1364	1366	1368	1372	1372	1369	1366	1363	1361	1361	1363	1366	1370	1376	1371
25	1300	1301	1300	1300	1300	1300	1301	1303	1306	1309	1316	1311	1305	1303	1303	1305	1310	1317	1311
30	1240	1241	1237	1237	1234	1232	1231	1231	1231	1232	1236	1242	1241	1236	1234	1235	1239	1247	1240
35	1150	1151	1151	1152	1153	1156	1160	1156	1152	1151	1151	1155	1161	1160	1153	1153	1157	1166	1158
40	1060	1060	1060	1059	1058	1060	1062	1063	1068	1065	1063	1060	1064	1071	1067	1063	1065	1074	1067
45	970	969	969	967	964	963	962	962	962	965	970	965	964	968	974	966	966	974	967
50	859	858	860	859	860	863	863	860	858	856	858	864	859	859	864	863	859	866	861
55	747	746	746	745	745	746	747	749	753	749	746	747	751	748	749	755	748	755	749
60	635	634	633	632	631	630	630	630	631	633	637	631	631	634	631	637	631	637	632
65	517	516	516	515	514	514	514	513	512	511	512	515	514	511	514	513	512	515	514
70	399	398	398	397	397	396	395	395	394	393	392	392	394	394	391	391	394	392	394
75	281	280	280	280	280	279	280	279	279	278	277	276	275	275	276	270	274	273	275
80	2.09	8.29	18.5	32.5	49.9	70.5	93.8	119	146	166	167	167	166	162	151	143	146	161	162
85	0.00	0.00	0.00	0.00	0.00	0.00	0.00	0.00	0.00	0.00	0.00	0.00	31.2	54.1	48.9	36.9	28.7	58.6	64.2
90	0.00	0.00	0.00	0.00	0.00	0.00	0.00	0.00	0.00	0.00	0.00	0.00	0.00	0.00	0.00	0.00	0.00	0.00	0.00

H(β) Range:-90 - 90DEG
H(β) Interval: 1.0DEG
Test Speed: HIGH
Temperature:25.3DEG
Operators:
Test Date:06 December 2023

V(B) Range:-75 - 75DEG
V(B) Interval: 5.0DEG
Test System:EVERFINE GO-2000A_V1 SYSTEM V2.0.366
Humidity:65.0%
Test Distance:7.500m [K=1.0413]
Remarks:

LUMINOUS DISTRIBUTION INTENSITY DATA

Test:U:220.07V I:0.1631A P:37.215W PF:0.9667 Freq:49.99Hz Lamp Flux:4148.98x1 lm		
NAME: GLM-DOR450D(3000K)	TYPE:LED	WEIGHT:
SPEC.:	DIM.:	SERIAL No.:1
MFR.: EVERFINE	SUR.:	Shielding Angle:

Table--3

UNIT: cd

C (DEG) γ (DEG)	190	195	200	205	210	215	220	225	230	235	240	245	250	255	260	265	270	275	280
0	1483	1483	1483	1483	1483	1483	1483	1483	1483	1483	1483	1483	1483	1483	1483	1483	1483	1483	1483
5	1472	1471	1470	1469	1468	1468	1467	1466	1465	1465	1464	1464	1464	1463	1463	1464	1465	1464	1464
10	1451	1449	1447	1446	1445	1445	1445	1444	1444	1444	1445	1445	1445	1445	1446	1446	1446	1446	1445
15	1416	1414	1412	1411	1412	1412	1413	1415	1417	1419	1422	1423	1425	1426	1427	1428	1427	1427	1427
20	1368	1366	1366	1367	1368	1372	1376	1380	1381	1378	1376	1375	1373	1373	1372	1372	1371	1372	1372
25	1308	1307	1308	1312	1317	1324	1319	1316	1314	1313	1313	1314	1314	1315	1315	1316	1315	1315	1315
30	1237	1238	1242	1249	1250	1246	1244	1243	1244	1246	1248	1252	1253	1256	1258	1259	1259	1259	1259
35	1156	1159	1166	1168	1163	1163	1164	1167	1171	1176	1174	1173	1173	1171	1171	1172	1171	1171	1172
40	1066	1071	1078	1073	1072	1075	1080	1083	1082	1080	1080	1080	1081	1082	1083	1083	1083	1083	1082
45	969	978	973	973	976	984	981	980	980	983	985	988	990	993	994	995	995	995	993
50	867	869	866	870	876	873	874	877	881	885	886	886	886	886	885	886	886	885	885
55	758	754	756	762	760	762	767	773	772	772	772	773	774	775	775	776	777	776	776
60	640	636	643	641	645	653	652	652	654	656	658	661	663	665	666	667	667	667	666
65	515	519	519	524	529	529	532	535	538	542	544	545	546	547	549	549	549	548	548
70	393	396	402	405	406	410	414	417	420	423	425	427	428	429	430	431	431	430	430
75	276	281	283	286	290	294	298	301	304	306	308	309	311	312	312	312	312	312	311
80	165	169	173	176	180	182	185	163	133	105	79.0	55.9	36.4	20.7	9.28	2.33	0.00	2.33	9.25
85	66.4	70.4	67.3	34.6	0.00	0.00	0.00	0.00	0.00	0.00	0.00	0.00	0.00	0.00	0.00	0.00	0.00	0.00	0.00
90	0.00	0.00	0.00	0.00	0.00	0.00	0.00	0.00	0.00	0.00	0.00	0.00	0.00	0.00	0.00	0.00	0.00	0.00	0.00

H(β) Range:-90 - 90DEG
H(β) Interval: 1.0DEG
Test Speed: HIGH
Temperature:25.3DEG
Operators:
Test Date:06 December 2023

V(B) Range:-75 - 75DEG
V(B) Interval: 5.0DEG
Test System:EVERFINE GO-2000A_V1 SYSTEM V2.0.366
Humidity:65.0%
Test Distance:7.500m [K=1.0413]
Remarks:

LUMINOUS DISTRIBUTION INTENSITY DATA

Test:U:220.07V I:0.1631A P:37.215W PF:0.9667 Freq:49.99Hz Lamp Flux:4148.98x1 lm		
NAME: GLM-DOR450D(3000K)	TYPE:LED	WEIGHT:
SPEC.:	DIM.:	SERIAL No.:1
MFR.: EVERFINE	SUR.:	Shielding Angle:

Table--4

UNIT: cd

C (DEG) γ (DEG)	285	290	295	300	305	310	315	320	325	330	335	340	345	350	355				
0	1483	1483	1483	1483	1483	1483	1483	1483	1483	1483	1483	1483	1483	1483	1483				
5	1464	1463	1463	1464	1466	1466	1466	1467	1467	1468	1470	1471	1472	1474	1476				
10	1446	1445	1445	1445	1445	1444	1444	1445	1445	1447	1448	1449	1451	1454	1457				
15	1426	1425	1422	1420	1419	1418	1415	1414	1413	1412	1413	1414	1415	1418	1421				
20	1373	1373	1374	1376	1378	1381	1381	1375	1371	1368	1367	1367	1368	1370	1374				
25	1315	1314	1314	1314	1314	1314	1315	1319	1322	1315	1311	1310	1309	1310	1313				
30	1256	1254	1252	1249	1246	1244	1243	1243	1246	1249	1247	1243	1239	1240	1245				
35	1172	1172	1173	1175	1177	1172	1168	1164	1163	1165	1167	1166	1160	1158	1162				
40	1082	1081	1080	1080	1081	1083	1086	1082	1076	1073	1074	1077	1073	1069	1072				
45	992	990	987	985	983	982	982	984	988	979	975	976	981	973	974				
50	885	885	885	885	884	881	877	876	877	881	875	871	873	872	870				
55	775	773	773	772	771	771	773	768	764	765	769	763	760	764	759				
60	665	663	661	659	657	655	654	653	654	649	648	652	646	647	644				
65	547	546	546	544	543	540	537	534	533	533	530	528	531	526	526				
70	429	428	426	425	424	422	420	419	415	412	410	409	408	408	407				
75	310	309	308	307	306	304	302	300	299	297	294	292	291	291	289				
80	20.6	36.2	55.7	78.6	105	133	163	187	186	185	183	182	179	179	178				
85	0.00	0.00	0.00	0.00	0.00	0.00	0.00	0.00	0.00	0.00	0.00	36.3	72.0	77.1	76.9	78.7			
90	0.00	0.00	0.00	0.00	0.00	0.00	0.00	0.00	0.00	0.00	0.00	0.00	0.00	0.00	0.00				

H(β) Range:-90 - 90DEG
H(β) Interval: 1.0DEG
Test Speed: HIGH
Temperature:25.3DEG
Operators:
Test Date:06 December 2023

V(B) Range:-75 - 75DEG
V(B) Interval: 5.0DEG
Test System:EVERFINE GO-2000A_V1 SYSTEM V2.0.366
Humidity:65.0%
Test Distance:7.500m [K=1.0413]
Remarks: