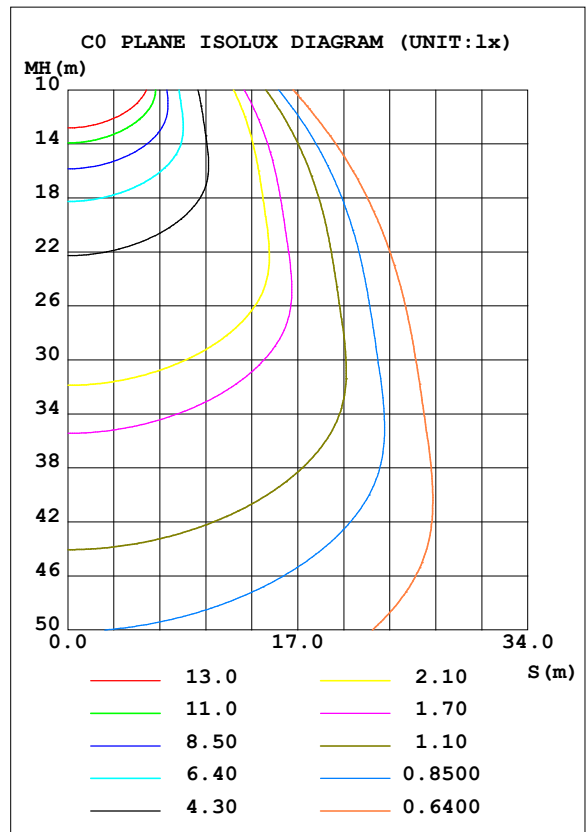
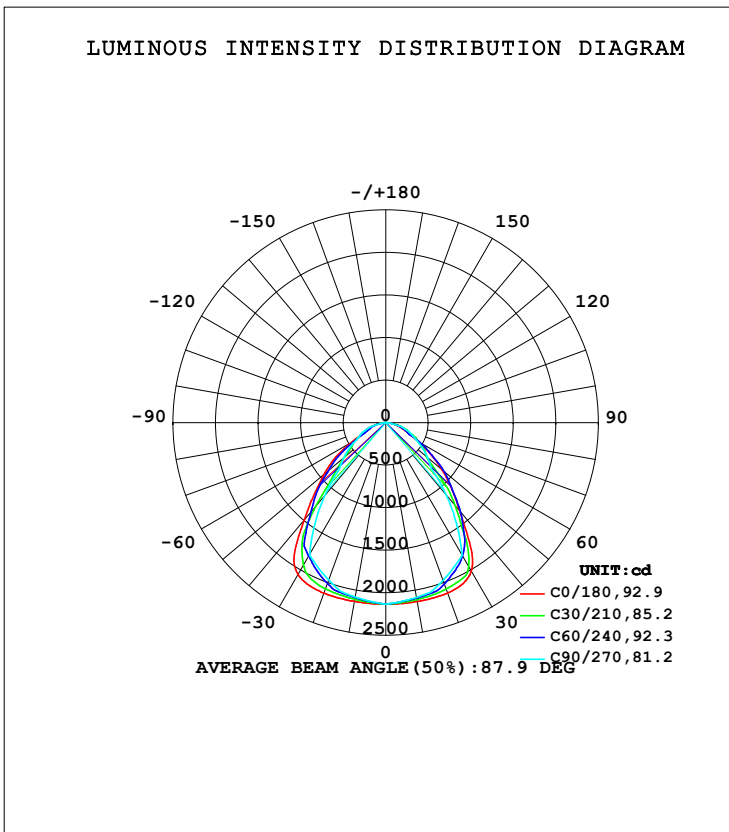


LUMINAIRE PHOTOMETRIC TEST REPORT

Test:U:221.11V I:0.1770A P:37.127W PF:0.9721 Freq:49.99Hz Lamp Flux:4513.81x1 lm		
NAME: GLM-SPL6060-36W-E	TYPE:LED	WEIGHT:
SPEC.:	DIM.:	SERIAL No.:1
MFR.: EVERFINE	SUR.:	Shielding Angle:

DATA OF LAMP		PHOTOMETRIC DATA Eff: 121.58 lm/W			
MODEL		I _{max} (cd)	2135	S/MH (C0/180)	1.30
NOMINAL POWER (W)		LOR (%)	100.0	S/MH (C90/270)	1.16
RATED VOLTAGE (V)	220.0	TOTAL FLUX (lm)	4513.8	<input type="checkbox"/> UP, DN (C0-180)	0.0, 50.0
NOMINAL FLUX (lm)	4513.81	CIE CLASS	DIRECT	<input type="checkbox"/> UP, DN (C180-360)	0.0, 50.0
LAMPS INSIDE	1	<input type="checkbox"/> up (%)	0.0	CIBSE SHR NOM	1.25
TEST VOLTAGE (V)	220	<input type="checkbox"/> down (%)	100.0	CIBSE SHR MAX	1.30



H(□) Range:-90 - 90DEG
 H(□) Interval: 1.0DEG
 Test Speed: HIGH
 Temperature:25.3DEG
 Operators:
 Test Date:2021-08-11

V(B) Range:-75 - 75DEG
 V(B) Interval: 5.0DEG
 Test System:EVERFINE GO-2000B_V1 SYSTEM V2.0.366
 Humidity:65.0%
 Test Distance:7.500m [K=1.0267]
 Remarks:

ZONAL FLUX DIAGRAM

ZONAL FLUX DIAGRAM:

mm	C0	C45	C90	C135	C180	C225	C270	C315	mm	□ zone	□ total	%lum, lamp
10	2134	2102	2085	2100	2133	2096	2081	2098	0- 10	201.7	201.7	4.47,4.47
20	2130	2069	1973	2065	2132	2059	1967	2060	10- 20	589.4	791.1	17.5,17.5
30	2014	1819	1797	1819	2062	1829	1794	1840	20- 30	912.2	1703	37.7,37.7
40	1352	1277	1105	1335	1491	1364	1114	1321	30- 40	1006	2709	60,60
50	866.2	729.6	645.1	785.4	947.8	775.9	645.2	716.8	40- 50	765.1	3474	77,77
60	433.1	438.3	417.4	440.2	475.1	413.6	386.8	418.1	50- 60	523.6	3997	88.6,88.6
70	213.6	265.1	264.8	249.1	238.9	235.5	248.1	253.2	60- 70	322.1	4320	95.7,95.7
80	89.44	115.3	0	106.8	88.87	89.63	0	102.9	70- 80	176.4	4496	99.6,99.6
90	0	0	0	0	0	0	0	0	80- 90	17.87	4514	100,100
100									90-100			
110									100-110			
120									110-120			
130									120-130			
140									130-140			
150									140-150			
160									150-160			
170									160-170			
180									170-180			
DEG	LUMINOUS INTENSITY:cd									UNIT:lm		

Conical surface Flux(90deg): 3126.8 lm

%lum = 69.3%

%lamp = 69.3%

Conical surface Flux(120deg): 3997.5 lm

%lum = 88.6%

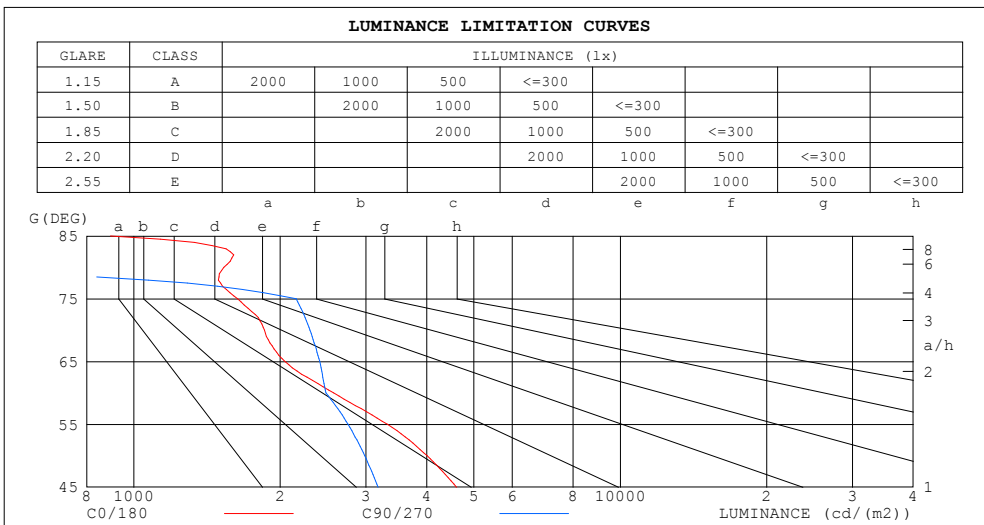
%lamp = 88.6%

H(□) Range:-90 - 90DEG
H(□) Interval: 1.0DEG
Test Speed: HIGH
Temperature:25.3DEG
Operators:
Test Date:2021-08-11

V(B) Range:-75 - 75DEG
V(B) Interval: 5.0DEG
Test System:EVERFINE GO-2000B_V1 SYSTEM V2.0.366
Humidity:65.0%
Test Distance:7.500m [K=1.0267]
Remarks:

LUMINANCE LIMITATION CURVES

Test:U:221.11V I:0.1770A P:37.127W PF:0.9721 Freq:49.99Hz Lamp Flux:4513.81x1 lm		
NAME: GLM-SPL6060-36W-E	TYPE:LED	WEIGHT:
SPEC.:	DIM.:	SERIAL No.:1
MFR.: EVERFINE	SUR.:	Shielding Angle:



LUMINANCE cd/(m2)		
G (DEG)	C0/180	C90/270
85	895	0
80	1531	0
75	1634	2155
70	1857	2302
65	2045	2412
60	2575	2482
55	3321	2758
50	4006	2983
45	4610	3178

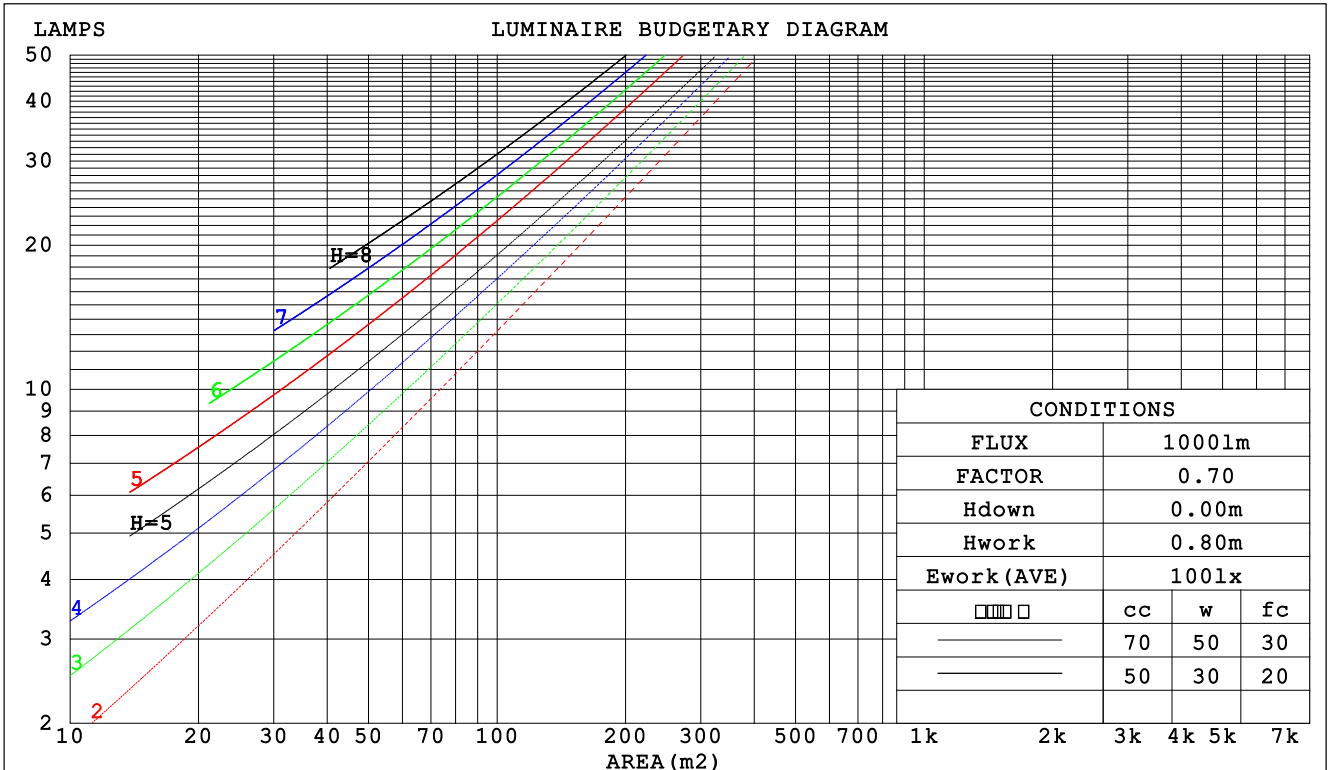
H(□) Range:-90 - 90DEG
H(□) Interval: 1.0DEG
Test Speed: HIGH
Temperature:25.3DEG
Operators:
Test Date:2021-08-11

V(B) Range:-75 - 75DEG
V(B) Interval: 5.0DEG
Test System:EVERFINE GO-2000B_V1 SYSTEM V2.0.366
Humidity:65.0%
Test Distance:7.500m [K=1.0267]
Remarks:

CU AND LUMINAIRE BUDGETARY ESTIMATE DIAGRAM

Test:U:221.11V I:0.1770A P:37.127W PF:0.9721 Freq:49.99Hz Lamp Flux:4513.81x1 lm		
NAME: GLM-SPL6060-36W-E	TYPE:LED	WEIGHT:
SPEC.:	DIM.:	SERIAL No.:1
MFR.: EVERFINE	SUR.:	Shielding Angle:

□cc	80%			70%			50%			30%			10%			0
□w	50%	30%	10%	50%	30%	10%	50%	30%	10%	50%	30%	10%	50%	30%	10%	0
□fc	20%			20%			20%			20%			20%			0
RCR	RCR:Room Cavity Ratio						Coefficients of Utilization(CU)									
0.0	1.19	1.19	1.19	1.16	1.16	1.16	1.11	1.11	1.11	1.06	1.06	1.06	1.02	1.02	1.02	1.00
1.0	1.07	1.03	.00	1.04	1.01	.98	1.00	.98	.95	.96	.94	.92	.93	.91	.90	.88
2.0	.95	.89	.84	.93	.88	.83	.90	.85	.82	.87	.83	.80	.84	.81	.78	.76
3.0	.85	.78	.72	.84	.77	.72	.81	.75	.71	.78	.73	.69	.76	.72	.68	.66
4.0	.77	.69	.63	.75	.68	.63	.73	.67	.62	.71	.65	.61	.69	.64	.60	.58
5.0	.70	.61	.56	.68	.61	.55	.66	.60	.55	.65	.59	.54	.63	.58	.54	.52
6.0	.63	.55	.49	.62	.55	.49	.61	.54	.49	.59	.53	.48	.58	.52	.48	.46
7.0	.58	.50	.44	.57	.50	.44	.56	.49	.44	.54	.48	.44	.53	.48	.43	.42
8.0	.53	.45	.40	.53	.45	.40	.51	.45	.40	.50	.44	.40	.49	.43	.39	.38
9.0	.49	.42	.36	.49	.41	.36	.48	.41	.36	.47	.40	.36	.46	.40	.36	.34
10.0	.46	.38	.33	.45	.38	.33	.44	.38	.33	.43	.37	.33	.42	.37	.33	.31



H(□) Range:-90 - 90DEG
H(□) Interval: 1.0DEG
Test Speed: HIGH
Temperature:25.3DEG
Operators:
Test Date:2021-08-11

V(B) Range:-75 - 75DEG
V(B) Interval: 5.0DEG
Test System:EVERFINE GO-2000B_V1 SYSTEM V2.0.366
Humidity:65.0%
Test Distance:7.500m [K=1.0267]
Remarks:

WEC AND CCEC

Test:U:221.11V I:0.1770A P:37.127W PF:0.9721 Freq:49.99Hz Lamp Flux:4513.81x1 lm		
NAME: GLM-SPL6060-36W-E	TYPE:LED	WEIGHT:
SPEC.:	DIM.:	SERIAL No.:1
MFR.: EVERFINE	SUR.:	Shielding Angle:

<input type="checkbox"/> cc	80%	70%	50%	30%	10%	0
<input type="checkbox"/> w	50% 30% 10%	50% 30% 10%	50% 30% 10%	50% 30% 10%	50% 30% 10%	0
<input type="checkbox"/> fc	20%	20%	20%	20%	20%	0
RCR	RCR:Room Cavity Ratio		Wall Exitance Coefficients (WEC)			
0.0						
1.0	.255 .145 .046	.248 .142 .045	.235 .135 .043	.223 .129 .041	.212 .123 .040	
2.0	.246 .135 .041	.240 .132 .041	.229 .127 .040	.219 .123 .038	.209 .118 .037	
3.0	.232 .124 .037	.227 .122 .037	.217 .118 .036	.208 .114 .035	.200 .111 .034	
4.0	.218 .113 .033	.213 .112 .033	.205 .108 .032	.196 .106 .032	.189 .103 .031	
5.0	.204 .104 .030	.200 .103 .030	.192 .100 .029	.185 .098 .029	.178 .095 .029	
6.0	.192 .096 .027	.188 .095 .027	.181 .093 .027	.175 .091 .027	.169 .089 .026	
7.0	.180 .089 .025	.177 .088 .025	.171 .086 .025	.165 .085 .025	.160 .083 .024	
8.0	.170 .083 .023	.167 .082 .023	.161 .081 .023	.156 .079 .023	.151 .078 .023	
9.0	.160 .078 .022	.158 .077 .022	.153 .076 .021	.148 .074 .021	.144 .073 .021	
10.0	.152 .073 .020	.149 .072 .020	.145 .071 .020	.141 .070 .020	.137 .069 .020	

<input type="checkbox"/> cc	80%	70%	50%	30%	10%	0
<input type="checkbox"/> w	50% 30% 10%	50% 30% 10%	50% 30% 10%	50% 30% 10%	50% 30% 10%	0
<input type="checkbox"/> fc	20%	20%	20%	20%	20%	0
RCR	RCR:Room Cavity Ratio		Ceiling Cavity Exitance Coefficients (CCEC)			
0.0	.190 .190 .190	.163 .163 .163	.111 .111 .111	.064 .064 .064	.020 .020 .020	
1.0	.177 .157 .139	.151 .134 .119	.103 .092 .083	.059 .054 .048	.019 .017 .016	
2.0	.166 .132 .103	.142 .114 .089	.098 .079 .062	.056 .046 .037	.018 .015 .012	
3.0	.157 .114 .080	.135 .098 .069	.093 .068 .048	.053 .040 .029	.017 .013 .009	
4.0	.149 .100 .063	.128 .087 .055	.088 .060 .039	.051 .035 .023	.016 .012 .007	
5.0	.142 .090 .051	.122 .077 .044	.084 .054 .031	.049 .032 .019	.016 .010 .006	
6.0	.135 .081 .042	.116 .070 .037	.080 .049 .026	.046 .029 .015	.015 .009 .005	
7.0	.128 .074 .036	.110 .064 .031	.076 .045 .022	.044 .026 .013	.014 .009 .004	
8.0	.122 .068 .031	.105 .059 .027	.073 .041 .019	.042 .024 .011	.014 .008 .004	
9.0	.117 .063 .027	.101 .055 .023	.070 .038 .017	.041 .023 .010	.013 .007 .003	
10.0	.112 .059 .024	.096 .051 .021	.067 .036 .015	.039 .021 .009	.013 .007 .003	

H(□) Range:-90 - 90DEG
H(□) Interval: 1.0DEG
Test Speed: HIGH
Temperature:25.3DEG
Operators:
Test Date:2021-08-11

V(B) Range:-75 - 75DEG
V(B) Interval: 5.0DEG
Test System:EVERFINE GO-2000B_V1 SYSTEM V2.0.366
Humidity:65.0%
Test Distance:7.500m [K=1.0267]
Remarks:

UGR(Unified Glare Rating) Table

Test:U:221.11V I:0.1770A P:37.127W PF:0.9721 Freq:49.99Hz Lamp Flux:4513.81x1 lm										
NAME: GLM-SPL6060-36W-E					TYPE:LED			WEIGHT:		
SPEC.:					DIM.:			SERIAL No.:1		
MFR.: EVERFINE					SUR.:			Shielding Angle:		
ceiling/cavity	0.7	0.7	0.5	0.5	0.3	0.7	0.7	0.5	0.5	0.3
walls	0.5	0.3	0.5	0.3	0.3	0.5	0.3	0.5	0.3	0.3
working plane	0.2	0.2	0.2	0.2	0.2	0.2	0.2	0.2	0.2	0.2
Room dimensions	Viewed crosswise					Viewed endwise				
x = 2H y = 2H	16.1	17.4	16.3	17.6	17.8	16.0	17.4	16.3	17.6	17.8
3H	16.9	18.1	17.2	18.4	18.6	17.1	18.3	17.4	18.5	18.8
4H	17.3	18.4	17.6	18.7	18.9	17.6	18.7	17.9	19.0	19.2
6H	17.5	18.6	17.9	18.9	19.2	17.6	18.7	17.9	19.0	19.2
8H	17.6	18.6	17.9	18.9	19.2	17.6	18.6	17.9	18.9	19.2
12H	17.6	18.6	17.9	18.9	19.2	17.5	18.5	17.8	18.8	19.1
4H 2H	16.4	17.6	16.7	17.8	18.1	16.3	17.5	16.7	17.8	18.0
3H	17.6	18.6	17.9	18.9	19.2	17.6	18.6	17.9	18.9	19.2
4H	18.1	19.0	18.4	19.3	19.6	18.2	19.1	18.5	19.4	19.7
6H	18.5	19.3	18.9	19.6	20.0	18.3	19.1	18.7	19.4	19.8
8H	18.6	19.3	19.0	19.7	20.1	18.2	19.0	18.6	19.3	19.7
12H	18.6	19.3	19.0	19.7	20.1	18.2	18.9	18.6	19.3	19.7
8H 4H	18.3	19.1	18.7	19.4	19.8	18.4	19.2	18.8	19.5	19.9
6H	18.8	19.4	19.3	19.8	20.3	18.5	19.2	19.0	19.6	20.0
8H	19.0	19.5	19.5	20.0	20.4	18.5	19.0	18.9	19.5	19.9
12H	19.1	19.5	19.6	20.0	20.5	18.4	18.9	18.9	19.4	19.8
12H 4H	18.3	19.0	18.7	19.3	19.7	18.4	19.1	18.8	19.5	19.9
6H	18.8	19.4	19.3	19.8	20.2	18.5	19.1	19.0	19.5	20.0
8H	19.0	19.5	19.5	19.9	20.4	18.5	19.0	19.0	19.4	19.9
Variations with the observer position at spacings:										
S = 1.0H	+ 0.4 / - 0.5					+ 0.6 / - 0.6				
1.5H	+ 0.3 / - 0.2					+ 0.4 / - 0.9				
2.0H	+ 0.8 / - 0.8					+ 0.8 / - 1.0				

CIE Pub.117, 4514 lm Total Lamp Luminous Flux Corrected (8log(F/F0) = 5.2)

H(□) Range:-90 - 90DEG	V(B) Range:-75 - 75DEG
H(□) Interval: 1.0DEG	V(B) Interval: 5.0DEG
Test Speed: HIGH	Test System:EVERFINE GO-2000B_V1 SYSTEM V2.0.366
Temperature:25.3DEG	Humidity:65.0%
Operators:	Test Distance:7.500m [K=1.0267]
Test Date:2021-08-11	Remarks:

UTILIZATION FACTORS TABLE

Test:U:221.11V I:0.1770A P:37.127W PF:0.9721 Freq:49.99Hz Lamp Flux:4513.81x1 lm		
NAME: GLM-SPL6060-36W-E	TYPE:LED	WEIGHT:
SPEC.:	DIM.:	SERIAL No.:1
MFR.: EVERFINE	SUR.:	Shielding Angle:

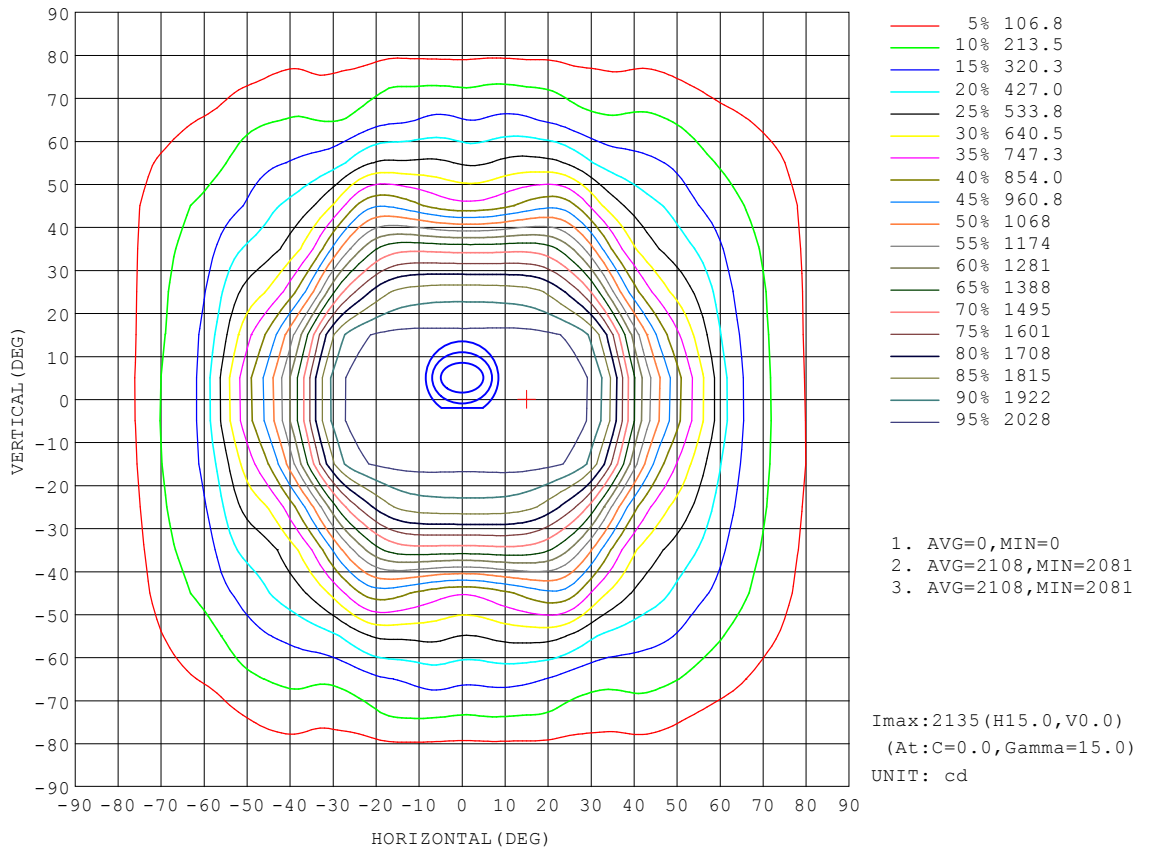
REFLECTANCE										
Ceiling	0.8	0.8	0.8	0.7	0.7	0.7	0.5	0.5	0.5	0
Walls	0.7	0.5	0.3	0.7	0.5	0.3	0.7	0.5	0.3	0
Working plane	0.2	0.2	0.2	0.2	0.2	0.2	0.2	0.2	0.2	0
ROOM INDEX	UTILIZATION FACTORS (PERCENT) $k(RI) \times RCR = 5$									
k = 0.60	67	57	51	66	56	50	65	56	50	45
0.80	76	66	60	75	66	60	74	65	60	54
1.00	84	75	69	83	74	68	81	75	68	62
1.25	90	82	76	89	81	75	87	80	75	68
1.50	95	87	81	93	86	80	90	84	79	73
2.00	100	93	88	98	92	87	95	90	86	79
2.50	103	97	92	101	96	91	98	93	89	82
3.00	106	100	96	104	99	95	100	96	93	85
4.00	109	105	101	107	103	100	103	100	97	89
5.00	111	107	104	109	105	102	104	102	99	91
ROOM INDEX	UF(total)									Direct
According to DIN EN 13032-2 2004			Suspended				SHRNOM = 1.25			

H(□) Range:-90 - 90DEG
H(□) Interval: 1.0DEG
Test Speed: HIGH
Temperature:25.3DEG
Operators:
Test Date:2021-08-11

V(B) Range:-75 - 75DEG
V(B) Interval: 5.0DEG
Test System:EVERFINE GO-2000B_V1 SYSTEM V2.0.366
Humidity:65.0%
Test Distance:7.500m [K=1.0267]
Remarks:

ISOCANDELA DIAGRAM

Test:U:221.11V I:0.1770A P:37.127W PF:0.9721 Freq:49.99Hz Lamp Flux:4513.81x1 lm		
NAME: GLM-SPL6060-36W-E	TYPE:LED	WEIGHT:
SPEC.:	DIM.:	SERIAL No.:1
MFR.: EVERFINE	SUR.:	Shielding Angle:

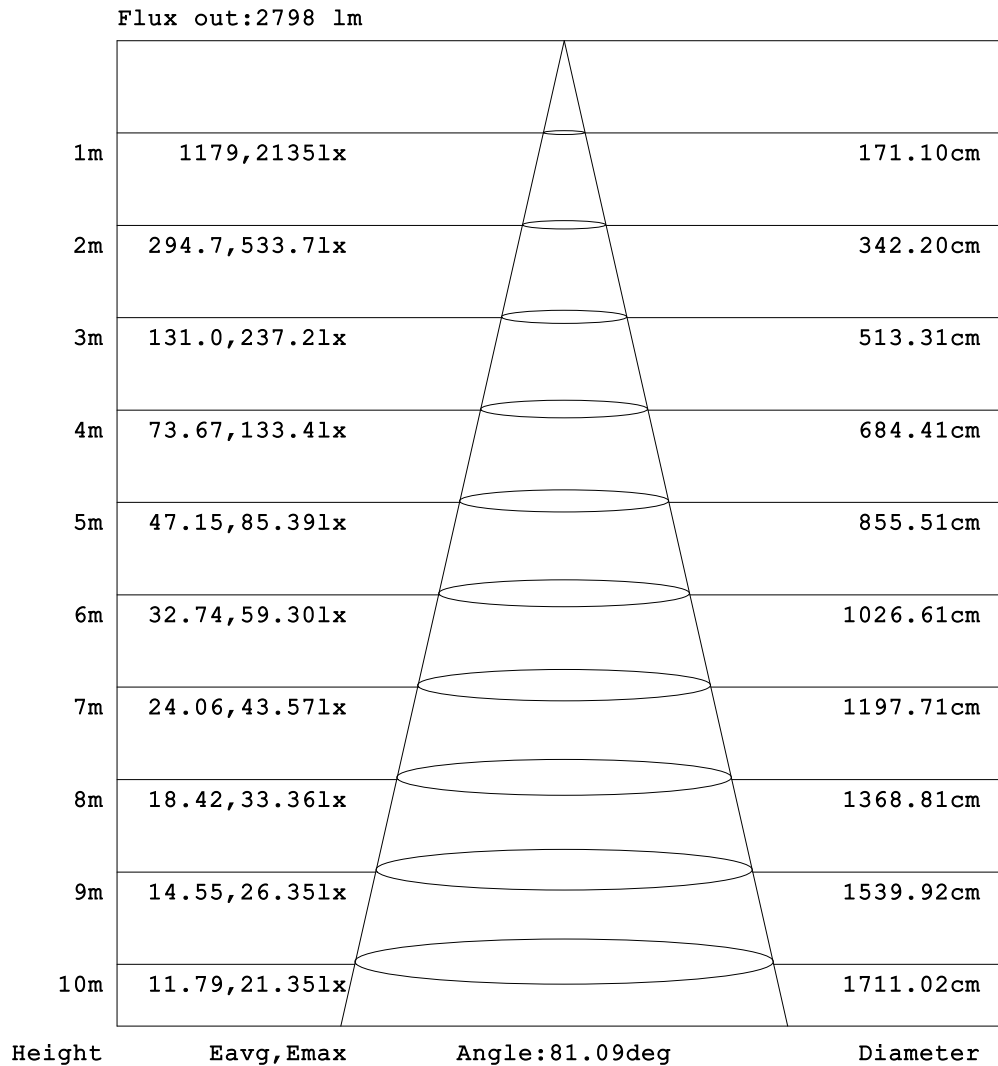


H(□) Range:-90 - 90DEG
 H(□) Interval: 1.0DEG
 Test Speed: HIGH
 Temperature:25.3DEG
 Operators:
 Test Date:2021-08-11

V(B) Range:-75 - 75DEG
 V(B) Interval: 5.0DEG
 Test System:EVERFINE GO-2000B_V1 SYSTEM V2.0.366
 Humidity:65.0%
 Test Distance:7.500m [K=1.0267]
 Remarks:

AAI Figure

Test:U:221.11V I:0.1770A P:37.127W PF:0.9721 Freq:49.99Hz Lamp Flux:4513.81x1 lm		
NAME: GLM-SPL6060-36W-E	TYPE:LED	WEIGHT:
SPEC.:	DIM.:	SERIAL No.:1
MFR.: EVERFINE	SUR.:	Shielding Angle:



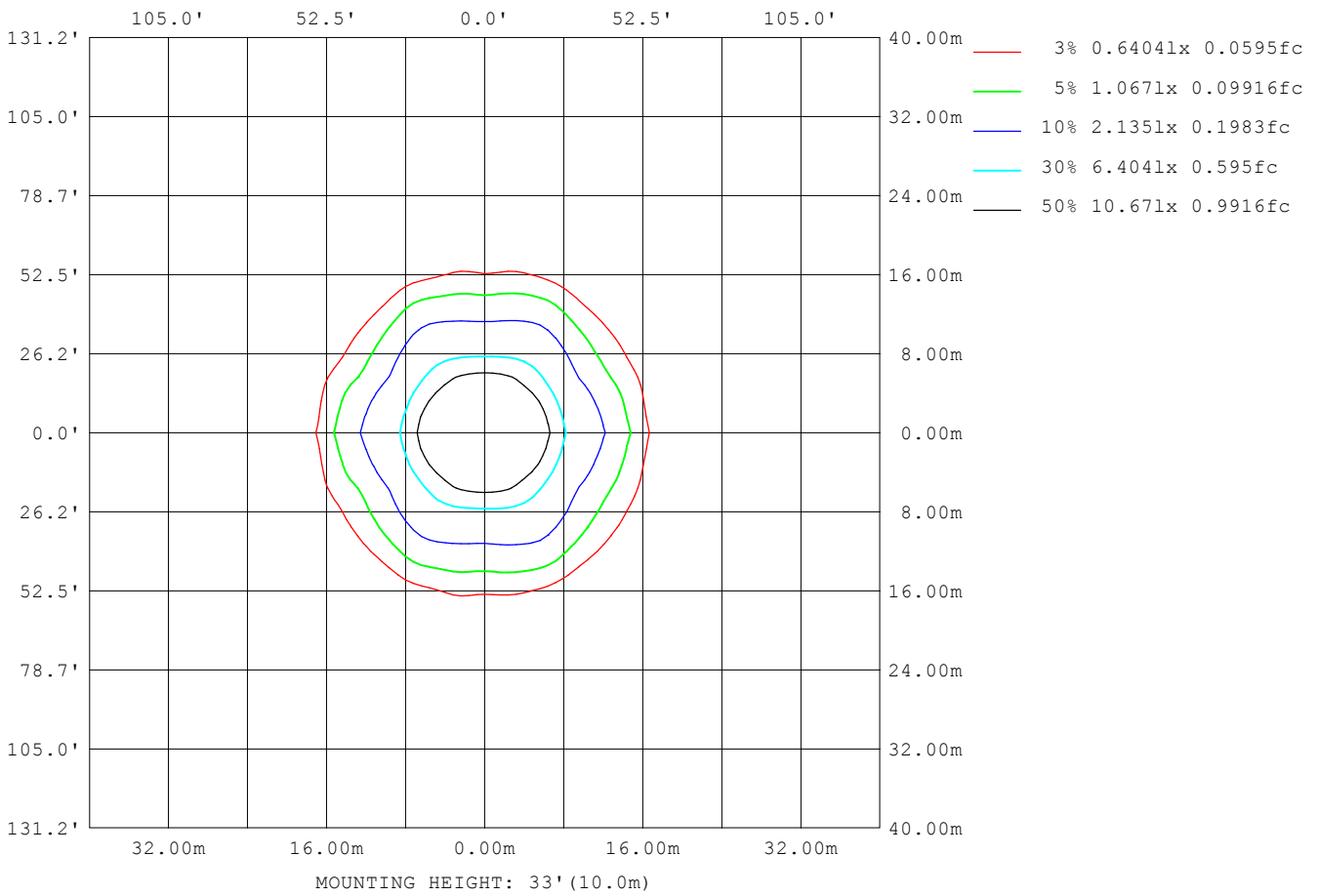
Note:The Curves indicate the illuminated area and the average illumination when the luminaire is at different distance.

H(□) Range:-90 - 90DEG
H(□) Interval: 1.0DEG
Test Speed: HIGH
Temperature:25.3DEG
Operators:
Test Date:2021-08-11

V(B) Range:-75 - 75DEG
V(B) Interval: 5.0DEG
Test System:EVERFINE GO-2000B_V1 SYSTEM V2.0.366
Humidity:65.0%
Test Distance:7.500m [K=1.0267]
Remarks:

ISOLUX DIAGRAM

Test:U:221.11V I:0.1770A P:37.127W PF:0.9721 Freq:49.99Hz Lamp Flux:4513.81x1 lm		
NAME: GLM-SPL6060-36W-E	TYPE:LED	WEIGHT:
SPEC.:	DIM.:	SERIAL No.:1
MFR.: EVERFINE	SUR.:	Shielding Angle:



H(□) Range:-90 - 90DEG
 H(□) Interval: 1.0DEG
 Test Speed: HIGH
 Temperature:25.3DEG
 Operators:
 Test Date:2021-08-11

V(B) Range:-75 - 75DEG
 V(B) Interval: 5.0DEG
 Test System:EVERFINE GO-2000B_V1 SYSTEM V2.0.366
 Humidity:65.0%
 Test Distance:7.500m [K=1.0267]
 Remarks:

LED Avg.L Report

Test:U:221.11V I:0.1770A P:37.127W PF:0.9721 Freq:49.99Hz Lamp Flux:4513.81x1 lm		
NAME: GLM-SPL6060-36W-E	TYPE:LED	WEIGHT:
SPEC.:	DIM.:	SERIAL No.:1
MFR.: EVERFINE	SUR.:	Shielding Angle:

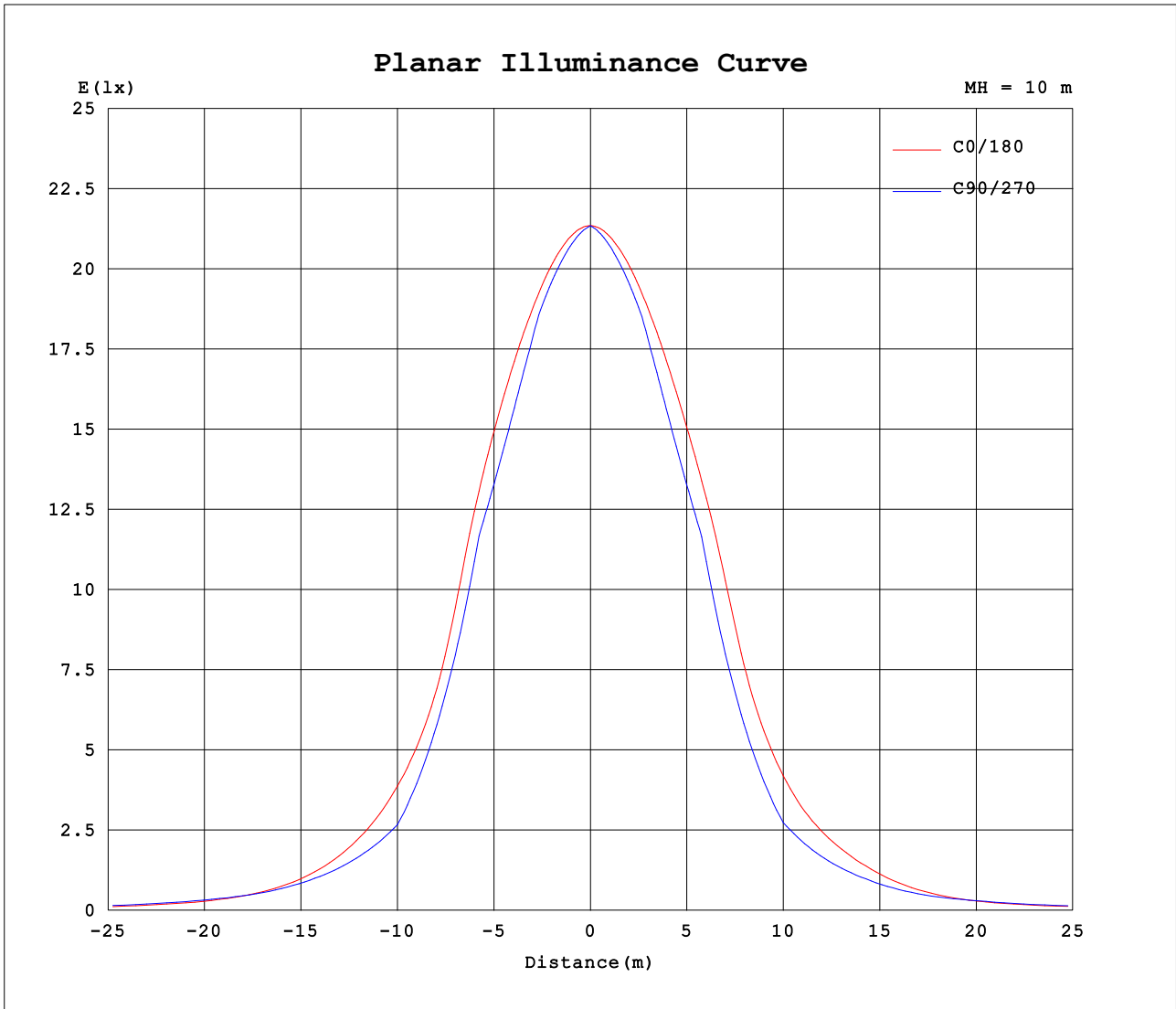
AvgL	cd/m2
L_0~180 (65) av	2054
L_0~180 (75) av	1749
L_0~180 (85) av	1163
L_90~270 (65) av	2342
L_90~270 (75) av	2091
L_90~270 (85) av	0
L_45 (65) av	2297
L_45 (75) av	2157
L_45 (85) av	0

Standard: GB/T 29293-2012

H(□) Range:-90 - 90DEG
H(□) Interval: 1.0DEG
Test Speed: HIGH
Temperature:25.3DEG
Operators:
Test Date:2021-08-11

V(B) Range:-75 - 75DEG
V(B) Interval: 5.0DEG
Test System:EVERFINE GO-2000B_V1 SYSTEM V2.0.366
Humidity:65.0%
Test Distance:7.500m [K=1.0267]
Remarks:

Planar Illuminance Curve



H(□) Range:-90 - 90DEG
H(□) Interval: 1.0DEG
Test Speed: HIGH
Temperature:25.3DEG
Operators:
Test Date:2021-08-11

V(B) Range:-75 - 75DEG
V(B) Interval: 5.0DEG
Test System:EVERFINE GO-2000B_V1 SYSTEM V2.0.366
Humidity:65.0%
Test Distance:7.500m [K=1.0267]
Remarks:

LUMINOUS DISTRIBUTION INTENSITY DATA

Test:U:221.11V I:0.1770A P:37.127W PF:0.9721 Freq:49.99Hz Lamp Flux:4513.81x1 lm		
NAME: GLM-SPL6060-36W-E	TYPE:LED	WEIGHT:
SPEC.:	DIM.:	SERIAL No.:1
MFR.: EVERFINE	SUR.:	Shielding Angle:

Table--1

UNIT: cd

C (DEG) □ (DEG)	0	5	10	15	20	25	30	35	40	45	50	55	60	65	70	75	80	85	90
0	2135	2135	2135	2135	2135	2135	2135	2135	2135	2135	2135	2135	2135	2135	2135	2135	2135	2135	2135
5	2134	2132	2130	2128	2126	2124	2122	2121	2119	2117	2116	2114	2113	2112	2111	2111	2110	2110	2110
10	2134	2130	2126	2122	2119	2115	2111	2108	2105	2102	2099	2096	2094	2091	2089	2088	2086	2086	2085
15	2135	2129	2123	2117	2111	2105	2100	2095	2090	2086	2082	2078	2074	2070	2067	2064	2062	2061	2060
20	2130	2122	2114	2105	2095	2086	2080	2076	2073	2069	2054	2034	2017	2004	1993	1984	1978	1974	1973
25	2105	2095	2088	2069	2052	2048	2050	2051	2003	1968	1944	1932	1922	1913	1904	1896	1891	1887	1885
30	2014	2011	1995	1944	1944	1977	1948	1875	1828	1819	1818	1816	1807	1803	1801	1799	1798	1797	1797
35	1717	1766	1718	1630	1728	1715	1617	1619	1632	1608	1590	1598	1609	1594	1560	1521	1485	1459	1450
40	1352	1398	1299	1302	1353	1225	1267	1309	1262	1277	1345	1380	1367	1326	1272	1216	1166	1125	1105
45	1097	1117	974	1032	932	921	913	834	948	1061	1077	1096	1104	1060	983	902	828	775	756
50	866	869	778	761	710	691	631	690	719	730	807	893	900	853	796	746	705	667	645
55	641	644	619	562	579	534	549	534	557	598	603	617	657	664	632	599	569	539	532
60	433	434	449	459	433	452	437	464	449	438	440	452	460	454	445	441	439	428	417
65	291	296	303	320	353	348	356	354	360	345	318	285	287	314	341	354	357	346	343
70	214	236	253	262	268	261	276	280	274	265	245	228	228	240	263	272	275	273	265
75	142	157	174	184	177	184	186	201	198	197	190	170	166	174	196	197	197	194	188
80	89.4	102	116	111	103	105	98.4	106	120	115	87.7	59.3	43.5	31.8	23.2	13.1	5.85	1.44	0.00
85	26.2	33.1	30.4	31.0	39.2	18.5	0.00	0.00	0.00	0.00	0.00	0.00	0.00	0.00	0.00	0.00	0.00	0.00	0.00
90	0.00	0.00	0.00	0.00	0.00	0.00	0.00	0.00	0.00	0.00	0.00	0.00	0.00	0.00	0.00	0.00	0.00	0.00	0.00

H(□) Range:-90 - 90DEG
H(□) Interval: 1.0DEG
Test Speed: HIGH
Temperature:25.3DEG
Operators:
Test Date:2021-08-11

V(B) Range:-75 - 75DEG
V(B) Interval: 5.0DEG
Test System:EVERFINE GO-2000B_V1 SYSTEM V2.0.366
Humidity:65.0%
Test Distance:7.500m [K=1.0267]
Remarks:

LUMINOUS DISTRIBUTION INTENSITY DATA

Test:U:221.11V I:0.1770A P:37.127W PF:0.9721 Freq:49.99Hz Lamp Flux:4513.81x1 lm		
NAME: GLM-SPL6060-36W-E	TYPE:LED	WEIGHT:
SPEC.:	DIM.:	SERIAL No.:1
MFR.: EVERFINE	SUR.:	Shielding Angle:

Table--2

UNIT: cd

C (DEG) □ (DEG)	95	100	105	110	115	120	125	130	135	140	145	150	155	160	165	170	175	180	185
0	2135	2135	2135	2135	2135	2135	2135	2135	2135	2135	2135	2135	2135	2135	2135	2135	2135	2135	2135
5	2110	2110	2110	2111	2112	2113	2114	2115	2117	2118	2120	2122	2123	2125	2127	2129	2131	2133	2131
10	2085	2086	2087	2088	2090	2092	2095	2097	2100	2104	2107	2110	2114	2118	2121	2125	2129	2133	2129
15	2061	2063	2065	2067	2070	2073	2077	2081	2085	2089	2094	2099	2104	2109	2115	2121	2128	2134	2127
20	1974	1978	1984	1993	2004	2018	2034	2052	2065	2070	2075	2083	2088	2094	2100	2109	2120	2132	2120
25	1885	1888	1893	1900	1910	1923	1939	1960	1980	2006	2039	2046	2056	2065	2067	2071	2092	2116	2091
30	1798	1800	1803	1808	1810	1808	1797	1799	1819	1861	1898	1937	1959	1980	1985	1962	1997	2062	1998
35	1458	1482	1518	1561	1606	1644	1665	1622	1584	1579	1639	1702	1687	1697	1770	1702	1716	1870	1716
40	1111	1143	1194	1254	1309	1337	1334	1334	1335	1295	1224	1269	1349	1289	1341	1359	1326	1491	1329
45	776	827	897	977	1051	1103	1112	1054	965	943	923	871	922	988	962	1073	1018	1188	1028
50	652	683	723	774	830	850	820	804	785	697	640	648	647	715	749	811	820	948	830
55	554	571	581	608	644	661	637	584	547	548	538	500	519	550	614	582	622	735	631
60	434	453	438	437	449	434	418	431	440	435	424	433	429	459	405	401	426	475	429
65	361	360	341	332	314	290	278	301	323	337	350	335	339	304	304	302	296	293	295
70	273	284	276	269	244	218	216	237	249	260	264	246	249	235	227	227	226	239	216
75	196	205	208	197	169	157	156	180	194	189	175	169	159	168	161	154	146	162	145
80	1.46	6.09	13.9	22.6	29.2	39.2	54.9	88.0	107	107	100.0	93.0	90.4	92.1	83.6	66.8	60.2	88.9	80.9
85	0.00	0.00	0.00	0.00	0.00	0.00	0.00	0.00	0.00	0.00	0.00	0.00	15.2	27.9	28.1	14.9	0.79	42.0	16.8
90	0.00	0.00	0.00	0.00	0.00	0.00	0.00	0.00	0.00	0.00	0.00	0.00	0.00	0.00	0.00	0.00	0.00	0.00	0.00

H(□) Range:-90 - 90DEG
H(□) Interval: 1.0DEG
Test Speed: HIGH
Temperature:25.3DEG
Operators:
Test Date:2021-08-11

V(B) Range:-75 - 75DEG
V(B) Interval: 5.0DEG
Test System:EVERFINE GO-2000B_V1 SYSTEM V2.0.366
Humidity:65.0%
Test Distance:7.500m [K=1.0267]
Remarks:

LUMINOUS DISTRIBUTION INTENSITY DATA

Test:U:221.11V I:0.1770A P:37.127W PF:0.9721 Freq:49.99Hz Lamp Flux:4513.81x1 lm		
NAME: GLM-SPL6060-36W-E	TYPE:LED	WEIGHT:
SPEC.:	DIM.:	SERIAL No.:1
MFR.: EVERFINE	SUR.:	Shielding Angle:

Table--4

UNIT: cd

C (DEG) □ (DEG)	285	290	295	300	305	310	315	320	325	330	335	340	345	350	355				
0	2135	2135	2135	2135	2135	2135	2135	2135	2135	2135	2135	2135	2135	2135	2135				
5	2109	2109	2110	2111	2113	2114	2116	2117	2119	2121	2123	2125	2127	2130	2132				
10	2083	2085	2087	2089	2092	2095	2098	2101	2105	2109	2113	2117	2121	2125	2130				
15	2058	2060	2064	2067	2071	2076	2080	2085	2090	2095	2101	2108	2114	2121	2128				
20	1978	1986	1997	2011	2027	2046	2060	2065	2069	2074	2082	2091	2102	2112	2121				
25	1891	1899	1909	1921	1934	1948	1970	2001	2043	2045	2046	2051	2068	2087	2095				
30	1796	1802	1810	1820	1833	1839	1840	1844	1884	1952	1981	1954	1955	2002	2014				
35	1518	1563	1610	1643	1646	1633	1645	1663	1648	1645	1741	1754	1649	1731	1773				
40	1216	1277	1338	1390	1413	1383	1321	1299	1342	1295	1245	1375	1321	1313	1404				
45	901	986	1066	1112	1107	1096	1084	968	849	927	936	953	1062	996	1128				
50	745	793	847	891	883	801	717	713	688	624	692	721	784	798	879				
55	596	627	655	647	603	581	567	535	516	535	521	579	572	636	651				
60	437	436	446	450	440	420	418	427	441	422	440	433	463	452	432				
65	348	331	307	276	273	305	332	344	338	338	330	344	315	298	294				
70	262	254	233	216	215	231	253	259	264	257	241	249	252	249	233				
75	185	186	167	155	154	173	184	186	188	171	173	173	184	172	152				
80	12.3	21.9	30.3	40.2	52.1	75.4	103	110	99.9	93.8	103	109	121	126	106				
85	0.00	0.00	0.00	0.00	0.00	0.00	0.00	0.00	0.00	0.00	0.00	18.8	44.3	41.2	45.9	56.1			
90	0.00	0.00	0.00	0.00	0.00	0.00	0.00	0.00	0.00	0.00	0.00	0.00	0.00	0.00	0.00				

H(□) Range:-90 - 90DEG
H(□) Interval: 1.0DEG
Test Speed: HIGH
Temperature:25.3DEG
Operators:
Test Date:2021-08-11

V(B) Range:-75 - 75DEG
V(B) Interval: 5.0DEG
Test System:EVERFINE GO-2000B_V1 SYSTEM V2.0.366
Humidity:65.0%
Test Distance:7.500m [K=1.0267]
Remarks: