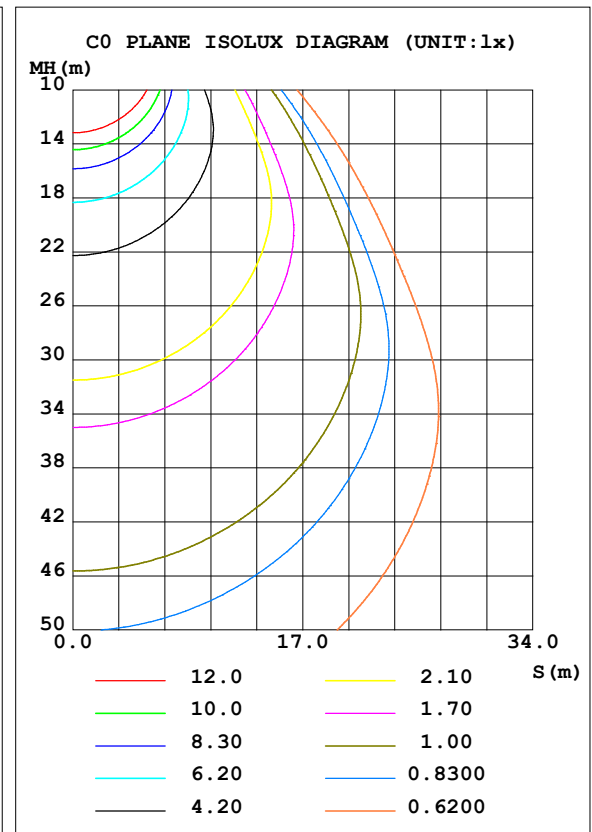
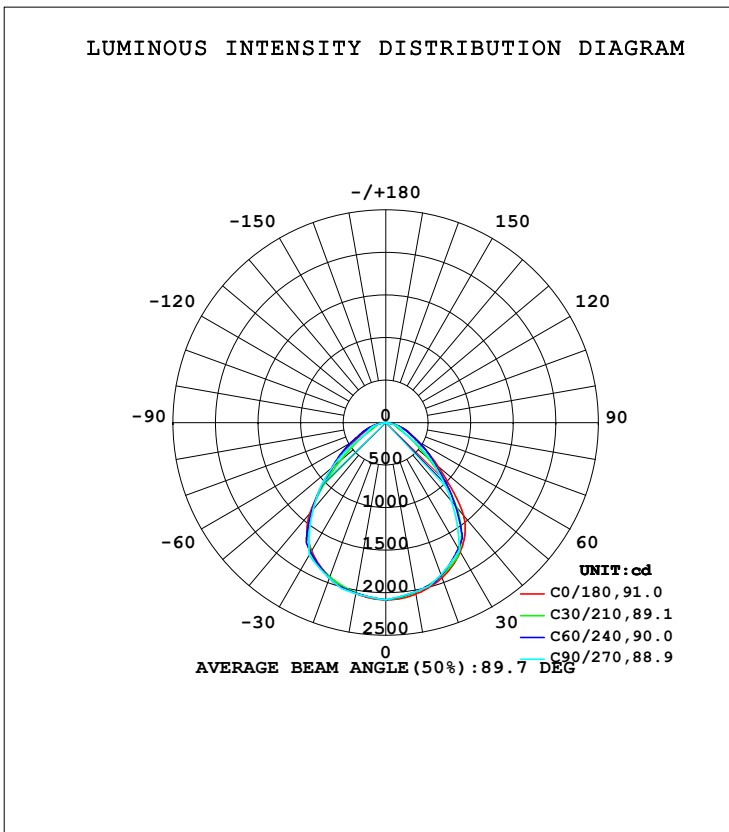


LUMINAIRE PHOTOMETRIC TEST REPORT

Test:U:220.71V I:0.1748A P:32.764W PF:0.9602 Freq:50.00Hz Lamp Flux:4286.08x1 lm		
NAME: GLM-SPL12030-32W-D	TYPE:LED	WEIGHT:
SPEC.:	DIM.:	SERIAL No.:1
MFR.: EVERFINE	SUR.:	Shielding Angle:

DATA OF LAMP		PHOTOMETRIC DATA Eff: 130.82 lm/W			
MODEL		I _{max} (cd)	2082	S/MH (C0/180)	1.24
NOMINAL POWER (W)	36	LOR (%)	100.0	S/MH (C90/270)	1.25
RATED VOLTAGE (V)	220.0	TOTAL FLUX (lm)	4286.1	<input type="checkbox"/> UP, DN (C0-180)	0.0, 48.9
NOMINAL FLUX (lm)	4286.08	CIE CLASS	DIRECT	<input type="checkbox"/> UP, DN (C180-360)	0.0, 51.1
LAMPS INSIDE	1	<input type="checkbox"/> up (%)	0.0	CIBSE SHR NOM	1.25
TEST VOLTAGE (V)	220	<input type="checkbox"/> down (%)	100.0	CIBSE SHR MAX	1.30



H() Range:-90 - 90DEG
H() Interval: 1.0DEG
Test Speed: HIGH
Temperature:25.3DEG
Operators:DAMIN
Test Date:2021-08-19

V(B) Range:-75 - 75DEG
V(B) Interval: 5.0DEG
Test System:EVERFINE GO-2000A_V1 SYSTEM V2.0.290
Humidity:65.0%
Test Distance:7.500m [K=1.1133]
Remarks:

ZONAL FLUX DIAGRAM

ZONAL FLUX DIAGRAM:

mm	C0	C45	C90	C135	C180	C225	C270	C315	mm	□ zone	□ total	%lum, lamp
10	2046	2019	2018	2015	2040	2031	2039	2034	0- 10	195.6	195.6	4.56,4.56
20	1938	1922	1901	1920	1929	1948	1945	1951	10- 20	560.8	756.5	17.6,17.6
30	1752	1701	1730	1696	1744	1747	1799	1752	20- 30	848.5	1605	37.4,37.4
40	1422	1343	1198	1330	1391	1426	1329	1445	30- 40	975.1	2580	60.2,60.2
50	804.4	765.0	705.0	761.0	813.5	810.3	823.8	830.3	40- 50	798.3	3378	78.8,78.8
60	418.3	381.2	251.9	387.6	414.1	396.5	282.9	397.5	50- 60	483.3	3862	90.1,90.1
70	248.3	208.0	168.5	218.7	219.4	212.6	182.5	211.4	60- 70	267.7	4129	96.3,96.3
80	60.52	72.53	0	82.51	98.36	83.57	0	80.46	70- 80	144.6	4274	99.7,99.7
90	0	0	0	0	0	0	0	0	80- 90	12.16	4286	100,100
100									90-100			
110									100-110			
120									110-120			
130									120-130			
140									130-140			
150									140-150			
160									150-160			
170									160-170			
180									170-180			
DEG	LUMINOUS INTENSITY:cd									UNIT:lm		

Conical surface Flux(90deg): 3018.6 lm

%lum = 70.4%

%lamp = 70.4%

Conical surface Flux(120deg): 3861.6 lm

%lum = 90.1%

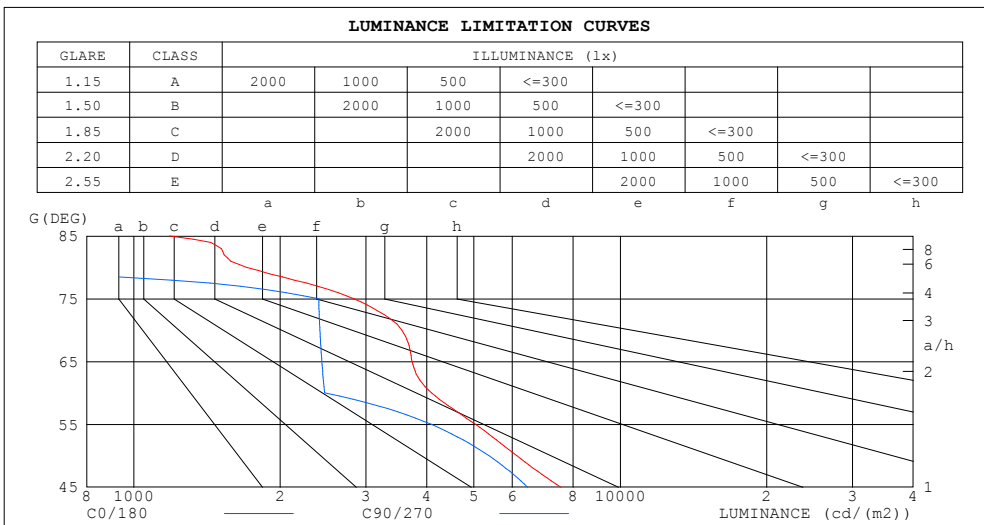
%lamp = 90.1%

H(□) Range:-90 - 90DEG
H(□) Interval: 1.0DEG
Test Speed: HIGH
Temperature:25.3DEG
Operators:DAMIN
Test Date:2021-08-19

V(B) Range:-75 - 75DEG
V(B) Interval: 5.0DEG
Test System:EVERFINE GO-2000A_V1 SYSTEM V2.0.290
Humidity:65.0%
Test Distance:7.500m [K=1.1133]
Remarks:

LUMINANCE LIMITATION CURVES

Test:U:220.71V I:0.1748A P:32.764W PF:0.9602 Freq:50.00Hz Lamp Flux:4286.08x1 lm		
NAME: GLM-SPL12030-32W-D	TYPE:LED	WEIGHT:
SPEC.:	DIM.:	SERIAL No.:1
MFR.: EVERFINE	SUR.:	Shielding Angle:



LUMINANCE cd/(m2)		
G (DEG)	C0/180	C90/270
85	1185	0
80	1706	0
75	2835	2400
70	3554	2413
65	3731	2436
60	4096	2467
55	5038	4084
50	6127	5370
45	7552	6450

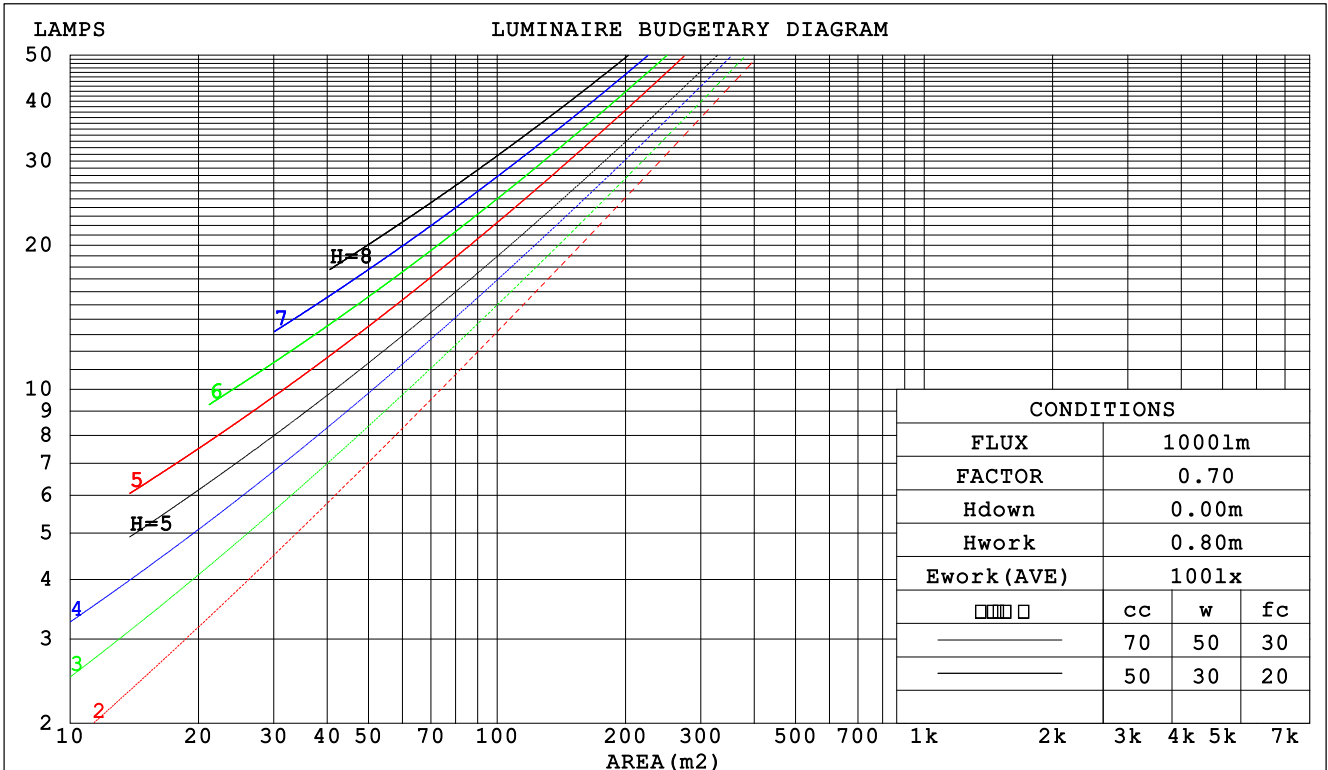
H(□) Range:-90 - 90DEG
H(□) Interval: 1.0DEG
Test Speed: HIGH
Temperature:25.3DEG
Operators:DAMIN
Test Date:2021-08-19

V(B) Range:-75 - 75DEG
V(B) Interval: 5.0DEG
Test System:EVERFINE GO-2000A_V1 SYSTEM V2.0.290
Humidity:65.0%
Test Distance:7.500m [K=1.1133]
Remarks:

CU AND LUMINAIRE BUDGETARY ESTIMATE DIAGRAM

Test:U:220.71V I:0.1748A P:32.764W PF:0.9602 Freq:50.00Hz Lamp Flux:4286.08x1 lm		
NAME: GLM-SPL12030-32W-D	TYPE:LED	WEIGHT:
SPEC.:	DIM.:	SERIAL No.:1
MFR.: EVERFINE	SUR.:	Shielding Angle:

□cc	80%			70%			50%			30%			10%			0
□w	50%	30%	10%	50%	30%	10%	50%	30%	10%	50%	30%	10%	50%	30%	10%	0
□fc	20%			20%			20%			20%			20%			0
RCR	RCR:Room Cavity Ratio						Coefficients of Utilization(CU)									
0.0	1.19	1.19	1.19	1.16	1.16	1.16	1.11	1.11	1.11	1.06	1.06	1.06	1.02	1.02	1.02	1.00
1.0	1.07	1.04	1.00	1.05	1.02	.99	1.01	.98	.96	.97	.95	.93	.93	.92	.90	.88
2.0	.96	.90	.85	.94	.89	.84	.90	.86	.82	.87	.84	.80	.84	.81	.79	.77
3.0	.86	.79	.73	.84	.78	.73	.81	.76	.71	.79	.74	.70	.76	.72	.69	.67
4.0	.77	.70	.64	.76	.69	.63	.74	.67	.63	.71	.66	.62	.69	.65	.61	.59
5.0	.70	.62	.56	.69	.61	.56	.67	.60	.55	.65	.59	.55	.63	.58	.54	.52
6.0	.64	.56	.50	.63	.55	.50	.61	.54	.49	.60	.54	.49	.58	.53	.49	.47
7.0	.58	.50	.45	.58	.50	.45	.56	.49	.44	.55	.49	.44	.53	.48	.44	.42
8.0	.54	.46	.40	.53	.46	.40	.52	.45	.40	.50	.44	.40	.49	.44	.40	.38
9.0	.49	.42	.37	.49	.42	.37	.48	.41	.37	.47	.41	.36	.46	.40	.36	.35
10.0	.46	.39	.34	.45	.38	.34	.44	.38	.33	.44	.38	.33	.43	.37	.33	.32



H(□) Range:-90 - 90DEG
H(□) Interval: 1.0DEG
Test Speed: HIGH
Temperature:25.3DEG
Operators:DAMIN
Test Date:2021-08-19

V(B) Range:-75 - 75DEG
V(B) Interval: 5.0DEG
Test System:EVERFINE GO-2000A_V1 SYSTEM V2.0.290
Humidity:65.0%
Test Distance:7.500m [K=1.1133]
Remarks:

WEC AND CCEC

Test:U:220.71V I:0.1748A P:32.764W PF:0.9602 Freq:50.00Hz Lamp Flux:4286.08x1 lm		
NAME: GLM-SPL12030-32W-D	TYPE:LED	WEIGHT:
SPEC.:	DIM.:	SERIAL No.:1
MFR.: EVERFINE	SUR.:	Shielding Angle:

<input type="checkbox"/> cc	80%	70%	50%	30%	10%	0
<input type="checkbox"/> w	50% 30% 10%	50% 30% 10%	50% 30% 10%	50% 30% 10%	50% 30% 10%	0
<input type="checkbox"/> fc	20%	20%	20%	20%	20%	0
RCR	RCR:Room Cavity Ratio		Wall Exitance Coefficients (WEC)			
0.0						
1.0	.250 .142 .045	.243 .139 .044	.230 .132 .042	.218 .126 .040	.207 .120 .039	
2.0	.242 .133 .041	.236 .130 .040	.225 .125 .039	.214 .120 .038	.205 .116 .037	
3.0	.229 .122 .037	.224 .120 .036	.214 .116 .035	.205 .112 .034	.196 .109 .034	
4.0	.215 .112 .033	.211 .110 .033	.202 .107 .032	.194 .104 .031	.187 .101 .031	
5.0	.202 .103 .030	.198 .102 .030	.191 .099 .029	.183 .097 .029	.177 .094 .028	
6.0	.190 .095 .027	.187 .094 .027	.180 .092 .027	.173 .090 .026	.167 .088 .026	
7.0	.179 .089 .025	.176 .088 .025	.170 .086 .025	.164 .084 .024	.159 .082 .024	
8.0	.169 .083 .023	.166 .082 .023	.161 .080 .023	.155 .079 .023	.151 .077 .023	
9.0	.160 .077 .022	.157 .077 .021	.152 .075 .021	.148 .074 .021	.143 .073 .021	
10.0	.151 .073 .020	.149 .072 .020	.145 .071 .020	.140 .070 .020	.136 .069 .020	

<input type="checkbox"/> cc	80%	70%	50%	30%	10%	0
<input type="checkbox"/> w	50% 30% 10%	50% 30% 10%	50% 30% 10%	50% 30% 10%	50% 30% 10%	0
<input type="checkbox"/> fc	20%	20%	20%	20%	20%	0
RCR	RCR:Room Cavity Ratio		Ceiling Cavity Exitance Coefficients (CCEC)			
0.0	.190 .190 .190	.163 .163 .163	.111 .111 .111	.064 .064 .064	.020 .020 .020	
1.0	.176 .157 .139	.151 .134 .120	.103 .093 .083	.059 .054 .048	.019 .017 .016	
2.0	.166 .132 .104	.142 .114 .090	.097 .079 .063	.056 .046 .037	.018 .015 .012	
3.0	.157 .114 .080	.134 .098 .069	.092 .068 .049	.053 .040 .029	.017 .013 .009	
4.0	.149 .100 .063	.127 .087 .055	.088 .060 .039	.051 .035 .023	.016 .012 .008	
5.0	.141 .089 .051	.121 .077 .045	.083 .054 .032	.048 .032 .019	.016 .010 .006	
6.0	.134 .081 .043	.115 .070 .037	.080 .049 .026	.046 .029 .016	.015 .009 .005	
7.0	.128 .074 .036	.110 .064 .031	.076 .045 .022	.044 .026 .013	.014 .009 .004	
8.0	.122 .068 .031	.105 .059 .027	.073 .041 .019	.042 .024 .011	.014 .008 .004	
9.0	.117 .063 .027	.100 .055 .023	.070 .038 .017	.041 .023 .010	.013 .007 .003	
10.0	.111 .059 .024	.096 .051 .021	.067 .036 .015	.039 .021 .009	.013 .007 .003	

H(□) Range:-90 - 90DEG
H(□) Interval: 1.0DEG
Test Speed: HIGH
Temperature:25.3DEG
Operators:DAMIN
Test Date:2021-08-19

V(B) Range:-75 - 75DEG
V(B) Interval: 5.0DEG
Test System:EVERFINE GO-2000A_V1 SYSTEM V2.0.290
Humidity:65.0%
Test Distance:7.500m [K=1.1133]
Remarks:

UGR(Unified Glare Rating) Table

Test:U:220.71V I:0.1748A P:32.764W PF:0.9602 Freq:50.00Hz Lamp Flux:4286.08x1 lm		
NAME: GLM-SPL12030-32W-D	TYPE:LED	WEIGHT:
SPEC.:	DIM.:	SERIAL No.:1
MFR.: EVERFINE	SUR.:	Shielding Angle:

ceiling/cavity	0.7	0.7	0.5	0.5	0.3	0.7	0.7	0.5	0.5	0.3
walls	0.5	0.3	0.5	0.3	0.3	0.5	0.3	0.5	0.3	0.3
working plane	0.2	0.2	0.2	0.2	0.2	0.2	0.2	0.2	0.2	0.2
Room dimensions	Viewed crosswise					Viewed endwise				
x = 2H y = 2H	17.1	18.4	17.3	18.6	18.8	17.3	18.7	17.6	18.9	19.0
3H	17.8	19.1	18.1	19.3	19.5	18.0	19.2	18.2	19.4	19.6
4H	18.2	19.4	18.5	19.6	19.8	18.3	19.4	18.6	19.7	19.9
6H	18.3	19.4	18.7	19.7	19.9	18.3	19.3	18.6	19.6	19.9
8H	18.3	19.4	18.7	19.6	19.9	18.2	19.3	18.5	19.5	19.8
12H	18.3	19.3	18.6	19.6	19.9	18.2	19.2	18.5	19.4	19.7
4H 2H	17.3	18.5	17.6	18.7	19.0	17.6	18.8	17.9	19.0	19.2
3H	18.1	19.2	18.5	19.4	19.7	18.5	19.5	18.9	19.8	20.1
4H	18.6	19.5	19.0	19.8	20.2	19.0	19.9	19.4	20.2	20.6
6H	18.9	19.7	19.3	20.0	20.4	19.1	19.9	19.5	20.2	20.6
8H	18.9	19.6	19.3	20.0	20.4	19.0	19.8	19.4	20.1	20.5
12H	18.9	19.5	19.3	19.9	20.3	19.0	19.6	19.4	20.0	20.4
8H 4H	18.8	19.5	19.2	19.9	20.3	19.1	19.9	19.5	20.2	20.6
6H	19.1	19.7	19.5	20.1	20.5	19.2	19.8	19.6	20.2	20.6
8H	19.1	19.7	19.6	20.1	20.5	19.2	19.7	19.6	20.1	20.6
12H	19.1	19.6	19.6	20.0	20.5	19.1	19.6	19.6	20.0	20.5
12H 4H	18.7	19.4	19.2	19.8	20.2	19.1	19.8	19.5	20.2	20.6
6H	19.1	19.6	19.5	20.0	20.5	19.2	19.7	19.6	20.2	20.6
8H	19.1	19.6	19.6	20.0	20.5	19.2	19.6	19.6	20.1	20.5
Variations with the observer position at spacings:										
S = 1.0H	+ 0.7 / - 0.8					+ 0.6 / - 0.6				
1.5H	+ 0.7 / - 1.1					+ 0.2 / - 0.7				
2.0H	+ 2.0 / - 2.4					+ 0.8 / - 2.3				

CIE Pub.117, 4286 lm Total Lamp Luminous Flux Corrected (8log(F/F0) = 5.1)

H(□) Range:-90 - 90DEG	V(B) Range:-75 - 75DEG
H(□) Interval: 1.0DEG	V(B) Interval: 5.0DEG
Test Speed: HIGH	Test System:EVERFINE GO-2000A_V1 SYSTEM V2.0.290
Temperature:25.3DEG	Humidity:65.0%
Operators:DAMIN	Test Distance:7.500m [K=1.1133]
Test Date:2021-08-19	Remarks:

UTILIZATION FACTORS TABLE

Test:U:220.71V I:0.1748A P:32.764W PF:0.9602 Freq:50.00Hz Lamp Flux:4286.08x1 lm		
NAME: GLM-SPL12030-32W-D	TYPE:LED	WEIGHT:
SPEC.:	DIM.:	SERIAL No.:1
MFR.: EVERFINE	SUR.:	Shielding Angle:

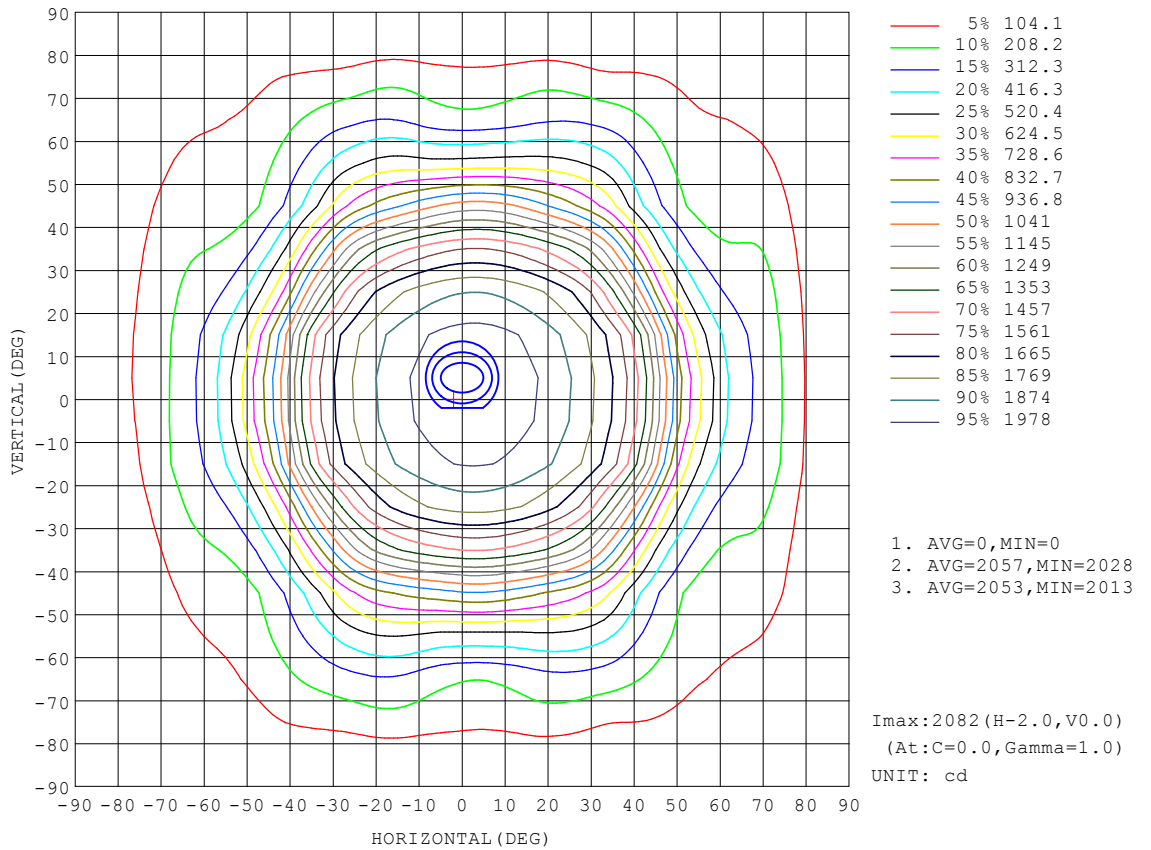
REFLECTANCE										
Ceiling	0.8	0.8	0.8	0.7	0.7	0.7	0.5	0.5	0.5	0
Walls	0.7	0.5	0.3	0.7	0.5	0.3	0.7	0.5	0.3	0
Working plane	0.2	0.2	0.2	0.2	0.2	0.2	0.2	0.2	0.2	0
ROOM INDEX	UTILIZATION FACTORS (PERCENT) $k(RI) \times RCR = 5$									
k = 0.60	67	57	51	66	56	50	65	56	50	45
0.80	76	67	61	76	66	60	74	66	60	54
1.00	84	75	69	83	75	69	81	75	68	62
1.25	91	82	76	89	82	76	87	80	75	69
1.50	95	87	82	93	86	81	91	85	80	74
2.00	101	94	89	99	93	88	96	91	86	80
2.50	104	97	93	102	96	92	98	94	90	83
3.00	106	101	96	104	99	95	100	97	93	86
4.00	109	105	101	107	103	100	103	100	97	89
5.00	111	107	104	109	106	103	105	102	100	91
ROOM INDEX	UF(total)									Direct
According to DIN EN 13032-2 2004			Suspended				SHRNOM = 1.25			

H(□) Range:-90 - 90DEG
H(□) Interval: 1.0DEG
Test Speed: HIGH
Temperature:25.3DEG
Operators:DAMIN
Test Date:2021-08-19

V(B) Range:-75 - 75DEG
V(B) Interval: 5.0DEG
Test System:EVERFINE GO-2000A_V1 SYSTEM V2.0.290
Humidity:65.0%
Test Distance:7.500m [K=1.1133]
Remarks:

ISOCANDELA DIAGRAM

Test:U:220.71V I:0.1748A P:32.764W PF:0.9602 Freq:50.00Hz Lamp Flux:4286.08x1 lm		
NAME: GLM-SPL12030-32W-D	TYPE:LED	WEIGHT:
SPEC.:	DIM.:	SERIAL No.:1
MFR.: EVERFINE	SUR.:	Shielding Angle:

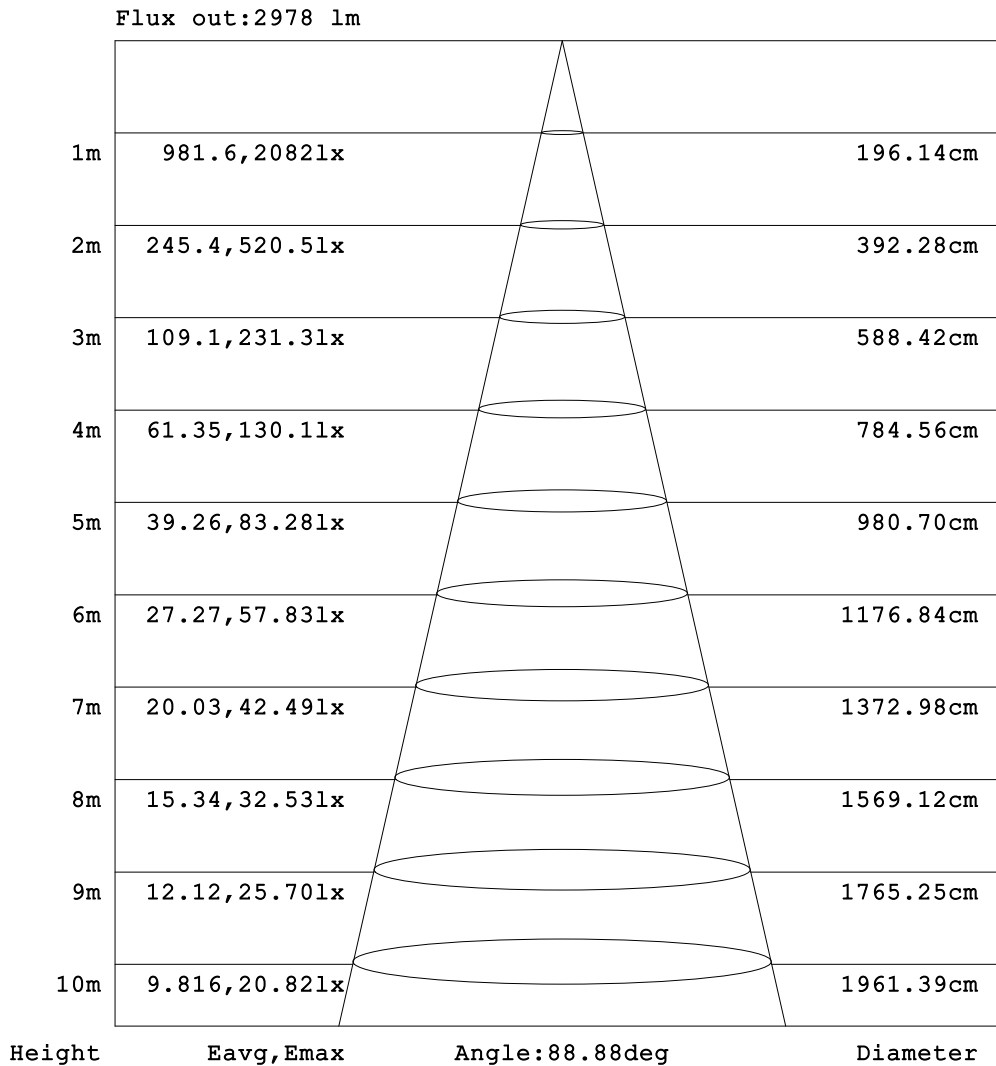


H(□) Range:-90 - 90DEG
H(□) Interval: 1.0DEG
Test Speed: HIGH
Temperature:25.3DEG
Operators:DAMIN
Test Date:2021-08-19

V(B) Range:-75 - 75DEG
V(B) Interval: 5.0DEG
Test System:EVERFINE GO-2000A_V1 SYSTEM V2.0.290
Humidity:65.0%
Test Distance:7.500m [K=1.1133]
Remarks:

AAI Figure

Test:U:220.71V I:0.1748A P:32.764W PF:0.9602 Freq:50.00Hz Lamp Flux:4286.08x1 lm		
NAME: GLM-SPL12030-32W-D	TYPE:LED	WEIGHT:
SPEC.:	DIM.:	SERIAL No.:1
MFR.: EVERFINE	SUR.:	Shielding Angle:



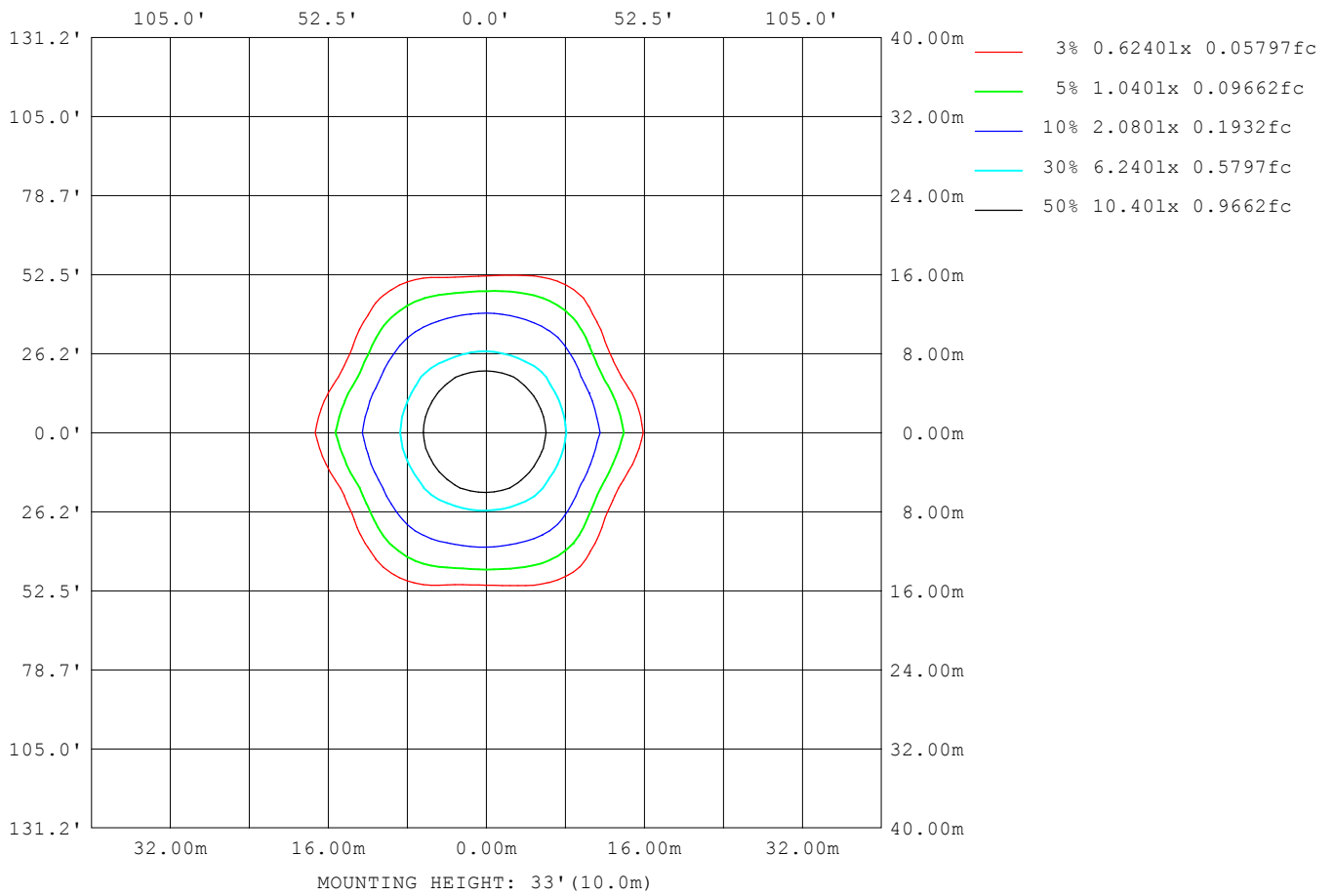
Note:The Curves indicate the illuminated area and the average illumination when the luminaire is at different distance.

H(□) Range:-90 - 90DEG
H(□) Interval: 1.0DEG
Test Speed: HIGH
Temperature:25.3DEG
Operators:DAMIN
Test Date:2021-08-19

V(B) Range:-75 - 75DEG
V(B) Interval: 5.0DEG
Test System:EVERFINE GO-2000A_V1 SYSTEM V2.0.290
Humidity:65.0%
Test Distance:7.500m [K=1.1133]
Remarks:

ISOLUX DIAGRAM

Test:U:220.71V I:0.1748A P:32.764W PF:0.9602 Freq:50.00Hz Lamp Flux:4286.08x1 lm		
NAME: GLM-SPL12030-32W-D	TYPE:LED	WEIGHT:
SPEC.:	DIM.:	SERIAL No.:1
MFR.: EVERFINE	SUR.:	Shielding Angle:



H(□) Range:-90 - 90DEG
H(□) Interval: 1.0DEG
Test Speed: HIGH
Temperature:25.3DEG
Operators:DAMIN
Test Date:2021-08-19

V(B) Range:-75 - 75DEG
V(B) Interval: 5.0DEG
Test System:EVERFINE GO-2000A_V1 SYSTEM V2.0.290
Humidity:65.0%
Test Distance:7.500m [K=1.1133]
Remarks:

LED Avg.L Report

Test:U:220.71V I:0.1748A P:32.764W PF:0.9602 Freq:50.00Hz Lamp Flux:4286.08x1 lm		
NAME: GLM-SPL12030-32W-D	TYPE:LED	WEIGHT:
SPEC.:	DIM.:	SERIAL No.:1
MFR.: EVERFINE	SUR.:	Shielding Angle:

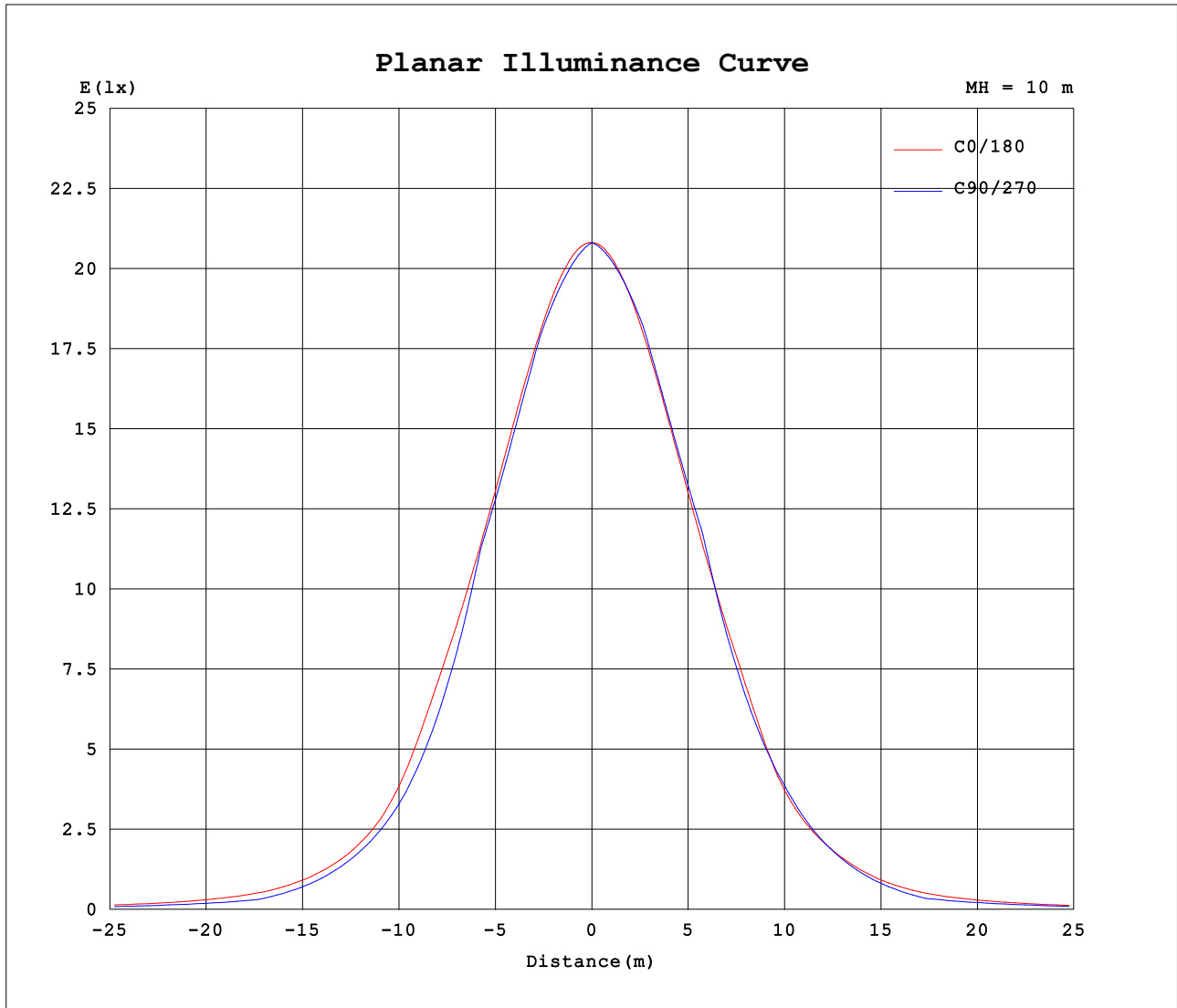
AvgL	cd/m2
L_0~180 (65) av	3661
L_0~180 (75) av	2840
L_0~180 (85) av	1495
L_90~270 (65) av	2566
L_90~270 (75) av	2452
L_90~270 (85) av	0
L_45 (65) av	3355
L_45 (75) av	2801
L_45 (85) av	0

Standard: GB/T 29293-2012

H(□) Range:-90 - 90DEG
H(□) Interval: 1.0DEG
Test Speed: HIGH
Temperature:25.3DEG
Operators:DAMIN
Test Date:2021-08-19

V(B) Range:-75 - 75DEG
V(B) Interval: 5.0DEG
Test System:EVERFINE GO-2000A_V1 SYSTEM V2.0.290
Humidity:65.0%
Test Distance:7.500m [K=1.1133]
Remarks:

Planar Illuminance Curve



H(□) Range:-90 - 90DEG
 H(□) Interval: 1.0DEG
 Test Speed: HIGH
 Temperature:25.3DEG
 Operators:DAMIN
 Test Date:2021-08-19

V(B) Range:-75 - 75DEG
 V(B) Interval: 5.0DEG
 Test System:EVERFINE GO-2000A_V1 SYSTEM V2.0.290
 Humidity:65.0%
 Test Distance:7.500m [K=1.1133]
 Remarks:

LUMINOUS DISTRIBUTION INTENSITY DATA

Test:U:220.71V I:0.1748A P:32.764W PF:0.9602 Freq:50.00Hz Lamp Flux:4286.08x1 lm		
NAME: GLM-SPL12030-32W-D	TYPE:LED	WEIGHT:
SPEC.:	DIM.:	SERIAL No.:1
MFR.: EVERFINE	SUR.:	Shielding Angle:

Table--1

UNIT: cd

C (DEG) □ (DEG)	0	5	10	15	20	25	30	35	40	45	50	55	60	65	70	75	80	85	90
0	2082	2082	2082	2082	2082	2082	2082	2082	2082	2082	2082	2082	2082	2082	2082	2082	2082	2082	2082
5	2074	2071	2068	2066	2064	2062	2060	2058	2057	2055	2054	2053	2052	2052	2051	2050	2050	2050	2050
10	2046	2041	2036	2032	2028	2025	2023	2021	2020	2019	2018	2018	2018	2018	2018	2018	2018	2018	2018
15	2000	1993	1987	1981	1978	1975	1974	1973	1973	1974	1975	1977	1979	1981	1982	1984	1985	1985	1986
20	1938	1929	1922	1917	1914	1913	1914	1916	1919	1922	1920	1914	1909	1906	1904	1902	1901	1901	1901
25	1857	1846	1838	1834	1834	1836	1842	1849	1835	1824	1817	1813	1812	1812	1813	1814	1815	1815	1815
30	1752	1738	1730	1729	1732	1742	1735	1716	1705	1701	1700	1703	1708	1713	1718	1724	1728	1730	1730
35	1620	1597	1586	1587	1599	1584	1551	1538	1540	1550	1564	1579	1552	1524	1500	1483	1473	1467	1464
40	1422	1383	1365	1369	1371	1323	1296	1291	1315	1343	1331	1305	1274	1247	1224	1209	1203	1200	1198
45	1091	1042	1024	1039	1012	989	980	987	1018	1043	1047	1030	1000	970	947	934	931	933	932
50	804	746	713	693	665	644	646	692	730	765	779	762	750	740	730	718	711	708	705
55	590	536	500	461	431	412	422	450	482	516	574	594	592	576	553	524	500	484	478
60	418	387	358	311	275	266	267	275	327	381	430	450	441	418	383	336	292	262	252
65	322	302	272	224	190	166	167	201	244	283	313	322	317	309	293	264	234	215	210
70	248	241	217	187	146	129	137	155	184	208	225	234	234	236	230	213	188	172	169
75	150	147	135	135	121	116	115	113	125	142	150	148	148	159	166	160	140	128	127
80	60.5	50.4	60.5	67.4	68.5	60.3	57.4	64.4	76.9	72.5	60.9	45.2	34.3	27.5	19.2	10.7	4.19	0.96	0.00
85	21.1	6.12	8.71	8.83	1.85	4.00	0.00	0.00	0.00	0.00	0.00	0.00	0.00	0.00	0.00	0.00	0.00	0.00	0.00
90	0.00	0.00	0.00	0.00	0.00	0.00	0.00	0.00	0.00	0.00	0.00	0.00	0.00	0.00	0.00	0.00	0.00	0.00	0.00

H(□) Range:-90 - 90DEG
H(□) Interval: 1.0DEG
Test Speed: HIGH
Temperature:25.3DEG
Operators:DAMIN
Test Date:2021-08-19

V(B) Range:-75 - 75DEG
V(B) Interval: 5.0DEG
Test System:EVERFINE GO-2000A_V1 SYSTEM V2.0.290
Humidity:65.0%
Test Distance:7.500m [K=1.1133]
Remarks:

LUMINOUS DISTRIBUTION INTENSITY DATA

Test:U:220.71V I:0.1748A P:32.764W PF:0.9602 Freq:50.00Hz Lamp Flux:4286.08x1 lm		
NAME: GLM-SPL12030-32W-D	TYPE:LED	WEIGHT:
SPEC.:	DIM.:	SERIAL No.:1
MFR.: EVERFINE	SUR.:	Shielding Angle:

Table--2

UNIT: cd

C (DEG) □ (DEG)	95	100	105	110	115	120	125	130	135	140	145	150	155	160	165	170	175	180	185	
0	2082	2082	2082	2082	2082	2082	2082	2082	2082	2082	2082	2082	2082	2082	2082	2082	2082	2082	2082	
5	2050	2050	2050	2050	2051	2051	2052	2052	2053	2054	2056	2057	2059	2060	2063	2065	2067	2070	2068	
10	2017	2017	2017	2016	2016	2015	2015	2015	2015	2016	2017	2019	2021	2023	2027	2030	2035	2040	2037	
15	1985	1984	1983	1981	1979	1976	1974	1972	1971	1969	1969	1969	1970	1972	1975	1980	1985	1992	1988	
20	1900	1900	1900	1901	1903	1906	1911	1917	1920	1915	1912	1909	1908	1908	1910	1914	1921	1929	1924	
25	1815	1813	1811	1809	1808	1808	1810	1814	1821	1831	1845	1837	1831	1828	1828	1831	1838	1848	1842	
30	1729	1725	1720	1714	1708	1703	1698	1696	1696	1700	1710	1730	1736	1727	1722	1723	1730	1744	1736	
35	1464	1468	1479	1497	1521	1549	1573	1557	1542	1530	1528	1542	1577	1592	1579	1576	1586	1609	1595	
40	1195	1197	1208	1227	1251	1280	1307	1326	1330	1300	1281	1289	1314	1354	1348	1340	1355	1391	1366	
45	926	925	937	958	984	1015	1040	1048	1035	1011	987	977	981	1003	1031	1011	1020	1055	1030	
50	704	710	727	747	763	773	780	782	761	732	697	657	657	682	720	740	765	813	778	
55	484	503	539	576	602	613	606	574	517	489	462	438	425	448	485	527	554	600	565	
60	265	301	358	412	445	458	456	431	388	339	290	280	277	287	328	373	392	414	400	
65	220	243	283	318	332	331	326	317	293	255	213	175	175	202	235	273	296	310	301	
70	178	195	225	249	255	249	244	235	219	192	161	137	130	146	175	196	221	219	221	
75	135	146	165	179	177	168	166	164	153	133	114	104	102	104	107	114	143	150	150	
80	1.01	4.35	11.0	20.8	31.2	41.0	54.3	69.8	82.5	83.0	68.6	60.3	57.4	56.9	56.0	55.5	57.7	98.4	93.7	
85	0.00	0.00	0.00	0.00	0.00	0.00	0.00	0.00	0.00	0.00	0.00	0.00	0.00	8.11	11.7	11.9	16.2	14.0	32.1	30.7
90	0.00	0.00	0.00	0.00	0.00	0.00	0.00	0.00	0.00	0.00	0.00	0.00	0.00	0.00	0.00	0.00	0.00	0.00	0.00	0.00

H(□) Range:-90 - 90DEG
H(□) Interval: 1.0DEG
Test Speed: HIGH
Temperature:25.3DEG
Operators:DAMIN
Test Date:2021-08-19

V(B) Range:-75 - 75DEG
V(B) Interval: 5.0DEG
Test System:EVERFINE GO-2000A_V1 SYSTEM V2.0.290
Humidity:65.0%
Test Distance:7.500m [K=1.1133]
Remarks:

LUMINOUS DISTRIBUTION INTENSITY DATA

Test:U:220.71V I:0.1748A P:32.764W PF:0.9602 Freq:50.00Hz Lamp Flux:4286.08x1 lm		
NAME: GLM-SPL12030-32W-D	TYPE:LED	WEIGHT:
SPEC.:	DIM.:	SERIAL No.:1
MFR.: EVERFINE	SUR.:	Shielding Angle:

Table--3

UNIT: cd

C (DEG) □ (DEG)	190	195	200	205	210	215	220	225	230	235	240	245	250	255	260	265	270	275	280
0	2082	2082	2082	2082	2082	2082	2082	2082	2082	2082	2082	2082	2082	2082	2082	2082	2082	2082	2082
5	2067	2065	2064	2063	2062	2062	2061	2061	2060	2060	2060	2060	2060	2060	2060	2060	2060	2061	2061
10	2034	2032	2030	2029	2029	2029	2030	2031	2031	2033	2034	2035	2036	2037	2038	2039	2039	2039	2039
15	1985	1983	1983	1983	1984	1986	1989	1993	1996	2000	2004	2007	2011	2013	2015	2017	2018	2017	2016
20	1921	1920	1921	1924	1929	1934	1941	1948	1949	1946	1943	1942	1942	1943	1943	1944	1945	1945	1945
25	1839	1840	1844	1851	1861	1873	1864	1858	1856	1855	1856	1859	1862	1865	1868	1871	1872	1872	1871
30	1734	1738	1747	1761	1761	1751	1747	1747	1751	1756	1763	1771	1779	1786	1792	1797	1799	1799	1796
35	1593	1602	1620	1613	1591	1588	1599	1615	1631	1647	1621	1596	1578	1568	1564	1563	1564	1567	1571
40	1364	1384	1399	1366	1349	1357	1392	1426	1408	1381	1354	1333	1320	1316	1320	1325	1329	1331	1332
45	1032	1063	1041	1030	1039	1063	1089	1113	1119	1105	1084	1066	1058	1061	1073	1087	1094	1096	1091
50	767	754	713	690	699	744	779	810	831	827	828	829	826	820	817	820	824	829	835
55	550	511	473	448	457	481	509	537	603	638	649	644	625	593	566	554	553	564	582
60	388	344	303	288	285	292	343	397	448	475	480	468	434	376	320	290	283	299	333
65	283	245	212	180	175	209	251	291	323	336	341	345	331	294	255	236	233	243	264
70	214	195	163	140	141	158	183	213	235	248	253	263	259	235	203	187	183	191	209
75	153	148	136	124	118	118	132	150	161	165	167	179	186	172	150	137	132	138	152
80	90.2	86.7	86.8	79.7	75.0	79.5	90.2	83.6	68.2	52.6	39.9	31.1	21.6	11.5	4.47	1.03	0.00	1.03	4.53
85	27.2	20.8	20.5	13.0	0.00	0.00	0.00	0.00	0.00	0.00	0.00	0.00	0.00	0.00	0.00	0.00	0.00	0.00	0.00
90	0.00	0.00	0.00	0.00	0.00	0.00	0.00	0.00	0.00	0.00	0.00	0.00	0.00	0.00	0.00	0.00	0.00	0.00	0.00

H(□) Range:-90 - 90DEG
H(□) Interval: 1.0DEG
Test Speed: HIGH
Temperature:25.3DEG
Operators:DAMIN
Test Date:2021-08-19

V(B) Range:-75 - 75DEG
V(B) Interval: 5.0DEG
Test System:EVERFINE GO-2000A_V1 SYSTEM V2.0.290
Humidity:65.0%
Test Distance:7.500m [K=1.1133]
Remarks:

LUMINOUS DISTRIBUTION INTENSITY DATA

Test:U:220.71V I:0.1748A P:32.764W PF:0.9602 Freq:50.00Hz Lamp Flux:4286.08x1 lm		
NAME: GLM-SPL12030-32W-D	TYPE:LED	WEIGHT:
SPEC.:	DIM.:	SERIAL No.:1
MFR.: EVERFINE	SUR.:	Shielding Angle:

Table--4

UNIT: cd

C (DEG) □ (DEG)	285	290	295	300	305	310	315	320	325	330	335	340	345	350	355				
0	2082	2082	2082	2082	2082	2082	2082	2082	2082	2082	2082	2082	2082	2082	2082				
5	2061	2061	2061	2062	2062	2062	2063	2063	2064	2065	2066	2067	2069	2070	2072				
10	2038	2038	2037	2036	2035	2034	2034	2033	2033	2033	2034	2035	2037	2039	2042				
15	2015	2012	2009	2006	2003	1999	1996	1993	1991	1989	1988	1988	1989	1992	1996				
20	1945	1945	1945	1946	1948	1952	1951	1944	1938	1933	1929	1927	1927	1928	1932				
25	1868	1866	1863	1861	1859	1860	1862	1867	1875	1864	1855	1849	1846	1846	1849				
30	1791	1784	1777	1769	1762	1756	1752	1752	1756	1765	1764	1751	1743	1740	1743				
35	1577	1587	1605	1629	1655	1639	1624	1611	1601	1602	1619	1625	1609	1602	1606				
40	1331	1334	1344	1362	1389	1419	1445	1418	1381	1368	1381	1417	1407	1392	1397				
45	1081	1074	1076	1090	1111	1129	1135	1118	1092	1062	1055	1068	1092	1060	1060				
50	837	837	835	831	828	841	830	796	759	706	690	709	741	752	766				
55	604	625	641	648	641	615	545	511	481	452	442	465	500	539	555				
60	379	425	460	480	483	456	397	341	290	283	287	302	342	386	401				
65	293	320	336	343	342	327	291	249	206	175	178	213	253	292	311				
70	233	250	254	251	248	236	211	179	152	142	143	170	212	236	244				
75	170	177	168	158	160	160	147	128	116	125	137	148	164	163	152				
80	11.4	20.5	28.8	36.6	49.9	66.8	80.5	88.8	79.0	72.0	77.4	86.3	80.3	69.9	62.6				
85	0.00	0.00	0.00	0.00	0.00	0.00	0.00	0.00	0.00	0.00	0.00	7.09	8.63	10.9	14.0	14.2			
90	0.00	0.00	0.00	0.00	0.00	0.00	0.00	0.00	0.00	0.00	0.00	0.00	0.00	0.00	0.00				

H(□) Range:-90 - 90DEG
H(□) Interval: 1.0DEG
Test Speed: HIGH
Temperature:25.3DEG
Operators:DAMIN
Test Date:2021-08-19

V(B) Range:-75 - 75DEG
V(B) Interval: 5.0DEG
Test System:EVERFINE GO-2000A_V1 SYSTEM V2.0.290
Humidity:65.0%
Test Distance:7.500m [K=1.1133]
Remarks: