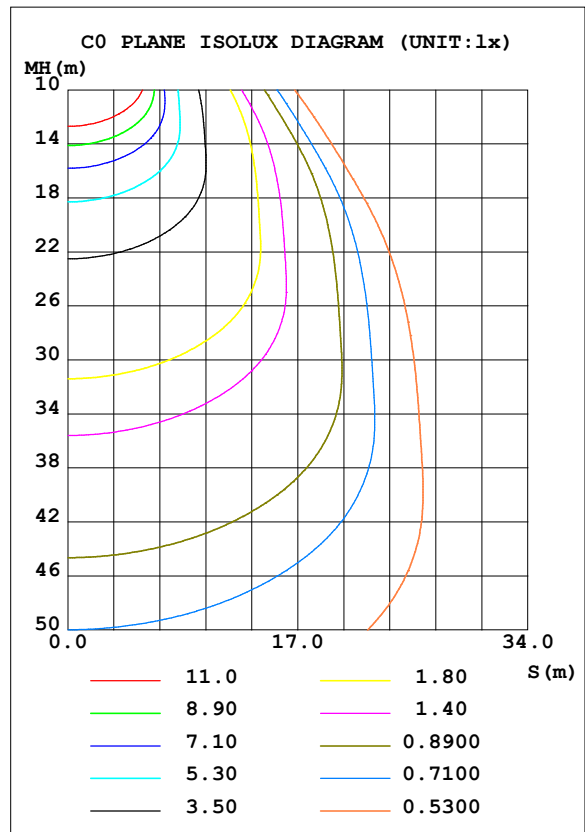
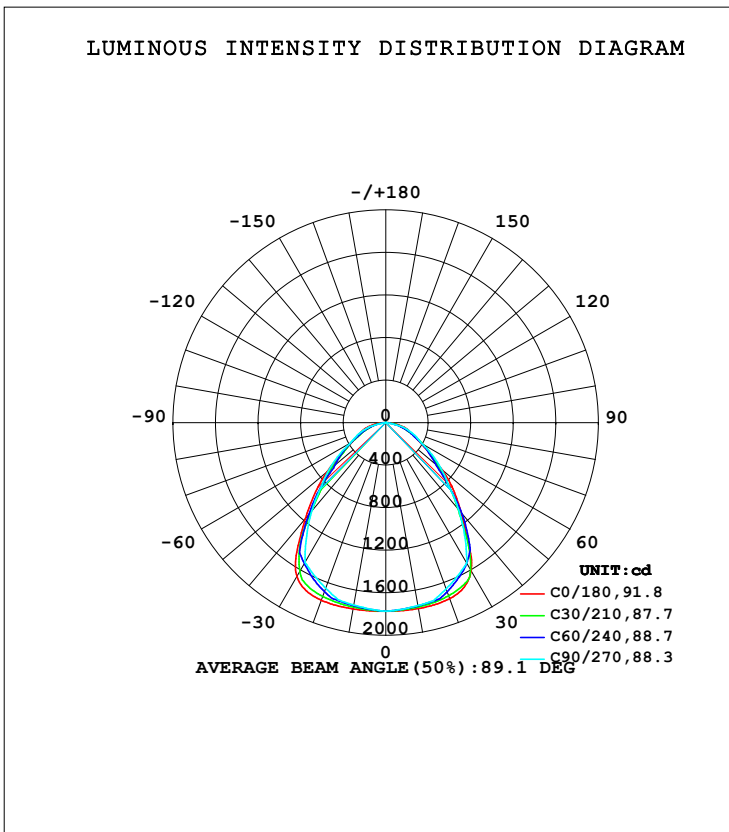


LUMINAIRE PHOTOMETRIC TEST REPORT

Test:U:222.07V I:0.1334A P:27.222W PF:0.9360 Freq:49.99Hz Lamp Flux:3843.22x1 lm		
NAME: GLM-SPL6262-27W-D	TYPE:LED	WEIGHT:
SPEC.:	DIM.:	SERIAL No.:1
MFR.: EVERFINE	SUR.:	Shielding Angle:

DATA OF LAMP		PHOTOMETRIC DATA Eff: 141.18 lm/W			
MODEL		I _{max} (cd)	1781	S/MH (C0/180)	1.28
NOMINAL POWER (W)		LOR (%)	100.0	S/MH (C90/270)	1.23
RATED VOLTAGE (V)	220.0	TOTAL FLUX (lm)	3843.2	<input type="checkbox"/> UP, DN (C0-180)	0.0, 49.9
NOMINAL FLUX (lm)	3843.22	CIE CLASS	DIRECT	<input type="checkbox"/> UP, DN (C180-360)	0.0, 50.1
LAMPS INSIDE	1	<input type="checkbox"/> up (%)	0.0	CIBSE SHR NOM	1.25
TEST VOLTAGE (V)	220	<input type="checkbox"/> down (%)	100.0	CIBSE SHR MAX	1.25



H Range: -90 - 90DEG
H Interval: 1.0DEG
Test Speed: HIGH
Temperature: 25.3DEG
Operators:
Test Date: 23 September 2021

V (B) Range: -75 - 75DEG
V (B) Interval: 5.0DEG
Test System: EVERFINE GO-2000B_V1 SYSTEM V2.0.366
Humidity: 65.0%
Test Distance: 7.500m [K=1.0867]
Remarks:

ZONAL FLUX DIAGRAM

ZONAL FLUX DIAGRAM:

mm	C0	C45	C90	C135	C180	C225	C270	C315	mm	□ zone	□ total	%lum, lamp
10	1775	1754	1746	1757	1779	1753	1741	1750	0- 10	168.2	168.2	4.38,4.38
20	1760	1728	1663	1732	1776	1727	1656	1722	10- 20	493.0	661.2	17.2,17.2
30	1607	1527	1524	1539	1671	1546	1518	1524	20- 30	761.5	1423	37,37
40	1102	1038	1065	1097	1177	1119	1082	1045	30- 40	839.5	2262	58.9,58.9
50	695.0	597.7	686.3	616.7	723.3	630.9	704.0	597.6	40- 50	660.0	2922	76,76
60	376.3	350.7	388.5	348.8	367.8	353.9	383.2	348.8	50- 60	457.1	3379	87.9,87.9
70	236.1	208.9	242.6	201.4	238.4	191.3	234.6	201.0	60- 70	293.6	3673	95.6,95.6
80	112.1	66.58	0	64.69	113.1	59.11	0	64.54	70- 80	154.6	3827	99.6,99.6
90	0	0	0	0	0	0	0	0	80- 90	15.86	3843	100,100
100									90-100			
110									100-110			
120									110-120			
130									120-130			
140									130-140			
150									140-150			
160									150-160			
170									160-170			
180									170-180			
DEG	LUMINOUS INTENSITY:cd									UNIT:lm		

Conical surface Flux(90deg): 2620.7 lm

%lum = 68.2%

%lamp = 68.2%

Conical surface Flux(120deg): 3379.2 lm

%lum = 87.9%

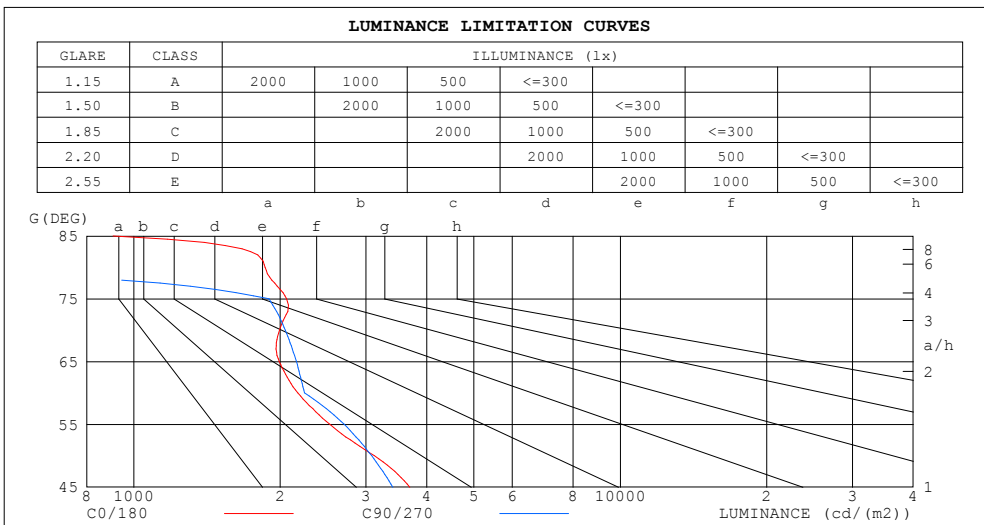
%lamp = 87.9%

H(□) Range:-90 - 90DEG
H(□) Interval: 1.0DEG
Test Speed: HIGH
Temperature:25.3DEG
Operators:
Test Date:23 September 2021

V(B) Range:-75 - 75DEG
V(B) Interval: 5.0DEG
Test System:EVERFINE GO-2000B_V1 SYSTEM V2.0.366
Humidity:65.0%
Test Distance:7.500m [K=1.0867]
Remarks:

LUMINANCE LIMITATION CURVES

Test:U:222.07V I:0.1334A P:27.222W PF:0.9360 Freq:49.99Hz Lamp Flux:3843.22x1 lm		
NAME: GLM-SPL6262-27W-D	TYPE:LED	WEIGHT:
SPEC.:	DIM.:	SERIAL No.:1
MFR.: EVERFINE	SUR.:	Shielding Angle:



LUMINANCE cd/(m2)		
G (DEG)	C0/180	C90/270
85	907	0
80	1863	0
75	2061	1895
70	1993	2048
65	1990	2159
60	2173	2243
55	2527	2706
50	3121	3082
45	3695	3408

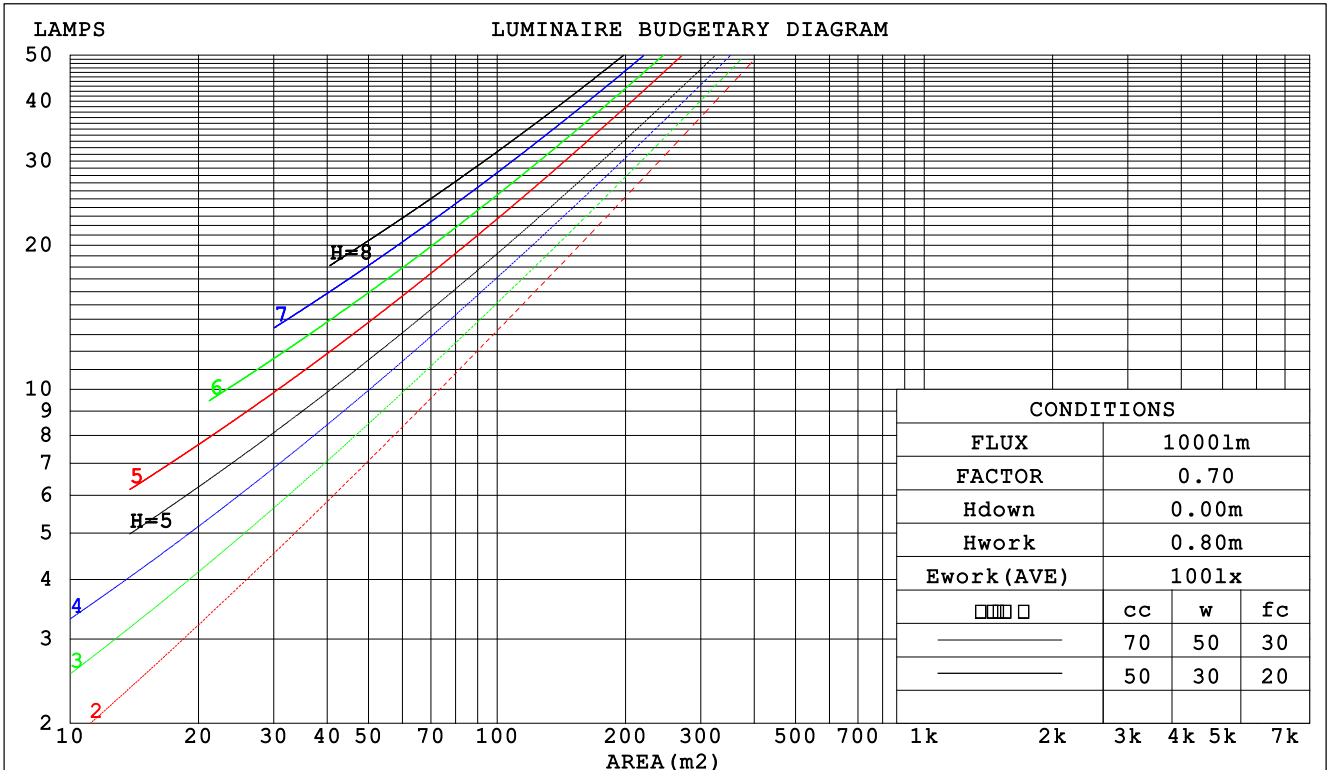
H(□) Range:-90 - 90DEG
H(□) Interval: 1.0DEG
Test Speed: HIGH
Temperature:25.3DEG
Operators:
Test Date:23 September 2021

V(B) Range:-75 - 75DEG
V(B) Interval: 5.0DEG
Test System:EVERFINE GO-2000B_V1 SYSTEM V2.0.366
Humidity:65.0%
Test Distance:7.500m [K=1.0867]
Remarks:

CU AND LUMINAIRE BUDGETARY ESTIMATE DIAGRAM

Test:U:222.07V I:0.1334A P:27.222W PF:0.9360 Freq:49.99Hz Lamp Flux:3843.22x1 lm		
NAME: GLM-SPL6262-27W-D	TYPE:LED	WEIGHT:
SPEC.:	DIM.:	SERIAL No.:1
MFR.: EVERFINE	SUR.:	Shielding Angle:

□cc	80%			70%			50%			30%			10%			0
□w	50%	30%	10%	50%	30%	10%	50%	30%	10%	50%	30%	10%	50%	30%	10%	0
□fc	20%			20%			20%			20%			20%			0
RCR	RCR:Room Cavity Ratio						Coefficients of Utilization(CU)									
0.0	1.19	1.19	1.19	1.16	1.16	1.16	1.11	1.11	1.11	1.06	1.06	1.06	1.02	1.02	1.02	1.00
1.0	1.07	1.03	.00	1.04	1.01	.98	1.00	.98	.95	.96	.94	.92	.93	.91	.89	.87
2.0	.95	.89	.84	.93	.88	.83	.90	.85	.81	.86	.83	.79	.83	.80	.78	.76
3.0	.85	.78	.72	.83	.77	.71	.80	.75	.70	.78	.73	.69	.75	.71	.68	.66
4.0	.76	.69	.63	.75	.68	.62	.73	.66	.61	.70	.65	.61	.68	.64	.60	.58
5.0	.69	.61	.55	.68	.60	.55	.66	.59	.54	.64	.58	.54	.62	.57	.53	.51
6.0	.63	.55	.49	.62	.54	.49	.60	.53	.48	.59	.53	.48	.57	.52	.47	.46
7.0	.57	.49	.44	.57	.49	.44	.55	.48	.43	.54	.48	.43	.53	.47	.43	.41
8.0	.53	.45	.40	.52	.45	.39	.51	.44	.39	.50	.44	.39	.49	.43	.39	.37
9.0	.49	.41	.36	.48	.41	.36	.47	.40	.36	.46	.40	.36	.45	.39	.35	.34
10.0	.45	.38	.33	.45	.38	.33	.44	.37	.33	.43	.37	.33	.42	.36	.32	.31



H(□) Range:-90 - 90DEG
H(□) Interval: 1.0DEG
Test Speed: HIGH
Temperature:25.3DEG
Operators:
Test Date:23 September 2021

V(B) Range:-75 - 75DEG
V(B) Interval: 5.0DEG
Test System:EVERFINE GO-2000B_V1 SYSTEM V2.0.366
Humidity:65.0%
Test Distance:7.500m [K=1.0867]
Remarks:

WEC AND CCEC

Test:U:222.07V I:0.1334A P:27.222W PF:0.9360 Freq:49.99Hz Lamp Flux:3843.22x1 lm		
NAME: GLM-SPL6262-27W-D	TYPE:LED	WEIGHT:
SPEC.:	DIM.:	SERIAL No.:1
MFR.: EVERFINE	SUR.:	Shielding Angle:

<input type="checkbox"/> cc	80%	70%	50%	30%	10%	0
<input type="checkbox"/> w	50% 30% 10%	50% 30% 10%	50% 30% 10%	50% 30% 10%	50% 30% 10%	0
<input type="checkbox"/> fc	20%	20%	20%	20%	20%	0
RCR	RCR:Room Cavity Ratio		Wall Exitance Coefficients (WEC)			
0.0						
1.0	.258 .147 .046	.251 .143 .045	.238 .137 .044	.226 .130 .042	.215 .125 .040	
2.0	.249 .137 .042	.243 .134 .041	.232 .129 .040	.221 .124 .039	.212 .120 .038	
3.0	.235 .125 .037	.230 .123 .037	.220 .119 .036	.210 .115 .035	.202 .112 .035	
4.0	.220 .114 .034	.215 .113 .033	.207 .110 .033	.198 .107 .032	.191 .104 .032	
5.0	.206 .105 .030	.202 .104 .030	.194 .101 .030	.187 .099 .029	.180 .096 .029	
6.0	.193 .097 .028	.189 .096 .028	.183 .094 .027	.176 .092 .027	.170 .090 .027	
7.0	.181 .090 .025	.178 .089 .025	.172 .087 .025	.166 .085 .025	.161 .084 .025	
8.0	.171 .083 .023	.168 .083 .023	.162 .081 .023	.157 .080 .023	.152 .078 .023	
9.0	.161 .078 .022	.159 .077 .022	.154 .076 .022	.149 .075 .021	.145 .073 .021	
10.0	.153 .073 .020	.150 .073 .020	.146 .071 .020	.142 .070 .020	.138 .069 .020	

<input type="checkbox"/> cc	80%	70%	50%	30%	10%	0
<input type="checkbox"/> w	50% 30% 10%	50% 30% 10%	50% 30% 10%	50% 30% 10%	50% 30% 10%	0
<input type="checkbox"/> fc	20%	20%	20%	20%	20%	0
RCR	RCR:Room Cavity Ratio		Ceiling Cavity Exitance Coefficients (CCEC)			
0.0	.190 .190 .190	.163 .163 .163	.111 .111 .111	.064 .064 .064	.020 .020 .020	
1.0	.177 .157 .138	.151 .134 .119	.103 .092 .082	.060 .054 .048	.019 .017 .015	
2.0	.167 .132 .103	.143 .114 .089	.098 .079 .062	.056 .046 .036	.018 .015 .012	
3.0	.158 .114 .079	.135 .098 .069	.093 .068 .048	.054 .040 .028	.017 .013 .009	
4.0	.150 .100 .063	.128 .087 .054	.088 .060 .038	.051 .035 .023	.016 .012 .007	
5.0	.142 .090 .051	.122 .078 .044	.084 .054 .031	.049 .032 .019	.016 .010 .006	
6.0	.135 .081 .042	.116 .070 .037	.080 .049 .026	.047 .029 .015	.015 .009 .005	
7.0	.129 .074 .036	.111 .064 .031	.077 .045 .022	.044 .026 .013	.014 .009 .004	
8.0	.123 .068 .031	.106 .059 .027	.073 .042 .019	.043 .024 .011	.014 .008 .004	
9.0	.117 .063 .027	.101 .055 .023	.070 .039 .017	.041 .023 .010	.013 .007 .003	
10.0	.112 .059 .024	.097 .051 .021	.067 .036 .015	.039 .021 .009	.013 .007 .003	

H(□) Range:-90 - 90DEG
H(□) Interval: 1.0DEG
Test Speed: HIGH
Temperature:25.3DEG
Operators:
Test Date:23 September 2021

V(B) Range:-75 - 75DEG
V(B) Interval: 5.0DEG
Test System:EVERFINE GO-2000B_V1 SYSTEM V2.0.366
Humidity:65.0%
Test Distance:7.500m [K=1.0867]
Remarks:

UGR(Unified Glare Rating) Table

Test:U:222.07V I:0.1334A P:27.222W PF:0.9360 Freq:49.99Hz Lamp Flux:3843.22x1 lm										
NAME: GLM-SPL6262-27W-D					TYPE:LED			WEIGHT:		
SPEC.:					DIM.:			SERIAL No.:1		
MFR.: EVERFINE					SUR.:			Shielding Angle:		
ceiling/cavity	0.7	0.7	0.5	0.5	0.3	0.7	0.7	0.5	0.5	0.3
walls	0.5	0.3	0.5	0.3	0.3	0.5	0.3	0.5	0.3	0.3
working plane	0.2	0.2	0.2	0.2	0.2	0.2	0.2	0.2	0.2	0.2
Room dimensions	Viewed crosswise					Viewed endwise				
x = 2H y = 2H	15.6	17.0	15.9	17.2	17.4	15.6	16.9	15.8	17.1	17.3
3H	16.6	17.9	16.9	18.1	18.3	16.7	17.9	17.0	18.2	18.4
4H	17.2	18.4	17.5	18.6	18.8	17.2	18.3	17.5	18.6	18.8
6H	17.5	18.7	17.9	18.9	19.2	17.2	18.3	17.5	18.6	18.8
8H	17.6	18.7	18.0	19.0	19.3	17.2	18.2	17.5	18.5	18.8
12H	17.6	18.7	18.0	18.9	19.2	17.1	18.1	17.4	18.4	18.7
4H 2H	15.9	17.1	16.2	17.3	17.6	15.9	17.0	16.2	17.3	17.5
3H	17.1	18.1	17.5	18.4	18.7	17.2	18.2	17.5	18.5	18.8
4H	17.8	18.7	18.1	19.0	19.4	17.8	18.7	18.1	19.0	19.3
6H	18.3	19.1	18.7	19.4	19.8	17.8	18.7	18.2	19.0	19.4
8H	18.4	19.1	18.8	19.5	19.9	17.8	18.6	18.2	18.9	19.3
12H	18.4	19.1	18.8	19.5	19.9	17.7	18.4	18.2	18.8	19.2
8H 4H	17.9	18.7	18.3	19.0	19.4	17.9	18.6	18.3	19.0	19.4
6H	18.5	19.2	19.0	19.6	20.0	18.0	18.6	18.4	19.0	19.4
8H	18.7	19.3	19.2	19.7	20.1	17.9	18.5	18.4	18.9	19.4
12H	18.8	19.2	19.2	19.7	20.1	17.9	18.4	18.4	18.8	19.3
12H 4H	17.9	18.6	18.3	19.0	19.4	17.9	18.6	18.3	18.9	19.3
6H	18.5	19.1	19.0	19.5	19.9	18.0	18.5	18.4	19.0	19.4
8H	18.7	19.2	19.2	19.6	20.1	17.9	18.4	18.4	18.9	19.3
Variations with the observer position at spacings:										
S = 1.0H	+ 0.4 / - 0.5					+ 0.5 / - 0.5				
1.5H	+ 0.2 / - 0.2					+ 0.3 / - 0.3				
2.0H	+ 0.8 / - 0.8					+ 0.7 / - 0.7				

CIE Pub.117, 3843 lm Total Lamp Luminous Flux Corrected (8log(F/F0) = 4.7)

H(□) Range:-90 - 90DEG	V(B) Range:-75 - 75DEG
H(□) Interval: 1.0DEG	V(B) Interval: 5.0DEG
Test Speed: HIGH	Test System:EVERFINE GO-2000B_V1 SYSTEM V2.0.366
Temperature:25.3DEG	Humidity:65.0%
Operators:	Test Distance:7.500m [K=1.0867]
Test Date:23 September 2021	Remarks:

UTILIZATION FACTORS TABLE

Test:U:222.07V I:0.1334A P:27.222W PF:0.9360 Freq:49.99Hz Lamp Flux:3843.22x1 lm		
NAME: GLM-SPL6262-27W-D	TYPE:LED	WEIGHT:
SPEC.:	DIM.:	SERIAL No.:1
MFR.: EVERFINE	SUR.:	Shielding Angle:

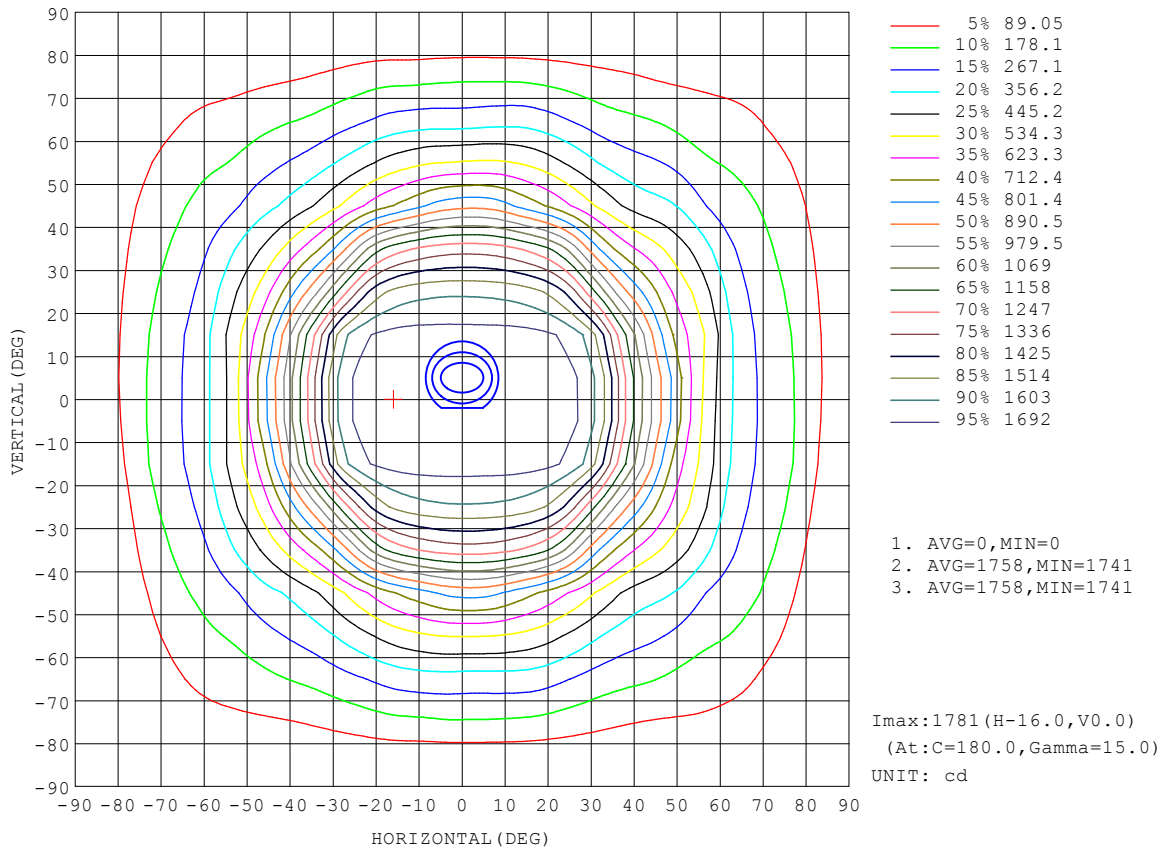
REFLECTANCE										
Ceiling	0.8	0.8	0.8	0.7	0.7	0.7	0.5	0.5	0.5	0
Walls	0.7	0.5	0.3	0.7	0.5	0.3	0.7	0.5	0.3	0
Working plane	0.2	0.2	0.2	0.2	0.2	0.2	0.2	0.2	0.2	0
ROOM INDEX	UTILIZATION FACTORS (PERCENT) $k(RI) \times RCR = 5$									
k = 0.60	66	56	50	65	56	50	64	55	49	44
0.80	76	66	59	75	65	59	73	65	59	53
1.00	83	74	68	82	73	68	80	74	67	61
1.25	90	81	75	88	80	75	86	79	74	68
1.50	94	86	80	93	85	80	90	83	79	72
2.00	100	93	88	98	92	87	95	90	85	78
2.50	103	97	92	101	95	91	97	93	89	81
3.00	106	100	96	104	99	95	100	96	92	85
4.00	109	104	101	107	103	99	103	99	97	88
5.00	111	107	104	109	105	102	104	102	99	91
ROOM INDEX	UF(total)									Direct
According to DIN EN 13032-2 2004			Suspended				SHRNOM = 1.25			

H(□) Range:-90 - 90DEG
H(□) Interval: 1.0DEG
Test Speed: HIGH
Temperature:25.3DEG
Operators:
Test Date:23 September 2021

V(B) Range:-75 - 75DEG
V(B) Interval: 5.0DEG
Test System:EVERFINE GO-2000B_V1 SYSTEM V2.0.366
Humidity:65.0%
Test Distance:7.500m [K=1.0867]
Remarks:

ISOCANDELA DIAGRAM

Test:U:222.07V I:0.1334A P:27.222W PF:0.9360 Freq:49.99Hz Lamp Flux:3843.22x1 lm		
NAME: GLM-SPL6262-27W-D	TYPE:LED	WEIGHT:
SPEC.:	DIM.:	SERIAL No.:1
MFR.: EVERFINE	SUR.:	Shielding Angle:

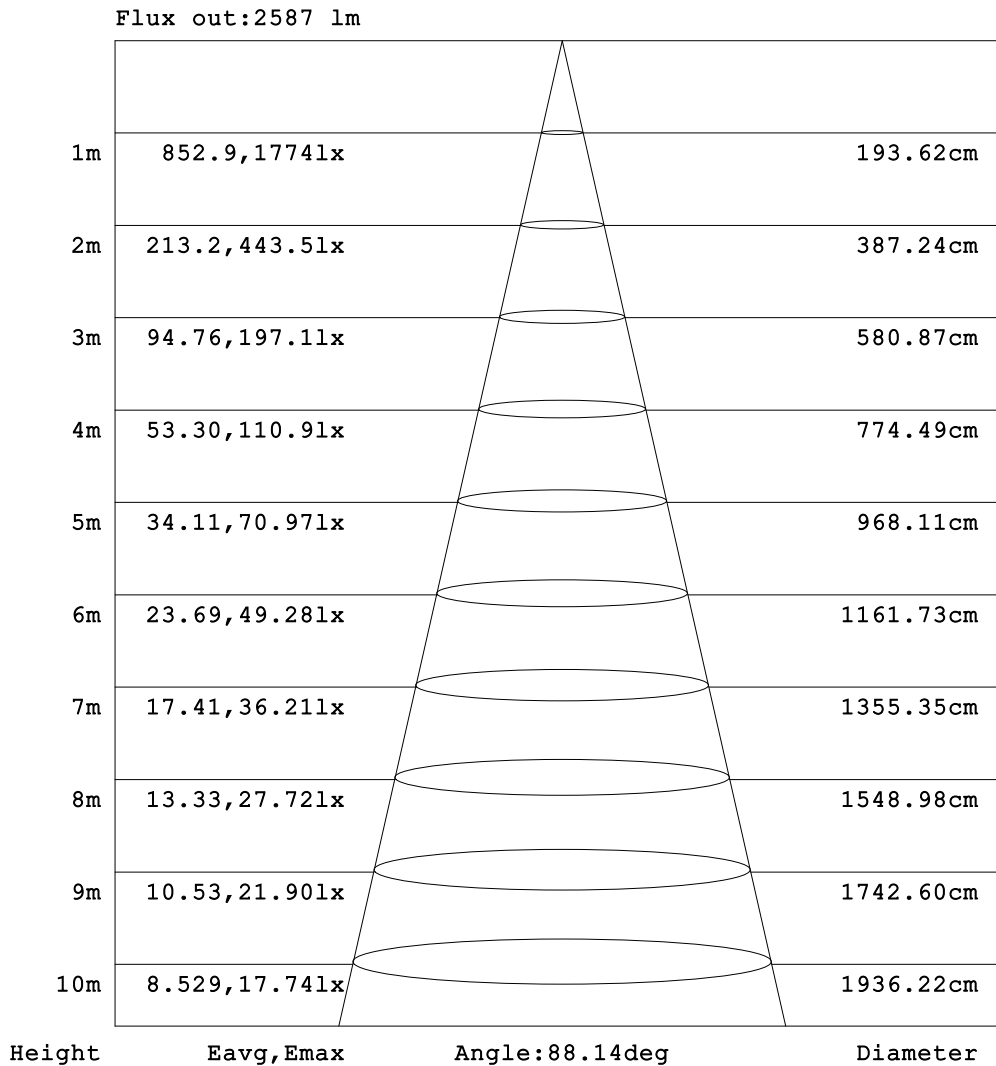


H(□) Range:-90 - 90DEG
 H(□) Interval: 1.0DEG
 Test Speed: HIGH
 Temperature:25.3DEG
 Operators:
 Test Date:23 September 2021

V(B) Range:-75 - 75DEG
 V(B) Interval: 5.0DEG
 Test System:EVERFINE GO-2000B_V1 SYSTEM V2.0.366
 Humidity:65.0%
 Test Distance:7.500m [K=1.0867]
 Remarks:

AAI Figure

Test:U:222.07V I:0.1334A P:27.222W PF:0.9360 Freq:49.99Hz Lamp Flux:3843.22x1 lm		
NAME: GLM-SPL6262-27W-D	TYPE:LED	WEIGHT:
SPEC.:	DIM.:	SERIAL No.:1
MFR.: EVERFINE	SUR.:	Shielding Angle:



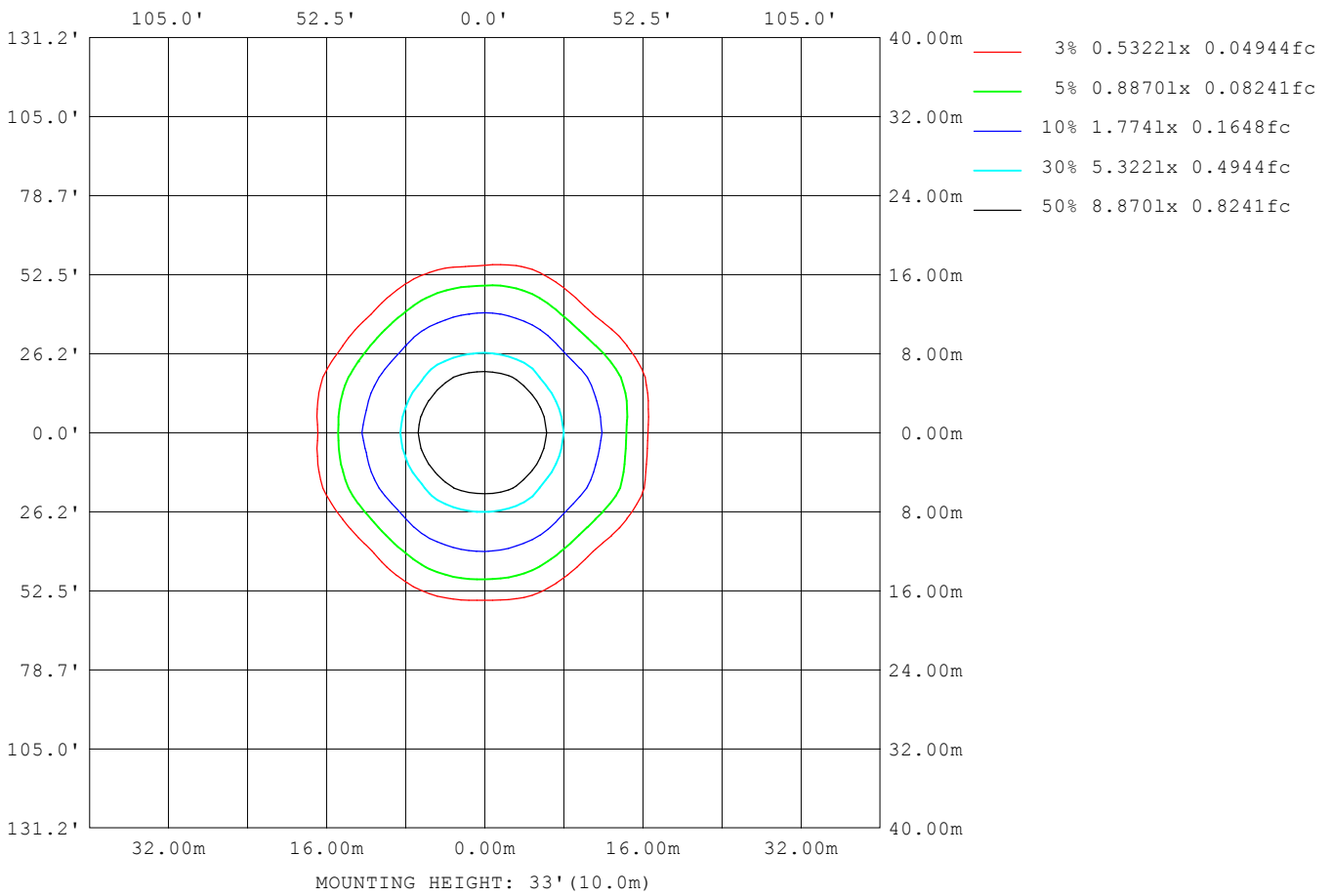
Note:The Curves indicate the illuminated area and the average illumination when the luminaire is at different distance.

H(□) Range:-90 - 90DEG
H(□) Interval: 1.0DEG
Test Speed: HIGH
Temperature:25.3DEG
Operators:
Test Date:23 September 2021

V(B) Range:-75 - 75DEG
V(B) Interval: 5.0DEG
Test System:EVERFINE GO-2000B_V1 SYSTEM V2.0.366
Humidity:65.0%
Test Distance:7.500m [K=1.0867]
Remarks:

ISOLUX DIAGRAM

Test:U:222.07V I:0.1334A P:27.222W PF:0.9360 Freq:49.99Hz Lamp Flux:3843.22x1 lm		
NAME: GLM-SPL6262-27W-D	TYPE:LED	WEIGHT:
SPEC.:	DIM.:	SERIAL No.:1
MFR.: EVERFINE	SUR.:	Shielding Angle:



H(□) Range:-90 - 90DEG
H(□) Interval: 1.0DEG
Test Speed: HIGH
Temperature:25.3DEG
Operators:
Test Date:23 September 2021

V(B) Range:-75 - 75DEG
V(B) Interval: 5.0DEG
Test System:EVERFINE GO-2000B_V1 SYSTEM V2.0.366
Humidity:65.0%
Test Distance:7.500m [K=1.0867]
Remarks:

LED Avg.L Report

Test:U:222.07V I:0.1334A P:27.222W PF:0.9360 Freq:49.99Hz Lamp Flux:3843.22x1 lm		
NAME: GLM-SPL6262-27W-D	TYPE:LED	WEIGHT:
SPEC.:	DIM.:	SERIAL No.:1
MFR.: EVERFINE	SUR.:	Shielding Angle:

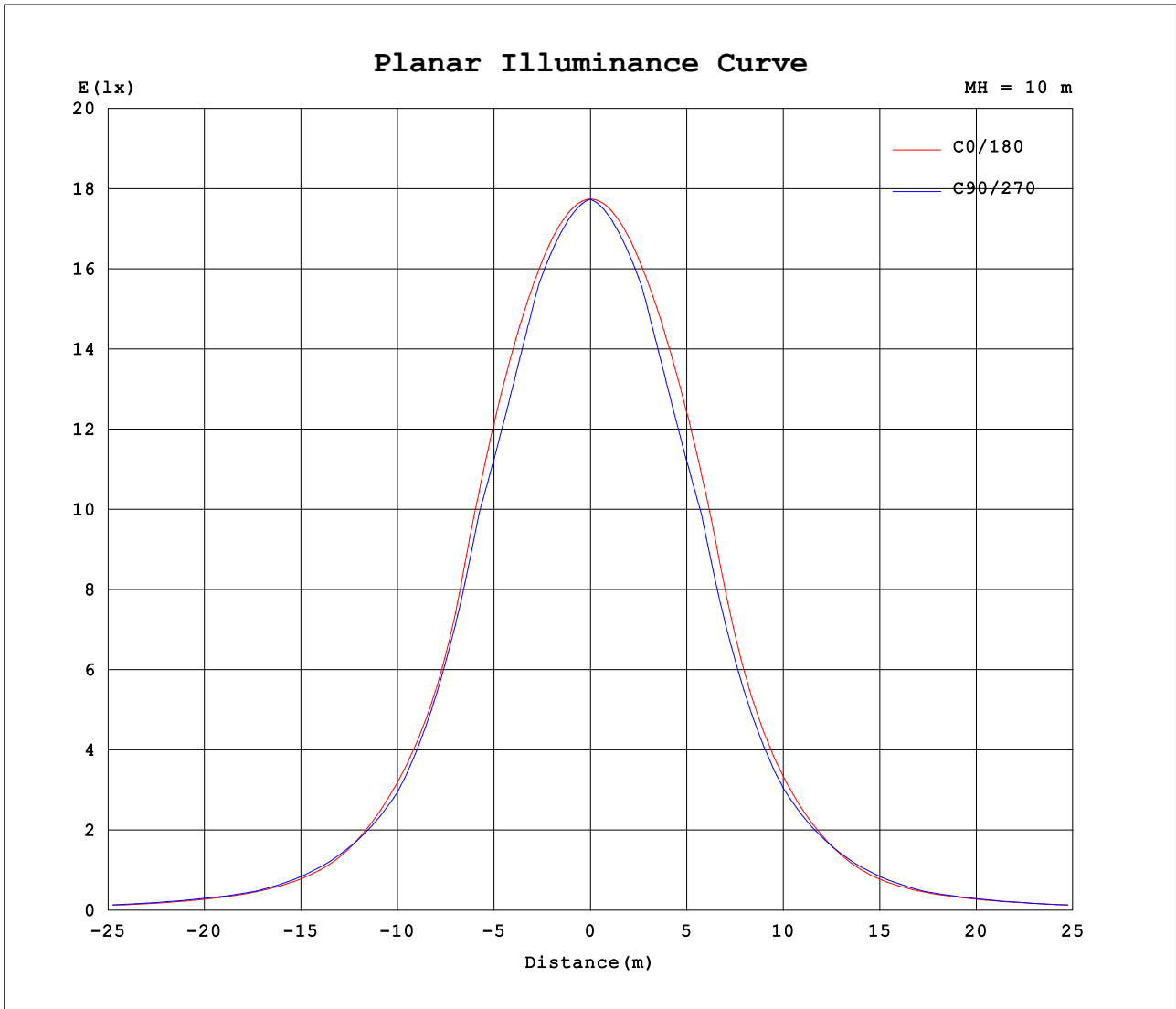
AvgL	cd/m2
L_0~180 (65) av	2007
L_0~180 (75) av	2079
L_0~180 (85) av	1012
L_90~270 (65) av	2131
L_90~270 (75) av	1841
L_90~270 (85) av	0
L_45 (65) av	1850
L_45 (75) av	1503
L_45 (85) av	0

Standard: GB/T 29293-2012

H(□) Range:-90 - 90DEG
H(□) Interval: 1.0DEG
Test Speed: HIGH
Temperature:25.3DEG
Operators:
Test Date:23 September 2021

V(B) Range:-75 - 75DEG
V(B) Interval: 5.0DEG
Test System:EVERFINE GO-2000B_V1 SYSTEM V2.0.366
Humidity:65.0%
Test Distance:7.500m [K=1.0867]
Remarks:

Planar Illuminance Curve



H(□) Range:-90 - 90DEG
 H(□) Interval: 1.0DEG
 Test Speed: HIGH
 Temperature:25.3DEG
 Operators:
 Test Date:23 September 2021

V(B) Range:-75 - 75DEG
 V(B) Interval: 5.0DEG
 Test System:EVERFINE GO-2000B_V1 SYSTEM V2.0.366
 Humidity:65.0%
 Test Distance:7.500m [K=1.0867]
 Remarks:

LUMINOUS DISTRIBUTION INTENSITY DATA

Test:U:222.07V I:0.1334A P:27.222W PF:0.9360 Freq:49.99Hz Lamp Flux:3843.22x1 lm		
NAME: GLM-SPL6262-27W-D	TYPE:LED	WEIGHT:
SPEC.:	DIM.:	SERIAL No.:1
MFR.: EVERFINE	SUR.:	Shielding Angle:

Table--1

UNIT: cd

C (DEG) □ (DEG)	0	5	10	15	20	25	30	35	40	45	50	55	60	65	70	75	80	85	90
0	1774	1774	1774	1774	1774	1774	1774	1774	1774	1774	1774	1774	1774	1774	1774	1774	1774	1774	1774
5	1774	1773	1771	1770	1769	1768	1767	1766	1765	1764	1763	1762	1762	1761	1761	1761	1760	1760	1760
10	1775	1772	1769	1767	1764	1762	1760	1758	1756	1754	1752	1751	1749	1748	1747	1747	1746	1746	1746
15	1773	1769	1765	1761	1757	1754	1750	1747	1745	1743	1741	1739	1737	1735	1734	1733	1732	1732	1732
20	1760	1755	1750	1745	1739	1735	1732	1731	1730	1728	1719	1704	1692	1682	1675	1669	1665	1663	1663
25	1721	1715	1711	1700	1692	1693	1698	1703	1673	1650	1633	1623	1615	1608	1603	1599	1596	1594	1594
30	1607	1604	1599	1578	1584	1610	1595	1550	1527	1527	1528	1527	1523	1522	1522	1522	1523	1523	1524
35	1347	1362	1349	1322	1378	1382	1329	1317	1327	1336	1352	1375	1368	1350	1330	1315	1304	1297	1295
40	1102	1114	1086	1098	1119	1061	1055	1056	1029	1038	1092	1122	1113	1093	1075	1066	1064	1064	1065
45	905	910	855	899	862	854	837	794	798	819	828	835	836	831	823	823	831	836	835
50	695	701	668	676	671	679	651	639	616	598	606	612	618	634	648	661	675	684	686
55	502	520	535	525	551	538	524	487	459	447	459	473	493	513	529	537	540	539	538
60	376	383	406	424	429	424	397	376	357	351	359	374	387	400	411	413	404	393	389
65	291	293	296	308	315	296	293	289	287	280	273	271	285	305	321	327	323	317	316
70	236	242	242	238	229	216	211	207	205	209	205	205	213	226	239	246	246	244	243
75	185	186	178	173	164	162	150	143	142	139	135	136	142	152	161	168	169	170	170
80	112	104	95.6	94.9	92.1	96.3	91.9	88.9	82.0	66.6	53.9	43.8	35.1	26.6	18.5	11.0	5.00	1.26	0.00
85	27.4	20.1	20.3	15.8	25.3	16.6	0.00	0.00	0.00	0.00	0.00	0.00	0.00	0.00	0.00	0.00	0.00	0.00	0.00
90	0.00	0.00	0.00	0.00	0.00	0.00	0.00	0.00	0.00	0.00	0.00	0.00	0.00	0.00	0.00	0.00	0.00	0.00	0.00

H(□) Range:-90 - 90DEG
H(□) Interval: 1.0DEG
Test Speed: HIGH
Temperature:25.3DEG
Operators:
Test Date:23 September 2021

V(B) Range:-75 - 75DEG
V(B) Interval: 5.0DEG
Test System:EVERFINE GO-2000B_V1 SYSTEM V2.0.366
Humidity:65.0%
Test Distance:7.500m [K=1.0867]
Remarks:

LUMINOUS DISTRIBUTION INTENSITY DATA

Test:U:222.07V I:0.1334A P:27.222W PF:0.9360 Freq:49.99Hz Lamp Flux:3843.22x1 lm		
NAME: GLM-SPL6262-27W-D	TYPE:LED	WEIGHT:
SPEC.:	DIM.:	SERIAL No.:1
MFR.: EVERFINE	SUR.:	Shielding Angle:

Table--2

UNIT: cd

C (DEG) □ (DEG)	95	100	105	110	115	120	125	130	135	140	145	150	155	160	165	170	175	180	185
0	1774	1774	1774	1774	1774	1774	1774	1774	1774	1774	1774	1774	1774	1774	1774	1774	1774	1774	1774
5	1761	1761	1761	1762	1762	1763	1764	1765	1766	1767	1768	1769	1770	1771	1772	1773	1775	1776	1774
10	1747	1747	1748	1749	1750	1752	1753	1755	1757	1759	1761	1764	1766	1768	1771	1774	1776	1779	1776
15	1733	1734	1735	1736	1738	1739	1742	1744	1747	1749	1753	1756	1759	1763	1767	1772	1776	1781	1776
20	1664	1667	1672	1678	1686	1696	1708	1722	1732	1735	1738	1742	1746	1750	1754	1760	1768	1776	1767
25	1595	1597	1599	1604	1610	1618	1630	1645	1662	1683	1708	1710	1714	1718	1719	1721	1735	1752	1735
30	1526	1527	1527	1527	1527	1527	1525	1529	1539	1561	1584	1614	1631	1634	1629	1614	1633	1671	1634
35	1296	1301	1312	1330	1356	1385	1409	1380	1344	1326	1356	1396	1408	1411	1422	1383	1386	1450	1388
40	1066	1068	1072	1083	1100	1114	1116	1112	1097	1068	1055	1088	1131	1131	1140	1132	1114	1177	1115
45	830	822	818	827	844	861	862	834	803	809	827	835	864	893	874	903	869	945	874
50	686	679	667	656	640	614	601	609	617	614	624	656	652	663	654	668	660	723	665
55	540	539	535	530	519	502	481	453	429	451	477	484	511	500	516	501	487	503	490
60	396	407	412	410	399	384	368	356	349	342	342	373	379	405	382	381	372	368	371
65	321	324	323	317	304	293	283	272	268	268	274	268	278	283	295	295	295	296	294
70	246	246	245	241	228	217	205	199	201	203	198	197	204	206	210	218	231	238	228
75	170	165	166	162	153	146	139	136	137	136	135	141	148	149	147	155	172	188	174
80	1.27	4.88	10.9	18.5	26.5	34.9	43.4	52.8	64.7	78.5	84.5	89.8	91.1	87.8	80.4	74.2	78.4	113	101
85	0.00	0.00	0.00	0.00	0.00	0.00	0.00	0.00	0.00	0.00	0.00	0.00	15.8	22.5	18.6	14.8	3.42	33.7	20.5
90	0.00	0.00	0.00	0.00	0.00	0.00	0.00	0.00	0.00	0.00	0.00	0.00	0.00	0.00	0.00	0.00	0.00	0.00	0.00

H(□) Range:-90 - 90DEG
 H(□) Interval: 1.0DEG
 Test Speed: HIGH
 Temperature:25.3DEG
 Operators:
 Test Date:23 September 2021
 V(B) Range:-75 - 75DEG
 V(B) Interval: 5.0DEG
 Test System:EVERFINE GO-2000B_V1 SYSTEM V2.0.366
 Humidity:65.0%
 Test Distance:7.500m [K=1.0867]
 Remarks:

LUMINOUS DISTRIBUTION INTENSITY DATA

Test:U:222.07V I:0.1334A P:27.222W PF:0.9360 Freq:49.99Hz Lamp Flux:3843.22x1 lm		
NAME: GLM-SPL6262-27W-D	TYPE:LED	WEIGHT:
SPEC.:	DIM.:	SERIAL No.:1
MFR.: EVERFINE	SUR.:	Shielding Angle:

Table--3

UNIT: cd

C (DEG) □ (DEG)	190	195	200	205	210	215	220	225	230	235	240	245	250	255	260	265	270	275	280
0	1774	1774	1774	1774	1774	1774	1774	1774	1774	1774	1774	1774	1774	1774	1774	1774	1774	1774	1774
5	1773	1772	1770	1769	1767	1766	1765	1764	1763	1762	1761	1760	1759	1759	1758	1758	1758	1758	1758
10	1773	1770	1767	1764	1761	1758	1756	1753	1751	1749	1747	1745	1744	1743	1742	1742	1741	1741	1741
15	1771	1766	1761	1757	1753	1749	1745	1741	1738	1735	1733	1731	1729	1728	1726	1726	1725	1725	1725
20	1759	1752	1748	1743	1739	1734	1730	1727	1716	1702	1690	1680	1671	1665	1661	1657	1656	1656	1658
25	1721	1718	1717	1713	1708	1705	1681	1660	1644	1629	1617	1607	1600	1595	1592	1589	1588	1587	1589
30	1616	1631	1636	1632	1616	1588	1567	1546	1536	1532	1531	1530	1527	1525	1523	1520	1518	1516	1515
35	1386	1427	1417	1416	1405	1367	1341	1362	1397	1423	1395	1363	1336	1319	1308	1302	1300	1303	1309
40	1136	1145	1138	1138	1096	1065	1083	1119	1134	1134	1126	1109	1094	1087	1084	1083	1082	1083	1082
45	910	884	898	867	839	833	820	818	851	879	872	852	837	837	848	857	863	867	862
50	680	669	669	652	656	629	624	631	625	616	626	646	661	679	693	700	704	706	699
55	506	522	502	508	483	485	464	444	464	488	507	520	529	536	541	540	542	550	555
60	380	382	403	377	372	345	349	354	358	365	379	394	403	403	395	383	383	396	412
65	294	295	283	276	266	271	265	263	264	272	282	297	310	313	312	307	308	315	325
70	218	211	212	203	192	193	194	191	189	197	209	223	233	234	234	233	235	239	244
75	164	155	153	147	134	128	129	129	128	133	141	150	157	154	154	158	160	161	162
80	97.1	94.0	91.3	87.8	81.6	75.0	70.0	59.1	49.1	41.0	33.6	26.0	17.9	10.1	4.53	1.17	0.00	1.20	4.79
85	29.1	22.8	22.4	14.2	0.00	0.00	0.00	0.00	0.00	0.00	0.00	0.00	0.00	0.00	0.00	0.00	0.00	0.00	0.00
90	0.00	0.00	0.00	0.00	0.00	0.00	0.00	0.00	0.00	0.00	0.00	0.00	0.00	0.00	0.00	0.00	0.00	0.00	0.00

H(□) Range:-90 - 90DEG
H(□) Interval: 1.0DEG
Test Speed: HIGH
Temperature:25.3DEG
Operators:
Test Date:23 September 2021

V(B) Range:-75 - 75DEG
V(B) Interval: 5.0DEG
Test System:EVERFINE GO-2000B_V1 SYSTEM V2.0.366
Humidity:65.0%
Test Distance:7.500m [K=1.0867]
Remarks:

LUMINOUS DISTRIBUTION INTENSITY DATA

Test:U:222.07V I:0.1334A P:27.222W PF:0.9360 Freq:49.99Hz Lamp Flux:3843.22x1 lm		
NAME: GLM-SPL6262-27W-D	TYPE:LED	WEIGHT:
SPEC.:	DIM.:	SERIAL No.:1
MFR.: EVERFINE	SUR.:	Shielding Angle:

Table--4

UNIT: cd

C (DEG) □ (DEG)	285	290	295	300	305	310	315	320	325	330	335	340	345	350	355				
0	1774	1774	1774	1774	1774	1774	1774	1774	1774	1774	1774	1774	1774	1774	1774				
5	1758	1759	1759	1760	1760	1761	1762	1763	1764	1766	1767	1768	1770	1771	1772				
10	1742	1743	1744	1745	1747	1748	1750	1753	1755	1757	1760	1763	1766	1769	1772				
15	1726	1727	1729	1731	1733	1735	1738	1740	1743	1747	1751	1755	1759	1763	1768				
20	1662	1667	1675	1685	1697	1712	1722	1723	1725	1727	1731	1736	1743	1748	1754				
25	1591	1596	1601	1607	1616	1626	1643	1666	1696	1693	1689	1689	1698	1709	1714				
30	1515	1514	1515	1516	1521	1523	1524	1526	1548	1592	1608	1584	1579	1600	1605				
35	1318	1330	1347	1366	1375	1356	1342	1333	1319	1332	1387	1384	1325	1350	1363				
40	1080	1084	1100	1119	1130	1102	1045	1030	1056	1054	1062	1121	1099	1086	1115				
45	849	841	846	849	844	833	820	795	791	836	856	864	899	858	911				
50	681	665	650	630	616	607	598	615	641	659	687	680	690	685	711				
55	551	540	520	495	471	458	450	463	494	533	543	560	548	566	536				
60	420	413	400	384	367	353	349	359	382	403	429	436	440	429	394				
65	330	319	301	278	258	262	273	284	290	296	297	316	310	298	293				
70	244	236	223	209	198	198	201	199	201	205	209	221	234	237	239				
75	162	157	150	141	135	134	134	136	135	138	155	162	171	174	181				
80	10.6	18.0	26.3	35.1	44.9	55.4	64.5	75.7	81.5	87.3	96.5	100	106	112	116				
85	0.00	0.00	0.00	0.00	0.00	0.00	0.00	0.00	0.00	0.00	17.1	31.8	28.5	37.8	45.5				
90	0.00	0.00	0.00	0.00	0.00	0.00	0.00	0.00	0.00	0.00	0.00	0.00	0.00	0.00	0.00				

H(□) Range:-90 - 90DEG
 H(□) Interval: 1.0DEG
 Test Speed: HIGH
 Temperature:25.3DEG
 Operators:
 Test Date:23 September 2021
 V(B) Range:-75 - 75DEG
 V(B) Interval: 5.0DEG
 Test System:EVERFINE GO-2000B_V1 SYSTEM V2.0.366
 Humidity:65.0%
 Test Distance:7.500m [K=1.0867]
 Remarks: