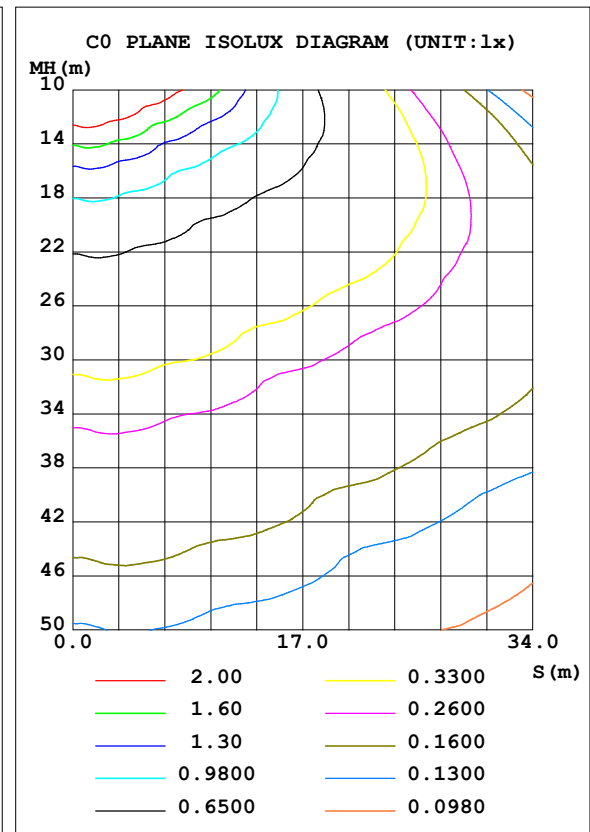
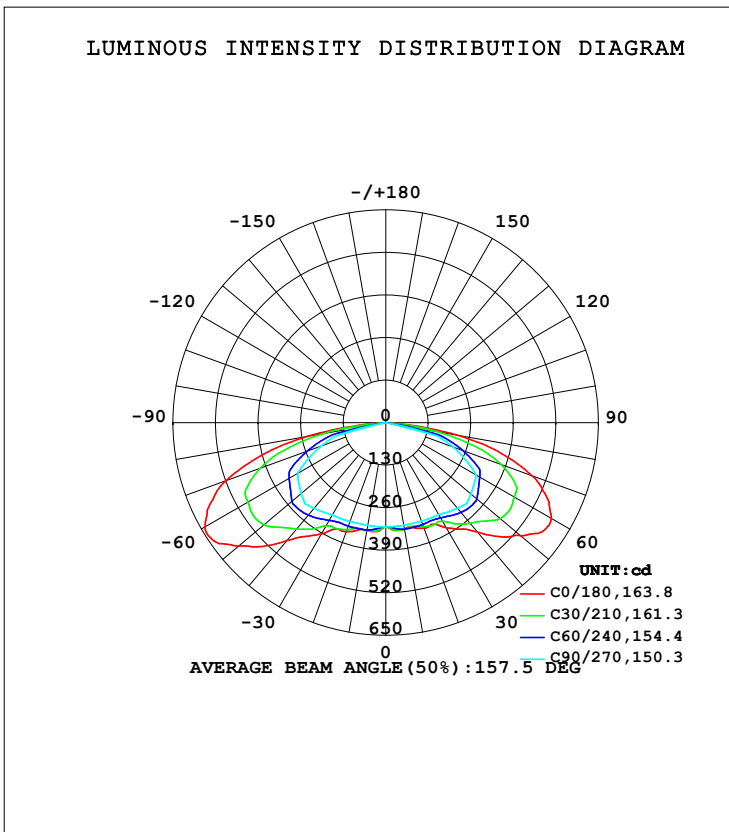


LUMINAIRE PHOTOMETRIC TEST REPORT

Test:U:218.73V I:0.1486A P:37.928W PF:0.9515 Freq:50.00Hz Lamp Flux:1906.52x1 lm		
NAME: GLM-SPL12020B-40W UP	TYPE:LED	WEIGHT:
SPEC.:	DIM.:	SERIAL No.:1
MFR.: EVERFINE	SUR.:	Shielding Angle:

DATA OF LAMP		PHOTOMETRIC DATA Eff: 50.27 lm/W			
MODEL		I _{max} (cd)	643.4	S/MH (C0/180)	2.34
NOMINAL POWER (W)		LOR (%)	100.0	S/MH (C90/270)	1.63
RATED VOLTAGE (V)	220.0	TOTAL FLUX (lm)	1906.5	<input type="checkbox"/> UP, DN (C0-180)	0.0, 49.9
NOMINAL FLUX (lm)	1906.52	CIE CLASS	DIRECT	<input type="checkbox"/> UP, DN (C180-360)	0.0, 50.1
LAMPS INSIDE	1	<input type="checkbox"/> up (%)	0.0	CIBSE SHR NOM	2.00
TEST VOLTAGE (V)	220	<input type="checkbox"/> down (%)	100.0	CIBSE SHR MAX	2.00



H(□) Range:-90 - 90DEG
 H(□) Interval: 1.0DEG
 Test Speed: HIGH
 Temperature:25.3DEG
 Operators:DAMIN
 Test Date:2020-07-08

V(B) Range:-75 - 75DEG
 V(B) Interval: 5.0DEG
 Test System:EVERFINE GO-2000A_V1 SYSTEM V2.0.290
 Humidity:65.0%
 Test Distance:7.500m [K=1.1133]
 Remarks:

ZONAL FLUX DIAGRAM

ZONAL FLUX DIAGRAM:

mm	C0	C45	C90	C135	C180	C225	C270	C315	mm	□ zone	□ total	%lum, lamp
10	330.3	331.2	318.5	335.1	335.6	334.8	319.0	331.3	0- 10	31.32	31.32	1.64,1.64
20	342.9	329.3	320.4	338.8	354.7	336.2	321.5	331.8	10- 20	94.39	125.7	6.59,6.59
30	371.8	349.3	324.5	362.3	392.6	361.7	326.1	349.7	20- 30	159.5	285.3	15,15
40	436.5	369.5	341.5	398.6	470.7	388.1	341.9	378.3	30- 40	234.2	519.4	27.2,27.2
50	537.1	398.0	339.8	426.4	586.4	416.5	337.1	400.6	40- 50	322.3	841.7	44.1,44.1
60	584.2	376.9	319.4	416.9	637.7	395.3	311.8	384.3	50- 60	391.3	1233	64.7,64.7
70	475.9	295.6	218.7	329.8	519.5	311.3	209.8	296.4	60- 70	385.3	1618	84.9,84.9
80	218.4	127.5	0	157.4	241.4	133.9	0	135.2	70- 80	257.0	1875	98.4,98.4
90	0	0	0	0	0	0	0	0	80- 90	31.16	1907	100,100
100									90-100			
110									100-110			
120									110-120			
130									120-130			
140									130-140			
150									140-150			
160									150-160			
170									160-170			
180									170-180			
DEG	LUMINOUS INTENSITY:cd									UNIT:lm		

Conical surface Flux(90deg): 669.4 lm

%lum = 35.1%

%lamp = 35.1%

Conical surface Flux(120deg): 1233.1 lm

%lum = 64.7%

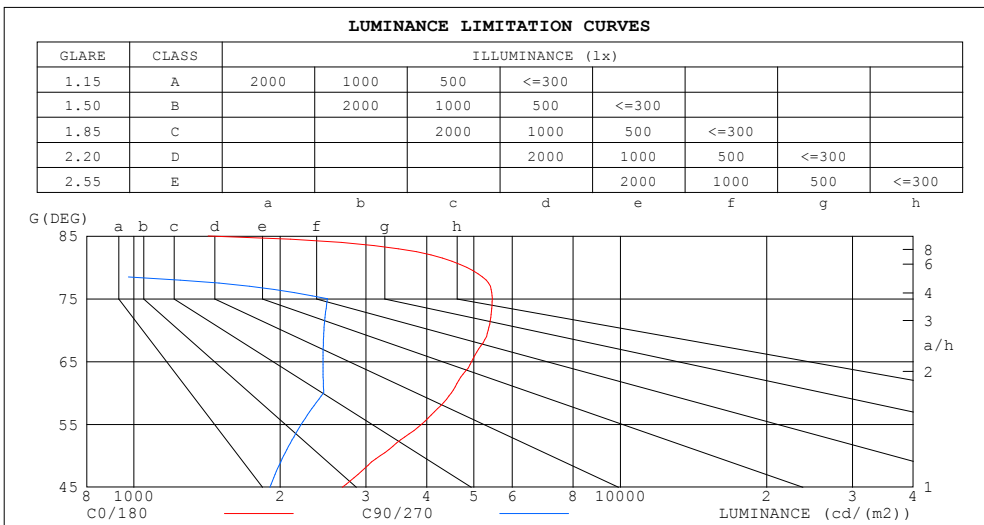
%lamp = 64.7%

H(□) Range:-90 - 90DEG
H(□) Interval: 1.0DEG
Test Speed: HIGH
Temperature:25.3DEG
Operators:DAMIN
Test Date:2020-07-08

V(B) Range:-75 - 75DEG
V(B) Interval: 5.0DEG
Test System:EVERFINE GO-2000A_V1 SYSTEM V2.0.290
Humidity:65.0%
Test Distance:7.500m [K=1.1133]
Remarks:

LUMINANCE LIMITATION CURVES

Test:U:218.73V I:0.1486A P:37.928W PF:0.9515 Freq:50.00Hz Lamp Flux:1906.52x1 lm		
NAME: GLM-SPL12020B-40W UP	TYPE:LED	WEIGHT:
SPEC.:	DIM.:	SERIAL No.:1
MFR.: EVERFINE	SUR.:	Shielding Angle:



LUMINANCE cd/(m2)		
G (DEG)	C0/180	C90/270
85	1422	0
80	4837	0
75	5457	2502
70	5351	2460
65	4948	2449
60	4494	2457
55	3905	2210
50	3214	2033
45	2683	1904

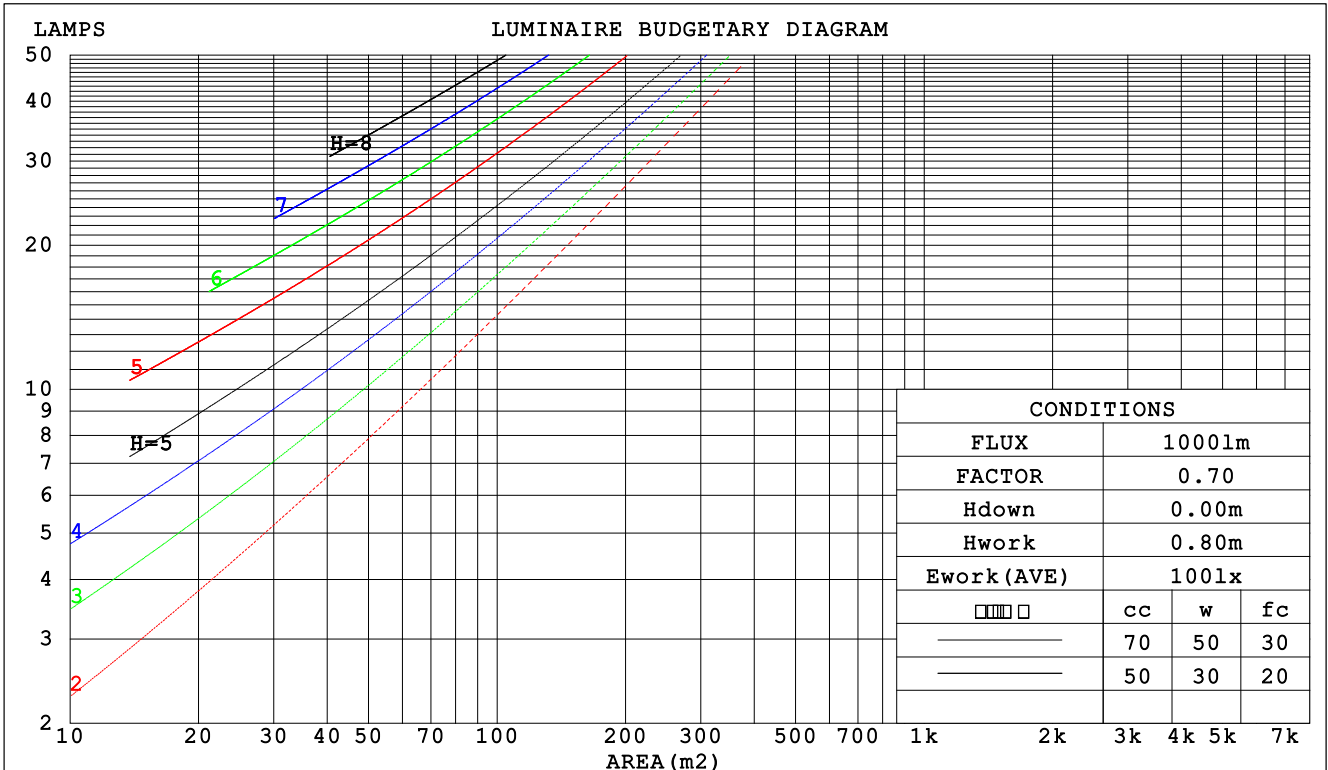
H(□) Range:-90 - 90DEG
H(□) Interval: 1.0DEG
Test Speed: HIGH
Temperature:25.3DEG
Operators:DAMIN
Test Date:2020-07-08

V(B) Range:-75 - 75DEG
V(B) Interval: 5.0DEG
Test System:EVERFINE GO-2000A_V1 SYSTEM V2.0.290
Humidity:65.0%
Test Distance:7.500m [K=1.1133]
Remarks:

CU AND LUMINAIRE BUDGETARY ESTIMATE DIAGRAM

Test:U:218.73V I:0.1486A P:37.928W PF:0.9515 Freq:50.00Hz Lamp Flux:1906.52x1 lm		
NAME: GLM-SPL12020B-40W UP	TYPE:LED	WEIGHT:
SPEC.:	DIM.:	SERIAL No.:1
MFR.: EVERFINE	SUR.:	Shielding Angle:

□cc	80%			70%			50%			30%			10%			0
□w	50%	30%	10%	50%	30%	10%	50%	30%	10%	50%	30%	10%	50%	30%	10%	0
□fc	20%			20%			20%			20%			20%			0
RCR	RCR:Room Cavity Ratio						Coefficients of Utilization(CU)									
0.0	1.19	1.19	1.19	1.16	1.16	1.16	1.11	1.11	1.11	1.06	1.06	1.06	1.02	1.02	1.02	1.00
1.0	1.01	.96	.91	.98	.94	.89	.94	.90	.87	.90	.87	.84	.86	.84	.81	.79
2.0	.85	.76	.70	.83	.75	.69	.79	.72	.67	.75	.70	.65	.72	.68	.64	.61
3.0	.72	.62	.55	.70	.61	.54	.67	.59	.53	.64	.57	.52	.61	.56	.51	.48
4.0	.62	.52	.44	.61	.51	.44	.58	.49	.43	.55	.48	.42	.53	.47	.42	.39
5.0	.54	.44	.36	.53	.43	.36	.51	.42	.35	.49	.41	.35	.47	.40	.35	.32
6.0	.48	.38	.30	.47	.37	.30	.45	.36	.30	.43	.35	.30	.41	.35	.29	.27
7.0	.43	.33	.26	.42	.32	.26	.40	.32	.26	.39	.31	.25	.37	.30	.25	.23
8.0	.38	.29	.23	.38	.29	.22	.36	.28	.22	.35	.28	.22	.34	.27	.22	.20
9.0	.35	.26	.20	.34	.26	.20	.33	.25	.20	.32	.25	.19	.31	.24	.19	.17
10.0	.32	.23	.18	.31	.23	.17	.30	.23	.17	.29	.22	.17	.28	.22	.17	.15



H(□) Range:-90 - 90DEG
H(□) Interval: 1.0DEG
Test Speed: HIGH
Temperature:25.3DEG
Operators:DAMIN
Test Date:2020-07-08

V(B) Range:-75 - 75DEG
V(B) Interval: 5.0DEG
Test System:EVERFINE GO-2000A_V1 SYSTEM V2.0.290
Humidity:65.0%
Test Distance:7.500m [K=1.1133]
Remarks:

WEC AND CCEC

Test:U:218.73V I:0.1486A P:37.928W PF:0.9515 Freq:50.00Hz Lamp Flux:1906.52x1 lm		
NAME: GLM-SPL12020B-40W UP	TYPE:LED	WEIGHT:
SPEC.:	DIM.:	SERIAL No.:1
MFR.: EVERFINE	SUR.:	Shielding Angle:

<input type="checkbox"/> cc	80%	70%	50%	30%	10%	0
<input type="checkbox"/> w	50% 30% 10%	50% 30% 10%	50% 30% 10%	50% 30% 10%	50% 30% 10%	0
<input type="checkbox"/> fc	20%	20%	20%	20%	20%	0
RCR	RCR:Room Cavity Ratio		Wall Exitance Coefficients (WEC)			
0.0						
1.0	.370 .210 .067	.363 .207 .066	.349 .200 .064	.337 .194 .062	.325 .188 .061	
2.0	.348 .191 .058	.341 .188 .058	.329 .183 .057	.318 .178 .056	.307 .174 .055	
3.0	.318 .169 .051	.312 .167 .050	.301 .163 .050	.291 .159 .049	.282 .156 .048	
4.0	.289 .150 .044	.284 .149 .044	.274 .145 .043	.265 .142 .043	.257 .139 .042	
5.0	.264 .134 .039	.259 .133 .039	.250 .130 .038	.242 .128 .038	.235 .125 .038	
6.0	.241 .121 .035	.237 .120 .034	.230 .118 .034	.222 .116 .034	.216 .113 .034	
7.0	.222 .110 .031	.219 .109 .031	.212 .107 .031	.205 .105 .031	.199 .103 .030	
8.0	.206 .100 .028	.202 .100 .028	.196 .098 .028	.190 .096 .028	.185 .095 .028	
9.0	.191 .092 .026	.188 .092 .026	.183 .090 .026	.177 .089 .025	.173 .088 .025	
10.0	.178 .086 .024	.176 .085 .024	.171 .084 .024	.166 .082 .023	.162 .081 .023	

<input type="checkbox"/> cc	80%	70%	50%	30%	10%	0
<input type="checkbox"/> w	50% 30% 10%	50% 30% 10%	50% 30% 10%	50% 30% 10%	50% 30% 10%	0
<input type="checkbox"/> fc	20%	20%	20%	20%	20%	0
RCR	RCR:Room Cavity Ratio		Ceiling Cavity Exitance Coefficients (CCEC)			
0.0	.190 .190 .190	.163 .163 .163	.111 .111 .111	.064 .064 .064	.020 .020 .020	
1.0	.184 .156 .130	.158 .134 .112	.108 .092 .077	.062 .053 .045	.020 .017 .015	
2.0	.180 .132 .091	.154 .113 .079	.105 .078 .055	.061 .046 .032	.020 .015 .011	
3.0	.174 .115 .068	.149 .099 .059	.102 .069 .041	.059 .040 .024	.019 .013 .008	
4.0	.167 .102 .052	.143 .088 .046	.098 .061 .032	.057 .036 .019	.018 .012 .006	
5.0	.159 .092 .042	.137 .080 .037	.094 .056 .026	.055 .033 .015	.018 .011 .005	
6.0	.152 .084 .035	.130 .073 .031	.090 .051 .022	.052 .030 .013	.017 .010 .004	
7.0	.144 .077 .030	.124 .067 .026	.086 .047 .019	.050 .028 .011	.016 .009 .004	
8.0	.137 .071 .026	.118 .062 .023	.082 .043 .016	.048 .026 .010	.015 .008 .003	
9.0	.130 .066 .023	.112 .058 .020	.078 .041 .014	.045 .024 .009	.015 .008 .003	
10.0	.124 .062 .021	.107 .054 .018	.074 .038 .013	.043 .022 .008	.014 .007 .003	

H(□) Range:-90 - 90DEG
H(□) Interval: 1.0DEG
Test Speed: HIGH
Temperature:25.3DEG
Operators:DAMIN
Test Date:2020-07-08

V(B) Range:-75 - 75DEG
V(B) Interval: 5.0DEG
Test System:EVERFINE GO-2000A_V1 SYSTEM V2.0.290
Humidity:65.0%
Test Distance:7.500m [K=1.1133]
Remarks:

UGR(Unified Glare Rating) Table

Test:U:218.73V I:0.1486A P:37.928W PF:0.9515 Freq:50.00Hz Lamp Flux:1906.52x1 lm										
NAME: GLM-SPL12020B-40W UP					TYPE:LED			WEIGHT:		
SPEC.:					DIM.:			SERIAL No.:1		
MFR.: EVERFINE					SUR.:			Shielding Angle:		
ceiling/cavity	0.7	0.7	0.5	0.5	0.3	0.7	0.7	0.5	0.5	0.3
walls	0.5	0.3	0.5	0.3	0.3	0.5	0.3	0.5	0.3	0.3
working plane	0.2	0.2	0.2	0.2	0.2	0.2	0.2	0.2	0.2	0.2
Room dimensions	Viewed crosswise					Viewed endwise				
x = 2H y = 2H	18.9	20.7	19.2	20.9	21.1	15.8	17.6	16.1	17.8	18.0
3H	21.8	23.4	22.1	23.7	23.9	17.9	19.6	18.2	19.8	20.1
4H	22.9	24.4	23.2	24.7	25.0	18.8	20.4	19.2	20.7	20.9
6H	23.6	25.0	23.9	25.3	25.6	19.0	20.4	19.3	20.7	21.0
8H	23.7	25.1	24.1	25.4	25.7	18.9	20.3	19.3	20.6	20.9
12H	23.7	25.1	24.1	25.4	25.7	18.8	20.2	19.2	20.5	20.8
4H 2H	19.4	20.9	19.7	21.2	21.5	17.1	18.7	17.5	19.0	19.2
3H	22.4	23.8	22.8	24.1	24.4	19.2	20.6	19.6	20.9	21.2
4H	23.7	24.9	24.0	25.2	25.6	20.2	21.5	20.6	21.8	22.1
6H	24.5	25.6	24.9	26.0	26.4	20.4	21.5	20.8	21.9	22.2
8H	24.7	25.8	25.1	26.1	26.5	20.3	21.4	20.7	21.8	22.1
12H	24.7	25.7	25.2	26.1	26.5	20.3	21.3	20.7	21.6	22.1
8H 4H	23.8	24.9	24.3	25.3	25.7	20.9	22.0	21.3	22.3	22.7
6H	24.9	25.7	25.3	26.2	26.6	21.1	22.0	21.6	22.4	22.9
8H	25.1	25.9	25.6	26.4	26.8	21.1	21.9	21.6	22.3	22.8
12H	25.2	25.9	25.7	26.3	26.8	21.1	21.7	21.6	22.2	22.7
12H 4H	23.8	24.8	24.2	25.2	25.6	21.0	22.0	21.5	22.4	22.8
6H	24.9	25.6	25.3	26.1	26.5	21.3	22.1	21.7	22.5	22.9
8H	25.2	25.8	25.6	26.3	26.8	21.2	21.9	21.7	22.4	22.8
Variations with the observer position at spacings:										
S = 1.0H	+ 0.1 / - 0.1					+ 0.1 / - 0.2				
1.5H	+ 0.1 / - 0.1					+ 0.2 / - 0.3				
2.0H	+ 0.4 / - 0.4					+ 0.5 / - 0.8				

CIE Pub.117, 1907 lm Total Lamp Luminous Flux Corrected (8log(F/F0) = 2.2)

H(□) Range:-90 - 90DEG
H(□) Interval: 1.0DEG
Test Speed: HIGH
Temperature:25.3DEG
Operators:DAMIN
Test Date:2020-07-08

V(B) Range:-75 - 75DEG
V(B) Interval: 5.0DEG
Test System:EVERFINE GO-2000A_V1 SYSTEM V2.0.290
Humidity:65.0%
Test Distance:7.500m [K=1.1133]
Remarks:

UTILIZATION FACTORS TABLE

Test:U:218.73V I:0.1486A P:37.928W PF:0.9515 Freq:50.00Hz Lamp Flux:1906.52x1 lm		
NAME: GLM-SPL12020B-40W UP	TYPE:LED	WEIGHT:
SPEC.:	DIM.:	SERIAL No.:1
MFR.: EVERFINE	SUR.:	Shielding Angle:

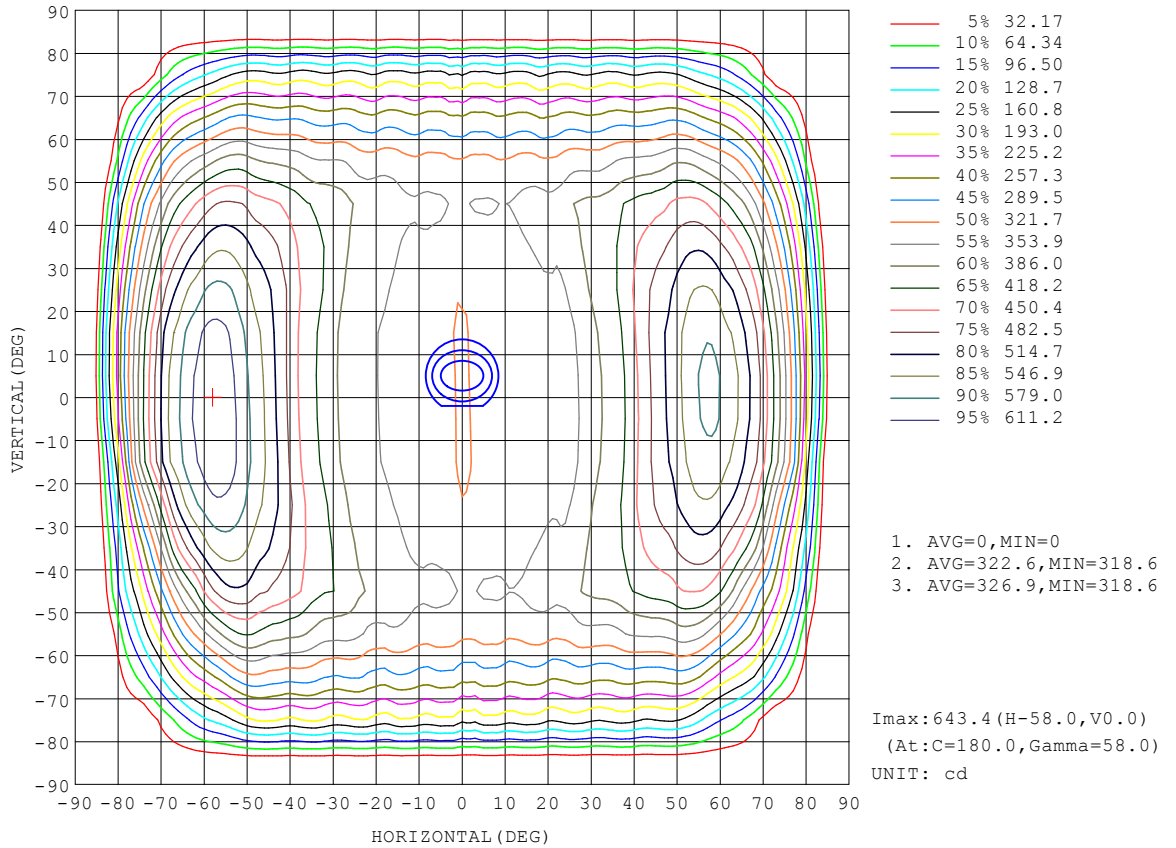
REFLECTANCE										
Ceiling	0.8	0.8	0.8	0.7	0.7	0.7	0.5	0.5	0.5	0
Walls	0.7	0.5	0.3	0.7	0.5	0.3	0.7	0.5	0.3	0
Working plane	0.2	0.2	0.2	0.2	0.2	0.2	0.2	0.2	0.2	0
ROOM INDEX	UTILIZATION FACTORS (PERCENT) $k(RI) \times RCR = 5$									
k = 0.60	48	35	26	47	34	26	46	34	26	19
0.80	58	44	35	57	44	35	55	43	35	27
1.00	67	53	44	65	53	44	63	55	44	35
1.25	74	62	53	73	61	52	70	59	52	43
1.50	80	68	59	78	67	59	75	65	58	49
2.00	89	78	70	87	77	69	83	74	68	59
2.50	94	84	77	91	83	76	87	80	74	65
3.00	98	89	83	96	88	82	91	85	79	70
4.00	103	96	90	101	94	89	96	91	86	77
5.00	106	100	96	104	98	94	99	95	91	81
ROOM INDEX	UF(total)									Direct
According to DIN EN 13032-2 2004			Suspended				SHRNOM = 1.25			

H(□) Range:-90 - 90DEG
H(□) Interval: 1.0DEG
Test Speed: HIGH
Temperature:25.3DEG
Operators:DAMIN
Test Date:2020-07-08

V(B) Range:-75 - 75DEG
V(B) Interval: 5.0DEG
Test System:EVERFINE GO-2000A_V1 SYSTEM V2.0.290
Humidity:65.0%
Test Distance:7.500m [K=1.1133]
Remarks:

ISOCANDELA DIAGRAM

Test:U:218.73V I:0.1486A P:37.928W PF:0.9515 Freq:50.00Hz Lamp Flux:1906.52x1 lm		
NAME: GLM-SPL12020B-40W UP	TYPE:LED	WEIGHT:
SPEC.:	DIM.:	SERIAL No.:1
MFR.: EVERFINE	SUR.:	Shielding Angle:

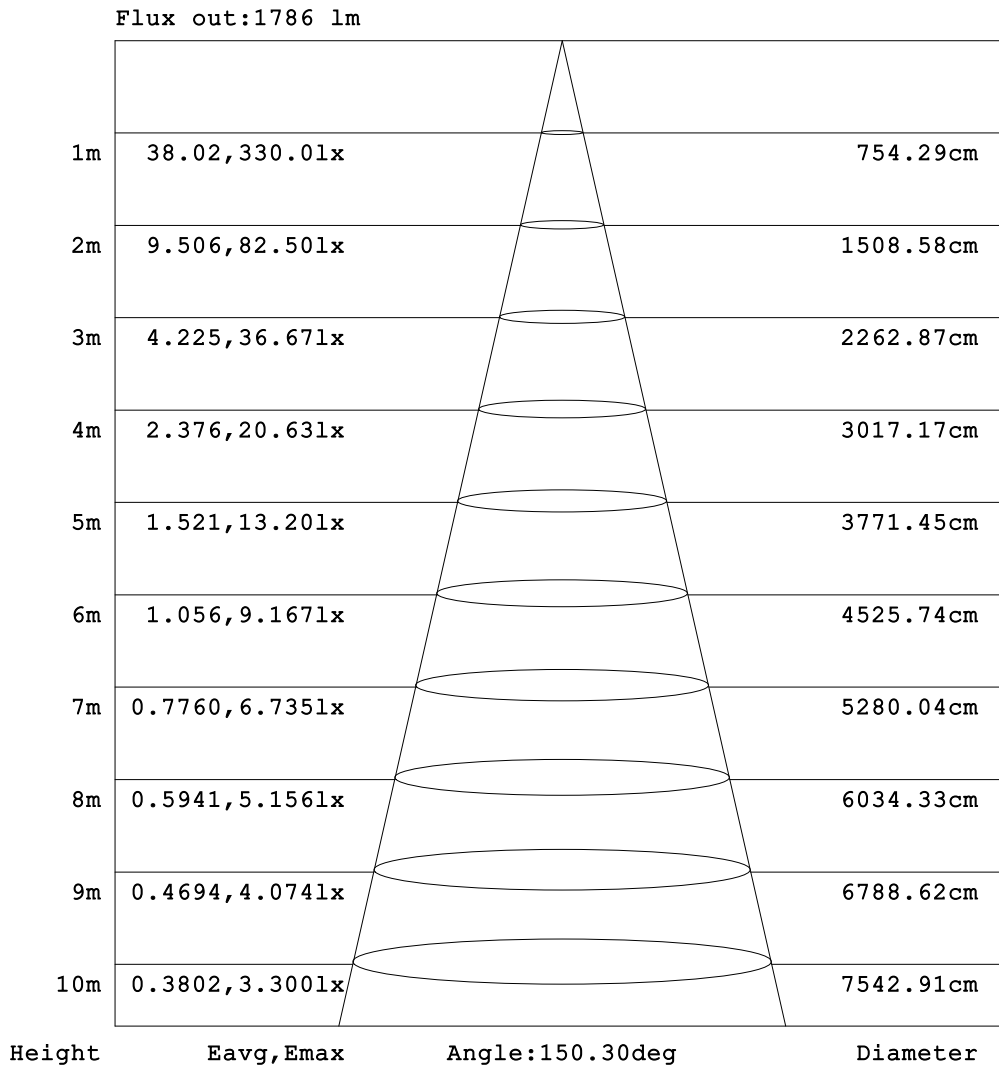


H(□) Range:-90 - 90DEG
 H(□) Interval: 1.0DEG
 Test Speed: HIGH
 Temperature:25.3DEG
 Operators:DAMIN
 Test Date:2020-07-08

V(B) Range:-75 - 75DEG
 V(B) Interval: 5.0DEG
 Test System:EVERFINE GO-2000A_V1 SYSTEM V2.0.290
 Humidity:65.0%
 Test Distance:7.500m [K=1.1133]
 Remarks:

AAI Figure

Test:U:218.73V I:0.1486A P:37.928W PF:0.9515 Freq:50.00Hz Lamp Flux:1906.52x1 lm		
NAME: GLM-SPL12020B-40W UP	TYPE:LED	WEIGHT:
SPEC.:	DIM.:	SERIAL No.:1
MFR.: EVERFINE	SUR.:	Shielding Angle:



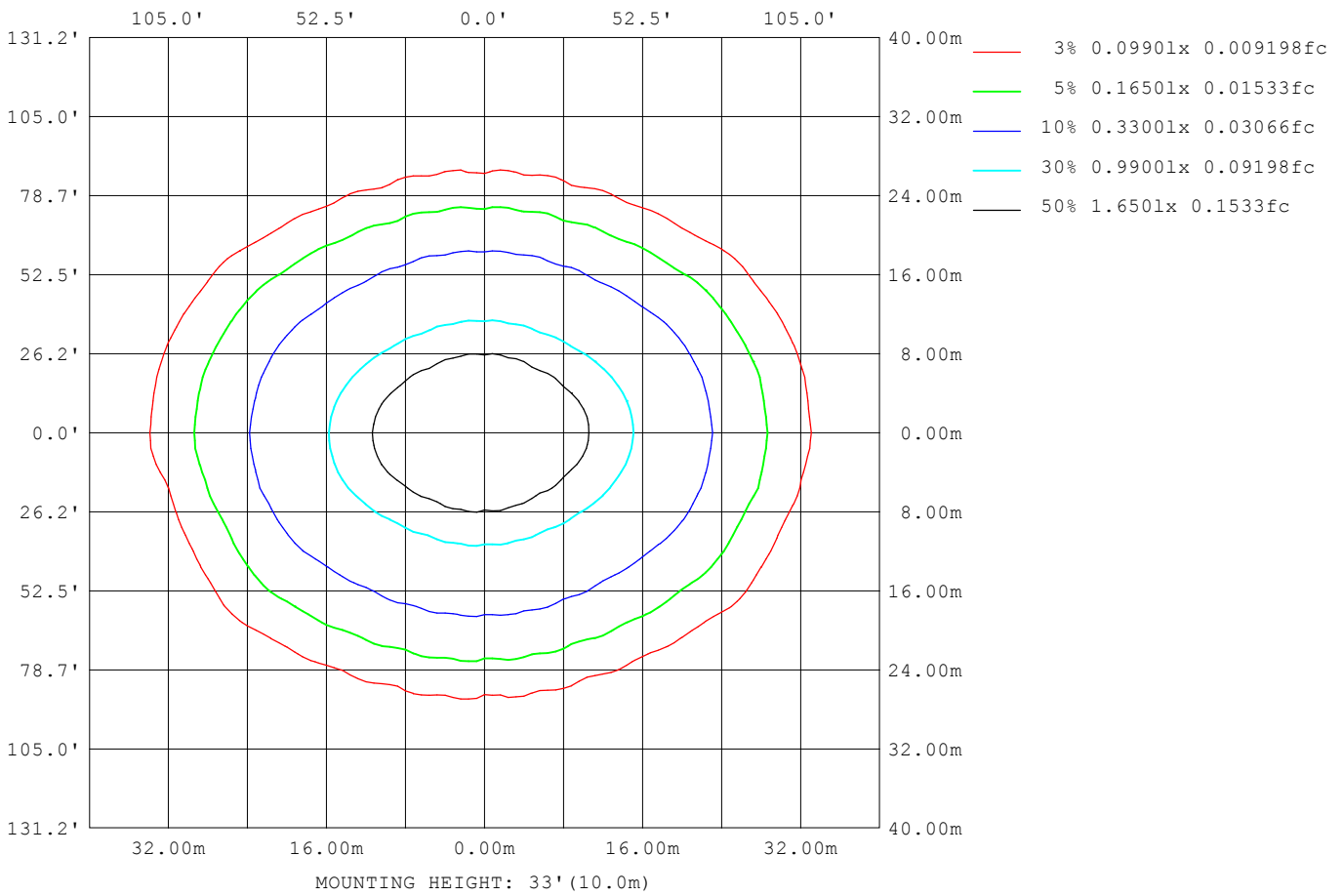
Note:The Curves indicate the illuminated area and the average illumination when the luminaire is at different distance.

H(□) Range:-90 - 90DEG
H(□) Interval: 1.0DEG
Test Speed: HIGH
Temperature:25.3DEG
Operators:DAMIN
Test Date:2020-07-08

V(B) Range:-75 - 75DEG
V(B) Interval: 5.0DEG
Test System:EVERFINE GO-2000A_V1 SYSTEM V2.0.290
Humidity:65.0%
Test Distance:7.500m [K=1.1133]
Remarks:

ISOLUX DIAGRAM

Test:U:218.73V I:0.1486A P:37.928W PF:0.9515 Freq:50.00Hz Lamp Flux:1906.52x1 lm		
NAME: GLM-SPL12020B-40W UP	TYPE:LED	WEIGHT:
SPEC.:	DIM.:	SERIAL No.:1
MFR.: EVERFINE	SUR.:	Shielding Angle:



H(□) Range:-90 - 90DEG
H(□) Interval: 1.0DEG
Test Speed: HIGH
Temperature:25.3DEG
Operators:DAMIN
Test Date:2020-07-08

V(B) Range:-75 - 75DEG
V(B) Interval: 5.0DEG
Test System:EVERFINE GO-2000A_V1 SYSTEM V2.0.290
Humidity:65.0%
Test Distance:7.500m [K=1.1133]
Remarks:

LED Avg.L Report

Test:U:218.73V I:0.1486A P:37.928W PF:0.9515 Freq:50.00Hz Lamp Flux:1906.52x1 lm		
NAME: GLM-SPL12020B-40W UP	TYPE:LED	WEIGHT:
SPEC.:	DIM.:	SERIAL No.:1
MFR.: EVERFINE	SUR.:	Shielding Angle:

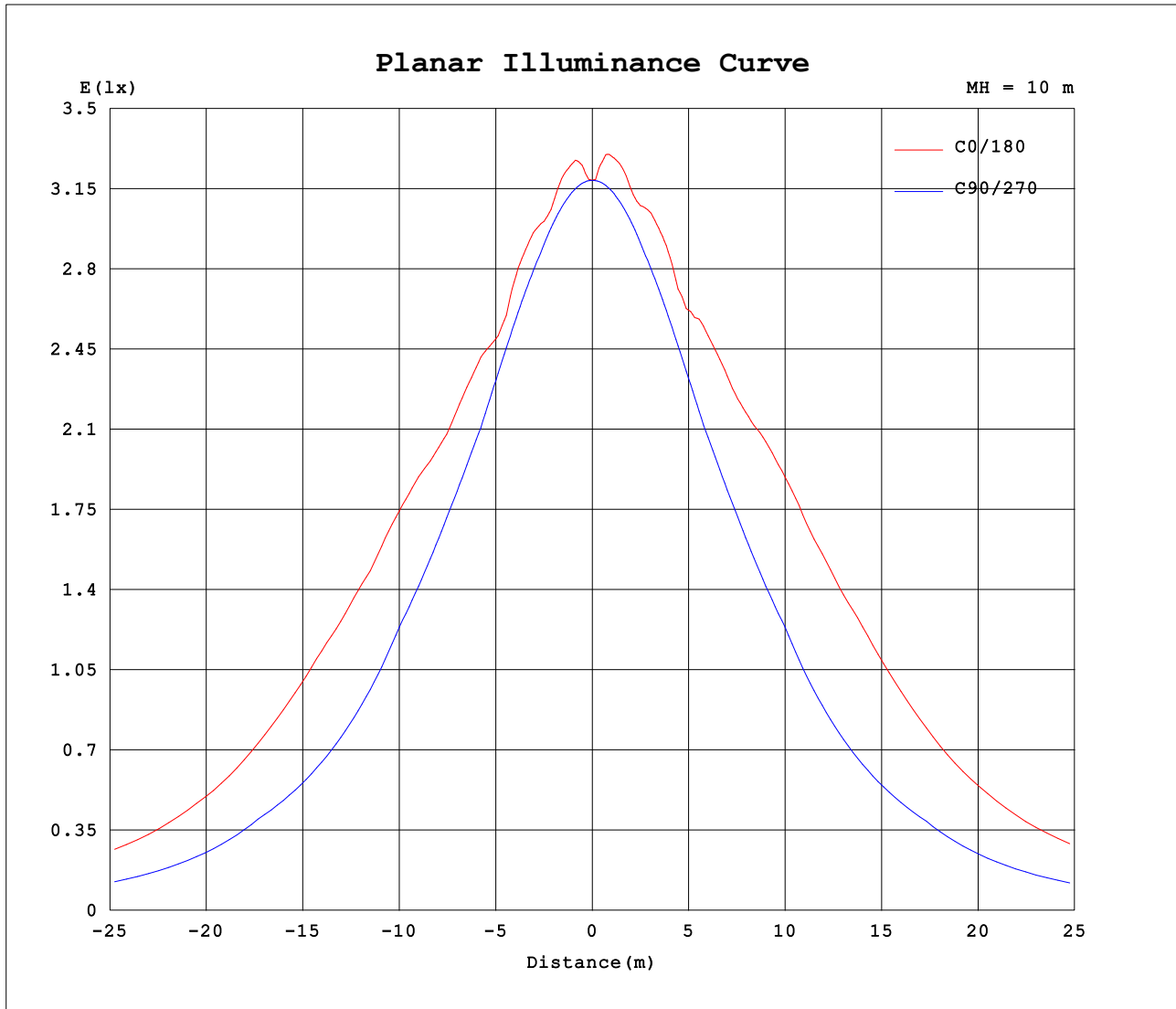
AvgL	cd/m2
L_0~180 (65) av	5176
L_0~180 (75) av	5690
L_0~180 (85) av	1564
L_90~270 (65) av	2411
L_90~270 (75) av	2431
L_90~270 (85) av	0
L_45 (65) av	3291
L_45 (75) av	3503
L_45 (85) av	0

Standard: GB/T 29293-2012

H(□) Range:-90 - 90DEG
H(□) Interval: 1.0DEG
Test Speed: HIGH
Temperature:25.3DEG
Operators:DAMIN
Test Date:2020-07-08

V(B) Range:-75 - 75DEG
V(B) Interval: 5.0DEG
Test System:EVERFINE GO-2000A_V1 SYSTEM V2.0.290
Humidity:65.0%
Test Distance:7.500m [K=1.1133]
Remarks:

Planar Illuminance Curve



H(□) Range:-90 - 90DEG
H(□) Interval: 1.0DEG
Test Speed: HIGH
Temperature:25.3DEG
Operators:DAMIN
Test Date:2020-07-08

V(B) Range:-75 - 75DEG
V(B) Interval: 5.0DEG
Test System:EVERFINE GO-2000A_V1 SYSTEM V2.0.290
Humidity:65.0%
Test Distance:7.500m [K=1.1133]
Remarks:

LUMINOUS DISTRIBUTION INTENSITY DATA

Test:U:218.73V I:0.1486A P:37.928W PF:0.9515 Freq:50.00Hz Lamp Flux:1906.52x1 lm		
NAME: GLM-SPL12020B-40W UP	TYPE:LED	WEIGHT:
SPEC.:	DIM.:	SERIAL No.:1
MFR.: EVERFINE	SUR.:	Shielding Angle:

Table--1

UNIT: cd

C (DEG) □ (DEG)	0	5	10	15	20	25	30	35	40	45	50	55	60	65	70	75	80	85	90
0	319	319	319	319	319	319	319	319	319	319	319	319	319	319	319	319	319	319	319
5	331	331	331	331	330	330	330	329	329	328	327	326	324	322	321	320	319	319	319
10	330	330	330	331	331	331	331	332	331	331	331	331	331	329	327	324	321	319	318
15	332	332	332	331	329	329	328	327	328	329	331	331	331	331	331	328	324	319	318
20	343	343	343	342	341	340	339	336	333	329	328	329	331	332	332	332	328	322	320
25	343	343	343	342	343	345	345	344	343	341	337	332	330	333	334	334	331	324	322
30	372	372	370	366	360	354	348	345	348	349	347	343	336	333	335	336	335	327	325
35	398	398	396	393	389	383	378	368	357	351	353	351	347	340	339	343	342	337	333
40	436	436	432	424	415	407	401	394	385	369	358	358	358	353	346	349	350	345	341
45	493	491	484	474	459	442	426	413	401	390	376	363	365	364	356	354	358	354	350
50	537	532	521	510	494	476	456	430	409	398	391	376	363	363	354	344	348	344	340
55	582	574	562	537	514	488	463	439	419	399	382	369	346	342	342	331	337	334	330
60	584	575	566	546	524	488	454	432	404	377	353	345	332	320	327	319	324	324	319
65	544	535	523	508	487	465	435	393	366	348	325	314	306	284	287	278	278	277	269
70	476	470	454	427	410	394	376	351	317	296	277	255	251	235	233	232	228	230	219
75	367	350	318	303	298	288	283	273	247	222	216	197	192	187	178	185	179	183	168
80	218	182	186	185	188	167	160	170	169	128	101	72.1	50.5	35.3	20.9	12.5	5.30	1.37	0.00
85	32.2	17.3	31.9	28.7	25.2	24.2	0.00	0.00	0.00	0.00	0.00	0.00	0.00	0.00	0.00	0.00	0.00	0.00	0.00
90	0.00	0.00	0.00	0.00	0.00	0.00	0.00	0.00	0.00	0.00	0.00	0.00	0.00	0.00	0.00	0.00	0.00	0.00	0.00

H(□) Range:-90 - 90DEG
H(□) Interval: 1.0DEG
Test Speed: HIGH
Temperature:25.3DEG
Operators:DAMIN
Test Date:2020-07-08

V(B) Range:-75 - 75DEG
V(B) Interval: 5.0DEG
Test System:EVERFINE GO-2000A_V1 SYSTEM V2.0.290
Humidity:65.0%
Test Distance:7.500m [K=1.1133]
Remarks:

LUMINOUS DISTRIBUTION INTENSITY DATA

Test:U:218.73V I:0.1486A P:37.928W PF:0.9515 Freq:50.00Hz Lamp Flux:1906.52x1 lm		
NAME: GLM-SPL12020B-40W UP	TYPE:LED	WEIGHT:
SPEC.:	DIM.:	SERIAL No.:1
MFR.: EVERFINE	SUR.:	Shielding Angle:

Table--2

UNIT: cd

C (DEG) \ □ (DEG)	95	100	105	110	115	120	125	130	135	140	145	150	155	160	165	170	175	180	185
0	319	319	319	319	319	319	319	319	319	319	319	319	319	319	319	319	319	319	319
5	319	319	321	323	325	327	328	329	330	332	333	333	333	333	334	334	334	334	334
10	319	324	327	330	333	334	334	335	335	336	336	336	336	336	336	336	336	336	336
15	321	327	332	334	334	335	336	335	335	334	334	335	337	338	339	340	341	341	340
20	326	332	335	336	337	336	335	336	339	343	347	350	351	353	354	354	355	355	355
25	330	336	338	339	338	339	343	349	353	355	357	358	358	358	358	359	360	360	360
30	334	339	341	340	342	350	356	360	362	362	363	367	374	382	388	391	393	393	392
35	344	347	347	347	354	361	366	366	370	381	393	402	408	414	420	423	425	425	424
40	352	355	353	359	367	372	372	380	399	411	422	430	438	448	458	467	471	471	469
45	361	363	362	372	378	377	385	404	417	430	447	464	484	502	517	528	534	535	531
50	350	351	355	368	374	383	406	417	426	445	474	503	526	545	562	576	584	586	578
55	340	337	346	354	354	373	392	407	434	461	486	515	549	576	601	623	631	635	624
60	329	324	335	335	338	359	367	385	417	447	483	515	553	588	609	627	633	638	627
65	282	279	293	289	307	326	337	364	383	408	447	492	520	539	567	579	589	594	584
70	235	231	244	238	259	265	282	309	330	363	397	412	427	432	462	484	520	519	516
75	187	184	194	188	207	204	228	238	259	287	302	302	310	313	312	317	382	399	395
80	1.40	5.52	13.1	22.7	38.6	54.9	84.8	111	157	194	185	183	186	183	174	170	173	241	244
85	0.00	0.00	0.00	0.00	0.00	0.00	0.00	0.00	0.00	0.00	0.00	0.00	29.5	38.1	30.4	37.9	24.6	38.7	44.3
90	0.00	0.00	0.00	0.00	0.00	0.00	0.00	0.00	0.00	0.00	0.00	0.00	0.00	0.00	0.00	0.00	0.00	0.00	0.00

H(□) Range:-90 - 90DEG
H(□) Interval: 1.0DEG
Test Speed: HIGH
Temperature:25.3DEG
Operators:DAMIN
Test Date:2020-07-08

V(B) Range:-75 - 75DEG
V(B) Interval: 5.0DEG
Test System:EVERFINE GO-2000A_V1 SYSTEM V2.0.290
Humidity:65.0%
Test Distance:7.500m [K=1.1133]
Remarks:

LUMINOUS DISTRIBUTION INTENSITY DATA

Test:U:218.73V I:0.1486A P:37.928W PF:0.9515 Freq:50.00Hz Lamp Flux:1906.52x1 lm		
NAME: GLM-SPL12020B-40W UP	TYPE:LED	WEIGHT:
SPEC.:	DIM.:	SERIAL No.:1
MFR.: EVERFINE	SUR.:	Shielding Angle:

Table--3

UNIT: cd

C (DEG) □ (DEG)	190	195	200	205	210	215	220	225	230	235	240	245	250	255	260	265	270	275	280
0	319	319	319	319	319	319	319	319	319	319	319	319	319	319	319	319	319	319	319
5	334	333	333	333	333	332	331	330	329	327	326	324	322	320	319	319	319	319	319
10	336	336	336	336	336	336	335	335	334	334	333	332	329	325	322	319	319	319	323
15	340	338	337	336	335	334	334	335	336	336	335	334	333	330	325	319	319	321	326
20	354	353	352	350	348	345	341	336	335	335	337	337	336	335	330	323	321	325	330
25	359	357	357	358	358	356	353	351	346	340	337	339	339	337	335	326	324	329	334
30	390	385	378	370	364	361	362	362	358	353	345	340	341	340	338	330	326	332	336
35	422	417	411	404	398	386	374	368	367	364	358	348	345	347	345	338	334	341	343
40	463	453	442	433	425	416	405	388	374	371	369	362	353	353	353	347	342	349	350
45	521	508	491	472	453	438	423	409	392	377	376	373	362	359	360	355	350	357	356
50	564	549	530	509	486	456	431	416	406	390	374	370	359	347	349	344	337	344	342
55	608	581	554	524	494	466	441	416	397	381	356	349	346	332	335	332	324	331	325
60	615	591	566	526	487	460	426	395	368	356	341	326	329	318	319	319	312	318	310
65	570	552	529	503	468	420	389	365	340	324	313	288	287	277	272	271	261	270	264
70	499	480	461	435	408	377	339	311	290	263	256	238	232	230	222	223	210	222	216
75	387	383	363	340	317	296	264	234	224	203	195	188	175	182	171	175	159	174	169
80	246	239	233	210	192	188	180	134	104	74.5	51.2	35.5	20.6	12.2	5.10	1.31	0.00	1.30	5.06
85	51.7	43.0	48.7	33.8	0.00	0.00	0.00	0.00	0.00	0.00	0.00	0.00	0.00	0.00	0.00	0.00	0.00	0.00	0.00
90	0.00	0.00	0.00	0.00	0.00	0.00	0.00	0.00	0.00	0.00	0.00	0.00	0.00	0.00	0.00	0.00	0.00	0.00	0.00

H(□) Range:-90 - 90DEG
H(□) Interval: 1.0DEG
Test Speed: HIGH
Temperature:25.3DEG
Operators:DAMIN
Test Date:2020-07-08

V(B) Range:-75 - 75DEG
V(B) Interval: 5.0DEG
Test System:EVERFINE GO-2000A_V1 SYSTEM V2.0.290
Humidity:65.0%
Test Distance:7.500m [K=1.1133]
Remarks:

LUMINOUS DISTRIBUTION INTENSITY DATA

Test:U:218.73V I:0.1486A P:37.928W PF:0.9515 Freq:50.00Hz Lamp Flux:1906.52x1 lm		
NAME: GLM-SPL12020B-40W UP	TYPE:LED	WEIGHT:
SPEC.:	DIM.:	SERIAL No.:1
MFR.: EVERFINE	SUR.:	Shielding Angle:

Table--4

UNIT: cd

C (DEG) □ (DEG)	285	290	295	300	305	310	315	320	325	330	335	340	345	350	355				
0	319	319	319	319	319	319	319	319	319	319	319	319	319	319	319				
5	320	322	324	325	326	327	328	329	330	330	330	331	331	331	331				
10	326	328	330	331	331	331	331	331	332	331	331	331	330	330	330				
15	330	331	331	331	331	330	328	328	328	328	329	330	331	332	332				
20	332	333	332	330	328	329	332	335	338	340	341	342	342	343	343				
25	334	334	331	332	336	340	343	344	345	345	344	343	342	343	343				
30	337	334	335	341	346	349	350	347	348	351	358	364	369	371	372				
35	341	339	345	350	354	352	355	363	374	381	386	391	395	397	398				
40	346	350	357	359	357	363	378	390	398	404	411	420	428	434	437				
45	353	361	365	362	368	383	394	405	419	433	450	466	479	488	492				
50	344	356	358	365	386	394	401	416	440	465	484	500	515	527	535				
55	332	339	336	353	369	381	405	427	447	471	500	525	547	569	576				
60	319	318	318	336	342	357	384	410	441	468	501	533	552	570	576				
65	277	271	285	302	311	333	350	371	406	446	474	493	514	526	535				
70	228	219	238	242	257	279	296	328	362	383	404	427	445	462	470				
75	178	169	186	182	203	211	228	256	278	295	321	336	350	356	360				
80	11.9	20.3	34.6	48.3	74.4	95.1	135	170	171	179	196	212	214	220	217				
85	0.00	0.00	0.00	0.00	0.00	0.00	0.00	0.00	0.00	0.00	29.7	37.7	35.3	43.2	30.6				
90	0.00	0.00	0.00	0.00	0.00	0.00	0.00	0.00	0.00	0.00	0.00	0.00	0.00	0.00	0.00				

H(□) Range:-90 - 90DEG
H(□) Interval: 1.0DEG
Test Speed: HIGH
Temperature:25.3DEG
Operators:DAMIN
Test Date:2020-07-08

V(B) Range:-75 - 75DEG
V(B) Interval: 5.0DEG
Test System:EVERFINE GO-2000A_V1 SYSTEM V2.0.290
Humidity:65.0%
Test Distance:7.500m [K=1.1133]
Remarks: