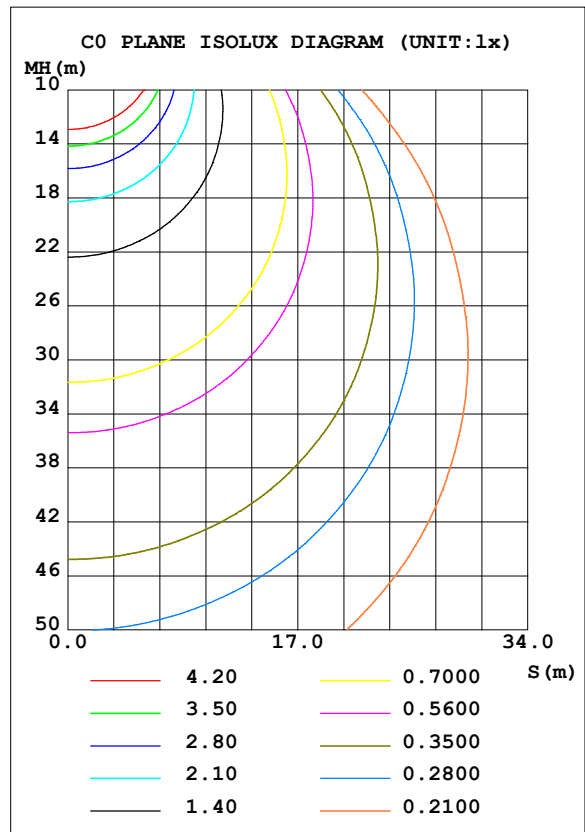
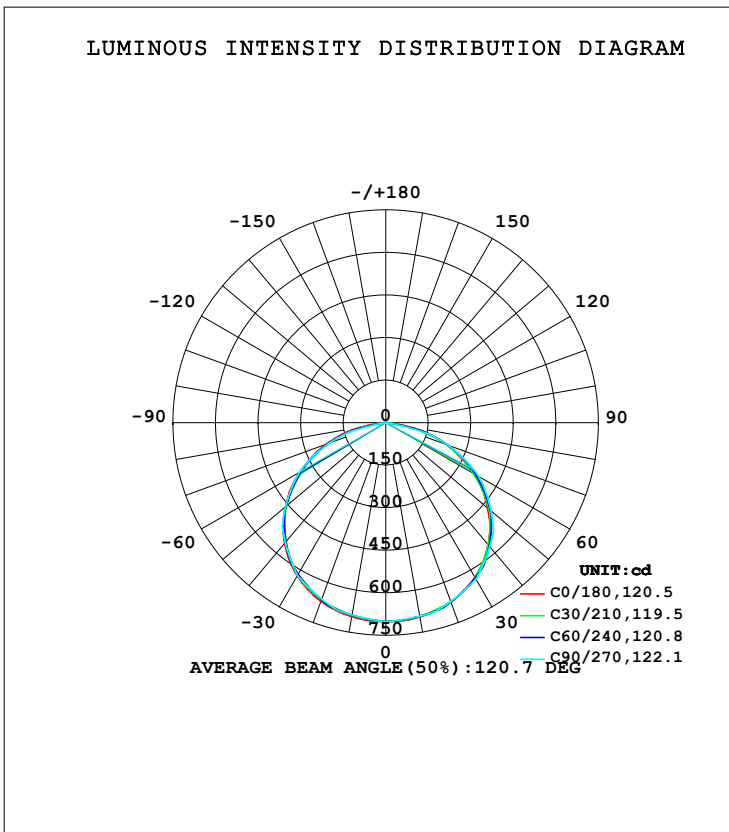


LUMINAIRE PHOTOMETRIC TEST REPORT

Test:U:219.73V I:0.1482A P:38.021W PF:0.9526 Freq:50.00Hz Lamp Flux:2149.35x1 lm		
NAME: GLM-SPL12020B-40W DOWN	TYPE:LED	WEIGHT:
SPEC.:	DIM.:	SERIAL No.:1
MFR.: EVERFINE	SUR.:	Shielding Angle:

DATA OF LAMP		PHOTOMETRIC DATA Eff: 56.53 lm/W			
MODEL		I _{max} (cd)	701.5	S/MH (C0/180)	1.32
NOMINAL POWER (W)		LOR (%)	100.0	S/MH (C90/270)	1.31
RATED VOLTAGE (V)	220.0	TOTAL FLUX (lm)	2149.4	<input type="checkbox"/> UP, DN (C0-180)	0.0, 50.7
NOMINAL FLUX (lm)	2149.35	CIE CLASS	DIRECT	<input type="checkbox"/> UP, DN (C180-360)	0.0, 49.3
LAMPS INSIDE	1	<input type="checkbox"/> up (%)	0.0	CIBSE SHR NOM	1.50
TEST VOLTAGE (V)	220	<input type="checkbox"/> down (%)	100.0	CIBSE SHR MAX	1.50



H(□) Range:-90 - 90DEG
 H(□) Interval: 1.0DEG
 Test Speed: HIGH
 Temperature:25.3DEG
 Operators:DAMIN
 Test Date:2020-07-08

V(B) Range:-75 - 75DEG
 V(B) Interval: 5.0DEG
 Test System:EVERFINE GO-2000A_V1 SYSTEM V2.0.290
 Humidity:65.0%
 Test Distance:7.500m [K=1.1133]
 Remarks:

ZONAL FLUX DIAGRAM

ZONAL FLUX DIAGRAM:

mm	C0	C45	C90	C135	C180	C225	C270	C315	mm	□ zone	□ total	%lum, lamp
10	695.5	692.4	692.6	691.9	694.4	688.6	688.2	689.4	0- 10	66.38	66.38	3.09,3.09
20	672.9	674.2	671.0	673.3	670.2	666.3	661.9	668.4	10- 20	192.9	259.3	12.1,12.1
30	629.4	629.1	636.9	627.4	624.4	616.0	622.6	619.8	20- 30	299.3	558.6	26,26
40	561.8	568.8	570.8	566.7	555.1	550.7	551.3	556.6	30- 40	372.1	930.7	43.3,43.3
50	469.3	474.1	484.8	474.1	462.1	454.0	461.5	459.6	40- 50	398.4	1329	61.8,61.8
60	357.5	360.6	378.9	362.4	351.1	340.5	353.2	345.6	50- 60	369.6	1699	79,79
70	229.4	227.9	233.6	230.9	223.6	210.5	210.2	213.5	60- 70	286.8	1985	92.4,92.4
80	79.79	78.01	0	81.59	81.16	67.61	0	68.25	70- 80	153.3	2139	99.5,99.5
90	0	0	0	0	0	0	0	0	80- 90	10.60	2149	100,100
100									90-100			
110									100-110			
120									110-120			
130									120-130			
140									130-140			
150									140-150			
160									150-160			
170									160-170			
180									170-180			
DEG	LUMINOUS INTENSITY:cd									UNIT:lm		

Conical surface Flux(90deg): 1129.8 lm

%lum = 52.6%

%lamp = 52.6%

Conical surface Flux(120deg): 1698.7 lm

%lum = 79.0%

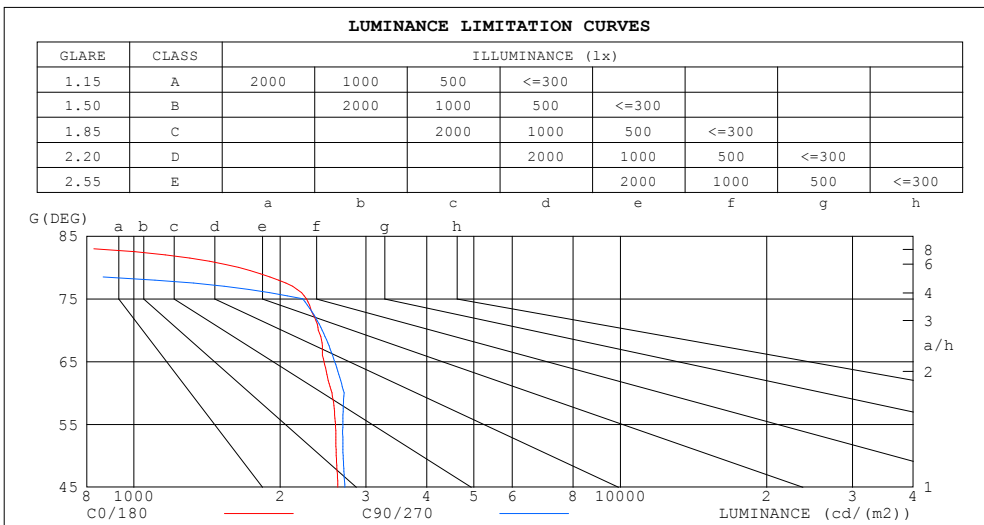
%lamp = 79.0%

H(□) Range:-90 - 90DEG
H(□) Interval: 1.0DEG
Test Speed: HIGH
Temperature:25.3DEG
Operators:DAMIN
Test Date:2020-07-08

V(B) Range:-75 - 75DEG
V(B) Interval: 5.0DEG
Test System:EVERFINE GO-2000A_V1 SYSTEM V2.0.290
Humidity:65.0%
Test Distance:7.500m [K=1.1133]
Remarks:

LUMINANCE LIMITATION CURVES

Test:U:219.73V I:0.1482A P:38.021W PF:0.9526 Freq:50.00Hz Lamp Flux:2149.35x1 lm		
NAME: GLM-SPL12020B-40W DOWN	TYPE:LED	WEIGHT:
SPEC.:	DIM.:	SERIAL No.:1
MFR.: EVERFINE	SUR.:	Shielding Angle:



LUMINANCE cd/(m2)		
G (DEG)	C0/180	C90/270
85	0	0
80	1641	0
75	2264	2222
70	2395	2440
65	2459	2588
60	2554	2706
55	2599	2689
50	2607	2694
45	2625	2716

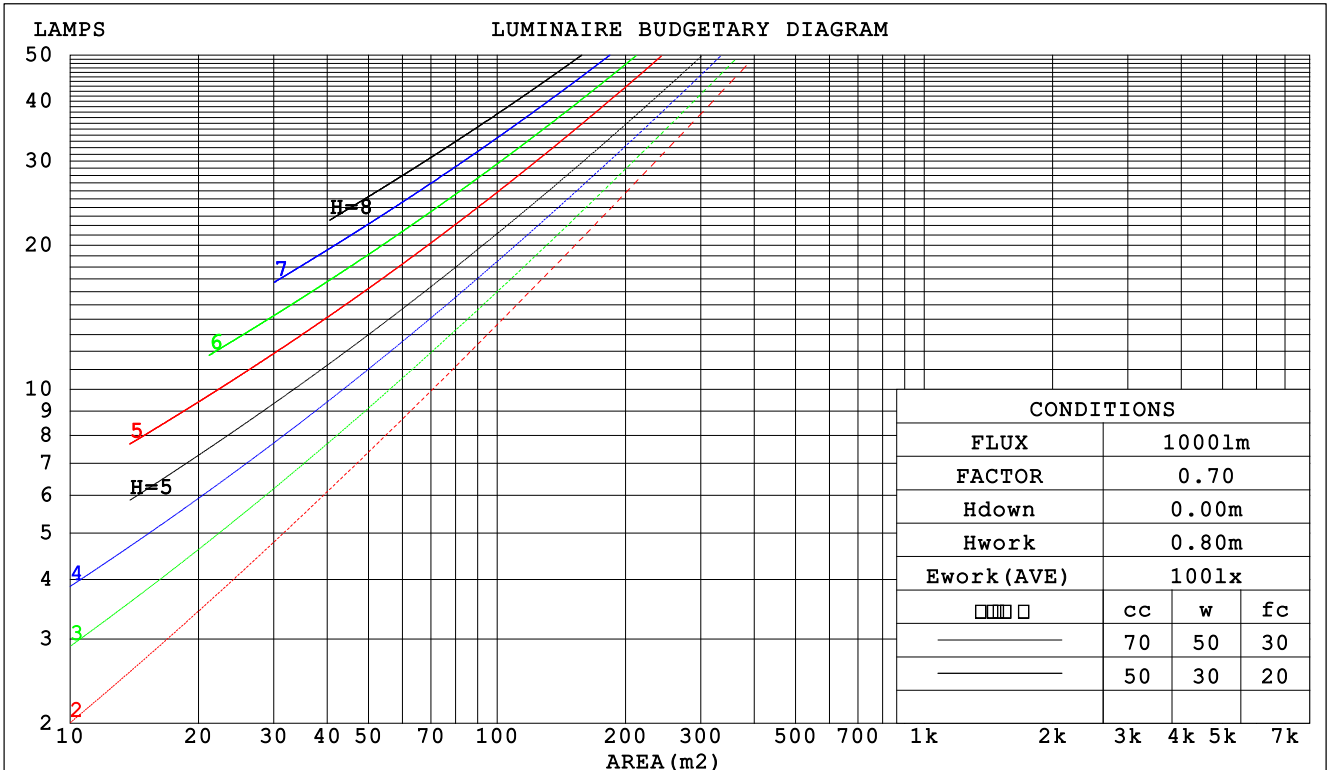
H(□) Range:-90 - 90DEG
H(□) Interval: 1.0DEG
Test Speed: HIGH
Temperature:25.3DEG
Operators:DAMIN
Test Date:2020-07-08

V(B) Range:-75 - 75DEG
V(B) Interval: 5.0DEG
Test System:EVERFINE GO-2000A_V1 SYSTEM V2.0.290
Humidity:65.0%
Test Distance:7.500m [K=1.1133]
Remarks:

CU AND LUMINAIRE BUDGETARY ESTIMATE DIAGRAM

Test:U:219.73V I:0.1482A P:38.021W PF:0.9526 Freq:50.00Hz Lamp Flux:2149.35x1 lm		
NAME: GLM-SPL12020B-40W DOWN	TYPE:LED	WEIGHT:
SPEC.:	DIM.:	SERIAL No.:1
MFR.: EVERFINE	SUR.:	Shielding Angle:

□cc	80%			70%			50%			30%			10%			0
□w	50%	30%	10%	50%	30%	10%	50%	30%	10%	50%	30%	10%	50%	30%	10%	0
□fc	20%			20%			20%			20%			20%			0
RCR	RCR:Room Cavity Ratio						Coefficients of Utilization(CU)									
0.0	1.19	1.19	1.19	1.16	1.16	1.16	1.11	1.11	1.11	1.06	1.06	1.06	1.02	1.02	1.02	1.00
1.0	1.04	1.00	.96	1.02	.98	.95	.98	.95	.92	.94	.91	.89	.90	.88	.86	.84
2.0	.91	.84	.78	.89	.83	.77	.85	.80	.75	.82	.78	.74	.79	.75	.72	.70
3.0	.79	.71	.65	.78	.70	.64	.75	.68	.63	.72	.66	.62	.69	.65	.61	.58
4.0	.70	.61	.54	.69	.60	.54	.66	.59	.53	.64	.58	.52	.62	.56	.52	.50
5.0	.62	.53	.47	.61	.53	.46	.59	.52	.46	.57	.50	.45	.55	.49	.45	.43
6.0	.56	.47	.40	.55	.46	.40	.53	.46	.40	.51	.45	.39	.50	.44	.39	.37
7.0	.51	.42	.36	.50	.41	.35	.48	.41	.35	.47	.40	.35	.45	.39	.35	.33
8.0	.46	.37	.32	.45	.37	.31	.44	.37	.31	.43	.36	.31	.42	.35	.31	.29
9.0	.42	.34	.28	.42	.34	.28	.40	.33	.28	.39	.33	.28	.38	.32	.28	.26
10.0	.39	.31	.26	.38	.31	.26	.37	.30	.25	.36	.30	.25	.36	.29	.25	.23



H(□) Range:-90 - 90DEG
H(□) Interval: 1.0DEG
Test Speed: HIGH
Temperature:25.3DEG
Operators:DAMIN
Test Date:2020-07-08

V(B) Range:-75 - 75DEG
V(B) Interval: 5.0DEG
Test System:EVERFINE GO-2000A_V1 SYSTEM V2.0.290
Humidity:65.0%
Test Distance:7.500m [K=1.1133]
Remarks:

WEC AND CCEC

Test:U:219.73V I:0.1482A P:38.021W PF:0.9526 Freq:50.00Hz Lamp Flux:2149.35x1 lm		
NAME: GLM-SPL12020B-40W DOWN	TYPE:LED	WEIGHT:
SPEC.:	DIM.:	SERIAL No.:1
MFR.: EVERFINE	SUR.:	Shielding Angle:

<input type="checkbox"/> cc	80%	70%	50%	30%	10%	0
<input type="checkbox"/> w	50% 30% 10%	50% 30% 10%	50% 30% 10%	50% 30% 10%	50% 30% 10%	0
<input type="checkbox"/> fc	20%	20%	20%	20%	20%	0
RCR	RCR:Room Cavity Ratio		Wall Exitance Coefficients (WEC)			
0.0						
1.0	.300 .171 .054	.293 .167 .053	.280 .161 .051	.268 .155 .050	.257 .149 .048	
2.0	.289 .159 .049	.283 .156 .048	.272 .151 .047	.261 .146 .046	.251 .142 .045	
3.0	.270 .144 .043	.265 .142 .043	.254 .138 .042	.245 .134 .041	.236 .131 .040	
4.0	.250 .130 .038	.245 .128 .038	.236 .125 .037	.228 .122 .037	.220 .119 .036	
5.0	.232 .118 .034	.228 .117 .034	.219 .114 .034	.212 .112 .033	.205 .109 .033	
6.0	.215 .108 .031	.211 .107 .031	.204 .105 .030	.197 .103 .030	.191 .100 .030	
7.0	.200 .099 .028	.197 .098 .028	.190 .096 .028	.184 .094 .027	.179 .093 .027	
8.0	.187 .091 .026	.184 .091 .026	.178 .089 .025	.173 .088 .025	.168 .086 .025	
9.0	.175 .085 .024	.173 .084 .024	.167 .083 .023	.162 .081 .023	.158 .080 .023	
10.0	.165 .079 .022	.162 .078 .022	.158 .077 .022	.153 .076 .022	.149 .075 .022	

<input type="checkbox"/> cc	80%	70%	50%	30%	10%	0
<input type="checkbox"/> w	50% 30% 10%	50% 30% 10%	50% 30% 10%	50% 30% 10%	50% 30% 10%	0
<input type="checkbox"/> fc	20%	20%	20%	20%	20%	0
RCR	RCR:Room Cavity Ratio		Ceiling Cavity Exitance Coefficients (CCEC)			
0.0	.190 .190 .190	.163 .163 .163	.111 .111 .111	.064 .064 .064	.020 .020 .020	
1.0	.180 .156 .135	.154 .134 .116	.105 .092 .080	.061 .053 .047	.019 .017 .015	
2.0	.172 .132 .098	.147 .114 .085	.101 .079 .059	.058 .046 .035	.019 .015 .011	
3.0	.165 .114 .074	.141 .099 .064	.097 .068 .045	.056 .040 .027	.018 .013 .009	
4.0	.157 .101 .058	.135 .087 .051	.093 .061 .036	.054 .036 .021	.017 .012 .007	
5.0	.150 .091 .047	.129 .078 .041	.089 .055 .029	.051 .032 .017	.017 .010 .006	
6.0	.143 .082 .039	.123 .071 .034	.085 .050 .024	.049 .029 .014	.016 .010 .005	
7.0	.136 .075 .033	.117 .065 .029	.081 .046 .020	.047 .027 .012	.015 .009 .004	
8.0	.130 .070 .029	.112 .060 .025	.077 .042 .018	.045 .025 .011	.015 .008 .003	
9.0	.123 .065 .025	.106 .056 .022	.074 .039 .016	.043 .023 .009	.014 .008 .003	
10.0	.118 .060 .022	.102 .052 .019	.070 .037 .014	.041 .022 .008	.013 .007 .003	

H(□) Range:-90 - 90DEG
H(□) Interval: 1.0DEG
Test Speed: HIGH
Temperature:25.3DEG
Operators:DAMIN
Test Date:2020-07-08

V(B) Range:-75 - 75DEG
V(B) Interval: 5.0DEG
Test System:EVERFINE GO-2000A_V1 SYSTEM V2.0.290
Humidity:65.0%
Test Distance:7.500m [K=1.1133]
Remarks:

UGR(Unified Glare Rating) Table

Test:U:219.73V I:0.1482A P:38.021W PF:0.9526 Freq:50.00Hz Lamp Flux:2149.35x1 lm		
NAME: GLM-SPL12020B-40W DOWN	TYPE:LED	WEIGHT:
SPEC.:	DIM.:	SERIAL No.:1
MFR.: EVERFINE	SUR.:	Shielding Angle:

ceiling/cavity	0.7	0.7	0.5	0.5	0.3	0.7	0.7	0.5	0.5	0.3
walls	0.5	0.3	0.5	0.3	0.3	0.5	0.3	0.5	0.3	0.3
working plane	0.2	0.2	0.2	0.2	0.2	0.2	0.2	0.2	0.2	0.2
Room dimensions	Viewed crosswise					Viewed endwise				
x = 2H y = 2H	16.4	17.9	16.7	18.1	18.3	16.6	18.2	16.9	18.4	18.6
3H	17.9	19.4	18.2	19.6	19.8	18.3	19.7	18.6	19.9	20.2
4H	18.5	19.9	18.8	20.1	20.4	18.9	20.2	19.2	20.5	20.7
6H	18.8	20.1	19.1	20.4	20.6	19.0	20.2	19.3	20.5	20.8
8H	18.8	20.0	19.2	20.3	20.6	18.9	20.1	19.2	20.4	20.7
12H	18.8	20.0	19.1	20.2	20.6	18.8	20.0	19.2	20.3	20.6
4H 2H	17.1	18.4	17.4	18.7	18.9	17.3	18.6	17.6	18.9	19.1
3H	18.8	20.0	19.1	20.3	20.6	19.1	20.2	19.4	20.5	20.8
4H	19.4	20.5	19.8	20.8	21.2	19.8	20.9	20.2	21.2	21.5
6H	19.8	20.8	20.2	21.1	21.5	19.9	20.9	20.3	21.2	21.6
8H	19.8	20.7	20.3	21.1	21.5	19.9	20.8	20.3	21.1	21.5
12H	19.8	20.6	20.2	21.0	21.4	19.8	20.6	20.3	21.0	21.4
8H 4H	19.7	20.6	20.1	21.0	21.4	20.1	20.9	20.5	21.3	21.7
6H	20.2	20.9	20.6	21.3	21.8	20.2	20.9	20.7	21.3	21.8
8H	20.3	20.9	20.7	21.3	21.8	20.2	20.8	20.6	21.2	21.7
12H	20.2	20.8	20.7	21.2	21.7	20.1	20.7	20.6	21.1	21.6
12H 4H	19.7	20.5	20.1	20.9	21.3	20.0	20.9	20.5	21.2	21.6
6H	20.2	20.8	20.6	21.3	21.7	20.2	20.9	20.7	21.3	21.7
8H	20.3	20.8	20.7	21.3	21.7	20.2	20.7	20.7	21.2	21.7
Variations with the observer position at spacings:										
S = 1.0H	+ 0.1 / - 0.2					+ 0.2 / - 0.3				
1.5H	+ 0.1 / - 0.2					+ 0.1 / - 0.3				
2.0H	+ 0.3 / - 0.4					+ 0.2 / - 0.5				

CIE Pub.117, 2149 lm Total Lamp Luminous Flux Corrected (8log(F/F0) = 2.7)

H(□) Range:-90 - 90DEG
H(□) Interval: 1.0DEG
Test Speed: HIGH
Temperature:25.3DEG
Operators:DAMIN
Test Date:2020-07-08

V(B) Range:-75 - 75DEG
V(B) Interval: 5.0DEG
Test System:EVERFINE GO-2000A_V1 SYSTEM V2.0.290
Humidity:65.0%
Test Distance:7.500m [K=1.1133]
Remarks:

UTILIZATION FACTORS TABLE

Test:U:219.73V I:0.1482A P:38.021W PF:0.9526 Freq:50.00Hz Lamp Flux:2149.35x1 lm		
NAME: GLM-SPL12020B-40W DOWN	TYPE:LED	WEIGHT:
SPEC.:	DIM.:	SERIAL No.:1
MFR.: EVERFINE	SUR.:	Shielding Angle:

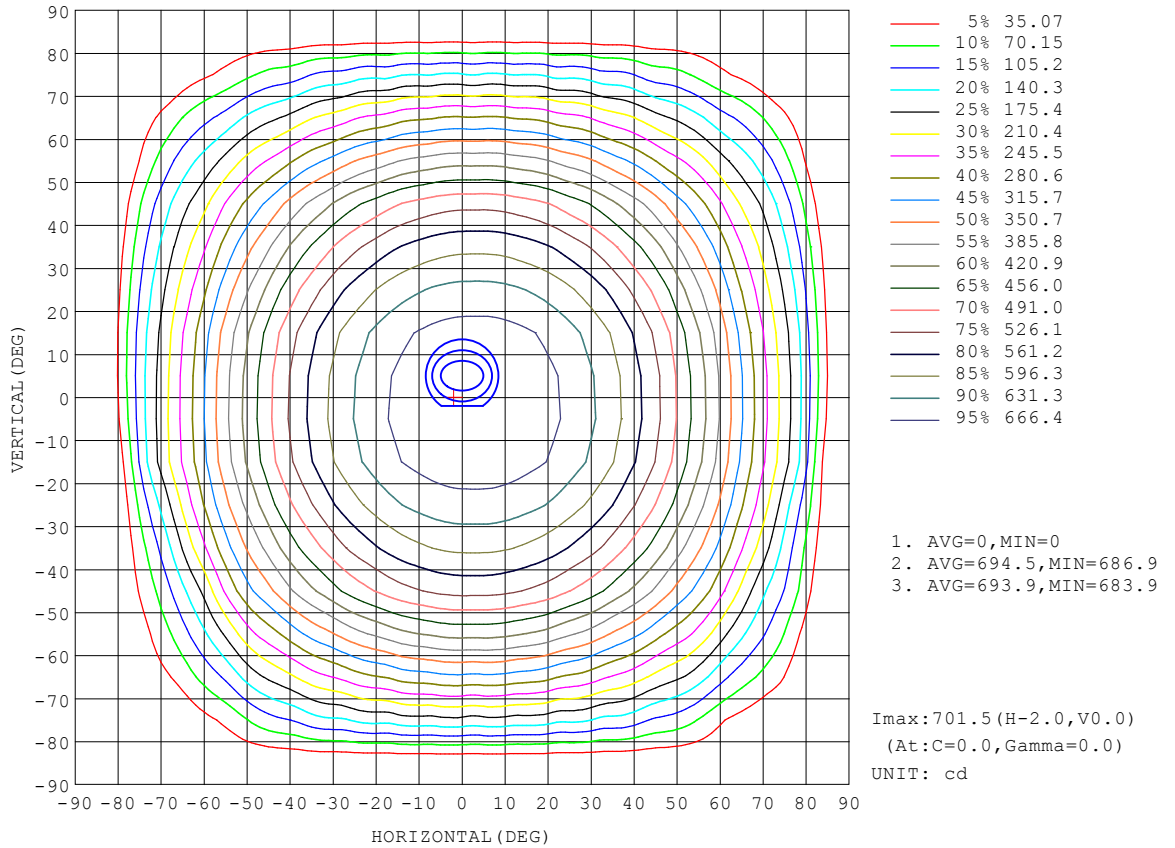
REFLECTANCE										
Ceiling	0.8	0.8	0.8	0.7	0.7	0.7	0.5	0.5	0.5	0
Walls	0.7	0.5	0.3	0.7	0.5	0.3	0.7	0.5	0.3	0
Working plane	0.2	0.2	0.2	0.2	0.2	0.2	0.2	0.2	0.2	0
ROOM INDEX	UTILIZATION FACTORS (PERCENT) $k(RI) \times RCR = 5$									
k = 0.60	57	45	38	56	45	38	55	44	38	31
0.80	67	55	48	66	55	47	64	54	47	40
1.00	76	64	57	74	64	57	72	65	56	49
1.25	83	72	65	81	71	65	79	70	64	56
1.50	88	78	71	86	77	70	83	75	69	62
2.00	95	86	80	93	85	79	90	83	78	70
2.50	99	91	85	97	90	84	93	87	83	74
3.00	102	96	90	100	94	89	96	91	87	79
4.00	107	101	96	104	99	95	100	96	92	84
5.00	109	104	100	107	102	99	102	99	96	87
ROOM INDEX	UF(total)									Direct
According to DIN EN 13032-2 2004			Suspended				SHRNOM = 1.25			

H(□) Range:-90 - 90DEG
H(□) Interval: 1.0DEG
Test Speed: HIGH
Temperature:25.3DEG
Operators:DAMIN
Test Date:2020-07-08

V(B) Range:-75 - 75DEG
V(B) Interval: 5.0DEG
Test System:EVERFINE GO-2000A_V1 SYSTEM V2.0.290
Humidity:65.0%
Test Distance:7.500m [K=1.1133]
Remarks:

ISOCANDELA DIAGRAM

Test:U:219.73V I:0.1482A P:38.021W PF:0.9526 Freq:50.00Hz Lamp Flux:2149.35x1 lm		
NAME: GLM-SPL12020B-40W DOWN	TYPE:LED	WEIGHT:
SPEC.:	DIM.:	SERIAL No.:1
MFR.: EVERFINE	SUR.:	Shielding Angle:

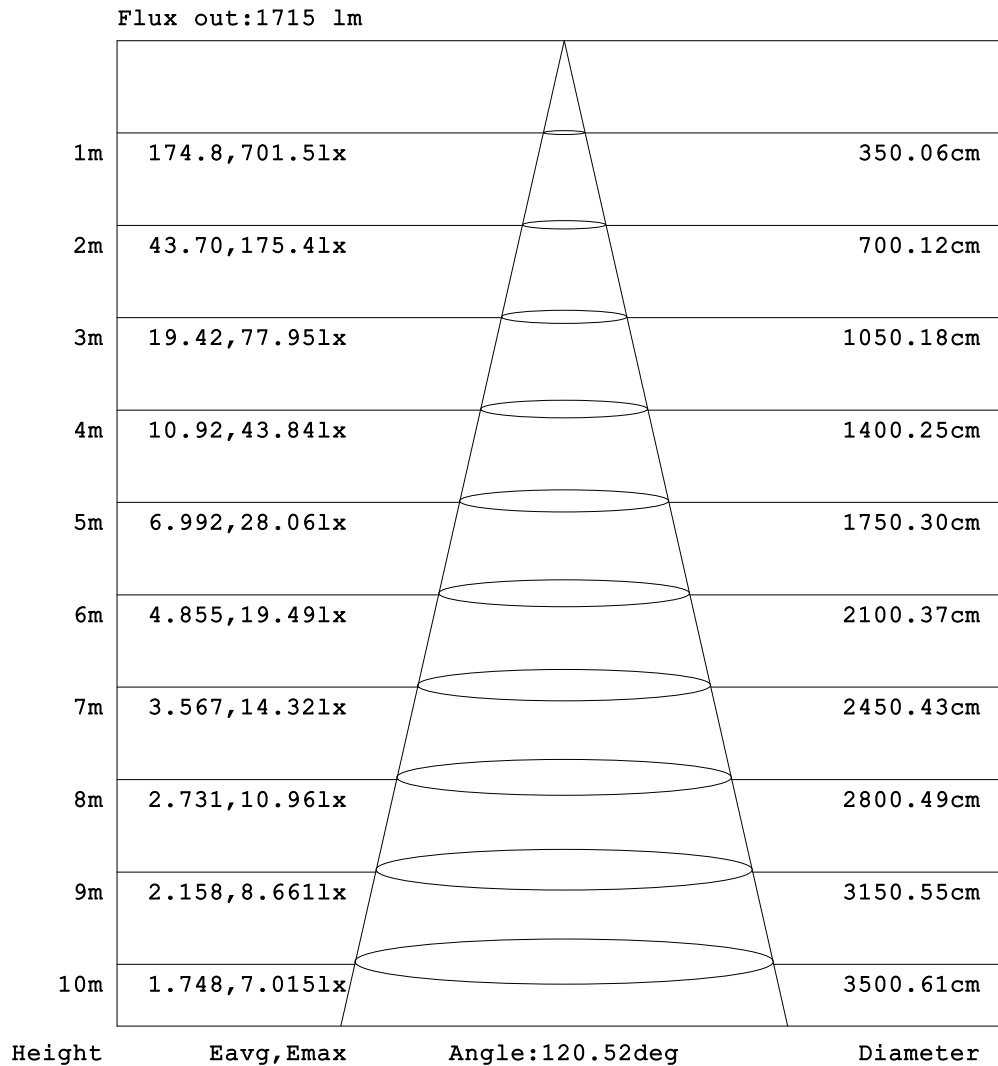


H(□) Range:-90 - 90DEG
 H(□) Interval: 1.0DEG
 Test Speed: HIGH
 Temperature:25.3DEG
 Operators:DAMIN
 Test Date:2020-07-08

V(B) Range:-75 - 75DEG
 V(B) Interval: 5.0DEG
 Test System:EVERFINE GO-2000A_V1 SYSTEM V2.0.290
 Humidity:65.0%
 Test Distance:7.500m [K=1.1133]
 Remarks:

AAI Figure

Test:U:219.73V I:0.1482A P:38.021W PF:0.9526 Freq:50.00Hz Lamp Flux:2149.35x1 lm		
NAME: GLM-SPL12020B-40W DOWN	TYPE:LED	WEIGHT:
SPEC.:	DIM.:	SERIAL No.:1
MFR.: EVERFINE	SUR.:	Shielding Angle:



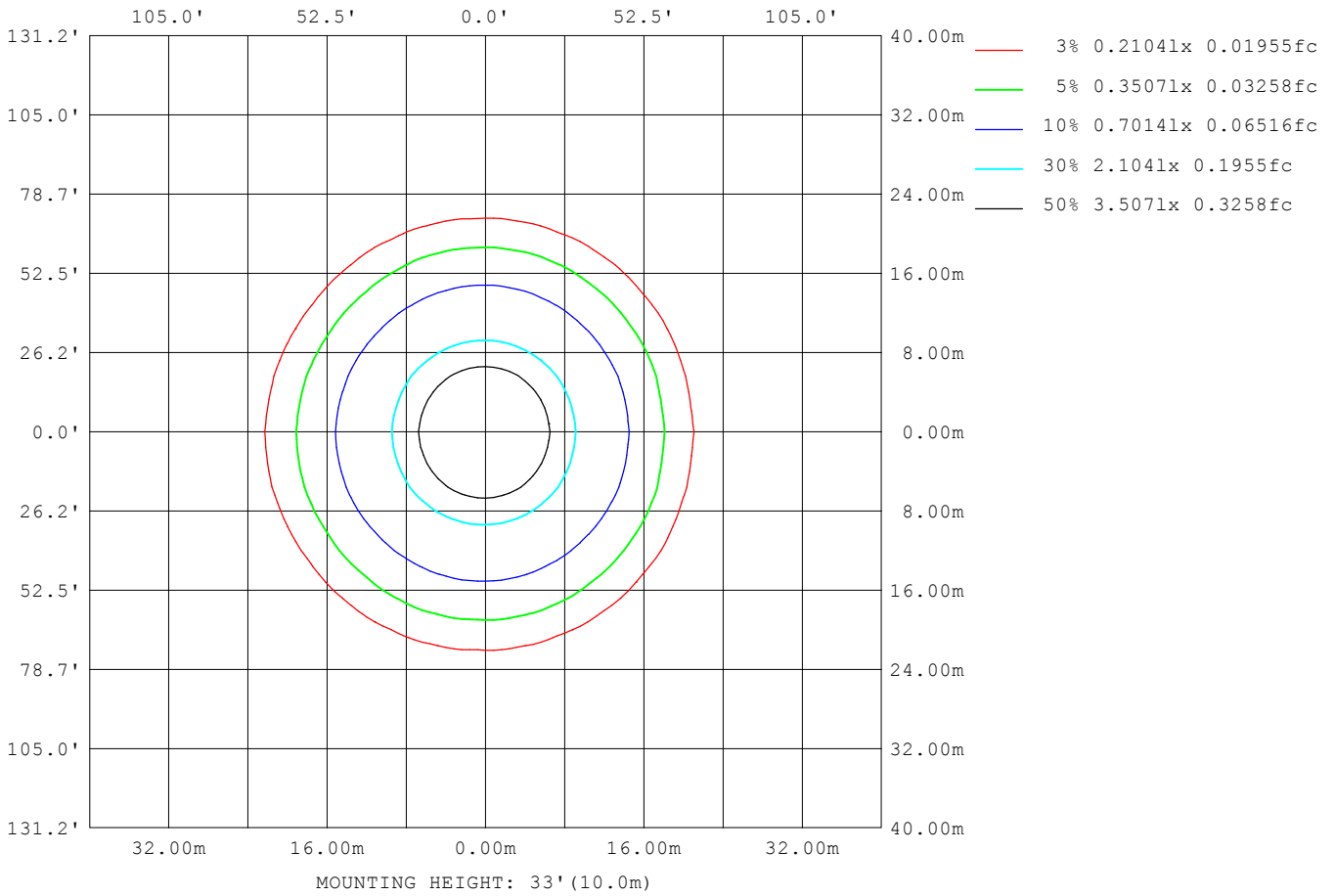
Note:The Curves indicate the illuminated area and the average illumination when the luminaire is at different distance.

H(□) Range:-90 - 90DEG
H(□) Interval: 1.0DEG
Test Speed: HIGH
Temperature:25.3DEG
Operators:DAMIN
Test Date:2020-07-08

V(B) Range:-75 - 75DEG
V(B) Interval: 5.0DEG
Test System:EVERFINE GO-2000A_V1 SYSTEM V2.0.290
Humidity:65.0%
Test Distance:7.500m [K=1.1133]
Remarks:

ISOLUX DIAGRAM

Test:U:219.73V I:0.1482A P:38.021W PF:0.9526 Freq:50.00Hz Lamp Flux:2149.35x1 lm		
NAME: GLM-SPL12020B-40W DOWN	TYPE:LED	WEIGHT:
SPEC.:	DIM.:	SERIAL No.:1
MFR.: EVERFINE	SUR.:	Shielding Angle:



H(□) Range:-90 - 90DEG
 H(□) Interval: 1.0DEG
 Test Speed: HIGH
 Temperature:25.3DEG
 Operators:DAMIN
 Test Date:2020-07-08

V(B) Range:-75 - 75DEG
 V(B) Interval: 5.0DEG
 Test System:EVERFINE GO-2000A_V1 SYSTEM V2.0.290
 Humidity:65.0%
 Test Distance:7.500m [K=1.1133]
 Remarks:

LED Avg.L Report

Test:U:219.73V I:0.1482A P:38.021W PF:0.9526 Freq:50.00Hz Lamp Flux:2149.35x1 lm		
NAME: GLM-SPL12020B-40W DOWN	TYPE:LED	WEIGHT:
SPEC.:	DIM.:	SERIAL No.:1
MFR.: EVERFINE	SUR.:	Shielding Angle:

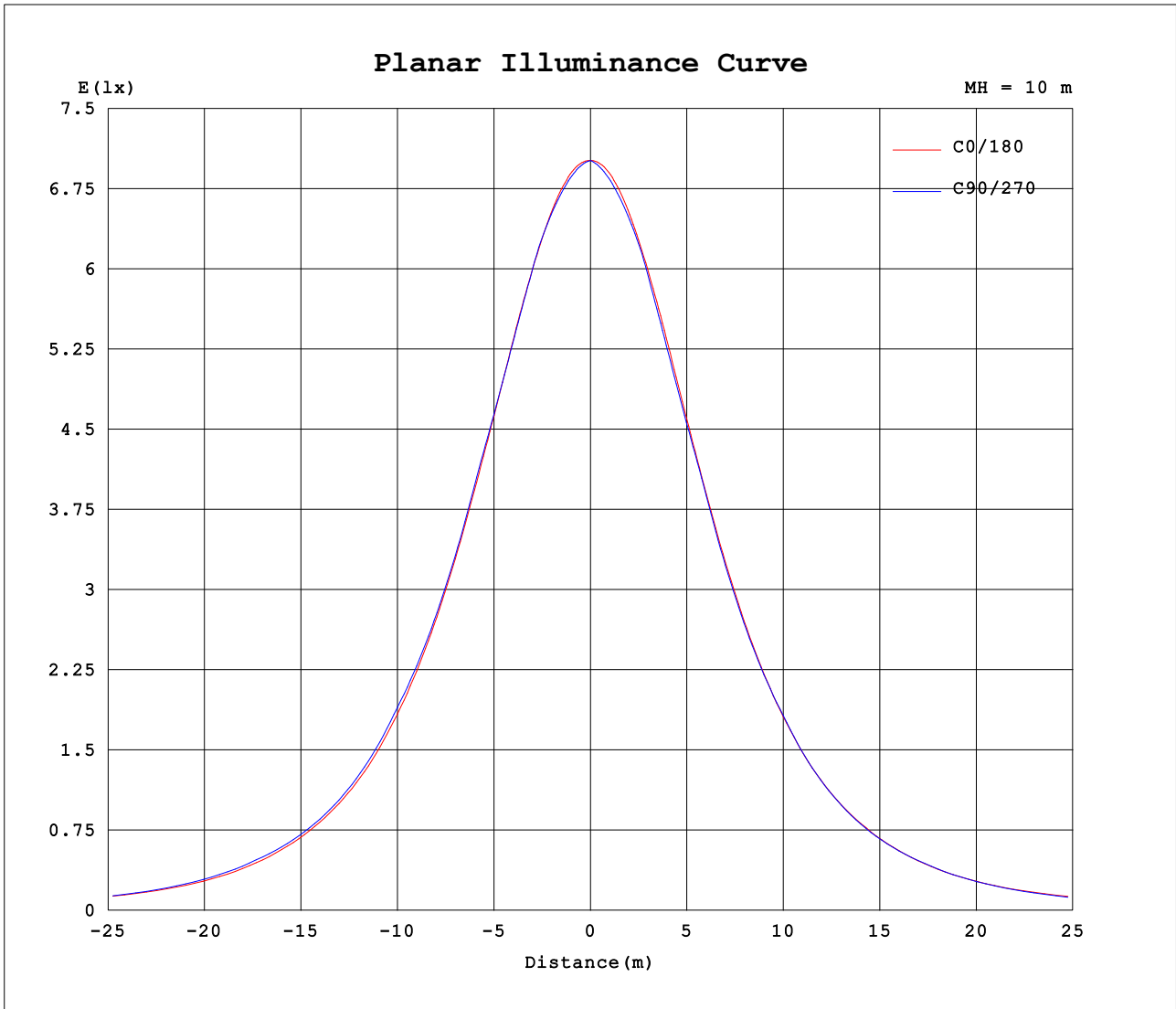
AvgL	cd/m2
L_0~180 (65) av	2439
L_0~180 (75) av	2238
L_0~180 (85) av	3
L_90~270 (65) av	2484
L_90~270 (75) av	2067
L_90~270 (85) av	0
L_45 (65) av	2441
L_45 (75) av	2067
L_45 (85) av	0

Standard: GB/T 29293-2012

H(□) Range:-90 - 90DEG
H(□) Interval: 1.0DEG
Test Speed: HIGH
Temperature:25.3DEG
Operators:DAMIN
Test Date:2020-07-08

V(B) Range:-75 - 75DEG
V(B) Interval: 5.0DEG
Test System:EVERFINE GO-2000A_V1 SYSTEM V2.0.290
Humidity:65.0%
Test Distance:7.500m [K=1.1133]
Remarks:

Planar Illuminance Curve



H(□) Range:-90 - 90DEG
H(□) Interval: 1.0DEG
Test Speed: HIGH
Temperature:25.3DEG
Operators:DAMIN
Test Date:2020-07-08

V(B) Range:-75 - 75DEG
V(B) Interval: 5.0DEG
Test System:EVERFINE GO-2000A_V1 SYSTEM V2.0.290
Humidity:65.0%
Test Distance:7.500m [K=1.1133]
Remarks:

LUMINOUS DISTRIBUTION INTENSITY DATA

Test:U:219.73V I:0.1482A P:38.021W PF:0.9526 Freq:50.00Hz Lamp Flux:2149.35x1 lm		
NAME: GLM-SPL12020B-40W DOWN	TYPE:LED	WEIGHT:
SPEC.:	DIM.:	SERIAL No.:1
MFR.: EVERFINE	SUR.:	Shielding Angle:

Table--1

UNIT: cd

C (DEG) \ □ (DEG)	0	5	10	15	20	25	30	35	40	45	50	55	60	65	70	75	80	85	90
0	702	702	702	702	702	702	702	702	702	702	702	702	702	702	702	702	702	702	702
5	701	700	700	700	699	699	699	699	698	698	698	698	698	697	697	697	697	697	697
10	696	695	694	694	693	693	693	693	692	692	692	693	693	693	693	693	693	693	693
15	686	685	684	684	683	683	683	683	684	684	685	686	687	687	688	688	688	688	688
20	673	671	670	670	670	670	671	672	673	674	674	673	673	673	672	672	672	671	671
25	653	651	650	650	651	652	654	657	655	654	653	653	653	653	654	654	654	654	654
30	629	627	626	626	627	630	630	629	628	629	630	631	632	633	635	636	637	637	637
35	599	596	595	596	599	600	598	598	599	601	604	607	606	605	604	605	605	604	604
40	562	558	558	560	562	561	561	564	567	569	567	567	568	568	569	570	571	571	571
45	520	516	516	520	518	518	520	525	523	523	524	524	527	530	533	534	537	538	538
50	469	466	467	469	469	472	475	473	472	474	478	482	482	484	484	484	486	486	485
55	417	413	416	414	415	418	417	418	421	423	423	424	424	425	429	430	432	433	432
60	358	354	357	356	360	357	356	360	360	361	360	363	367	367	374	376	378	381	379
65	291	287	287	291	290	294	295	293	293	297	299	301	305	303	307	308	307	310	306
70	229	228	222	217	215	219	225	231	228	228	232	231	234	235	233	238	235	239	234
75	164	156	140	137	139	143	149	157	159	156	162	164	162	166	160	167	163	167	161
80	79.8	63.2	68.6	70.8	73.4	68.3	68.8	78.6	87.9	78.0	66.5	55.6	40.1	29.7	18.5	11.0	4.83	1.25	0.00
85	0.00	0.03	0.70	8.28	0.01	5.17	0.00	0.00	0.00	0.00	0.00	0.00	0.00	0.00	0.00	0.00	0.00	0.00	0.00
90	0.00	0.00	0.00	0.00	0.00	0.00	0.00	0.00	0.00	0.00	0.00	0.00	0.00	0.00	0.00	0.00	0.00	0.00	0.00

H(□) Range:-90 - 90DEG
H(□) Interval: 1.0DEG
Test Speed: HIGH
Temperature:25.3DEG
Operators:DAMIN
Test Date:2020-07-08

V(B) Range:-75 - 75DEG
V(B) Interval: 5.0DEG
Test System:EVERFINE GO-2000A_V1 SYSTEM V2.0.290
Humidity:65.0%
Test Distance:7.500m [K=1.1133]
Remarks:

LUMINOUS DISTRIBUTION INTENSITY DATA

Test:U:219.73V I:0.1482A P:38.021W PF:0.9526 Freq:50.00Hz Lamp Flux:2149.35x1 lm		
NAME: GLM-SPL12020B-40W DOWN	TYPE:LED	WEIGHT:
SPEC.:	DIM.:	SERIAL No.:1
MFR.: EVERFINE	SUR.:	Shielding Angle:

Table--2

UNIT: cd

C (DEG) \ □ (DEG)	95	100	105	110	115	120	125	130	135	140	145	150	155	160	165	170	175	180	185
0	702	702	702	702	702	702	702	702	702	702	702	702	702	702	702	702	702	702	702
5	697	697	697	697	697	697	698	698	698	698	698	698	699	699	699	699	700	700	700
10	693	693	693	693	693	692	692	692	692	692	692	692	692	692	693	693	694	694	693
15	688	688	688	688	687	686	685	685	684	683	682	682	682	682	682	683	683	685	683
20	671	672	672	672	672	672	673	674	673	672	670	669	668	668	667	668	669	670	668
25	654	654	654	653	653	652	652	652	653	654	655	652	650	648	647	647	648	650	647
30	637	637	636	634	632	631	630	628	627	627	627	628	627	624	622	622	622	624	621
35	604	604	604	604	604	605	605	602	599	596	596	596	597	596	592	590	590	593	589
40	571	571	570	568	568	567	566	565	567	564	561	558	557	559	556	553	553	555	550
45	538	537	535	533	531	527	524	523	522	521	521	517	515	515	516	511	510	513	507
50	486	486	485	485	485	483	483	479	474	471	471	472	468	465	465	463	460	462	457
55	434	433	431	430	427	426	426	424	424	421	417	415	414	411	410	413	408	410	405
60	381	379	377	376	369	369	365	362	362	362	361	356	355	356	353	354	350	351	347
65	310	308	310	309	306	307	303	302	299	294	293	296	291	286	288	285	286	286	282
70	239	236	240	236	238	237	234	236	231	228	228	219	211	199	206	212	227	224	222
75	168	165	170	164	170	166	169	167	160	159	154	139	133	126	122	125	152	160	157
80	1.25	4.88	11.2	18.9	30.6	41.5	57.7	70.0	81.6	89.9	78.4	67.7	64.5	57.8	54.1	51.3	53.0	81.2	83.1
85	0.00	0.00	0.00	0.00	0.00	0.00	0.00	0.00	0.00	0.00	0.00	0.00	5.59	0.00	6.97	0.60	0.00	0.16	2.65
90	0.00	0.00	0.00	0.00	0.00	0.00	0.00	0.00	0.00	0.00	0.00	0.00	0.00	0.00	0.00	0.00	0.00	0.00	0.00

H(□) Range:-90 - 90DEG
H(□) Interval: 1.0DEG
Test Speed: HIGH
Temperature:25.3DEG
Operators:DAMIN
Test Date:2020-07-08

V(B) Range:-75 - 75DEG
V(B) Interval: 5.0DEG
Test System:EVERFINE GO-2000A_V1 SYSTEM V2.0.290
Humidity:65.0%
Test Distance:7.500m [K=1.1133]
Remarks:

LUMINOUS DISTRIBUTION INTENSITY DATA

Test:U:219.73V I:0.1482A P:38.021W PF:0.9526 Freq:50.00Hz Lamp Flux:2149.35x1 lm		
NAME: GLM-SPL12020B-40W DOWN	TYPE:LED	WEIGHT:
SPEC.:	DIM.:	SERIAL No.:1
MFR.: EVERFINE	SUR.:	Shielding Angle:

Table--3

UNIT: cd

C (DEG) □ (DEG)	190	195	200	205	210	215	220	225	230	235	240	245	250	255	260	265	270	275	280
0	702	702	702	702	702	702	702	702	702	702	702	702	702	702	702	702	702	702	702
5	699	699	698	698	697	697	697	696	696	696	695	695	695	695	695	695	695	695	695
10	692	691	691	690	690	689	689	689	689	689	689	689	688	688	688	688	688	688	688
15	681	680	679	679	678	678	678	679	679	680	680	681	681	682	681	681	682	682	682
20	666	665	664	664	664	665	665	666	666	665	664	663	663	663	662	662	662	662	663
25	645	643	643	644	646	648	645	644	642	642	641	641	642	642	642	642	642	643	643
30	619	618	618	620	620	617	616	616	616	617	618	619	620	621	622	623	623	623	623
35	587	587	589	588	586	584	584	585	587	590	589	588	587	587	587	587	587	588	589
40	549	550	551	547	546	547	549	551	548	548	548	549	549	550	551	552	551	552	552
45	506	509	505	503	503	506	504	504	504	504	506	509	511	512	515	516	516	517	516
50	457	457	454	455	457	454	452	454	457	460	460	461	461	461	462	463	462	463	463
55	406	401	400	400	399	399	401	403	402	402	402	402	405	405	407	409	407	409	409
60	347	343	344	340	339	342	341	341	339	341	344	344	349	351	352	355	353	355	354
65	280	279	279	280	280	276	275	277	279	279	282	281	283	284	283	285	282	286	283
70	218	215	213	214	214	215	211	211	214	212	214	214	212	216	212	215	210	215	212
75	155	155	150	148	146	147	145	141	146	147	145	148	141	147	141	145	139	145	141
80	86.4	82.4	82.3	77.3	72.3	74.6	78.3	67.6	58.2	48.7	35.3	26.3	16.1	9.69	4.17	1.08	0.00	1.08	4.18
85	7.61	11.8	4.51	7.90	0.00	0.00	0.00	0.00	0.00	0.00	0.00	0.00	0.00	0.00	0.00	0.00	0.00	0.00	0.00
90	0.00	0.00	0.00	0.00	0.00	0.00	0.00	0.00	0.00	0.00	0.00	0.00	0.00	0.00	0.00	0.00	0.00	0.00	0.00

H(□) Range:-90 - 90DEG
H(□) Interval: 1.0DEG
Test Speed: HIGH
Temperature:25.3DEG
Operators:DAMIN
Test Date:2020-07-08

V(B) Range:-75 - 75DEG
V(B) Interval: 5.0DEG
Test System:EVERFINE GO-2000A_V1 SYSTEM V2.0.290
Humidity:65.0%
Test Distance:7.500m [K=1.1133]
Remarks:

LUMINOUS DISTRIBUTION INTENSITY DATA

Test:U:219.73V I:0.1482A P:38.021W PF:0.9526 Freq:50.00Hz Lamp Flux:2149.35x1 lm		
NAME: GLM-SPL12020B-40W DOWN	TYPE:LED	WEIGHT:
SPEC.:	DIM.:	SERIAL No.:1
MFR.: EVERFINE	SUR.:	Shielding Angle:

Table--4

UNIT: cd

C (DEG) □ (DEG)	285	290	295	300	305	310	315	320	325	330	335	340	345	350	355				
0	702	702	702	702	702	702	702	702	702	702	702	702	702	702	702				
5	695	695	695	696	696	696	697	697	697	698	698	699	699	700	700				
10	689	689	689	689	689	689	689	690	690	690	691	692	692	693	694				
15	682	682	681	681	681	680	680	680	680	680	680	681	682	683	685				
20	663	664	665	665	666	668	668	668	667	667	666	667	667	669	671				
25	643	643	643	643	644	645	646	648	651	649	648	647	647	648	650				
30	623	622	621	621	620	620	620	620	621	624	624	623	623	624	626				
35	589	589	591	592	594	592	590	589	590	591	593	594	592	592	594				
40	552	552	552	552	552	553	557	556	554	553	553	557	556	555	557				
45	514	514	512	510	508	509	509	511	514	511	510	512	516	513	515				
50	463	464	464	464	465	462	460	459	461	465	463	462	464	464	464				
55	408	408	405	406	407	406	408	407	406	406	409	407	408	412	411				
60	353	352	347	348	345	343	346	347	348	345	347	352	350	352	351				
65	286	285	283	286	283	283	282	279	281	285	285	284	284	283	285				
70	216	212	216	215	214	217	214	215	219	217	216	218	220	222	225				
75	147	140	148	144	148	146	143	147	149	147	152	154	159	159	161				
80	9.67	16.1	26.2	34.9	48.6	57.7	68.3	78.4	74.1	72.2	77.9	82.0	81.8	81.6	80.4				
85	0.00	0.00	0.00	0.00	0.00	0.00	0.00	0.00	0.00	0.00	7.21	2.75	11.2	5.93	0.79				
90	0.00	0.00	0.00	0.00	0.00	0.00	0.00	0.00	0.00	0.00	0.00	0.00	0.00	0.00	0.00				

H(□) Range:-90 - 90DEG
H(□) Interval: 1.0DEG
Test Speed: HIGH
Temperature:25.3DEG
Operators:DAMIN
Test Date:2020-07-08

V(B) Range:-75 - 75DEG
V(B) Interval: 5.0DEG
Test System:EVERFINE GO-2000A_V1 SYSTEM V2.0.290
Humidity:65.0%
Test Distance:7.500m [K=1.1133]
Remarks: