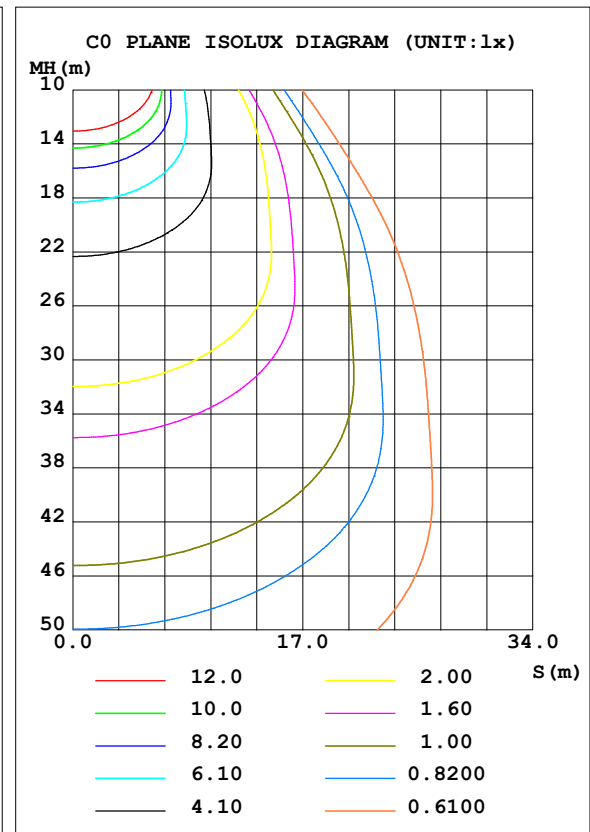
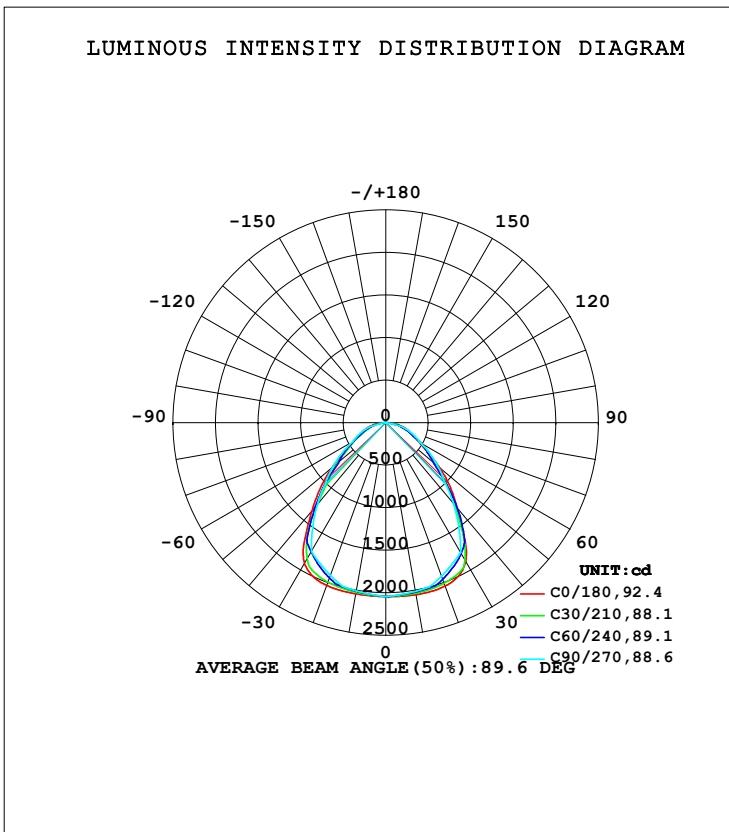


LUMINAIRE PHOTOMETRIC TEST REPORT

Test:U:219.87V I:0.1731A P:32.286W PF:0.9667 Freq:49.99Hz Lamp Flux:4475.42x1 lm		
NAME: GLM-SPL6060-32W-D	TYPE:LED	WEIGHT:
SPEC.:	DIM.:	SERIAL No.:1
MFR.: EVERFINE	SUR.:	Shielding Angle:

DATA OF LAMP		PHOTOMETRIC DATA Eff: 138.62 lm/W			
MODEL		I _{max} (cd)	2055	S/MH (C0/180)	1.27
NOMINAL POWER (W)		LOR (%)	100.0	S/MH (C90/270)	1.24
RATED VOLTAGE (V)	220.0	TOTAL FLUX (lm)	4475.4	<input type="checkbox"/> UP, DN (C0-180)	0.0, 50.1
NOMINAL FLUX (lm)	4475.42	CIE CLASS	DIRECT	<input type="checkbox"/> UP, DN (C180-360)	0.0, 49.9
LAMPS INSIDE	1	<input type="checkbox"/> up (%)	0.0	CIBSE SHR NOM	1.25
TEST VOLTAGE (V)	220	<input type="checkbox"/> down (%)	100.0	CIBSE SHR MAX	1.25



H(□) Range:-90 - 90DEG
H(□) Interval: 1.0DEG
Test Speed: HIGH
Temperature:25.3DEG
Operators:
Test Date:2021-09-23

V(B) Range:-75 - 75DEG
V(B) Interval: 5.0DEG
Test System:EVERFINE GO-2000B_V1 SYSTEM V2.0.366
Humidity:65.0%
Test Distance:7.500m [K=1.0267]
Remarks:

ZONAL FLUX DIAGRAM

ZONAL FLUX DIAGRAM:

mm	C0	C45	C90	C135	C180	C225	C270	C315	mm	□ zone	□ total	%lum, lamp
10	2054	2027	2014	2020	2043	2016	2008	2023	0- 10	193.9	193.9	4.33,4.33
20	2043	2003	1919	1987	2035	1982	1910	1994	10- 20	568.5	762.3	17,17
30	1880	1786	1762	1763	1911	1767	1749	1768	20- 30	878.7	1641	36.7,36.7
40	1307	1251	1236	1262	1350	1267	1250	1230	30- 40	972.5	2614	58.4,58.4
50	831.3	714.1	803.5	707.2	827.9	717.0	817.5	706.2	40- 50	769.0	3383	75.6,75.6
60	450.8	419.8	463.6	401.5	426.0	406.4	451.2	414.0	50- 60	534.9	3917	87.5,87.5
70	281.6	256.5	292.7	237.9	277.2	229.1	280.9	245.5	60- 70	348.3	4266	95.3,95.3
80	141.3	90.74	0	80.40	136.3	75.41	0	86.00	70- 80	188.6	4454	99.5,99.5
90	0	0	0	0	0	0	0	0	80- 90	21.03	4475	100,100
100									90-100			
110									100-110			
120									110-120			
130									120-130			
140									130-140			
150									140-150			
160									150-160			
170									160-170			
180									170-180			
DEG	LUMINOUS INTENSITY:cd									UNIT:lm		

Conical surface Flux(90deg): 3030.8 lm

%lum = 67.7%

%lamp = 67.7%

Conical surface Flux(120deg): 3917.5 lm

%lum = 87.5%

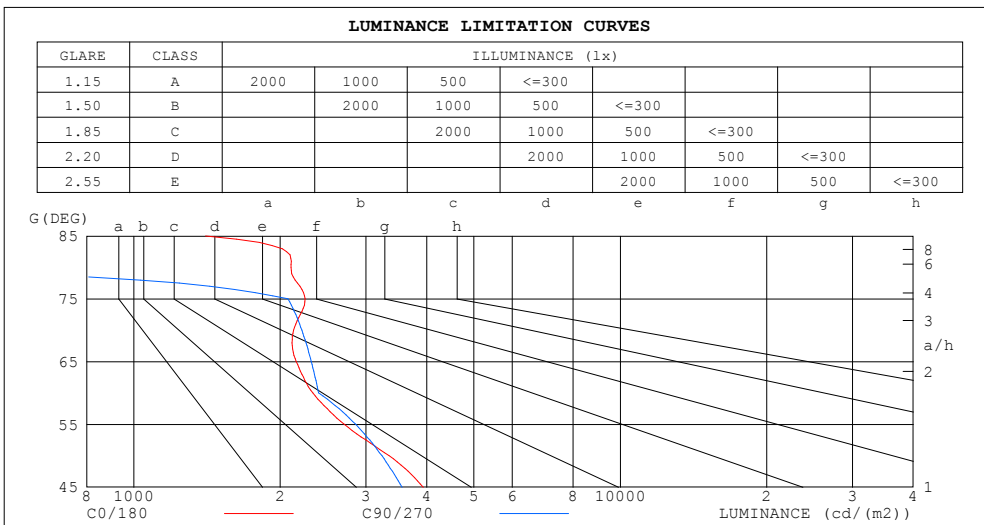
%lamp = 87.5%

H(□) Range:-90 - 90DEG
H(□) Interval: 1.0DEG
Test Speed: HIGH
Temperature:25.3DEG
Operators:
Test Date:2021-09-23

V(B) Range:-75 - 75DEG
V(B) Interval: 5.0DEG
Test System:EVERFINE GO-2000B_V1 SYSTEM V2.0.366
Humidity:65.0%
Test Distance:7.500m [K=1.0267]
Remarks:

LUMINANCE LIMITATION CURVES

Test:U:219.87V I:0.1731A P:32.286W PF:0.9667 Freq:49.99Hz Lamp Flux:4475.42x1 lm		
NAME: GLM-SPL6060-32W-D	TYPE:LED	WEIGHT:
SPEC.:	DIM.:	SERIAL No.:1
MFR.: EVERFINE	SUR.:	Shielding Angle:



LUMINANCE cd/(m2)		
G (DEG)	C0/180	C90/270
85	1404	0
80	2105	0
75	2250	2074
70	2131	2215
65	2157	2317
60	2333	2399
55	2708	2858
50	3347	3235
45	3934	3558

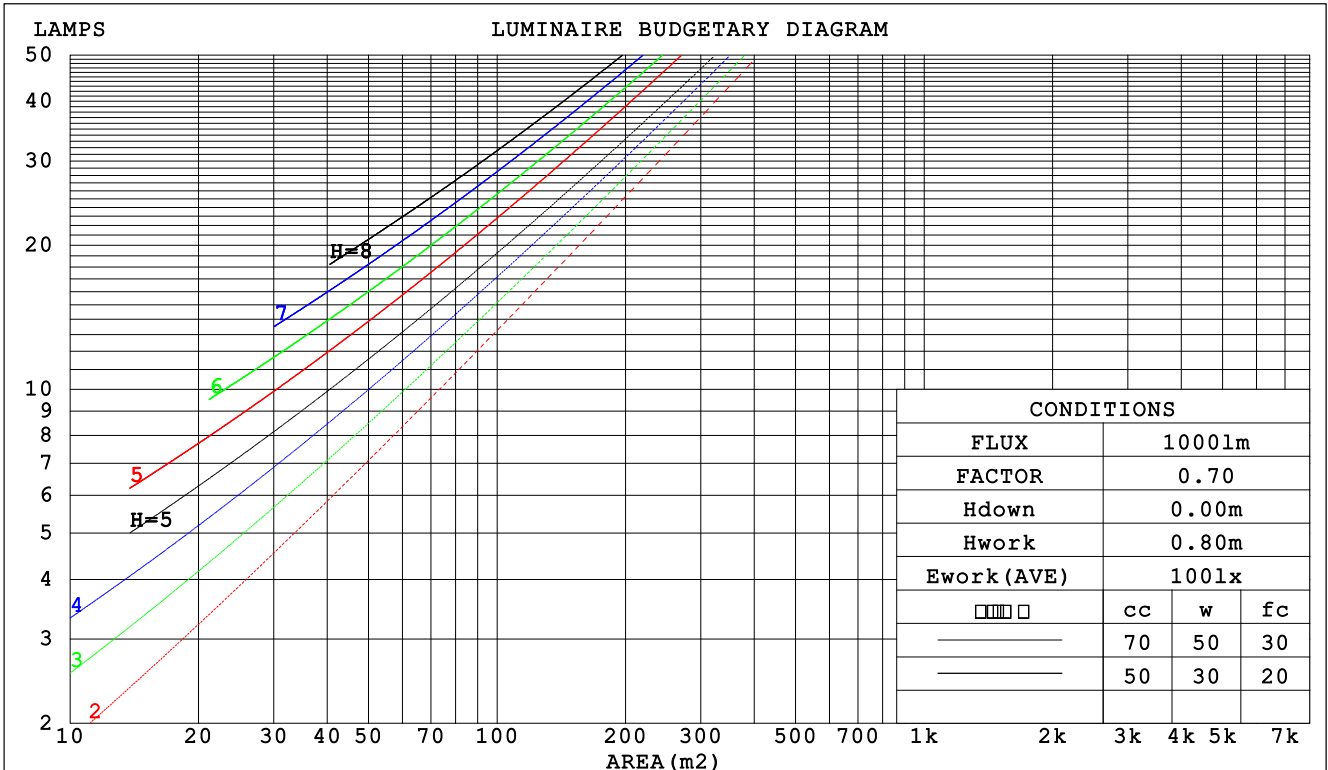
H(□) Range:-90 - 90DEG
H(□) Interval: 1.0DEG
Test Speed: HIGH
Temperature:25.3DEG
Operators:
Test Date:2021-09-23

V(B) Range:-75 - 75DEG
V(B) Interval: 5.0DEG
Test System:EVERFINE GO-2000B_V1 SYSTEM V2.0.366
Humidity:65.0%
Test Distance:7.500m [K=1.0267]
Remarks:

CU AND LUMINAIRE BUDGETARY ESTIMATE DIAGRAM

Test:U:219.87V I:0.1731A P:32.286W PF:0.9667 Freq:49.99Hz Lamp Flux:4475.42x1 lm		
NAME: GLM-SPL6060-32W-D	TYPE:LED	WEIGHT:
SPEC.:	DIM.:	SERIAL No.:1
MFR.: EVERFINE	SUR.:	Shielding Angle:

□cc	80%			70%			50%			30%			10%			0
□w	50%	30%	10%	50%	30%	10%	50%	30%	10%	50%	30%	10%	50%	30%	10%	0
□fc	20%			20%			20%			20%			20%			0
RCR	RCR:Room Cavity Ratio						Coefficients of Utilization(CU)									
0.0	1.19	1.19	1.19	1.16	1.16	1.16	1.11	1.11	1.11	1.06	1.06	1.06	1.02	1.02	1.02	1.00
1.0	1.06	1.03	.00	1.04	1.01	.98	1.00	.97	.95	.96	.94	.92	.93	.91	.89	.87
2.0	.95	.89	.84	.93	.87	.83	.89	.85	.81	.86	.82	.79	.83	.80	.77	.75
3.0	.85	.77	.72	.83	.76	.71	.80	.75	.70	.78	.73	.69	.75	.71	.68	.66
4.0	.76	.68	.62	.75	.67	.62	.72	.66	.61	.70	.65	.60	.68	.63	.59	.57
5.0	.69	.61	.55	.68	.60	.54	.66	.59	.54	.64	.58	.53	.62	.57	.53	.51
6.0	.63	.54	.49	.62	.54	.48	.60	.53	.48	.58	.52	.48	.57	.51	.47	.45
7.0	.57	.49	.44	.56	.49	.43	.55	.48	.43	.54	.47	.43	.52	.47	.43	.41
8.0	.53	.45	.39	.52	.44	.39	.51	.44	.39	.49	.43	.39	.48	.43	.39	.37
9.0	.49	.41	.36	.48	.41	.36	.47	.40	.35	.46	.40	.35	.45	.39	.35	.33
10.0	.45	.38	.33	.44	.37	.33	.44	.37	.32	.43	.37	.32	.42	.36	.32	.31



H(□) Range:-90 - 90DEG
H(□) Interval: 1.0DEG
Test Speed: HIGH
Temperature:25.3DEG
Operators:
Test Date:2021-09-23

V(B) Range:-75 - 75DEG
V(B) Interval: 5.0DEG
Test System:EVERFINE GO-2000B_V1 SYSTEM V2.0.366
Humidity:65.0%
Test Distance:7.500m [K=1.0267]
Remarks:

WEC AND CCEC

Test:U:219.87V I:0.1731A P:32.286W PF:0.9667 Freq:49.99Hz Lamp Flux:4475.42x1 lm		
NAME: GLM-SPL6060-32W-D	TYPE:LED	WEIGHT:
SPEC.:	DIM.:	SERIAL No.:1
MFR.: EVERFINE	SUR.:	Shielding Angle:

<input type="checkbox"/> cc	80%	70%	50%	30%	10%	0
<input type="checkbox"/> w	50% 30% 10%	50% 30% 10%	50% 30% 10%	50% 30% 10%	50% 30% 10%	0
<input type="checkbox"/> fc	20%	20%	20%	20%	20%	0
RCR	RCR:Room Cavity Ratio		Wall Exitance Coefficients (WEC)			
0.0						
1.0	.260 .148 .047	.253 .144 .046	.240 .138 .044	.228 .132 .042	.217 .126 .041	
2.0	.251 .137 .042	.245 .135 .042	.233 .130 .040	.223 .125 .039	.213 .121 .038	
3.0	.236 .126 .038	.231 .124 .037	.221 .120 .036	.212 .116 .036	.203 .113 .035	
4.0	.221 .115 .034	.216 .113 .033	.208 .110 .033	.200 .107 .032	.192 .104 .032	
5.0	.207 .105 .031	.203 .104 .030	.195 .102 .030	.188 .099 .029	.181 .097 .029	
6.0	.194 .097 .028	.190 .096 .028	.183 .094 .027	.177 .092 .027	.171 .090 .027	
7.0	.182 .090 .026	.179 .089 .025	.173 .087 .025	.167 .086 .025	.161 .084 .025	
8.0	.171 .084 .024	.168 .083 .023	.163 .081 .023	.158 .080 .023	.153 .078 .023	
9.0	.162 .078 .022	.159 .078 .022	.154 .076 .022	.149 .075 .021	.145 .074 .021	
10.0	.153 .073 .020	.151 .073 .020	.146 .072 .020	.142 .070 .020	.138 .069 .020	

<input type="checkbox"/> cc	80%	70%	50%	30%	10%	0
<input type="checkbox"/> w	50% 30% 10%	50% 30% 10%	50% 30% 10%	50% 30% 10%	50% 30% 10%	0
<input type="checkbox"/> fc	20%	20%	20%	20%	20%	0
RCR	RCR:Room Cavity Ratio		Ceiling Cavity Exitance Coefficients (CCEC)			
0.0	.190 .190 .190	.163 .163 .163	.111 .111 .111	.064 .064 .064	.020 .020 .020	
1.0	.177 .157 .138	.151 .134 .119	.104 .092 .082	.060 .053 .048	.019 .017 .015	
2.0	.167 .132 .103	.143 .114 .089	.098 .079 .062	.056 .046 .036	.018 .015 .012	
3.0	.158 .114 .079	.135 .098 .069	.093 .068 .048	.054 .040 .028	.017 .013 .009	
4.0	.150 .100 .062	.129 .087 .054	.088 .060 .038	.051 .035 .023	.016 .012 .007	
5.0	.142 .090 .051	.122 .078 .044	.084 .054 .031	.049 .032 .018	.016 .010 .006	
6.0	.136 .081 .042	.117 .070 .037	.080 .049 .026	.047 .029 .015	.015 .009 .005	
7.0	.129 .074 .035	.111 .064 .031	.077 .045 .022	.045 .027 .013	.014 .009 .004	
8.0	.123 .068 .031	.106 .059 .027	.073 .042 .019	.043 .025 .011	.014 .008 .004	
9.0	.117 .063 .027	.101 .055 .023	.070 .039 .017	.041 .023 .010	.013 .007 .003	
10.0	.112 .059 .024	.097 .051 .021	.067 .036 .015	.039 .021 .009	.013 .007 .003	

H(□) Range:-90 - 90DEG
H(□) Interval: 1.0DEG
Test Speed: HIGH
Temperature:25.3DEG
Operators:
Test Date:2021-09-23

V(B) Range:-75 - 75DEG
V(B) Interval: 5.0DEG
Test System:EVERFINE GO-2000B_V1 SYSTEM V2.0.366
Humidity:65.0%
Test Distance:7.500m [K=1.0267]
Remarks:

UGR(Unified Glare Rating) Table

Test:U:219.87V I:0.1731A P:32.286W PF:0.9667 Freq:49.99Hz Lamp Flux:4475.42x1 lm										
NAME: GLM-SPL6060-32W-D					TYPE:LED			WEIGHT:		
SPEC.:					DIM.:			SERIAL No.:1		
MFR.: EVERFINE					SUR.:			Shielding Angle:		
ceiling/cavity	0.7	0.7	0.5	0.5	0.3	0.7	0.7	0.5	0.5	0.3
walls	0.5	0.3	0.5	0.3	0.3	0.5	0.3	0.5	0.3	0.3
working plane	0.2	0.2	0.2	0.2	0.2	0.2	0.2	0.2	0.2	0.2
Room dimensions	Viewed crosswise					Viewed endwise				
x = 2H y = 2H	16.0	17.3	16.2	17.5	17.7	15.9	17.2	16.1	17.4	17.6
3H	17.0	18.3	17.3	18.5	18.7	17.0	18.3	17.3	18.5	18.7
4H	17.6	18.8	17.9	19.0	19.3	17.5	18.7	17.8	19.0	19.2
6H	18.0	19.1	18.3	19.4	19.6	17.6	18.7	17.9	18.9	19.2
8H	18.1	19.2	18.4	19.5	19.7	17.5	18.6	17.8	18.9	19.1
12H	18.1	19.2	18.5	19.5	19.8	17.5	18.5	17.8	18.8	19.1
4H 2H	16.3	17.5	16.6	17.7	17.9	16.2	17.3	16.5	17.6	17.8
3H	17.5	18.5	17.9	18.8	19.1	17.5	18.5	17.9	18.8	19.1
4H	18.2	19.2	18.6	19.5	19.8	18.1	19.1	18.5	19.4	19.7
6H	18.8	19.6	19.2	19.9	20.3	18.2	19.1	18.6	19.4	19.8
8H	18.9	19.7	19.3	20.1	20.4	18.2	18.9	18.6	19.3	19.7
12H	19.0	19.7	19.4	20.1	20.5	18.1	18.8	18.6	19.2	19.6
8H 4H	18.4	19.1	18.8	19.5	19.9	18.3	19.1	18.7	19.4	19.8
6H	19.1	19.7	19.5	20.1	20.5	18.4	19.0	18.8	19.4	19.9
8H	19.3	19.9	19.8	20.3	20.7	18.4	18.9	18.8	19.3	19.8
12H	19.4	19.9	19.9	20.3	20.8	18.3	18.8	18.8	19.2	19.7
12H 4H	18.3	19.0	18.8	19.4	19.8	18.3	19.0	18.7	19.4	19.8
6H	19.0	19.6	19.5	20.0	20.5	18.4	19.0	18.9	19.4	19.9
8H	19.3	19.8	19.8	20.2	20.7	18.4	18.9	18.9	19.3	19.8
Variations with the observer position at spacings:										
S = 1.0H	+ 0.4 / - 0.5					+ 0.5 / - 0.5				
1.5H	+ 0.2 / - 0.2					+ 0.3 / - 0.3				
2.0H	+ 0.7 / - 0.7					+ 0.6 / - 0.7				

CIE Pub.117, 4475 lm Total Lamp Luminous Flux Corrected (8log(F/F0) = 5.2)

H(□) Range:-90 - 90DEG
H(□) Interval: 1.0DEG
Test Speed: HIGH
Temperature:25.3DEG
Operators:
Test Date:2021-09-23

V(B) Range:-75 - 75DEG
V(B) Interval: 5.0DEG
Test System:EVERFINE GO-2000B_V1 SYSTEM V2.0.366
Humidity:65.0%
Test Distance:7.500m [K=1.0267]
Remarks:

UTILIZATION FACTORS TABLE

Test:U:219.87V I:0.1731A P:32.286W PF:0.9667 Freq:49.99Hz Lamp Flux:4475.42x1 lm		
NAME: GLM-SPL6060-32W-D	TYPE:LED	WEIGHT:
SPEC.:	DIM.:	SERIAL No.:1
MFR.: EVERFINE	SUR.:	Shielding Angle:

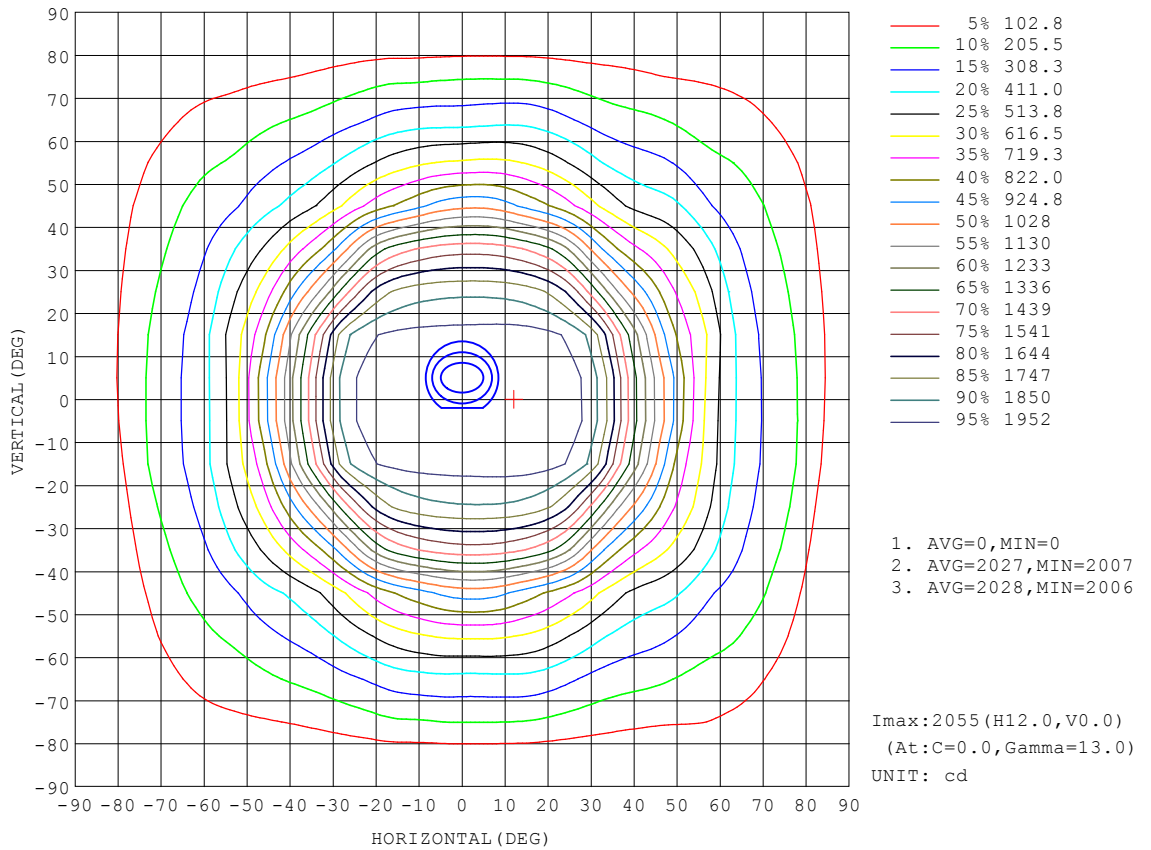
REFLECTANCE										
Ceiling	0.8	0.8	0.8	0.7	0.7	0.7	0.5	0.5	0.5	0
Walls	0.7	0.5	0.3	0.7	0.5	0.3	0.7	0.5	0.3	0
Working plane	0.2	0.2	0.2	0.2	0.2	0.2	0.2	0.2	0.2	0
ROOM INDEX	UTILIZATION FACTORS (PERCENT) $k(RI) \times RCR = 5$									
k = 0.60	66	55	49	65	55	49	64	55	49	43
0.80	75	65	59	74	65	59	73	64	59	53
1.00	83	74	67	82	73	67	80	74	67	61
1.25	90	81	75	88	80	74	86	79	74	67
1.50	94	86	80	92	85	79	90	83	78	72
2.00	100	93	87	98	91	86	95	89	85	78
2.50	103	96	91	101	95	91	97	93	89	81
3.00	106	100	95	104	98	94	100	96	92	84
4.00	109	104	100	107	103	99	103	99	96	88
5.00	111	107	104	109	105	102	104	101	99	90
ROOM INDEX	UF(total)									Direct
According to DIN EN 13032-2 2004			Suspended				SHRNOM = 1.25			

H(□) Range:-90 - 90DEG
H(□) Interval: 1.0DEG
Test Speed: HIGH
Temperature:25.3DEG
Operators:
Test Date:2021-09-23

V(B) Range:-75 - 75DEG
V(B) Interval: 5.0DEG
Test System:EVERFINE GO-2000B_V1 SYSTEM V2.0.366
Humidity:65.0%
Test Distance:7.500m [K=1.0267]
Remarks:

ISOCANDELA DIAGRAM

Test:U:219.87V I:0.1731A P:32.286W PF:0.9667 Freq:49.99Hz Lamp Flux:4475.42x1 lm		
NAME: GLM-SPL6060-32W-D	TYPE:LED	WEIGHT:
SPEC.:	DIM.:	SERIAL No.:1
MFR.: EVERFINE	SUR.:	Shielding Angle:

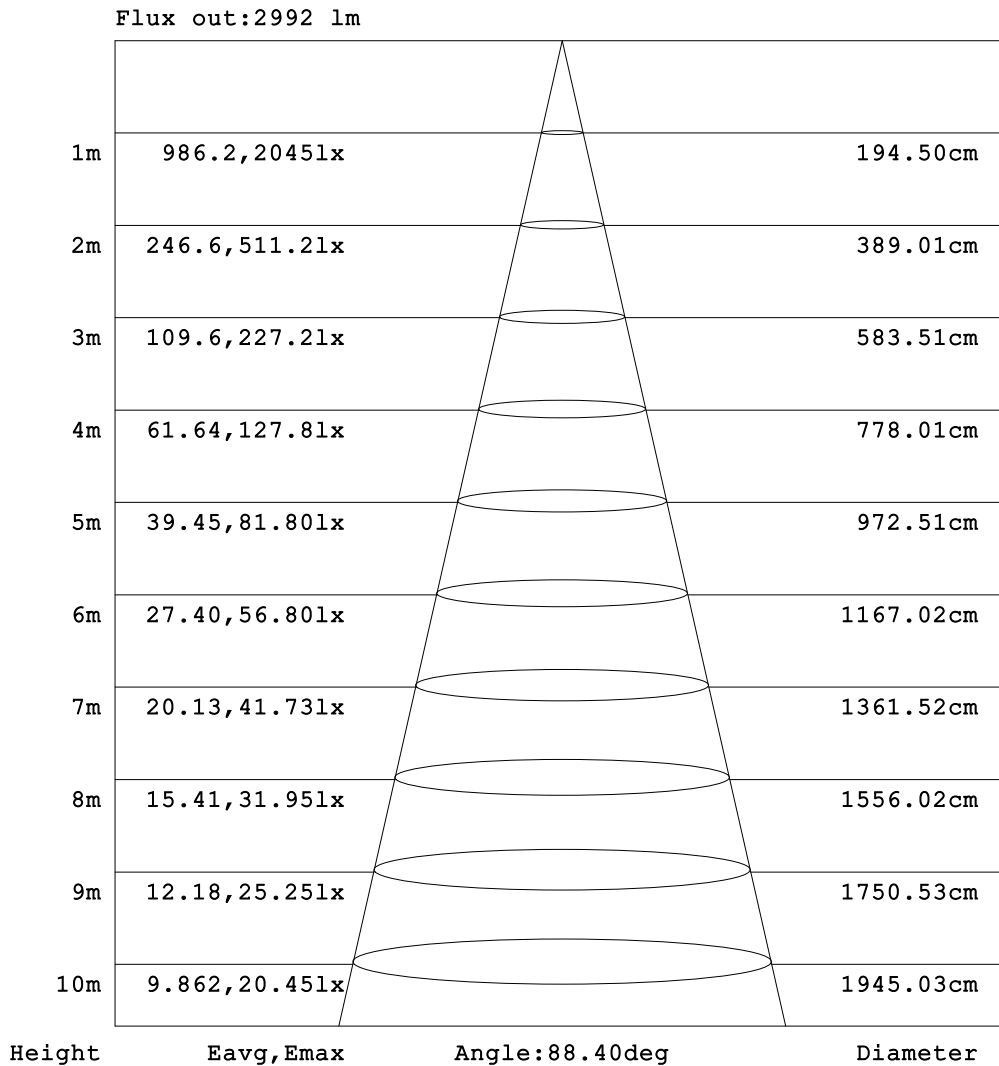


H(□) Range:-90 - 90DEG
 H(□) Interval: 1.0DEG
 Test Speed: HIGH
 Temperature:25.3DEG
 Operators:
 Test Date:2021-09-23

V(B) Range:-75 - 75DEG
 V(B) Interval: 5.0DEG
 Test System:EVERFINE GO-2000B_V1 SYSTEM V2.0.366
 Humidity:65.0%
 Test Distance:7.500m [K=1.0267]
 Remarks:

AAI Figure

Test:U:219.87V I:0.1731A P:32.286W PF:0.9667 Freq:49.99Hz Lamp Flux:4475.42x1 lm		
NAME: GLM-SPL6060-32W-D	TYPE:LED	WEIGHT:
SPEC.:	DIM.:	SERIAL No.:1
MFR.: EVERFINE	SUR.:	Shielding Angle:



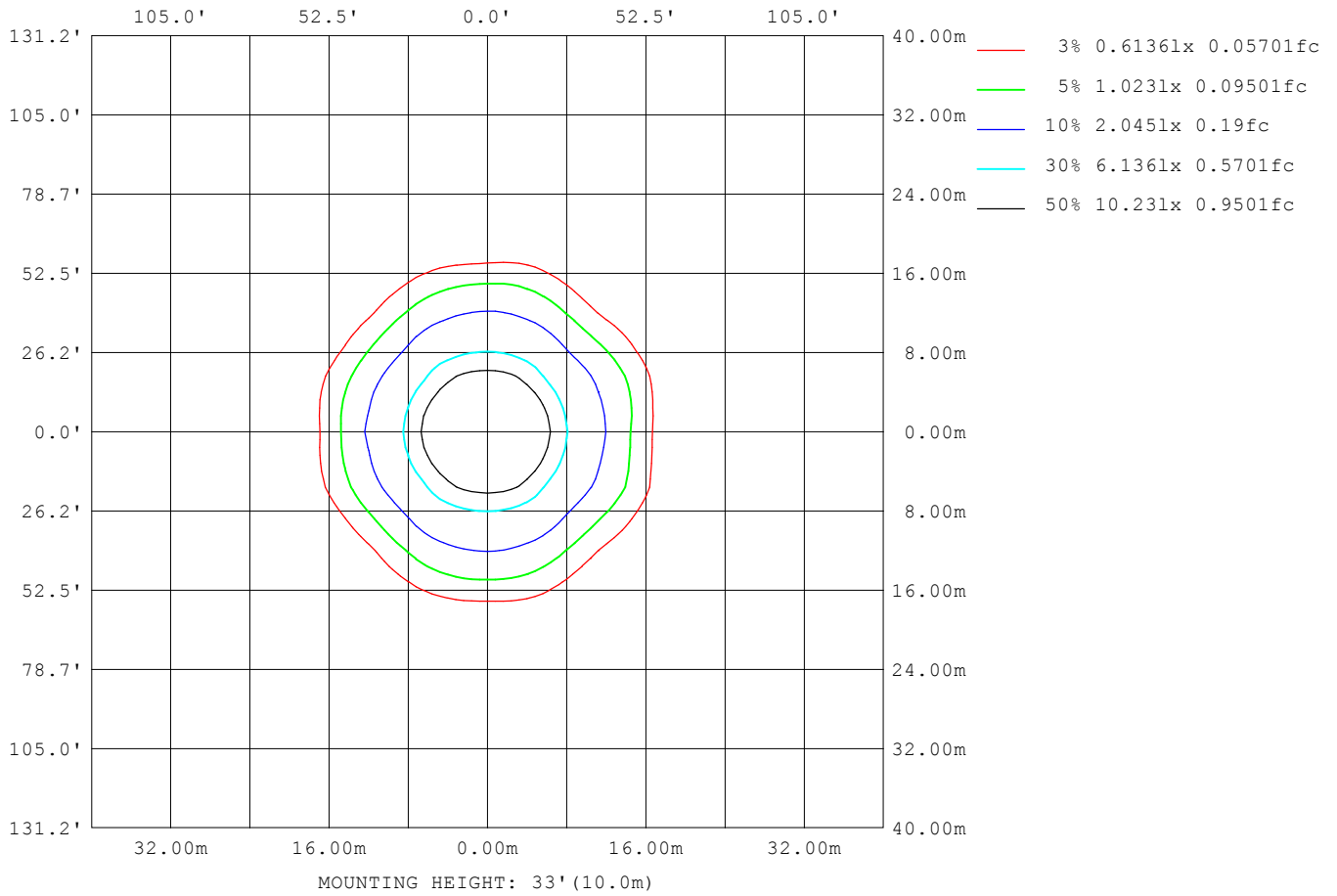
Note:The Curves indicate the illuminated area and the average illumination when the luminaire is at different distance.

H(□) Range:-90 - 90DEG
H(□) Interval: 1.0DEG
Test Speed: HIGH
Temperature:25.3DEG
Operators:
Test Date:2021-09-23

V(B) Range:-75 - 75DEG
V(B) Interval: 5.0DEG
Test System:EVERFINE GO-2000B_V1 SYSTEM V2.0.366
Humidity:65.0%
Test Distance:7.500m [K=1.0267]
Remarks:

ISOLUX DIAGRAM

Test:U:219.87V I:0.1731A P:32.286W PF:0.9667 Freq:49.99Hz Lamp Flux:4475.42x1 lm		
NAME: GLM-SPL6060-32W-D	TYPE:LED	WEIGHT:
SPEC.:	DIM.:	SERIAL No.:1
MFR.: EVERFINE	SUR.:	Shielding Angle:



H(□) Range:-90 - 90DEG
H(□) Interval: 1.0DEG
Test Speed: HIGH
Temperature:25.3DEG
Operators:
Test Date:2021-09-23

V(B) Range:-75 - 75DEG
V(B) Interval: 5.0DEG
Test System:EVERFINE GO-2000B_V1 SYSTEM V2.0.366
Humidity:65.0%
Test Distance:7.500m [K=1.0267]
Remarks:

LED Avg.L Report

Test:U:219.87V I:0.1731A P:32.286W PF:0.9667 Freq:49.99Hz Lamp Flux:4475.42x1 lm		
NAME: GLM-SPL6060-32W-D	TYPE:LED	WEIGHT:
SPEC.:	DIM.:	SERIAL No.:1
MFR.: EVERFINE	SUR.:	Shielding Angle:

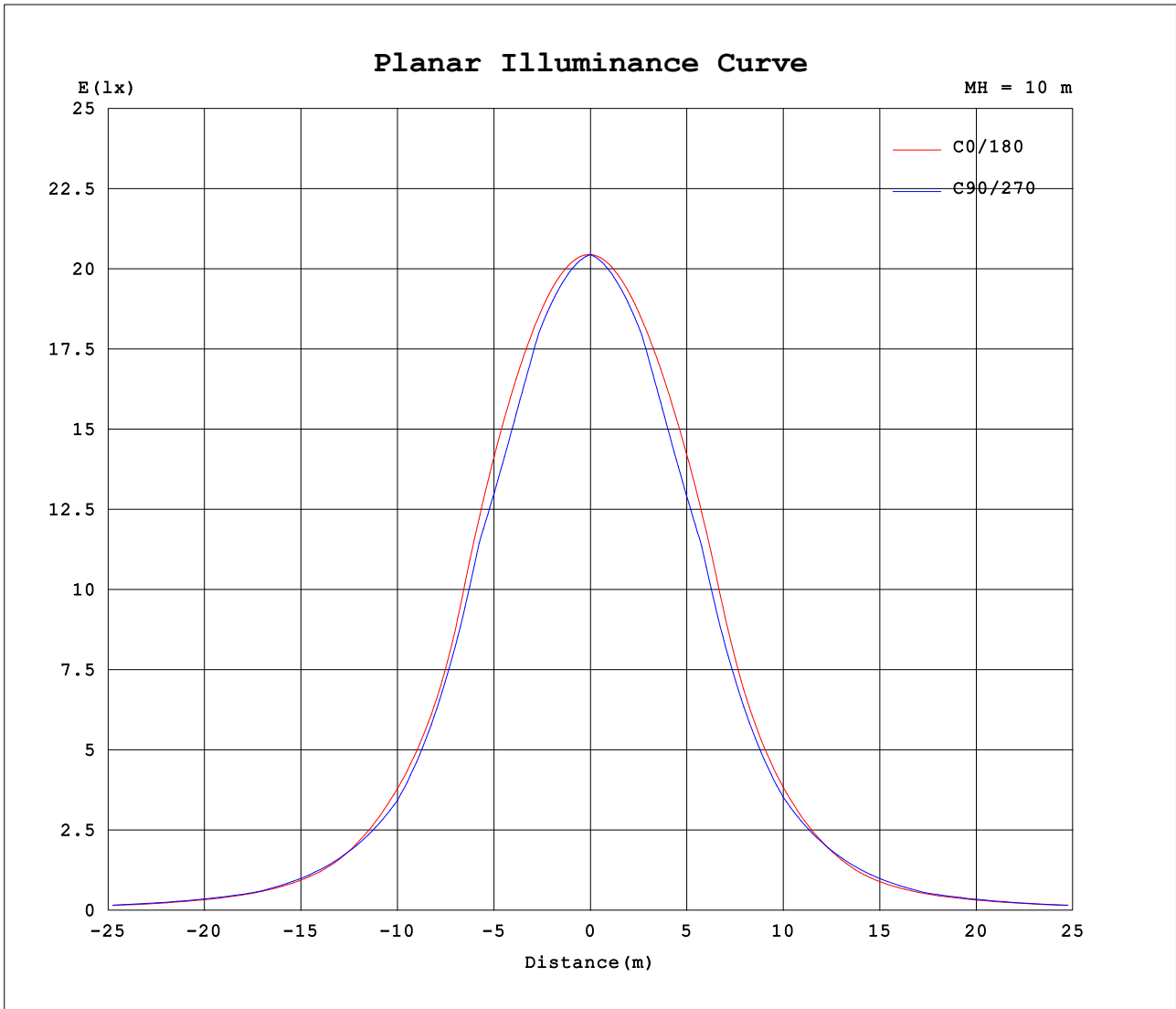
AvgL	cd/m2
L_0~180 (65) av	2134
L_0~180 (75) av	2219
L_0~180 (85) av	1377
L_90~270 (65) av	2275
L_90~270 (75) av	2013
L_90~270 (85) av	0
L_45 (65) av	1967
L_45 (75) av	1671
L_45 (85) av	0

Standard: GB/T 29293-2012

H(□) Range:-90 - 90DEG
H(□) Interval: 1.0DEG
Test Speed: HIGH
Temperature:25.3DEG
Operators:
Test Date:2021-09-23

V(B) Range:-75 - 75DEG
V(B) Interval: 5.0DEG
Test System:EVERFINE GO-2000B_V1 SYSTEM V2.0.366
Humidity:65.0%
Test Distance:7.500m [K=1.0267]
Remarks:

Planar Illuminance Curve



H(□) Range:-90 - 90DEG
H(□) Interval: 1.0DEG
Test Speed: HIGH
Temperature:25.3DEG
Operators:
Test Date:2021-09-23

V(B) Range:-75 - 75DEG
V(B) Interval: 5.0DEG
Test System:EVERFINE GO-2000B_V1 SYSTEM V2.0.366
Humidity:65.0%
Test Distance:7.500m [K=1.0267]
Remarks:

LUMINOUS DISTRIBUTION INTENSITY DATA

Test:U:219.87V I:0.1731A P:32.286W PF:0.9667 Freq:49.99Hz Lamp Flux:4475.42x1 lm		
NAME: GLM-SPL6060-32W-D	TYPE:LED	WEIGHT:
SPEC.:	DIM.:	SERIAL No.:1
MFR.: EVERFINE	SUR.:	Shielding Angle:

Table--1

UNIT: cd

C (DEG) □ (DEG)	0	5	10	15	20	25	30	35	40	45	50	55	60	65	70	75	80	85	90
0	2045	2045	2045	2045	2045	2045	2045	2045	2045	2045	2045	2045	2045	2045	2045	2045	2045	2045	2045
5	2049	2047	2046	2044	2043	2041	2040	2038	2037	2036	2034	2033	2032	2031	2031	2030	2029	2029	2029
10	2054	2050	2047	2044	2041	2038	2035	2032	2030	2027	2025	2023	2021	2019	2018	2016	2015	2014	2014
15	2055	2050	2045	2040	2036	2032	2028	2024	2020	2017	2014	2011	2008	2006	2003	2001	1999	1998	1997
20	2043	2037	2031	2025	2018	2013	2009	2007	2005	2003	1991	1974	1959	1948	1938	1930	1925	1921	1919
25	2001	1994	1989	1978	1969	1969	1973	1977	1943	1917	1898	1885	1875	1866	1858	1851	1846	1842	1840
30	1880	1877	1872	1849	1855	1882	1864	1815	1789	1786	1784	1780	1775	1772	1770	1767	1765	1763	1762
35	1593	1611	1596	1567	1632	1635	1574	1560	1574	1583	1597	1618	1603	1577	1551	1531	1515	1504	1499
40	1307	1323	1291	1306	1331	1263	1258	1262	1235	1251	1306	1328	1309	1282	1259	1246	1242	1239	1236
45	1075	1084	1022	1077	1031	1020	999	951	957	984	994	997	991	979	968	968	976	977	972
50	831	837	799	810	806	815	780	764	736	714	724	730	734	751	767	782	797	804	804
55	600	622	638	628	660	646	629	583	549	533	546	563	588	611	630	638	641	637	633
60	451	461	489	512	520	513	479	451	428	420	428	445	462	478	493	495	485	471	464
65	352	355	361	378	385	363	360	354	348	337	327	323	341	366	388	395	390	382	378
70	282	291	293	292	281	267	264	260	256	256	249	249	259	275	290	300	299	295	293
75	225	227	221	216	205	203	190	186	183	178	172	171	178	188	200	209	209	209	207
80	141	134	125	125	123	127	123	120	112	90.7	72.2	57.3	44.8	33.4	23.0	13.8	6.20	1.55	0.00
85	47.3	40.9	37.9	36.2	45.1	24.6	0.00	0.00	0.00	0.00	0.00	0.00	0.00	0.00	0.00	0.00	0.00	0.00	0.00
90	0.00	0.00	0.00	0.00	0.00	0.00	0.00	0.00	0.00	0.00	0.00	0.00	0.00	0.00	0.00	0.00	0.00	0.00	0.00

H(□) Range:-90 - 90DEG
H(□) Interval: 1.0DEG
Test Speed: HIGH
Temperature:25.3DEG
Operators:
Test Date:2021-09-23

V(B) Range:-75 - 75DEG
V(B) Interval: 5.0DEG
Test System:EVERFINE GO-2000B_V1 SYSTEM V2.0.366
Humidity:65.0%
Test Distance:7.500m [K=1.0267]
Remarks:

LUMINOUS DISTRIBUTION INTENSITY DATA

Test:U:219.87V I:0.1731A P:32.286W PF:0.9667 Freq:49.99Hz Lamp Flux:4475.42x1 lm		
NAME: GLM-SPL6060-32W-D	TYPE:LED	WEIGHT:
SPEC.:	DIM.:	SERIAL No.:1
MFR.: EVERFINE	SUR.:	Shielding Angle:

Table--2

UNIT: cd

C (DEG) \ □ (DEG)	95	100	105	110	115	120	125	130	135	140	145	150	155	160	165	170	175	180	185
0	2045	2045	2045	2045	2045	2045	2045	2045	2045	2045	2045	2045	2045	2045	2045	2045	2045	2045	2045
5	2029	2029	2029	2029	2029	2030	2030	2031	2032	2033	2034	2035	2036	2038	2039	2040	2042	2043	2041
10	2013	2013	2013	2014	2015	2016	2017	2018	2020	2022	2024	2026	2029	2031	2034	2037	2040	2043	2040
15	1997	1997	1997	1998	1999	2000	2002	2004	2006	2009	2012	2015	2019	2023	2027	2032	2037	2043	2037
20	1920	1922	1925	1931	1939	1949	1961	1977	1987	1990	1993	1997	2001	2005	2009	2016	2025	2035	2025
25	1840	1840	1842	1846	1852	1860	1872	1888	1906	1928	1957	1958	1963	1967	1967	1970	1986	2005	1986
30	1762	1761	1760	1759	1758	1755	1751	1753	1763	1787	1813	1846	1864	1867	1862	1844	1866	1911	1868
35	1498	1503	1514	1533	1561	1592	1617	1581	1540	1522	1555	1598	1609	1612	1625	1581	1585	1657	1587
40	1235	1236	1239	1250	1268	1281	1280	1275	1262	1229	1212	1249	1297	1298	1307	1298	1278	1350	1280
45	964	953	948	957	975	992	991	959	925	932	953	960	991	1025	1003	1037	999	1087	1003
50	800	791	776	761	742	710	691	699	707	704	716	752	747	761	751	765	756	828	762
55	634	631	625	617	602	582	554	518	489	517	548	555	586	575	593	575	560	578	564
60	471	480	484	479	465	446	426	411	402	394	394	428	436	464	439	437	428	426	430
65	383	384	382	374	357	343	332	318	313	312	317	311	322	327	340	342	343	345	343
70	296	294	293	287	271	257	244	236	238	239	234	232	239	242	246	254	269	277	265
75	207	202	203	199	185	176	168	164	164	163	162	169	175	176	171	181	203	219	204
80	1.54	5.96	13.4	22.8	32.3	42.7	53.4	65.3	80.4	95.8	102	107	108	105	98.2	90.9	96.4	136	122
85	0.00	0.00	0.00	0.00	0.00	0.00	0.00	0.00	0.00	0.00	0.00	0.00	19.1	28.5	25.7	22.0	8.96	45.4	30.7
90	0.00	0.00	0.00	0.00	0.00	0.00	0.00	0.00	0.00	0.00	0.00	0.00	0.00	0.00	0.00	0.00	0.00	0.00	0.00

H(□) Range:-90 - 90DEG
H(□) Interval: 1.0DEG
Test Speed: HIGH
Temperature:25.3DEG
Operators:
Test Date:2021-09-23

V(B) Range:-75 - 75DEG
V(B) Interval: 5.0DEG
Test System:EVERFINE GO-2000B_V1 SYSTEM V2.0.366
Humidity:65.0%
Test Distance:7.500m [K=1.0267]
Remarks:

LUMINOUS DISTRIBUTION INTENSITY DATA

Test:U:219.87V I:0.1731A P:32.286W PF:0.9667 Freq:49.99Hz Lamp Flux:4475.42x1 lm		
NAME: GLM-SPL6060-32W-D	TYPE:LED	WEIGHT:
SPEC.:	DIM.:	SERIAL No.:1
MFR.: EVERFINE	SUR.:	Shielding Angle:

Table--3

UNIT: cd

C (DEG) □ (DEG)	190	195	200	205	210	215	220	225	230	235	240	245	250	255	260	265	270	275	280
0	2045	2045	2045	2045	2045	2045	2045	2045	2045	2045	2045	2045	2045	2045	2045	2045	2045	2045	2045
5	2040	2038	2037	2035	2034	2033	2031	2030	2029	2028	2028	2027	2026	2026	2026	2026	2026	2026	2027
10	2036	2033	2030	2026	2024	2021	2018	2016	2014	2012	2011	2010	2009	2008	2008	2008	2008	2009	2010
15	2031	2026	2021	2016	2012	2008	2004	2001	1998	1995	1993	1992	1990	1990	1989	1989	1989	1990	1992
20	2016	2008	2003	1999	1994	1989	1985	1982	1971	1955	1942	1932	1923	1917	1913	1910	1910	1911	1915
25	1970	1967	1966	1962	1957	1954	1926	1903	1885	1869	1856	1847	1840	1835	1831	1830	1829	1831	1834
30	1847	1865	1871	1868	1849	1815	1790	1767	1756	1753	1755	1755	1754	1753	1752	1750	1749	1749	1750
35	1584	1628	1616	1615	1603	1558	1526	1548	1591	1624	1596	1562	1534	1515	1505	1499	1499	1504	1513
40	1301	1310	1300	1301	1250	1212	1231	1267	1286	1292	1288	1272	1256	1249	1248	1248	1250	1252	1254
45	1041	1009	1027	991	957	949	933	930	969	1004	1001	979	962	962	976	989	999	1005	1002
50	778	764	764	743	748	717	710	717	712	707	722	745	762	782	801	811	817	821	815
55	583	600	576	580	551	553	528	504	529	561	584	600	611	620	628	629	632	642	649
60	440	441	462	433	426	397	401	406	412	422	438	456	468	470	463	451	451	466	484
65	343	342	329	321	308	315	310	308	310	318	328	345	361	367	368	364	365	374	385
70	254	248	249	240	227	228	232	229	226	235	247	262	276	278	279	278	281	286	292
75	192	185	183	176	162	155	157	157	157	162	170	181	190	188	188	192	195	197	199
80	118	115	111	107	101	93.9	89.3	75.4	62.0	51.3	41.5	31.7	21.8	12.4	5.54	1.43	0.00	1.47	5.88
85	38.9	33.2	31.5	18.6	0.00	0.00	0.00	0.00	0.00	0.00	0.00	0.00	0.00	0.00	0.00	0.00	0.00	0.00	0.00
90	0.00	0.00	0.00	0.00	0.00	0.00	0.00	0.00	0.00	0.00	0.00	0.00	0.00	0.00	0.00	0.00	0.00	0.00	0.00

H(□) Range:-90 - 90DEG
H(□) Interval: 1.0DEG
Test Speed: HIGH
Temperature:25.3DEG
Operators:
Test Date:2021-09-23

V(B) Range:-75 - 75DEG
V(B) Interval: 5.0DEG
Test System:EVERFINE GO-2000B_V1 SYSTEM V2.0.366
Humidity:65.0%
Test Distance:7.500m [K=1.0267]
Remarks:

LUMINOUS DISTRIBUTION INTENSITY DATA

Test:U:219.87V I:0.1731A P:32.286W PF:0.9667 Freq:49.99Hz Lamp Flux:4475.42x1 lm		
NAME: GLM-SPL6060-32W-D	TYPE:LED	WEIGHT:
SPEC.:	DIM.:	SERIAL No.:1
MFR.: EVERFINE	SUR.:	Shielding Angle:

Table--4

UNIT: cd

C (DEG) □ (DEG)	285	290	295	300	305	310	315	320	325	330	335	340	345	350	355				
0	2045	2045	2045	2045	2045	2045	2045	2045	2045	2045	2045	2045	2045	2045	2045				
5	2027	2028	2029	2030	2031	2032	2034	2035	2037	2038	2040	2042	2043	2045	2047				
10	2011	2012	2014	2016	2018	2021	2023	2026	2029	2032	2036	2039	2043	2046	2050				
15	1993	1996	1998	2001	2005	2008	2011	2015	2019	2023	2028	2033	2038	2043	2049				
20	1920	1928	1938	1950	1964	1982	1994	1997	2000	2002	2007	2014	2022	2029	2035				
25	1839	1845	1852	1861	1871	1885	1905	1932	1968	1965	1961	1963	1973	1986	1992				
30	1751	1752	1753	1756	1762	1765	1768	1773	1802	1853	1874	1849	1845	1869	1876				
35	1525	1541	1561	1582	1593	1574	1562	1556	1545	1562	1628	1628	1563	1594	1609				
40	1254	1261	1279	1302	1314	1288	1230	1215	1245	1246	1254	1324	1300	1286	1320				
45	990	983	990	994	990	981	968	941	936	988	1012	1023	1067	1019	1081				
50	798	780	764	744	728	717	706	727	757	778	813	807	820	815	847				
55	646	634	613	585	557	541	530	547	584	631	643	663	649	670	638				
60	493	487	472	455	436	418	414	428	455	480	511	520	525	513	471				
65	390	379	357	332	308	313	327	342	351	358	360	382	375	359	354				
70	293	283	269	253	240	240	246	247	250	254	257	270	284	286	286				
75	200	194	185	175	169	168	170	173	172	174	193	200	210	214	220				
80	13.1	22.4	32.9	44.5	57.9	72.3	86.0	101	108	114	123	128	135	142	146				
85	0.00	0.00	0.00	0.00	0.00	0.00	0.00	0.00	0.00	0.00	23.7	47.9	47.0	55.4	66.8				
90	0.00	0.00	0.00	0.00	0.00	0.00	0.00	0.00	0.00	0.00	0.00	0.00	0.00	0.00	0.00				

H(□) Range:-90 - 90DEG
H(□) Interval: 1.0DEG
Test Speed: HIGH
Temperature:25.3DEG
Operators:
Test Date:2021-09-23

V(B) Range:-75 - 75DEG
V(B) Interval: 5.0DEG
Test System:EVERFINE GO-2000B_V1 SYSTEM V2.0.366
Humidity:65.0%
Test Distance:7.500m [K=1.0267]
Remarks: