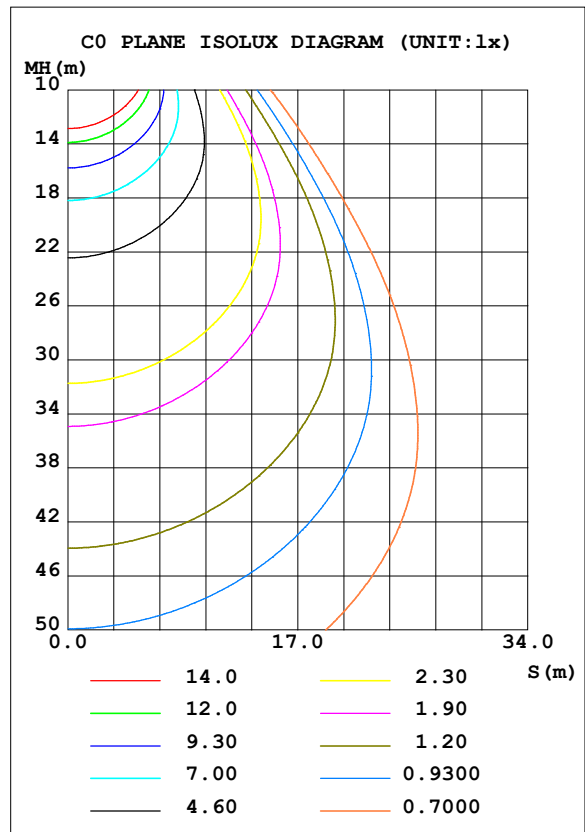
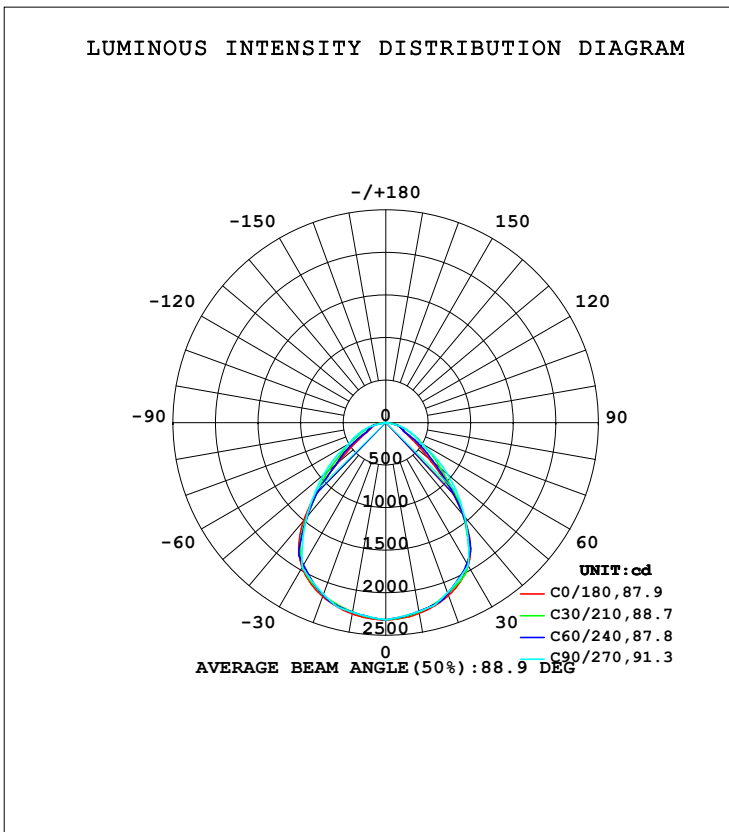


LUMINAIRE PHOTOMETRIC TEST REPORT

Test:U:218.92V I:0.1528A P:32.106W PF:0.9599 Freq:49.99Hz Lamp Flux:4778.47x1 lm		
NAME: GLM-BPL6060A-32W-C	TYPE:LED	WEIGHT:
SPEC.:	DIM.:	SERIAL No.:1
MFR.: EVERFINE	SUR.:	Shielding Angle:

DATA OF LAMP		PHOTOMETRIC DATA Eff: 148.83 lm/W			
MODEL		I _{max} (cd)	2317	S/MH (C0/180)	1.25
NOMINAL POWER (W)	32	LOR (%)	100.0	S/MH (C90/270)	1.24
RATED VOLTAGE (V)	220.0	TOTAL FLUX (lm)	4778.5	<input type="checkbox"/> UP, DN (C0-180)	0.0, 49.6
NOMINAL FLUX (lm)	4778.47	CIE CLASS	DIRECT	<input type="checkbox"/> UP, DN (C180-360)	0.0, 50.4
LAMPS INSIDE	1	<input type="checkbox"/> up (%)	0.0	CIBSE SHR NOM	1.25
TEST VOLTAGE (V)	220	<input type="checkbox"/> down (%)	100.0	CIBSE SHR MAX	1.30



H Range: -90 - 90 DEG
H Interval: 1.0 DEG
Test Speed: HIGH
Temperature: 25.3 DEG
Operators:
Test Date: 21 October 2021

V (B) Range: -75 - 75 DEG
V (B) Interval: 5.0 DEG
Test System: EVERFINE GO-2000B_V1 SYSTEM V2.0.366
Humidity: 65.0%
Test Distance: 7.500m [K=1.0867]
Remarks:

ZONAL FLUX DIAGRAM

ZONAL FLUX DIAGRAM:

mm	C0	C45	C90	C135	C180	C225	C270	C315	mm	□ zone	□ total	%lum, lamp
10	2275	2253	2252	2252	2282	2259	2263	2260	0- 10	217.9	217.9	4.56,4.56
20	2159	2155	2126	2148	2173	2163	2146	2170	10- 20	625.3	843.2	17.6,17.6
30	1937	1890	1938	1899	1967	1919	1965	1921	20- 30	944.5	1788	37.4,37.4
40	1412	1438	1441	1498	1501	1520	1445	1499	30- 40	1072	2860	59.8,59.8
50	676.8	798.3	950.8	847.8	738.4	833.9	958.0	823.6	40- 50	863.1	3723	77.9,77.9
60	308.6	455.1	466.4	470.0	322.5	452.5	503.9	460.8	50- 60	539.7	4262	89.2,89.2
70	202.7	264.7	280.3	270.2	191.2	256.3	301.9	265.1	60- 70	315.6	4578	95.8,95.8
80	100.3	102.4	0	100.9	102.5	104.2	0	108.5	70- 80	182.5	4760	99.6,99.6
90	0	0	0	0	0	0	0	0	80- 90	17.98	4778	100,100
100									90-100			
110									100-110			
120									110-120			
130									120-130			
140									130-140			
150									140-150			
160									150-160			
170									160-170			
180									170-180			
DEG	LUMINOUS INTENSITY:cd									UNIT:lm		

Conical surface Flux(90deg): 3333.3 lm

%lum = 69.8%

%lamp = 69.8%

Conical surface Flux(120deg): 4262.4 lm

%lum = 89.2%

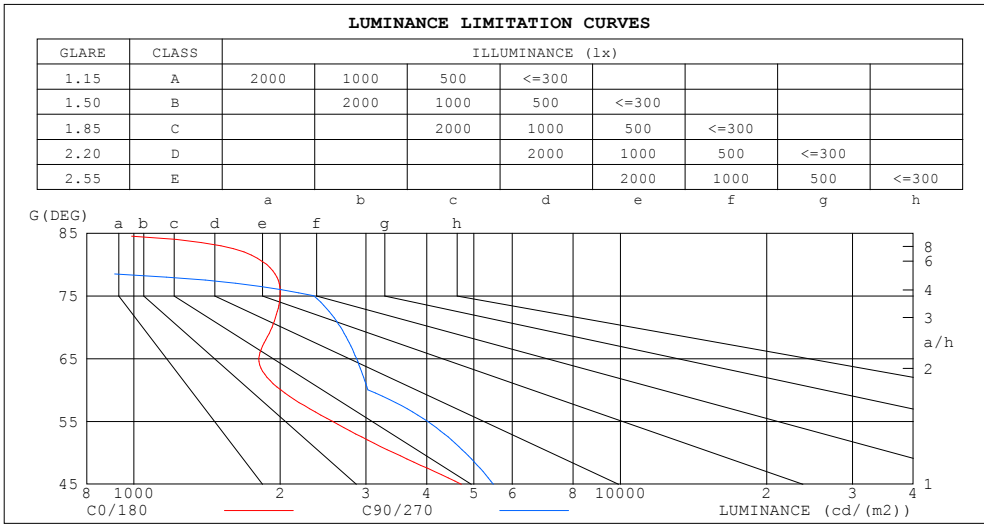
%lamp = 89.2%

H(□) Range:-90 - 90DEG
H(□) Interval: 1.0DEG
Test Speed: HIGH
Temperature:25.3DEG
Operators:
Test Date:21 October 2021

V(B) Range:-75 - 75DEG
V(B) Interval: 5.0DEG
Test System:EVERFINE GO-2000B_V1 SYSTEM V2.0.366
Humidity:65.0%
Test Distance:7.500m [K=1.0867]
Remarks:

LUMINANCE LIMITATION CURVES

Test:U:218.92V I:0.1528A P:32.106W PF:0.9599 Freq:49.99Hz Lamp Flux:4778.47x1 lm		
NAME: GLM-BPL6060A-32W-C	TYPE:LED	WEIGHT:
SPEC.:	DIM.:	SERIAL No.:1
MFR.: EVERFINE	SUR.:	Shielding Angle:



LUMINANCE cd/(m2)		
G (DEG)	C0/180	C90/270
85	711	0
80	1875	0
75	1999	2345
70	1925	2661
65	1806	2869
60	2004	3029
55	2559	4015
50	3418	4802
45	4716	5484

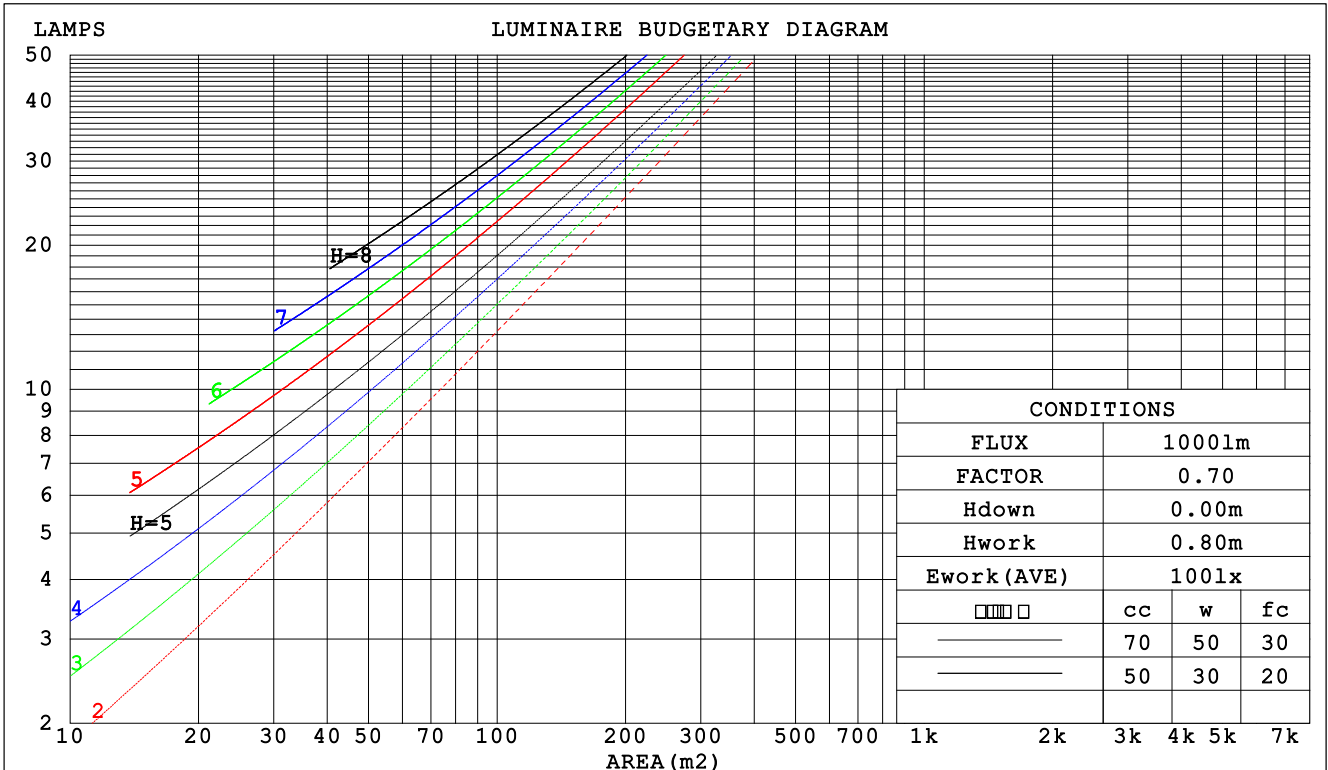
H(□) Range:-90 - 90DEG
H(□) Interval: 1.0DEG
Test Speed: HIGH
Temperature:25.3DEG
Operators:
Test Date:21 October 2021

V(B) Range:-75 - 75DEG
V(B) Interval: 5.0DEG
Test System:EVERFINE GO-2000B_V1 SYSTEM V2.0.366
Humidity:65.0%
Test Distance:7.500m [K=1.0867]
Remarks:

CU AND LUMINAIRE BUDGETARY ESTIMATE DIAGRAM

Test:U:218.92V I:0.1528A P:32.106W PF:0.9599 Freq:49.99Hz Lamp Flux:4778.47x1 lm		
NAME: GLM-BPL6060A-32W-C	TYPE:LED	WEIGHT:
SPEC.:	DIM.:	SERIAL No.:1
MFR.: EVERFINE	SUR.:	Shielding Angle:

□cc	80%			70%			50%			30%			10%			0
□w	50%	30%	10%	50%	30%	10%	50%	30%	10%	50%	30%	10%	50%	30%	10%	0
□fc	20%			20%			20%			20%			20%			0
RCR	RCR:Room Cavity Ratio						Coefficients of Utilization(CU)									
0.0	1.19	1.19	1.19	1.16	1.16	1.16	1.11	1.11	1.11	1.06	1.06	1.06	1.02	1.02	1.02	.00
1.0	1.07	1.03	1.00	1.05	1.01	.98	1.00	.98	.95	.97	.94	.93	.93	.91	.90	.88
2.0	.95	.90	.85	.93	.88	.84	.90	.86	.82	.87	.83	.80	.84	.81	.78	.76
3.0	.85	.78	.73	.84	.77	.72	.81	.75	.71	.78	.74	.70	.76	.72	.69	.67
4.0	.77	.69	.63	.76	.68	.63	.73	.67	.62	.71	.66	.61	.69	.64	.61	.59
5.0	.70	.62	.56	.69	.61	.56	.67	.60	.55	.65	.59	.54	.63	.58	.54	.52
6.0	.63	.55	.50	.63	.55	.49	.61	.54	.49	.59	.53	.49	.58	.52	.48	.46
7.0	.58	.50	.45	.57	.50	.44	.56	.49	.44	.54	.48	.44	.53	.48	.44	.42
8.0	.53	.46	.40	.53	.45	.40	.51	.45	.40	.50	.44	.40	.49	.44	.39	.38
9.0	.49	.42	.37	.49	.41	.36	.48	.41	.36	.47	.41	.36	.46	.40	.36	.34
10.0	.46	.38	.33	.45	.38	.33	.44	.38	.33	.43	.37	.33	.43	.37	.33	.31



H(□) Range:-90 - 90DEG
H(□) Interval: 1.0DEG
Test Speed: HIGH
Temperature:25.3DEG
Operators:
Test Date:21 October 2021

V(B) Range:-75 - 75DEG
V(B) Interval: 5.0DEG
Test System:EVERFINE GO-2000B_V1 SYSTEM V2.0.366
Humidity:65.0%
Test Distance:7.500m [K=1.0867]
Remarks:

WEC AND CCEC

Test:U:218.92V I:0.1528A P:32.106W PF:0.9599 Freq:49.99Hz Lamp Flux:4778.47x1 lm		
NAME: GLM-BPL6060A-32W-C	TYPE:LED	WEIGHT:
SPEC.:	DIM.:	SERIAL No.:1
MFR.: EVERFINE	SUR.:	Shielding Angle:

<input type="checkbox"/> cc	80%	70%	50%	30%	10%	0
<input type="checkbox"/> w	50% 30% 10%	50% 30% 10%	50% 30% 10%	50% 30% 10%	50% 30% 10%	0
<input type="checkbox"/> fc	20%	20%	20%	20%	20%	0
RCR	RCR:Room Cavity Ratio		Wall Exitance Coefficients (WEC)			
0.0						
1.0	.254 .144 .046	.247 .141 .045	.234 .134 .043	.222 .128 .041	.211 .122 .039	
2.0	.245 .134 .041	.239 .132 .041	.228 .127 .039	.217 .122 .038	.208 .117 .037	
3.0	.231 .123 .037	.226 .121 .036	.216 .117 .036	.207 .113 .035	.198 .110 .034	
4.0	.217 .113 .033	.212 .111 .033	.204 .108 .032	.196 .105 .032	.188 .102 .031	
5.0	.204 .104 .030	.199 .102 .030	.192 .100 .029	.185 .097 .029	.178 .095 .029	
6.0	.191 .096 .027	.187 .095 .027	.181 .093 .027	.174 .091 .027	.168 .089 .026	
7.0	.180 .089 .025	.177 .088 .025	.170 .086 .025	.165 .084 .025	.159 .083 .024	
8.0	.169 .083 .023	.167 .082 .023	.161 .080 .023	.156 .079 .023	.151 .078 .023	
9.0	.160 .077 .022	.158 .077 .022	.153 .075 .021	.148 .074 .021	.144 .073 .021	
10.0	.152 .073 .020	.149 .072 .020	.145 .071 .020	.141 .070 .020	.137 .069 .020	

<input type="checkbox"/> cc	80%	70%	50%	30%	10%	0
<input type="checkbox"/> w	50% 30% 10%	50% 30% 10%	50% 30% 10%	50% 30% 10%	50% 30% 10%	0
<input type="checkbox"/> fc	20%	20%	20%	20%	20%	0
RCR	RCR:Room Cavity Ratio		Ceiling Cavity Exitance Coefficients (CCEC)			
0.0	.190 .190 .190	.163 .163 .163	.111 .111 .111	.064 .064 .064	.020 .020 .020	
1.0	.176 .157 .139	.151 .134 .119	.103 .092 .083	.059 .054 .048	.019 .017 .016	
2.0	.166 .132 .104	.142 .114 .090	.097 .079 .063	.056 .046 .037	.018 .015 .012	
3.0	.157 .114 .080	.135 .098 .069	.092 .068 .049	.053 .040 .029	.017 .013 .009	
4.0	.149 .100 .063	.128 .087 .055	.088 .060 .039	.051 .035 .023	.016 .012 .008	
5.0	.141 .090 .051	.122 .077 .045	.084 .054 .031	.048 .032 .019	.016 .010 .006	
6.0	.135 .081 .042	.116 .070 .037	.080 .049 .026	.046 .029 .016	.015 .009 .005	
7.0	.128 .074 .036	.110 .064 .031	.076 .045 .022	.044 .026 .013	.014 .009 .004	
8.0	.122 .068 .031	.105 .059 .027	.073 .041 .019	.042 .024 .011	.014 .008 .004	
9.0	.117 .063 .027	.101 .055 .023	.070 .038 .017	.041 .023 .010	.013 .007 .003	
10.0	.112 .059 .024	.096 .051 .021	.067 .036 .015	.039 .021 .009	.013 .007 .003	

H(□) Range:-90 - 90DEG
H(□) Interval: 1.0DEG
Test Speed: HIGH
Temperature:25.3DEG
Operators:
Test Date:21 October 2021

V(B) Range:-75 - 75DEG
V(B) Interval: 5.0DEG
Test System:EVERFINE GO-2000B_V1 SYSTEM V2.0.366
Humidity:65.0%
Test Distance:7.500m [K=1.0867]
Remarks:

UGR(Unified Glare Rating) Table

Test:U:218.92V I:0.1528A P:32.106W PF:0.9599 Freq:49.99Hz Lamp Flux:4778.47x1 lm		
NAME: GLM-BPL6060A-32W-C	TYPE:LED	WEIGHT:
SPEC.:	DIM.:	SERIAL No.:1
MFR.: EVERFINE	SUR.:	Shielding Angle:

ceiling/cavity	0.7	0.7	0.5	0.5	0.3	0.7	0.7	0.5	0.5	0.3
walls	0.5	0.3	0.5	0.3	0.3	0.5	0.3	0.5	0.3	0.3
working plane	0.2	0.2	0.2	0.2	0.2	0.2	0.2	0.2	0.2	0.2
Room dimensions	Viewed crosswise					Viewed endwise				
x = 2H y = 2H	16.2	17.6	16.5	17.8	18.0	16.4	17.7	16.7	17.9	18.1
3H	17.0	18.2	17.3	18.4	18.7	17.3	18.5	17.6	18.7	18.9
4H	17.4	18.6	17.7	18.8	19.0	17.7	18.9	18.0	19.1	19.4
6H	17.7	18.8	18.0	19.0	19.3	17.8	18.9	18.1	19.1	19.4
8H	17.7	18.7	18.0	19.0	19.3	17.7	18.8	18.0	19.0	19.3
12H	17.7	18.7	18.0	19.0	19.3	17.7	18.7	18.0	19.0	19.3
4H 2H	16.6	17.8	16.9	18.0	18.2	16.7	17.8	17.0	18.1	18.3
3H	17.7	18.7	18.0	18.9	19.2	17.7	18.7	18.0	19.0	19.3
4H	18.2	19.1	18.6	19.4	19.8	18.2	19.2	18.6	19.5	19.8
6H	18.6	19.4	19.0	19.7	20.1	18.3	19.1	18.7	19.5	19.8
8H	18.6	19.4	19.0	19.8	20.1	18.3	19.0	18.7	19.4	19.8
12H	18.6	19.3	19.0	19.7	20.1	18.2	18.9	18.7	19.3	19.7
8H 4H	18.4	19.2	18.8	19.5	19.9	18.5	19.2	18.9	19.6	19.9
6H	18.9	19.6	19.4	20.0	20.4	18.6	19.2	19.0	19.6	20.0
8H	19.1	19.6	19.5	20.0	20.5	18.5	19.1	19.0	19.5	20.0
12H	19.1	19.5	19.5	20.0	20.5	18.5	19.0	19.0	19.4	19.9
12H 4H	18.4	19.1	18.8	19.4	19.8	18.5	19.1	18.9	19.5	19.9
6H	18.9	19.5	19.4	19.9	20.3	18.6	19.1	19.1	19.6	20.0
8H	19.1	19.5	19.5	20.0	20.4	18.6	19.0	19.0	19.5	19.9
Variations with the observer position at spacings:										
S = 1.0H	+ 0.5 / - 0.6					+ 0.4 / - 0.5				
1.5H	+ 0.3 / - 0.9					+ 0.4 / - 0.8				
2.0H	+ 0.9 / - 1.5					+ 1.4 / - 1.7				

CIE Pub.117, 4778 lm Total Lamp Luminous Flux Corrected (8log(F/F0) = 5.4)

H(□) Range:-90 - 90DEG	V(B) Range:-75 - 75DEG
H(□) Interval: 1.0DEG	V(B) Interval: 5.0DEG
Test Speed: HIGH	Test System:EVERFINE GO-2000B_V1 SYSTEM V2.0.366
Temperature:25.3DEG	Humidity:65.0%
Operators:	Test Distance:7.500m [K=1.0867]
Test Date:21 October 2021	Remarks:

UTILIZATION FACTORS TABLE

Test:U:218.92V I:0.1528A P:32.106W PF:0.9599 Freq:49.99Hz Lamp Flux:4778.47x1 lm		
NAME: GLM-BPL6060A-32W-C	TYPE:LED	WEIGHT:
SPEC.:	DIM.:	SERIAL No.:1
MFR.: EVERFINE	SUR.:	Shielding Angle:

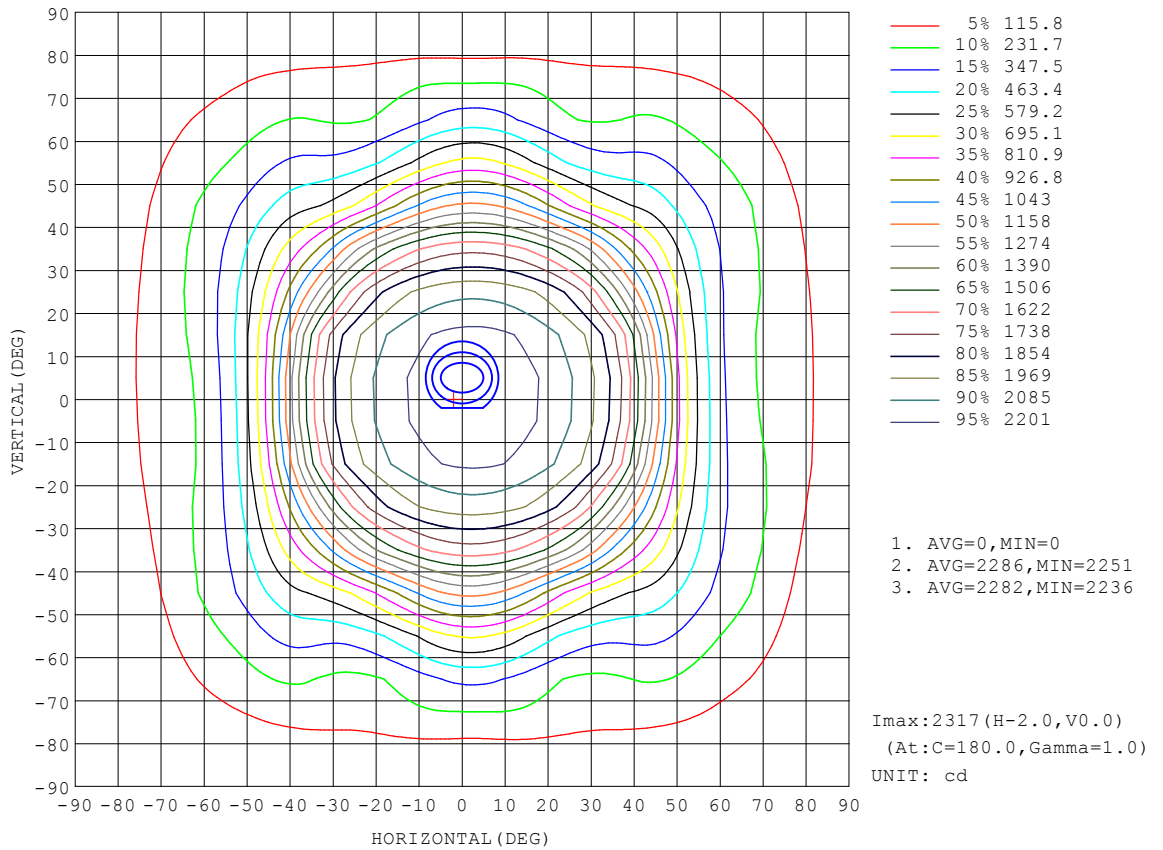
REFLECTANCE										
Ceiling	0.8	0.8	0.8	0.7	0.7	0.7	0.5	0.5	0.5	0
Walls	0.7	0.5	0.3	0.7	0.5	0.3	0.7	0.5	0.3	0
Working plane	0.2	0.2	0.2	0.2	0.2	0.2	0.2	0.2	0.2	0
ROOM INDEX	UTILIZATION FACTORS (PERCENT) $k(RI) \times RCR = 5$									
k = 0.60	66	56	50	66	56	50	65	56	50	45
0.80	76	66	60	75	66	60	74	65	60	54
1.00	84	75	69	83	74	68	81	75	68	62
1.25	90	82	76	89	81	76	87	80	75	69
1.50	95	87	81	93	86	81	90	84	79	73
2.00	100	93	88	99	92	87	95	90	86	79
2.50	103	97	92	101	96	91	98	93	89	82
3.00	106	101	96	104	99	95	100	96	93	85
4.00	109	105	101	107	103	100	103	100	97	89
5.00	111	107	104	109	105	102	104	102	99	91
ROOM INDEX	UF(total)									Direct
According to DIN EN 13032-2 2004			Suspended				SHRNOM = 1.25			

H(□) Range:-90 - 90DEG
H(□) Interval: 1.0DEG
Test Speed: HIGH
Temperature:25.3DEG
Operators:
Test Date:21 October 2021

V(B) Range:-75 - 75DEG
V(B) Interval: 5.0DEG
Test System:EVERFINE GO-2000B_V1 SYSTEM V2.0.366
Humidity:65.0%
Test Distance:7.500m [K=1.0867]
Remarks:

ISOCANDELA DIAGRAM

Test:U:218.92V I:0.1528A P:32.106W PF:0.9599 Freq:49.99Hz Lamp Flux:4778.47x1 lm		
NAME: GLM-BPL6060A-32W-C	TYPE:LED	WEIGHT:
SPEC.:	DIM.:	SERIAL No.:1
MFR.: EVERFINE	SUR.:	Shielding Angle:

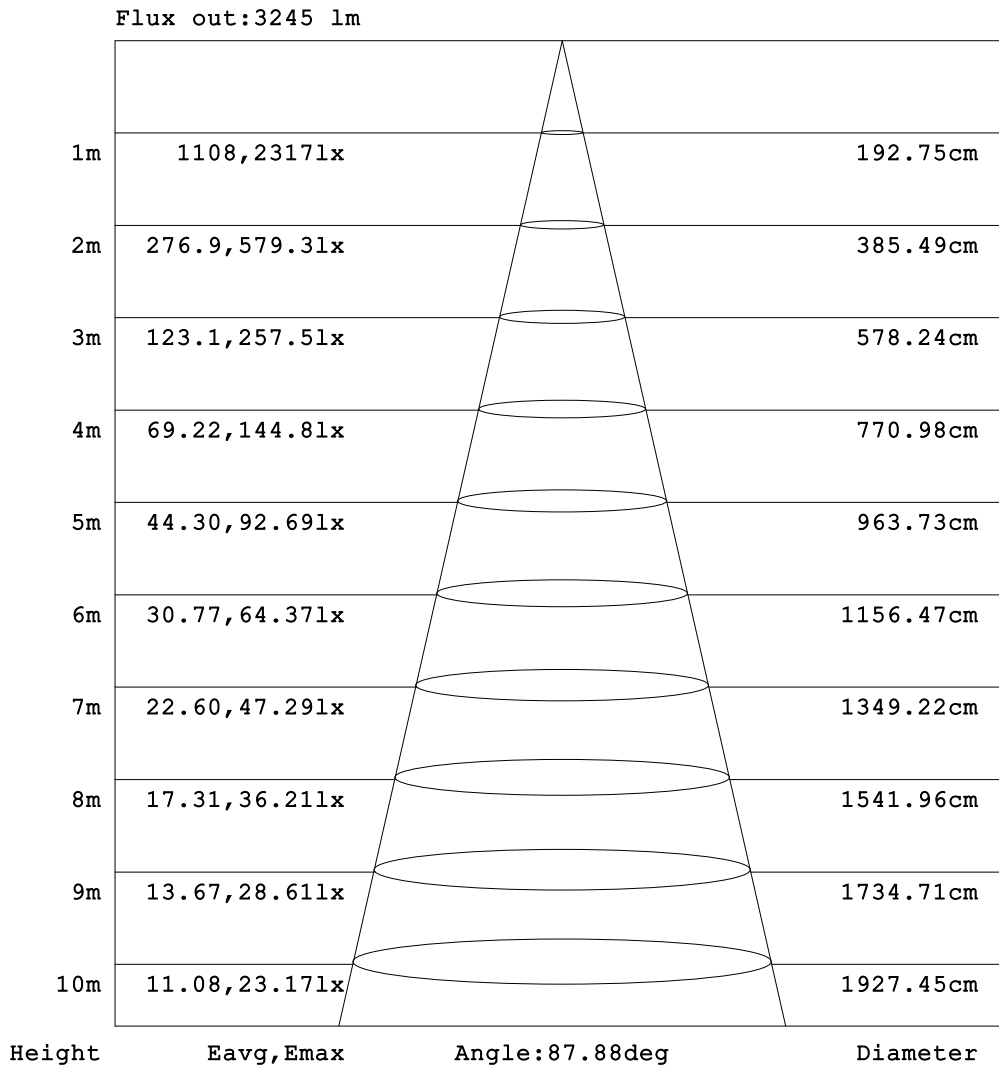


H(□) Range:-90 - 90DEG
 H(□) Interval: 1.0DEG
 Test Speed: HIGH
 Temperature:25.3DEG
 Operators:
 Test Date:21 October 2021

V(B) Range:-75 - 75DEG
 V(B) Interval: 5.0DEG
 Test System:EVERFINE GO-2000B_V1 SYSTEM V2.0.366
 Humidity:65.0%
 Test Distance:7.500m [K=1.0867]
 Remarks:

AAI Figure

Test:U:218.92V I:0.1528A P:32.106W PF:0.9599 Freq:49.99Hz Lamp Flux:4778.47x1 lm		
NAME: GLM-BPL6060A-32W-C	TYPE:LED	WEIGHT:
SPEC.:	DIM.:	SERIAL No.:1
MFR.: EVERFINE	SUR.:	Shielding Angle:



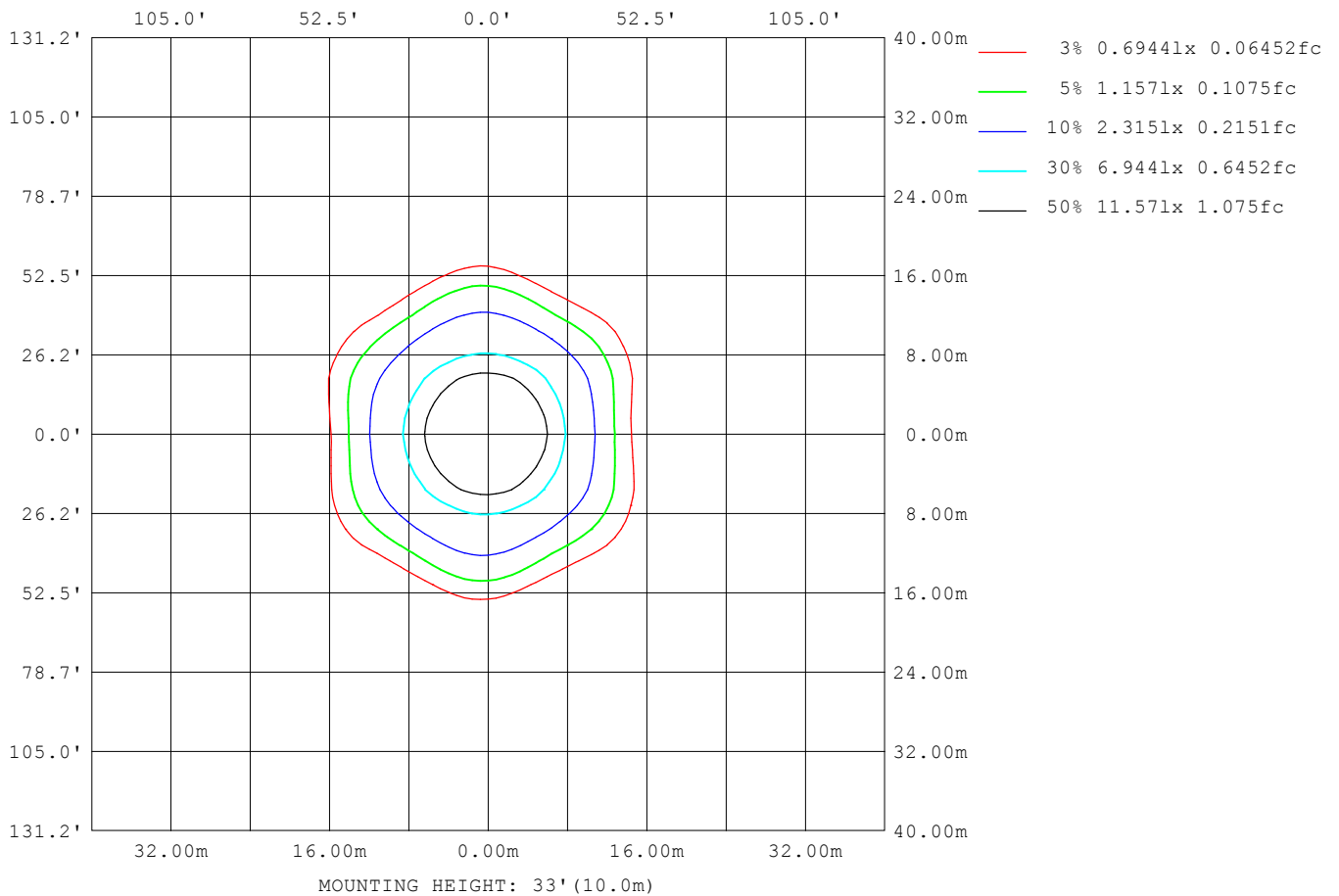
Note:The Curves indicate the illuminated area and the average illumination when the luminaire is at different distance.

H(□) Range:-90 - 90DEG
H(□) Interval: 1.0DEG
Test Speed: HIGH
Temperature:25.3DEG
Operators:
Test Date:21 October 2021

V(B) Range:-75 - 75DEG
V(B) Interval: 5.0DEG
Test System:EVERFINE GO-2000B_V1 SYSTEM V2.0.366
Humidity:65.0%
Test Distance:7.500m [K=1.0867]
Remarks:

ISOLUX DIAGRAM

Test:U:218.92V I:0.1528A P:32.106W PF:0.9599 Freq:49.99Hz Lamp Flux:4778.47x1 lm		
NAME: GLM-BPL6060A-32W-C	TYPE:LED	WEIGHT:
SPEC.:	DIM.:	SERIAL No.:1
MFR.: EVERFINE	SUR.:	Shielding Angle:



H(□) Range:-90 - 90DEG
H(□) Interval: 1.0DEG
Test Speed: HIGH
Temperature:25.3DEG
Operators:
Test Date:21 October 2021

V(B) Range:-75 - 75DEG
V(B) Interval: 5.0DEG
Test System:EVERFINE GO-2000B_V1 SYSTEM V2.0.366
Humidity:65.0%
Test Distance:7.500m [K=1.0867]
Remarks:

LED Avg.L Report

Test:U:218.92V I:0.1528A P:32.106W PF:0.9599 Freq:49.99Hz Lamp Flux:4778.47x1 lm		
NAME: GLM-BPL6060A-32W-C	TYPE:LED	WEIGHT:
SPEC.:	DIM.:	SERIAL No.:1
MFR.: EVERFINE	SUR.:	Shielding Angle:

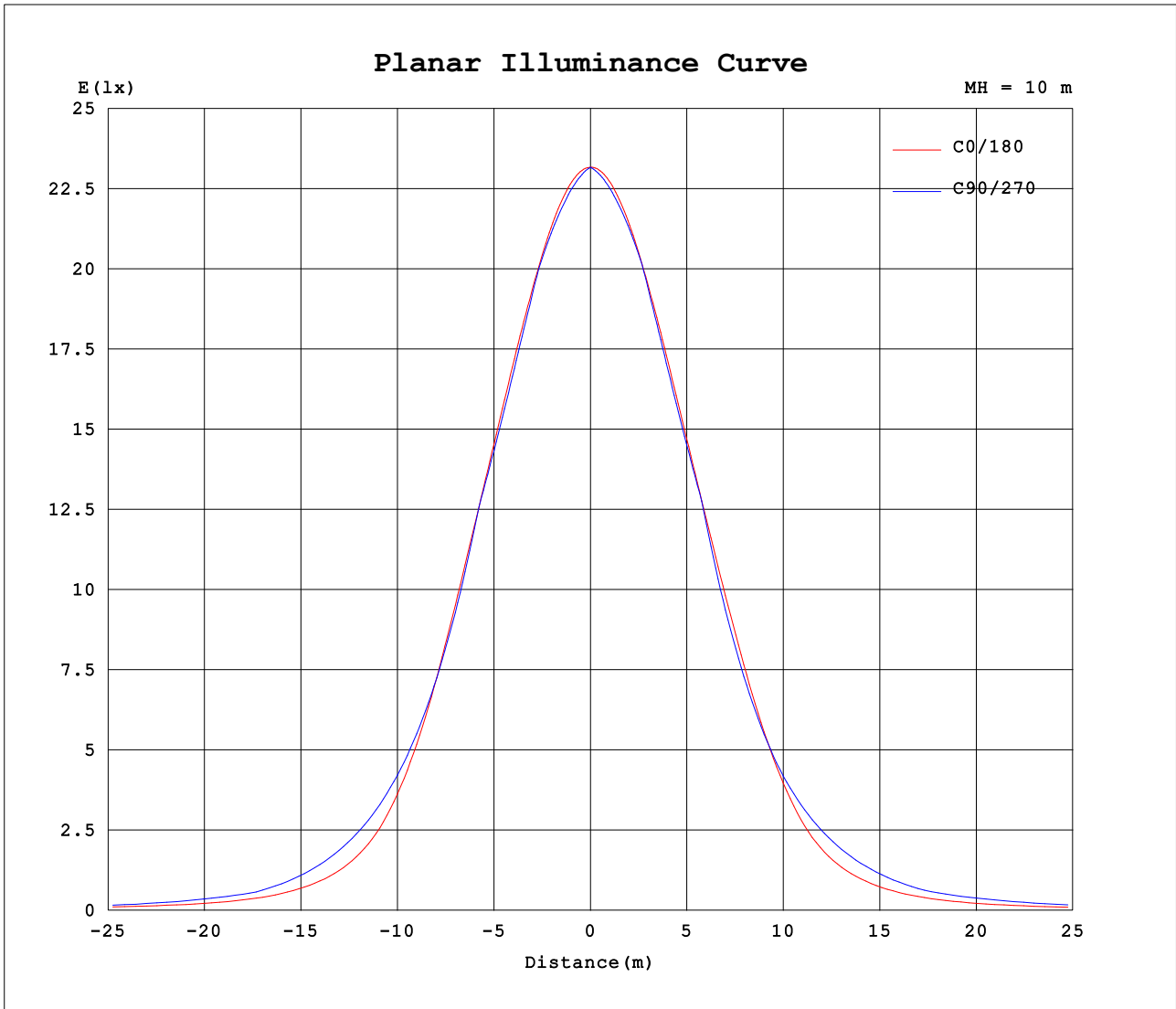
AvgL	cd/m2
L_0~180 (65) av	1790
L_0~180 (75) av	1979
L_0~180 (85) av	846
L_90~270 (65) av	2982
L_90~270 (75) av	2433
L_90~270 (85) av	0
L_45 (65) av	2691
L_45 (75) av	2429
L_45 (85) av	0

Standard: GB/T 29293-2012

H(□) Range:-90 - 90DEG
H(□) Interval: 1.0DEG
Test Speed: HIGH
Temperature:25.3DEG
Operators:
Test Date:21 October 2021

V(B) Range:-75 - 75DEG
V(B) Interval: 5.0DEG
Test System:EVERFINE GO-2000B_V1 SYSTEM V2.0.366
Humidity:65.0%
Test Distance:7.500m [K=1.0867]
Remarks:

Planar Illuminance Curve



H(□) Range:-90 - 90DEG
H(□) Interval: 1.0DEG
Test Speed: HIGH
Temperature:25.3DEG
Operators:
Test Date:21 October 2021

V(B) Range:-75 - 75DEG
V(B) Interval: 5.0DEG
Test System:EVERFINE GO-2000B_V1 SYSTEM V2.0.366
Humidity:65.0%
Test Distance:7.500m [K=1.0867]
Remarks:

LUMINOUS DISTRIBUTION INTENSITY DATA

Test:U:218.92V I:0.1528A P:32.106W PF:0.9599 Freq:49.99Hz Lamp Flux:4778.47x1 lm		
NAME: GLM-BPL6060A-32W-C	TYPE:LED	WEIGHT:
SPEC.:	DIM.:	SERIAL No.:1
MFR.: EVERFINE	SUR.:	Shielding Angle:

Table--1

UNIT: cd

C (DEG) □ (DEG)	0	5	10	15	20	25	30	35	40	45	50	55	60	65	70	75	80	85	90
0	2317	2317	2317	2317	2317	2317	2317	2317	2317	2317	2317	2317	2317	2317	2317	2317	2317	2317	2317
5	2306	2303	2301	2299	2297	2295	2294	2292	2291	2290	2289	2288	2287	2286	2286	2285	2285	2285	2285
10	2275	2271	2268	2265	2263	2261	2259	2257	2254	2253	2252	2251	2251	2251	2251	2251	2251	2252	2252
15	2226	2221	2218	2216	2213	2208	2204	2202	2201	2203	2207	2210	2213	2215	2217	2219	2220	2220	2220
20	2159	2154	2151	2148	2140	2134	2133	2140	2147	2155	2152	2143	2136	2131	2128	2127	2126	2125	2126
25	2067	2063	2062	2051	2041	2045	2058	2072	2050	2035	2025	2024	2026	2029	2031	2032	2033	2033	2032
30	1937	1935	1932	1912	1915	1940	1932	1899	1883	1890	1899	1907	1910	1916	1922	1928	1933	1936	1938
35	1732	1739	1720	1697	1746	1738	1687	1685	1704	1712	1723	1740	1724	1709	1699	1694	1692	1691	1690
40	1412	1436	1393	1415	1459	1401	1412	1426	1421	1438	1440	1430	1410	1397	1398	1407	1421	1433	1441
45	1027	1080	1016	1102	1077	1104	1118	1092	1109	1122	1097	1069	1058	1070	1098	1133	1164	1185	1194
50	677	724	720	773	799	848	844	860	837	798	777	755	758	784	821	864	904	934	951
55	452	483	518	528	603	626	666	646	622	583	560	543	542	557	588	630	671	700	709
60	309	330	368	409	436	481	490	504	486	455	417	385	363	354	359	382	418	450	466
65	235	253	277	313	342	360	381	380	380	350	300	247	231	238	263	300	340	366	374
70	203	222	242	256	267	265	275	279	276	265	235	207	194	199	217	241	264	277	280
75	159	168	178	189	185	184	181	194	197	192	180	166	158	164	180	194	199	192	187
80	100	96.3	93.9	100	104	108	108	114	118	102	81.6	60.5	43.1	31.1	21.7	13.1	5.92	1.43	0.00
85	19.1	12.1	14.2	13.5	24.4	18.4	0.00	0.00	0.00	0.00	0.00	0.00	0.00	0.00	0.00	0.00	0.00	0.00	0.00
90	0.00	0.00	0.00	0.00	0.00	0.00	0.00	0.00	0.00	0.00	0.00	0.00	0.00	0.00	0.00	0.00	0.00	0.00	0.00

H(□) Range:-90 - 90DEG
H(□) Interval: 1.0DEG
Test Speed: HIGH
Temperature:25.3DEG
Operators:
Test Date:21 October 2021

V(B) Range:-75 - 75DEG
V(B) Interval: 5.0DEG
Test System:EVERFINE GO-2000B_V1 SYSTEM V2.0.366
Humidity:65.0%
Test Distance:7.500m [K=1.0867]
Remarks:

LUMINOUS DISTRIBUTION INTENSITY DATA

Test:U:218.92V I:0.1528A P:32.106W PF:0.9599 Freq:49.99Hz Lamp Flux:4778.47x1 lm		
NAME: GLM-BPL6060A-32W-C	TYPE:LED	WEIGHT:
SPEC.:	DIM.:	SERIAL No.:1
MFR.: EVERFINE	SUR.:	Shielding Angle:

Table--2

UNIT: cd

C (DEG) □ (DEG)	95	100	105	110	115	120	125	130	135	140	145	150	155	160	165	170	175	180	185
0	2317	2317	2317	2317	2317	2317	2317	2317	2317	2317	2317	2317	2317	2317	2317	2317	2317	2317	2317
5	2285	2285	2285	2285	2285	2286	2287	2288	2289	2290	2292	2294	2296	2298	2300	2303	2306	2309	2307
10	2252	2253	2253	2253	2253	2252	2252	2252	2252	2252	2252	2253	2256	2259	2264	2269	2275	2282	2276
15	2219	2218	2217	2215	2213	2211	2210	2209	2209	2209	2207	2205	2204	2203	2208	2216	2226	2236	2227
20	2127	2128	2130	2131	2134	2137	2141	2146	2148	2145	2144	2145	2142	2138	2136	2144	2157	2173	2159
25	2031	2030	2029	2028	2029	2030	2034	2040	2043	2050	2060	2057	2058	2056	2048	2046	2064	2087	2066
30	1939	1937	1934	1928	1920	1910	1898	1894	1899	1911	1919	1930	1936	1938	1931	1916	1933	1967	1936
35	1690	1691	1693	1700	1716	1742	1772	1745	1716	1698	1712	1736	1744	1749	1758	1726	1729	1787	1736
40	1444	1440	1431	1420	1413	1414	1429	1462	1498	1472	1428	1440	1476	1456	1455	1443	1412	1501	1421
45	1188	1169	1140	1113	1097	1100	1113	1121	1122	1147	1164	1122	1123	1130	1071	1100	1020	1123	1029
50	949	929	892	847	804	772	770	809	848	855	857	876	829	808	760	738	686	738	698
55	698	669	632	598	577	568	568	575	593	645	669	639	631	562	546	483	465	484	478
60	460	431	394	366	355	360	385	426	470	500	501	503	454	432	369	335	321	322	338
65	363	334	296	260	235	224	235	295	357	386	394	378	358	315	291	257	235	231	254
70	278	267	245	218	197	190	206	239	270	288	284	273	273	255	223	203	190	191	203
75	191	196	189	174	160	156	164	182	197	199	190	189	185	181	164	149	148	156	162
80	1.43	5.81	12.7	20.7	29.9	42.8	61.1	81.8	101	114	113	113	107	99.7	80.9	67.7	67.5	102	96.4
85	0.00	0.00	0.00	0.00	0.00	0.00	0.00	0.00	0.00	0.00	0.00	0.00	16.8	19.5	14.7	8.30	0.45	26.3	14.3
90	0.00	0.00	0.00	0.00	0.00	0.00	0.00	0.00	0.00	0.00	0.00	0.00	0.00	0.00	0.00	0.00	0.00	0.00	0.00

H(□) Range:-90 - 90DEG
 H(□) Interval: 1.0DEG
 Test Speed: HIGH
 Temperature:25.3DEG
 Operators:
 Test Date:21 October 2021

V(B) Range:-75 - 75DEG
 V(B) Interval: 5.0DEG
 Test System:EVERFINE GO-2000B_V1 SYSTEM V2.0.366
 Humidity:65.0%
 Test Distance:7.500m [K=1.0867]
 Remarks:

LUMINOUS DISTRIBUTION INTENSITY DATA

Test:U:218.92V I:0.1528A P:32.106W PF:0.9599 Freq:49.99Hz Lamp Flux:4778.47x1 lm		
NAME: GLM-BPL6060A-32W-C	TYPE:LED	WEIGHT:
SPEC.:	DIM.:	SERIAL No.:1
MFR.: EVERFINE	SUR.:	Shielding Angle:

Table--3

UNIT: cd

C (DEG) □ (DEG)	190	195	200	205	210	215	220	225	230	235	240	245	250	255	260	265	270	275	280
0	2317	2317	2317	2317	2317	2317	2317	2317	2317	2317	2317	2317	2317	2317	2317	2317	2317	2317	2317
5	2304	2302	2300	2298	2296	2295	2294	2292	2292	2291	2290	2290	2290	2290	2290	2290	2290	2290	2290
10	2271	2267	2263	2260	2258	2258	2258	2259	2260	2261	2262	2262	2263	2263	2263	2263	2263	2262	2262
15	2219	2213	2209	2210	2213	2216	2219	2220	2221	2223	2225	2227	2230	2232	2233	2235	2236	2236	2235
20	2147	2141	2145	2151	2156	2156	2159	2163	2162	2158	2154	2152	2150	2149	2147	2146	2146	2145	2145
25	2050	2055	2065	2069	2070	2074	2066	2061	2059	2054	2051	2050	2051	2052	2053	2054	2055	2056	2056
30	1922	1940	1949	1950	1946	1936	1930	1919	1917	1922	1935	1946	1954	1960	1964	1966	1965	1964	1961
35	1738	1774	1768	1762	1753	1730	1719	1739	1770	1799	1768	1740	1722	1712	1707	1705	1705	1708	1712
40	1459	1478	1480	1494	1450	1436	1487	1520	1482	1447	1433	1430	1433	1439	1444	1446	1445	1441	1436
45	1114	1091	1150	1138	1126	1160	1143	1122	1126	1120	1109	1107	1120	1140	1163	1178	1185	1183	1171
50	761	788	835	849	881	850	840	834	798	760	769	812	857	900	933	954	958	947	922
55	509	577	596	659	647	659	624	570	560	563	573	589	616	650	687	716	731	724	698
60	364	400	465	469	497	481	478	453	419	388	373	373	390	423	462	493	504	487	452
65	285	320	331	356	361	373	364	341	294	249	243	255	281	319	360	389	403	395	367
70	221	240	261	267	260	264	265	256	236	213	205	213	234	262	286	299	302	297	283
75	173	184	191	186	182	182	190	191	182	171	167	173	186	200	208	205	201	204	209
80	103	108	115	114	116	118	120	104	83.3	63.0	45.5	32.4	22.1	13.3	6.18	1.53	0.00	1.52	6.22
85	24.6	25.0	26.2	19.1	0.00	0.00	0.00	0.00	0.00	0.00	0.00	0.00	0.00	0.00	0.00	0.00	0.00	0.00	0.00
90	0.00	0.00	0.00	0.00	0.00	0.00	0.00	0.00	0.00	0.00	0.00	0.00	0.00	0.00	0.00	0.00	0.00	0.00	0.00

H(□) Range:-90 - 90DEG
H(□) Interval: 1.0DEG
Test Speed: HIGH
Temperature:25.3DEG
Operators:
Test Date:21 October 2021

V(B) Range:-75 - 75DEG
V(B) Interval: 5.0DEG
Test System:EVERFINE GO-2000B_V1 SYSTEM V2.0.366
Humidity:65.0%
Test Distance:7.500m [K=1.0867]
Remarks:

LUMINOUS DISTRIBUTION INTENSITY DATA

Test:U:218.92V I:0.1528A P:32.106W PF:0.9599 Freq:49.99Hz Lamp Flux:4778.47x1 lm		
NAME: GLM-BPL6060A-32W-C	TYPE:LED	WEIGHT:
SPEC.:	DIM.:	SERIAL No.:1
MFR.: EVERFINE	SUR.:	Shielding Angle:

Table--4

UNIT: cd

C (DEG) □ (DEG)	285	290	295	300	305	310	315	320	325	330	335	340	345	350	355				
0	2317	2317	2317	2317	2317	2317	2317	2317	2317	2317	2317	2317	2317	2317	2317				
5	2291	2291	2292	2292	2293	2293	2294	2295	2295	2296	2297	2299	2300	2302	2304				
10	2261	2261	2260	2260	2260	2260	2260	2261	2262	2264	2265	2266	2268	2269	2272				
15	2234	2232	2229	2226	2222	2218	2214	2211	2211	2212	2215	2219	2220	2221	2223				
20	2146	2147	2150	2154	2160	2168	2170	2161	2152	2144	2144	2147	2154	2155	2156				
25	2056	2054	2052	2050	2048	2048	2056	2070	2089	2073	2058	2052	2059	2068	2066				
30	1957	1952	1946	1941	1938	1930	1921	1914	1927	1956	1960	1933	1927	1942	1940				
35	1718	1728	1743	1764	1785	1769	1758	1749	1728	1725	1771	1777	1724	1739	1748				
40	1429	1426	1431	1448	1473	1491	1499	1479	1476	1456	1441	1500	1448	1412	1447				
45	1150	1125	1103	1093	1106	1139	1170	1154	1129	1149	1129	1093	1116	1017	1081				
50	888	850	814	786	779	802	824	860	879	853	850	794	764	711	719				
55	659	618	584	563	561	574	594	630	646	660	614	590	511	501	473				
60	414	387	377	382	400	428	461	484	492	470	465	419	390	346	318				
65	326	285	256	245	258	307	353	374	364	363	348	331	295	258	240				
70	258	232	213	207	218	242	265	270	272	272	267	265	247	227	209				
75	203	187	173	169	176	187	195	197	196	193	197	194	195	178	166				
80	13.6	22.5	32.8	46.5	64.8	86.4	108	125	123	120	120	121	120	118	111				
85	0.00	0.00	0.00	0.00	0.00	0.00	0.00	0.00	0.00	0.00	21.6	33.1	24.8	30.6	33.8				
90	0.00	0.00	0.00	0.00	0.00	0.00	0.00	0.00	0.00	0.00	0.00	0.00	0.00	0.00	0.00				

H(□) Range:-90 - 90DEG
 H(□) Interval: 1.0DEG
 Test Speed: HIGH
 Temperature:25.3DEG
 Operators:
 Test Date:21 October 2021
 V(B) Range:-75 - 75DEG
 V(B) Interval: 5.0DEG
 Test System:EVERFINE GO-2000B_V1 SYSTEM V2.0.366
 Humidity:65.0%
 Test Distance:7.500m [K=1.0867]
 Remarks: